



ROAD CRASHES in South Australia

Statistical Summary of Road Crashes & Casualties in 2018



Prepared by Department of Planning, Transport and Infrastructure

Only available in electronic format from the Department of Planning, Transport and Infrastructure's Road Safety website:
<http://dpti.sa.gov.au/towardszerotogether>

Further Information

For further information concerning road crash statistics for South Australia, write to the

Department of Planning, Transport and Infrastructure
GPO Box 1533,
ADELAIDE SA 5000
Email: DPTI.enquiriesadministrator@sa.gov.au

Full Title: Road Crashes in South Australia: Statistical Summary of Road Crashes & Casualties in 2018

Type of Report and Period Covered: Statistical, 2018

Pages: 63

Key Words: crash, crash rate, casualty, serious injury, injuries, age, blood alcohol concentration, day, hour, fatality, month, road user, severity, sex, vehicle movement, year, statistical

The data presented in this report is for information purposes only and should be used with care before drawing conclusions not contained in this report. Numbers may not match with future publications due to the database continually being updated with new information.

Summary Data for 2018

	Number
CRASHES	
Fatal Crashes	75
Serious Injury Crashes	485
Minor Injury Crashes	4393
Property Damage Crashes	8646
TOTAL	13 599
CASUALTIES	
Fatalities	80
Serious Injuries	576
Minor Injuries	5468
TOTAL	6 124
OTHER DATA	
Vehicles on register¹	1 442 983
Fatalities per 10 000 vehicles	0.55
Serious Injuries per 10 000 vehicles	3.99
Casualties per 10 000 vehicles	42.44
Licence holders²	1245165
Driver/rider fatalities per 10 000 licence holders	0.56
Driver/rider serious injuries per 10 000 licence holders	3.36
Driver/rider casualties per 10 000 licence holders	33.86
Population³	1736257
Fatalities per 100 000 population	4.61
Serious Injuries per 100 000 population	33.17
Casualties per 100 000 population	352.71

¹ Excludes trailers, caravans, plant and equipment. Source: Registration and Licensing, Dept of Planning, Transport & Infrastructure, June 2018.

² No. of individual licence holders (inc learner permits). Source: Registration and Licensing, Dept of Planning, Transport & Infrastructure, June 2018.

³ Estimated resident population. Source: *Australian Demographic Statistics*, ABS, cat. no. 3101.0, June 2018.

Contents

SUMMARY DATA FOR 2018	1
KEY POINTS 2018	4
PREFACE	5
How crashes are processed?	5
Scope	5
Related Publications	5
Acknowledgements	5
Definitions & Explanatory Notes	6
CRASH AND CASUALTY TRENDS	
Table 1 Trends in South Australia, 1995 – 2018	9
Figure 1 Data Trends in South Australia, 1995 – 2018	10
Figure 2 Fatality Rates in South Australia, 1995 – 2018	10
Table 2 Comparison with other Australian States, 2018	11
Table 3 Road Crash Fatalities by Age Group compared with Deaths Registered in South Australia, 2018	11
Table 4 Casualties by Road User Type and Severity, 1995 – 2018	12
Table 5 Casualties by Age Group and Severity, 1995 – 2018	13
Table 6 Casualties by Sex and Severity, 1995 – 2018	14
Table 7 Crashes and Casualties by Region and Severity, 1995 – 2018	15
ROAD CRASHES in 2018	16
Time Distribution of Crashes	
Table 8 Crashes and Casualties during Holiday Periods by Severity	17
Table 9a Casualty Crashes by Time of Day, Day of Week	18
Figure 3 Casualty Crashes by Time of Day, Day of Week	18
Table 9b Casualties by Time of Day, Day of Week	19
Table 9c All Crashes by Time of Day, Day of Week	19
Table 10 Crashes and Casualties by Month of Year and Severity	19
Crash Type	
Table 11a Crashes and Casualties by Crash Type and Severity: <i>Metropolitan Adelaide</i>	20
Table 11b Crashes and Casualties by Crash Type and Severity: <i>Rural</i>	20
Table 11c Crashes and Casualties by Crash Type and Severity: <i>South Australia</i>	21
Table 12 Hit Fixed Object Crashes by Object First Hit and Severity	21
Table 13 Single Vehicle Crashes by Motor Vehicle Type and Severity	21
Figure 4 Definition for Coding Accidents Table	22
Table 14a Crashes and Casualties by DCA and Severity: <i>Metropolitan Adelaide</i>	23
Table 14b Crashes and Casualties by DCA and Severity: <i>Rural</i>	25
Table 14c Crashes and Casualties by DCA and Severity: <i>South Australia</i>	27
Location & Distribution of Crashes	
Table 15a Crashes and Casualties by Location Type and Severity: <i>Metropolitan Adelaide</i>	29
Table 15b Crashes and Casualties by Location Type and Severity: <i>Rural</i>	29
Table 15c Crashes and Casualties by Location Type and Severity: <i>South Australia</i>	30
Table 16a Crashes and Casualties by Traffic Control and Severity: <i>Metropolitan Adelaide</i>	30
Table 16b Crashes and Casualties by Traffic Control and Severity: <i>Rural</i>	31
Table 16c Crashes and Casualties by Traffic Control and Severity: <i>South Australia</i>	31
Table 17 Crashes and Casualties by Area Speed Limit, Region & Severity	32
Table 18 Crashes and Casualties by Light Conditions, Region & Severity	32
Table 19 Crashes and Casualties by Vertical Alignment, Region & Severity	33
Table 20 Crashes and Casualties by Horizontal Alignment, Region & Severity	33
Table 21 Crashes and Casualties by Road Moisture, Region & Severity	34
Table 22 Crashes and Casualties by Route and Severity	34
Table 23a Crashes and Casualties by Local Government Area and Severity: <i>Metropolitan Adelaide: Council Roads</i>	35
Table 23b Crashes and Casualties by Local Government Area and Severity: <i>Metropolitan Adelaide: DPTI Roads</i>	36
Table 23c Crashes and Casualties by Local Government Area and Severity: <i>Metropolitan Adelaide: All Roads</i>	37
Table 24a Crashes and Casualties by Local Government Area and Severity: <i>Rural: Council Roads</i>	38
Table 24b Crashes and Casualties by Local Government Area and Severity: <i>Rural: DPTI Roads</i>	40
Table 24c Crashes and Casualties by Local Government Area and Severity: <i>Rural: All Roads</i>	42
Table 25 Top Intersections with highest number of Casualty Crashes 2018	44

Motor Vehicle Type, Movement & Involvement		
Table 26	Motor Vehicles Involved in and Responsible for Crashes by Region and Severity	45
Table 27	Crashes and Casualties by Vehicle Movement of Motor Vehicle Responsible and Severity	46
Table 28	Crashes and Casualties by Pedestrian Responsible, Movement and Severity	46
Table 29	Crashes by Motor Vehicle Type Involved and Severity	47
Speed Involvement		
Table 30	Crashes and Casualties by Speed Involvement and Severity	47
CASUALTIES in 2018		48
Road User		
Table 31	Casualties by Road User Type, Severity, Age & Sex	49
Table 32	Casualties by Unit Type and Severity	50
Table 33	Motor Vehicle Casualties by Position in Vehicle and Severity	50
Seatbelts & Helmets		
Table 34	Casualties by Road User Type, Safety Device and Severity	51
Alcohol		
Table 35	Driver and Motorcycle Rider Casualties with BAC	52
Drugs		
Table 36	Driver and Motorcycle Rider Casualties with Drugs	52
Responsibility		
Table 37a	Road User Involved in and Responsible for Crashes by Age & Sex: <i>Fatal Crashes</i>	53
Table 37b	Road User Involved in and Responsible for Crashes by Age & Sex: <i>Serious Injury Crashes</i>	54
Table 37c	Road User Involved in and Responsible for Crashes by Age & Sex: <i>Minor Injury Crashes</i>	55
Table 37d	Road User Involved in and Responsible for Crashes by Age & Sex: <i>Property Damage Crashes</i>	56
Table 37e	Road User Involved in and Responsible for Crashes by Age & Sex: <i>All Crashes</i>	57
Table 38	Drivers & Motorcycle Riders Involved in and Responsible for Crashes by Licence Type and Severity	58
Table 39a	Drivers & Motorcycle Riders Responsible for Crashes by Licence Type and Age: <i>Fatal Crashes</i>	58
Table 39b	Drivers & Motorcycle Riders Responsible for Crashes by Licence Type and Age: <i>Serious Injury Crashes</i>	59
Table 39c	Drivers & Motorcycle Riders Responsible for Crashes by Licence Type and Age: <i>Minor Injury Crashes</i>	59
Table 39d	Drivers & Motorcycle Riders Responsible for Crashes by Licence Type and Age: <i>Property Damage Crashes</i>	60
Table 39e	Drivers & Motorcycle Riders Responsible for Crashes by Licence Type and Age: <i>All Crashes</i>	60
REFERENCE INFORMATION for South Australia		61
Demographic Data		
Table 40	Estimated Population by Age and Sex	62
Table 41	Licence and Permit Holders by Age and Sex	62
Vehicle Information		
Table 42	Motor Vehicle on Register by Vehicle Type	63
Table 43	Vehicle Kilometres Travelled by Vehicle Type	63

Key Points 2018

- A total of 13 599 crashes were processed for South Australia in 2018 – 75 fatal crashes, 485 serious injury crashes, 4 393 minor injury crashes and 8 646 property damage crashes. This resulted in 80 fatalities, 576 serious injuries and 5 468 minor injuries.
- The estimated cost of casualty crashes to the community in 2018 was \$1.45 billion¹.
- The 80 fatalities that occurred in 2018 resulted in a fatality rate per 100 000 population of 4.61, equal with the national average of 4.6.
- **Greater Adelaide Area** – The number of fatal crashes in the greater Adelaide area substantially decreased in 2018 compared to 2017, as did the number of serious injury crashes. There were 24 fatal crashes, this is 30 less than the previous year and around 42% lower than the previous 5 year average.

There were 284 serious injury crashes in 2018 compared to 322 in 2017, and also fewer than the previous 5 year average of 358. Within Greater Adelaide 29% of fatal crashes were at intersections, down from 31% in 2017.
- **Rural areas** – The decline of fatal crashes in the metro area was slightly offset by an increase in the number in the rural area. There were 51 fatal crashes in rural areas in 2018, 12 more than the previous year and two more than the previous 5 year average.

Serious injury crashes however have declined from 211 in 2017 to 201 in 2018 (5 year average of 246). In rural areas 59% of fatal crashes were single vehicle crashes, such as the vehicle rolling over or hitting objects such as trees. This is a slight decrease from 59% in 2017.
- **Young road users** – The number of 16-19 year old fatalities increased by two fatalities from eight in 2017 to 10 in 2018, the previous five year average was five fatalities. The number of deaths in the 20 – 24 year old range decreased from 12 in 2017 to seven in 2018, and is also down on the previous 5 year average of 11 deaths.

The number of 16 – 24 year olds seriously injured increased from 99 in 2017 to 111 in 2018, yet is still down from the 5 year average of 147 for 16- 24 year olds seriously injured.
- **Older road users** – The number of fatalities of people aged 70 or over has reduced considerably in 2018, 15 people in this age group were killed compared to 25 in 2017 and a 5 year average of 23 fatalities.

Serious injuries have also declined from 110 in 2017 to 83 in 2018, the previous 5 year average is 83 serious injuries for this age group.
- **Drivers/passengers** – Driver (including heavy vehicle driver) fatalities decreased from 46 in 2017 to 41 in 2018. Passenger fatalities increased from 11 in 2017 to 16 in 2018 but remained below the 5 year average of 18 deaths.

Driver (including heavy vehicle driver) serious injuries also decreased from 313 in 2017 to 277 in 2018. Passenger serious injuries dropped from 121 in 2017 to 87 in 2018 and below the 5 year average of 130.
- **Motorcyclists** – Fatalities decreased substantially from 24 in 2017 to 10 in 2018. In 2017 a particularly high number of motorcyclists were killed compared to previous years. The five year average of motorcyclists killed is 13 fatalities.

Serious injuries also declined from 108 in 2017 to 103 in 2018 and below the previous 5 year average of 125 serious injuries.
- **Pedestrians** – Fatalities decreased markedly from 17 in 2017 to six in 2018. This number is well below the average of 15 deaths over the previous 5 years.

Serious injuries have increased for pedestrians. In 2018, 58 pedestrians were seriously injured compared to 41 in 2017, it is however below the 5 year average of 61 pedestrians seriously injured.
- **Cyclists** – the number of cyclists killed rose from two in 2017 to seven in 2018, this is also above the 5 year average of 4 cyclists killed per year.

The number of cyclists seriously injured has also risen from 39 in 2017 to 51 in 2018. Although high it remains below the previous 5 year average of 58 cyclists seriously injured per year.
- **Seatbelts** – 16% of driver and passenger fatalities in 2018 were not wearing a seatbelt at the time of the crash. A significant decrease compared to 38% in 2017 and a previous 5 year average of 27%.

¹ Calculated using *Willingness to Pay* method

Preface

This publication presents information compiled from police reported crashes in South Australia for 2018 and is the fifty first edition in an annual series that commenced with 1967 data.

How crashes are reported and processed?

When a reportable road crash occurs, South Australia Police (SAPOL) collect the data through vehicle crash reports, which are entered into SAPOL's SHIELD system. The reports are then electronically forwarded to the Road Safety section of the Department of Planning, Transport and Infrastructure (DPTI) for further processing and geocoding. The information is checked for accuracy and consistency to ensure the reliability of any published statistics. Processed crash data is stored in the DPTI 'Road Crash Database' (TARS).

The data presented in this report is for information purposes only and should be used with care before drawing conclusions not contained in this report. Details in this publication may differ from information previously released or published due to the database continually being updated with new information. Road crash information contained in this publication is derived from TARS.

Please note data reported within this publication is correct at the time of extraction. Due to continual quality assurances and process updates historical data may not match previous publications.

Scope

Note: The following changes were made to the Property Damage Only (PDO) definition in 2003, 2013, 2016 and 2017:

1 January 2017

The Department of Planning, Transport and Infrastructure (DPTI) processed all casualty crashes and only 'property damage' crashes involving any type of vehicle towed away from the crash or where involving:

- a motorcycle (includes quad bikes), motor scooter, motorised bicycle and regular bicycle, regardless of whether another vehicle was involved,
- any type of heavy vehicle with a GVML > 4.5 tonnes or a bus with 13 seats or more,
- a train or tram colliding with a vehicle or pedestrian within the road related area,
- any type of vehicle colliding with a pedestrian.

1 December 2016

DPTI processed all 'property damage' crashes for the month of December 2016 in accordance with the Australian Transport Safety Bureau (ATSB) guidelines.

Prior to 1 December 2016, the crash statistics included in this publication were confined to those crashes which:

- were reported to SA Police (SAPOL) (excludes SAPOL online crash reporting);
- occurred on a road, defined in the Road Traffic Act 1961;
- were defined by the ATSB publication "Guidelines For Determining Events as Road Crashes in Australia" (published March 2000);
- involved at least one moving vehicle;
- involved at least one person being killed or injured, vehicle towed away, or total property damage of \$5000 or greater; and
- included all crashes involving bicycles, motorcycles and scooters (irrespective of damage value or injury level).

1 January 2013

DPTI only processed 'property damage' crashes with an aggregated damage value of \$5000 or greater, or where a vehicle was towed away.

1 July 2003

DPTI only processed 'property damage' crashes where the value was \$3000, or where a vehicle was towed away. Preceding this, the 'property damage' crash value was \$1000 introduced on 1 January 1998.

Related Publications

All monthly and annual statistical reports are available from DPTI's Road Safety website

http://towardszerotogether.sa.gov.au/road_crash_facts/sa_crashes

**Road Fatalities in South Australia (monthly), Road Fatalities Involving Heavy Vehicles in South Australia (monthly)
Road Crash Serious Injuries in South Australia (monthly), Road Crash Serious Injuries Involving Heavy Vehicles in South Australia (monthly)
Road Crashes in South Australia annual reports, South Australian Road Safety Progress Report (Quarterly), Road Safety Fact Sheets**

Acknowledgements

Acknowledgement is extended to the South Australia Police for supply of reported road crash reports.

Notes

From 1 January 2013, new ABS boundaries were introduced into the coding corresponding to the Greater Adelaide City Statistical Area, replacing the previous metro/rural boundaries. As a consequence, Mt Barker and Adelaide Hills Council, part of Adelaide Plains Council, Barossa and Light Councils are now incorporated into Metropolitan Adelaide.

Definitions & Explanatory Notes

BAC	Blood Alcohol Concentration (mg/100mL).
Bicycle	Any two or three wheeled device operated by pedals and propelled by human power. Includes motorised bicycles.
Bicycle Rider	A person occupying the controlling position of a bicycle.
Bicyclist	A bicycle rider or passenger, often referred to as a cyclist.
Driver	A controller of a motor vehicle other than a motorcycle or bicycle.
Drug	Methamphetamine, MDMA (Ecstasy) and/or THC (cannabis).
DPTI	Department of Planning, Transport & Infrastructure.
Casualty	Any person killed or injured as a result of a crash.
Casualty Crash	Crash where someone had been killed or injured as a result of the crash.
DCA	Definition for Coding Accidents – a coding system to describe the events involved in a crash. The ‘crash-type’ is based on the traffic movements leading up to the crash. Participant intent, as well as actual movement, is used in determining the DCA crash type.
Fatal Crash	A crash for which there is at least one fatality.
Fatality	A person who dies within 30 days of a crash as a result of injuries sustained in that crash.
Heavy Vehicle	Heavy vehicle includes the following vehicle types: Rigid truck, Semi-Trailer, Bus, B Double and other defined special vehicle.
Intersection Crash	A crash for which the first impact occurs at or within a 20 metre radius of an intersection.
Metropolitan	Greater Adelaide City Statistical Area. Comprises of the following Local Government Areas: Adelaide, Burnside, Campbelltown, Charles Sturt, Holdfast Bay, Marion, Mitcham, Norwood, Payneham & St Peters, Onkaparinga, Playford, Port Adelaide & Enfield, Prospect, Salisbury, Tea Tree Gully, Unley, Walkerville, West Torrens, Adelaide Hills, Mount Barker, Gawler and part of Barossa, Light and Adelaide Plains councils.
Mid-block Crash	A crash that occurs between two intersections.
Minor Injury	A person who sustains injuries requiring medical treatment, either by a doctor or in a hospital, as a result of a road crash, who was not admitted to hospital and who does not die as a result of those injuries within 30 days of the crash.
Minor Injury Crash	A crash in which at least one person sustains injury but no person is seriously injured or dies within 30 days of the crash.
Motor Vehicle	Any road vehicle which is mechanically or electrically powered but not operated on rails.
Motorcycle	Any mechanically or electrically propelled two or three wheeled vehicle with or without side-car; includes solo motorcycle, motorcycle with sidecar, motor scooter, mini-bike, and quad bikes.
Motorcycle Rider	A person occupying the controlling portion of a motorcycle.
Motorcyclist	Motorcycle rider or pillion passenger.
Other Road User	Occupants/controllers of animal drawn vehicles, ridden animals, railway vehicles, tram, and other defined special vehicle.
Other Vehicle Type	Animal drawn vehicles, ridden animals, railway vehicles, and tram.
Passenger	Any person, other than the controller, who is in, on, or falling from a road vehicle at the time of the crash, provided a portion of the person is in/on the road vehicle. It does not include those that are boarding or alighting a road vehicle at the time of the crash.
Passenger Vehicle	Includes all cars and car derivatives including 4WDs, vans, utilities and station wagons. Excludes heavy vehicles, light trucks (≤ 4.5 tonnes), motorcycles and bicycles.

Pedestrian	Any person who is standing, walking, playing, lying on the road or alighting or boarding a road vehicle at the time of the crash. It does not include those that have fallen from a vehicle. Also includes riders and passengers of motorised wheelchairs/wheelchairs, small wheeled vehicles and gopher users.
Pillion Passenger	A passenger on but not controlling a motorcycle.
Property Damage Crash	A crash resulting in property damage in excess of the prescribed amount in which no person is injured or dies within 30 days of the crash.
Road Crash	Any apparent unpremeditated event reported to the police and resulting in death, injury or property damage in excess of the prescribed amount, and attributed to the movement of the road vehicle on a road.
Road User	Any person who is a pedestrian, rider, or the occupant of a road vehicle.
Rural	Area outside of metropolitan Adelaide. Comprises of the following local government areas: Ceduna, Cleve, Elliston, Franklin Harbor, Kimba, Lower Eyre Peninsula, Port Lincoln, Streaky Bay, Tumby Bay, Whyalla, Cooper Pedy, Finders Ranges, Port Augusta, Roxby Downs, Alexandrina, Kangaroo Island, Victor Harbor, Yankalilla, Grant, Mount Gambier, Naracoorte Lucindale, Robe, Tatiara, Wattle Range, Berri & Barmera, Karoonda East Murray, Loxton Waikerie, Mid Murray, Murray Bridge, Renmark Paringa, Southern Mallee, The Coorong, Barunga West, Calre & Gilbert Valleys, Copper Coast, Goyder, Mount Remarkable, Northern Areas, Orroroo/Carrieton, Peterborough, Port Pirie, Wakefield, Yorke Peninsula and part of Barossa, Light and Adelaide Plains councils.
Serious Casualty	A fatality or serious injury.
Serious Injury Crash	A non-fatal crash in which at least one person is seriously injured.
Serious Injury	A person who sustains injuries and is admitted to hospital for a minimum period of an overnight stay as a result of a road crash and who does not die as a result of those injuries within 30 days of the crash.
Serious Injury Crash	A non-fatal crash in which at least one person is seriously injured.
Vehicle Occupant	Driver or passenger within a motor vehicle.

Speed definition

Based on NSW Roads and Traffic Authority criteria for determining whether or not a crash is to be considered as having involved speed as a contributing factor. A motor vehicle is assessed as having been speeding if it satisfies the conditions described below:

- a) The vehicle's controller (driver or rider) was charged with a speeding offence; or the vehicle was described by police as travelling at excessive speed; or the stated speed of the vehicle was in excess of the speed limit; or the vehicle weight or the speed of the vehicle was faster than that allowed for the licence class of the driver or rider, or the vehicle weight, OR
- b) The vehicle was performing a manoeuvre characteristic of excessive speed, that is:
 - while on a curve the vehicle jack-knifed, skidded, slid or the controller lost control; or
 - the vehicle ran off the road while negotiating a bend or turning a corner and the controller was not distracted by something or disadvantaged by drowsiness or sudden illness; and
 - was not swerving to avoid another vehicle, animal or object and the vehicle did not suffer equipment failure.

CRASH & CASUALTY TRENDS

Historical Data
Fatality Rates
Interstate and International Comparisons
Causes of Death
Road User Type
Age & Sex
Region

Table 1: Trends in South Australia, 1995 – 2018

Year	Crashes						Casualties					Vehicles on Register ¹ ('000)	Licence Holders ² ('000)	Population ³ ('000)	Vehicle Kilometers Travelled ⁴ ('000 000)	Fatalities per		
	Fatal Crashes	Serious Injury Crashes	Minor Injury Crashes	TOTAL Casualty Crashes	Property Damage Crashes	ALL Crashes	Fatalities	Serious Injuries	Minor Injuries	ALL Casualties	10, 000 Vehicles					10,000 Licence Holders ⁵	100,000 Population	100, (M) Vehicle Kilometers Travelled
1995	164	1185	5097	6446	32844	39290	182	1521	6638	8341	945	975	1469	13195	1.93	0.98	12.39	1.38
1996	162	1324	5023	6509	32432	38941	181	1720	6775	8676	959	979	1474	-	1.89	1.09	12.28	-
1997	124	1168	5138	6430	32442	38872	149	1509	6716	8374	969	995	1479	-	1.54	0.80	10.07	-
1998	152	1225	5551	6928	32664	39592	168	1566	7345	9079	995	995	1487	13974	1.69	0.85	11.30	1.20
1999	132	1238	6047	7417	34287	41704	153	1607	8071	9831	1010	1012	1493	13081	1.52	0.85	10.25	1.17
2000	151	1229	6433	7813	33172	40985	166	1627	8501	10294	1011	1025	1498	13153	1.64	1.04	11.08	1.26
2001	137	1245	6351	7733	33041	40774	154	1603	8497	10254	1023	1045	1502	15085	1.51	0.85	10.25	1.02
2002	138	1199	6249	7586	32525	40111	154	1538	8382	10074	1045	1047	1522	14855	1.47	0.88	10.12	1.04
2003	135	1169	5786	7090	23220	30310	156	1470	7597	9223	1034	1052	1527	14963	1.51	0.85	10.21	1.04
2004	128	1071	5521	6720	15548	22268	139	1331	7297	8767	1049	1072	1534	15241	1.32	0.93	9.06	0.91
2005	126	994	5106	6226	14945	21171	147	1296	6629	8072	1065	1094	1542	14533	1.38	0.84	9.53	1.01
2006	104	1092	5009	6205	14513	20718	117	1358	6489	7964	1085	1042	1555	15535	1.08	0.77	7.53	0.75
2007	108	1090	5295	6493	15230	21723	125	1368	6961	8454	1107	1073	1585	14212	1.13	0.62	7.89	0.88
2008	87	996	5615	6698	15223	21921	99	1217	7174	8490	1171	1094	1602	-	0.85	0.56	6.18	-
2009	104	908	5213	6225	15506	21731	119	1108	6618	7845	1201	1135	1623	-	0.99	0.65	7.33	-
2010	105	886	5424	6415	15877	22292	118	1050	6907	8075	1226	1136	1645	14615	0.96	0.64	7.17	0.81
2011	95	781	5471	6347	16970	23317	103	932	6896	7931	1265	1141	1657	-	0.81	0.53	6.22	-
2012	86	637	5377	6100	16729	22829	94	761	6624	7479	1285	1155	1655	16313	0.73	0.56	5.68	0.58
2013	89	666	5037	5792	10883	16675	97	790	6290	7177	1305	1186	1671	-	0.74	0.51	5.80	-
2014	96	594	5005	5695	10467	16162	108	711	6163	6982	1322	1196	1686	16715	0.82	0.53	6.41	0.65
2015	96	657	4616	5369	10063	15432	102	759	5800	6661	1349	1204	1699	-	0.76	0.52	6.00	-
2016	77	574	4562	5213	11562	16775	86	692	5787	6565	1419	1225	1708	16915	0.61	0.51	5.03	0.51
2017	93	533	4374	5000	8237	13237	100	622	5515	6237	1442	1238	1723	-	0.69	0.57	5.80	-
2018	75	485	4393	4953	8646	13599	80	576	5468	6124	1443	1245	1736	17817	0.55	0.41	4.61	0.45

¹ At June 2018. Excludes tractors, trailers, caravans, plant and equipment. Source: TRUMPS database, Registration & Licensing Section, DPTI

² At June 2018. Source: TRUMPS database, Registration & Licensing Section, DPTI

³ Population as of June 2018. Source: Australian Bureau of Statistics, *Australian Demographic Statistics*, cat.no. 3101.0.

⁴ Travel for the year ended June 2018. Source: Australian Bureau of Statistics, *Survey of Motor Vehicle Use*, cat. no. 9208.0.

⁵ Licence holder fatality rates are based on driver and rider fatalities only.

Note:

Changes were made to the Property Damage Only (PDO) definition in 2003, 2013, 2016 and 2017. Refer to **Scope**, page 5 for full details.

Figure 1: Data Trends in South Australia, 1995 - 2018

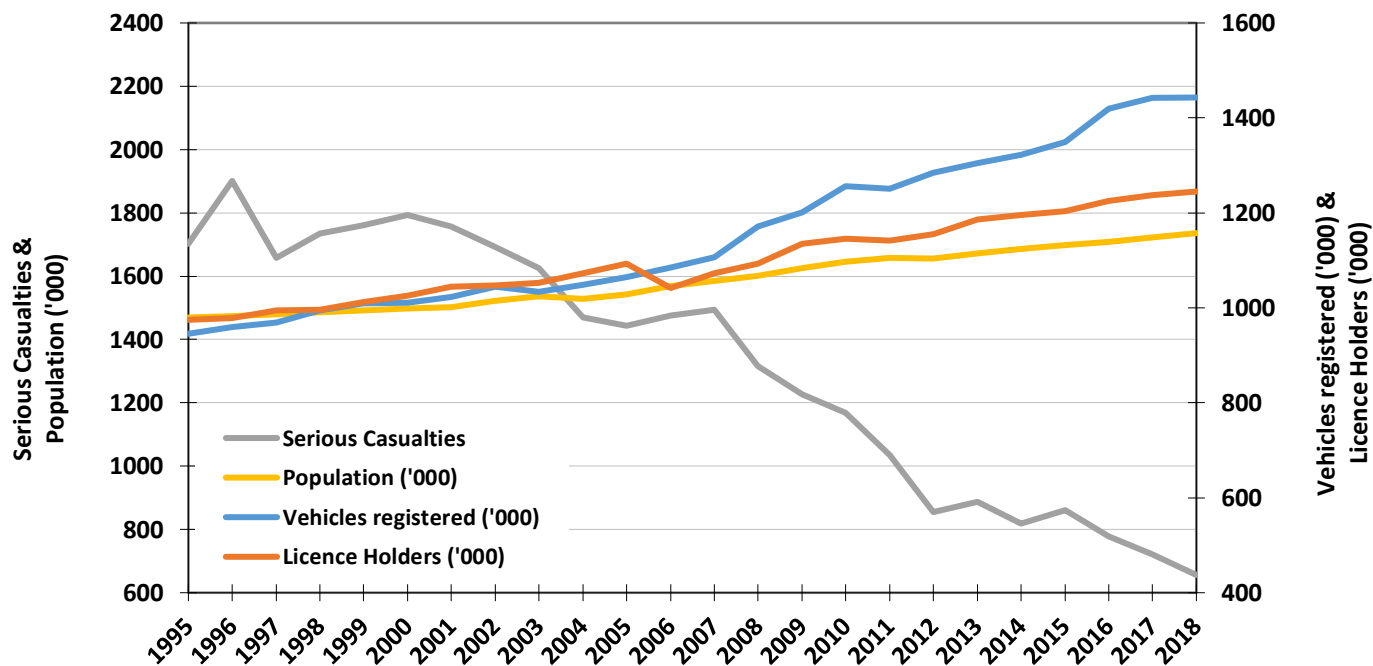
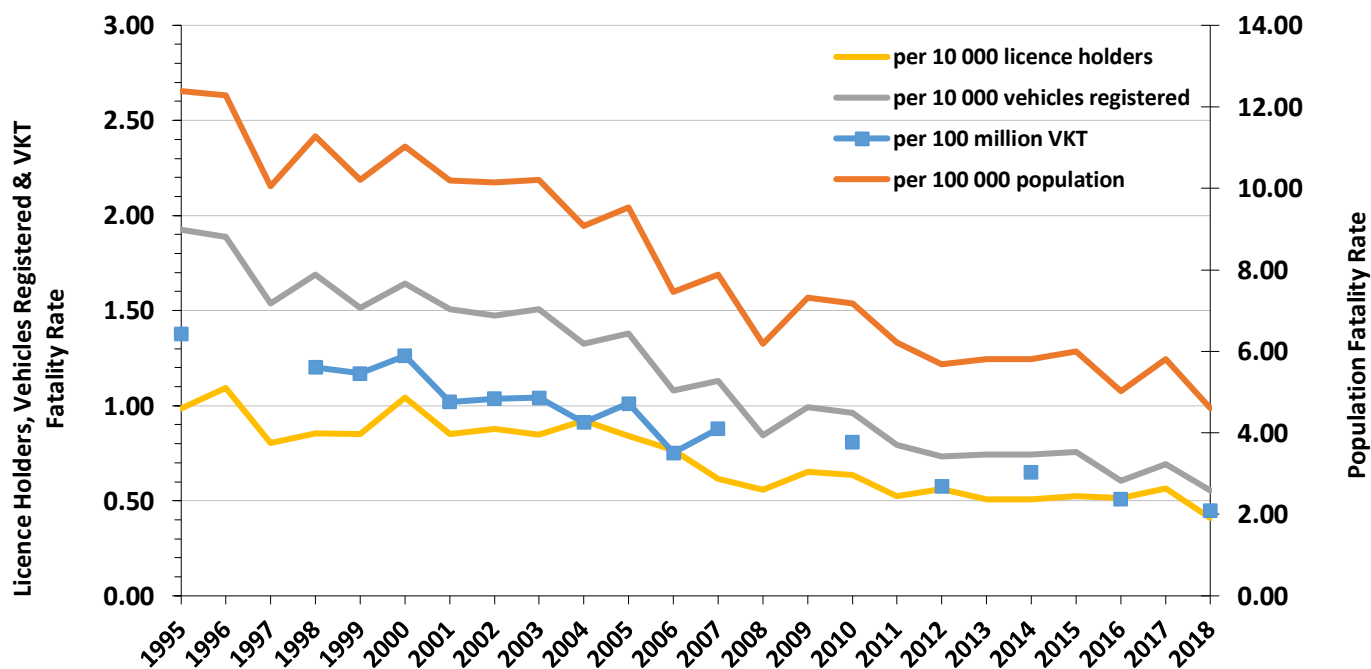


Figure 2: Fatality Rates in South Australia, 1995 - 2018



Note:

Changes were made to the Property Damage Only (PDO) definition in 1998, 2003, 2013, 2016 and 2017. Refer to **Scope**, page 5 for full details.

Table 2: Comparison with other Australian States¹, 2018

	Fatalities	Vehicles on register ² ('000)	Population ³ ('000)	Fatalities per 10 000 vehicles	Fatalities per 100 000 population
SOUTH AUSTRALIA	80	1,443	1,736	0.55	4.61
New South Wales	357	5,618	7,988	0.64	4.47
Victoria	213	4,923	6,461	0.43	3.30
Queensland	245	4,045	5,012	0.61	4.89
Western Australia	158	2,232	2,595	0.71	6.09
Tasmania	33	481	528	0.69	6.25
Australian Capital Territory	9	303	421	0.30	2.14
Northern Territory	50	163	247	3.08	20.21
AUSTRALIA	1,145	19,207	24,993	0.60	4.58

Table 3: Road Crash Fatalities by Age Group compared with Deaths Registered in South Australia, 2018

Age Groups	Deaths Registered in South Australia ²	Road Fatalities ³	
		Number	% of All Deaths
0-14	95	3	3%
15-19	35	11	31%
20-24	37	7	19%
25-29	55	6	11%
30-34	71	3	4%
35-39	85	4	5%
40-49	326	13	4%
50-59	852	7	1%
60-69	1,584	11	1%
70+	10,431	15	0%
Unknown	3	0	0%
TOTAL	13,574	80	1%

¹ Australian data based on information published by the Bureau of Infrastructure, Transport and Regional Economics (BITRE) for 2018 Statistical Summary.

² Source: Australian Bureau of Statistics, *Deaths, Australia 2018*, cat.no. 3302.0.

³ Source: DPTI's TARS road crash database.

Note:

Changes were made to the Property Damage Only (PDO) definition in 1998, 2003, 2013, 2016 and 2017. Refer to **Scope**, page 5 for full details.

Table 4: Casualties by Road User Type and Severity, 1995 - 2018

Year	Vehicle Occupant						Motorcyclist						Pedestrian			Bicyclist			Other Road User			ALL ROAD USERS		
	Driver			Passenger			Rider			Pillion Passenger			F	SI	MI	F	SI	MI	F	SI	MI	F	SI	MI
	F	SI	MI	F	SI	MI	F	SI	MI	F	SI	MI												
1995	84	648	3571	36	432	1823	12	153	359	0	22	50	40	186	411	8	80	421	2	0	3	182	1521	6638
1996	92	779	3615	40	522	1922	15	189	365	3	14	33	24	153	428	7	59	403	0	4	9	181	1720	6775
1997	67	712	3724	44	408	1749	13	144	353	1	15	31	20	147	427	4	79	427	0	4	5	149	1509	6716
1998	72	779	4213	44	383	1972	13	157	314	0	20	26	35	142	402	4	79	408	0	6	10	168	1566	7345
1999	71	749	4749	38	456	2173	15	123	277	0	14	20	26	178	419	3	84	425	0	3	8	153	1607	8071
2000	91	739	5132	37	490	2191	16	158	323	0	12	25	21	151	409	1	75	412	0	2	9	166	1627	8501
2001	76	809	5023	32	419	2298	13	156	300	1	13	21	26	143	426	6	58	417	0	5	12	154	1603	8497
2002	72	753	5012	39	434	2196	20	153	321	1	7	22	19	129	425	3	59	402	0	3	4	154	1538	8382
2003	77	783	4663	44	343	1896	12	144	280	1	19	27	17	115	359	5	63	367	0	3	5	156	1470	7597
2004	80	687	4320	23	316	1915	20	157	288	1	9	20	12	104	369	3	57	382	0	1	3	139	1331	7297
2005	74	646	3943	39	342	1598	18	125	276	2	11	19	11	111	374	3	61	418	0	0	1	147	1296	6629
2006	58	670	3772	20	302	1586	22	178	322	1	17	22	12	111	365	4	80	419	0	0	3	117	1358	6489
2007	58	685	4011	37	347	1762	8	162	409	0	10	17	17	108	330	5	56	429	0	0	3	125	1368	6961
2008	45	582	4211	24	264	1720	16	176	435	1	8	23	12	120	334	1	67	447	0	0	4	99	1217	7174
2009	60	549	4010	32	243	1479	14	159	389	1	9	15	10	89	279	2	59	442	0	0	4	119	1108	6618
2010	57	500	4205	24	211	1574	16	146	388	0	7	20	16	103	245	5	82	470	0	1	5	118	1050	6907
2011	40	445	4236	22	193	1505	20	143	361	1	9	19	17	77	269	3	61	499	0	4	7	103	932	6896
2012	52	350	4027	14	137	1431	13	113	339	2	6	14	10	77	296	3	78	516	0	0	1	94	761	6624
2013	48	384	3860	17	122	1326	12	129	369	0	5	18	15	87	231	5	63	486	0	0	0	97	790	6290
2014	52	320	3779	24	135	1225	11	127	417	0	3	20	17	62	227	4	64	495	0	0	0	108	711	6163
2015	52	358	3444	17	132	1247	11	139	386	0	6	13	18	50	205	4	74	505	0	0	0	102	759	5800
2016	41	325	3495	23	140	1200	8	105	390	0	4	9	9	66	245	5	52	448	0	0	0	86	692	5787
2017	46	313	3351	11	121	1082	24	105	377	0	3	9	17	41	246	2	39	450	0	0	0	100	622	5515
2018	41	277	3317	16	87	1079	10	97	391	0	6	11	6	58	233	7	51	435	0	0	2	80	576	5468

F – Fatality, SI – Serious Injury, MI – Minor Injury

Note:

Changes were made to the Property Damage Only (PDO) definition in 1998, 2003, 2013, 2016 and 2017. Refer to **Scope**, page 5 for full details.

Table 5: Casualties by Age Group and Severity, 1995 – 2018

Year	0-15			16-19			20-24			25-29			30-39			40-49			50-59			60-69			70+			Unknown			ALL CASUALTIES		
	F	SI	MI	F	SI	MI	F	SI	MI	F	SI	MI	F	SI	MI	F	SI	MI	F	SI	MI	F	SI	MI	F	SI	MI	F	SI	MI	F	SI	MI
1995	14	132	597	22	225	884	24	255	1094	16	168	716	39	226	1056	18	154	807	10	94	450	19	69	308	20	99	330	0	99	396	182	1521	6638
1996	12	162	642	18	230	931	27	279	1002	21	203	708	26	267	1155	23	160	824	12	98	475	15	101	286	26	118	362	1	102	390	181	1720	6775
1997	8	149	603	19	194	840	21	233	973	13	149	718	28	255	1127	11	150	866	11	91	524	12	79	307	24	110	350	2	99	408	149	1509	6716
1998	10	134	623	18	251	979	17	212	1099	12	172	820	25	225	1207	21	181	889	12	103	555	14	66	315	37	120	346	2	102	512	168	1566	7345
1999	14	147	662	21	218	987	23	222	1056	11	136	904	22	225	1337	18	172	996	11	110	620	13	81	347	20	118	343	0	178	819	153	1607	8071
2000	11	121	547	26	212	1115	16	229	1180	23	158	893	21	225	1427	21	196	1042	10	113	698	14	81	396	24	111	376	0	181	827	166	1627	8501
2001	10	101	519	16	223	1092	14	210	1168	16	159	887	32	260	1405	14	192	1120	11	128	724	13	72	346	28	80	388	0	178	848	154	1603	8497
2002	16	107	461	16	198	1142	18	213	1159	17	164	875	28	241	1385	24	177	1088	10	104	680	5	54	349	20	108	416	0	172	827	154	1538	8382
2003	11	81	434	21	189	993	20	225	1060	11	147	750	26	244	1282	19	182	1081	18	119	701	10	62	329	20	100	331	0	121	636	156	1470	7597
2004	7	64	423	7	199	905	27	212	1045	17	135	652	26	207	1204	18	169	961	17	98	626	11	56	351	9	84	369	0	107	761	139	1331	7297
2005	8	86	349	18	173	874	28	195	920	19	115	616	16	205	1099	19	157	956	11	121	626	11	77	341	17	94	315	0	73	533	147	1296	6629
2006	3	74	441	12	181	707	17	186	932	11	129	610	17	225	1028	23	181	901	14	122	681	10	70	355	10	88	344	0	102	490	117	1358	6489
2007	6	60	402	18	173	804	16	210	970	14	137	703	14	214	1102	13	167	982	10	139	691	5	73	352	29	100	388	0	95	567	125	1368	6961
2008	5	51	439	16	157	812	12	177	921	10	114	700	19	211	1156	9	164	1064	13	110	797	4	75	434	11	91	365	0	67	486	99	1217	7174
2009	4	60	393	20	138	765	22	138	827	10	124	682	17	179	1120	20	132	1040	12	112	728	2	81	417	12	94	320	0	50	326	119	1108	6618
2010	5	49	397	19	110	737	12	131	846	5	121	740	16	145	1156	22	155	1013	17	112	879	8	72	406	14	120	381	0	35	352	118	1050	6907
2011	4	43	388	6	94	694	5	127	937	9	95	688	22	146	1177	22	141	1055	12	106	833	4	77	460	19	73	390	0	30	274	103	932	6896
2012	3	32	393	7	76	616	10	104	837	7	75	695	9	106	1139	16	112	997	11	91	785	9	70	464	22	73	423	0	22	275	94	761	6624
2013	6	37	349	2	50	569	13	93	757	5	81	692	6	112	1049	20	120	959	12	117	769	9	70	457	24	82	451	0	28	238	97	790	6290
2014	7	26	337	6	80	517	11	90	764	9	71	652	13	99	998	21	122	966	6	93	773	13	54	510	22	57	423	0	19	223	108	711	6163
2015	5	28	381	7	71	525	9	84	687	7	60	594	13	128	925	13	106	826	11	105	789	14	78	442	23	80	431	0	19	200	102	759	5800
2016	5	33	382	3	81	508	12	86	733	9	76	592	11	82	923	15	94	824	3	97	711	5	51	481	23	87	438	0	5	195	86	692	5787
2017	3	26	411	8	43	487	12	56	581	8	54	560	10	81	833	11	83	806	11	88	701	12	60	450	25	110	438	0	21	248	100	622	5515
2018	4	26	382	10	48	447	7	63	606	6	50	549	7	72	904	13	79	785	7	83	743	11	55	470	15	83	425	0	17	157	80	576	5468

F – Fatality, SI – Serious Injury, MI – Minor Injury

Note:

Changes were made to the Property Damage Only (PDO) definition in 1998, 2003, 2013, 2016 and 2017. Refer to **Scope**, page 5 for full details.

Table 6: Casualties by Sex and Severity, 1995 – 2018

Year	Male			Female			Unknown			ALL PERSONS		
	F	SI	MI	F	SI	MI	F	SI	MI	F	SI	MI
1995	130	967	3233	52	553	3355	0	1	50	182	1521	6638
1996	132	1046	3170	48	669	3571	1	5	34	181	1720	6775
1997	98	947	3173	51	554	3488	0	8	55	149	1509	6716
1998	111	941	3277	55	605	3897	2	20	171	168	1566	7345
1999	96	965	3715	56	613	4192	1	29	164	153	1607	8071
2000	121	981	3914	45	626	4479	0	20	108	166	1627	8501
2001	113	974	3929	41	621	4504	0	8	64	154	1603	8497
2002	117	961	3951	37	574	4426	0	3	5	154	1538	8382
2003	109	914	3596	47	552	3995	0	4	6	156	1470	7597
2004	111	823	3467	28	507	3808	0	1	22	139	1331	7297
2005	108	831	3284	39	464	3320	0	1	25	147	1296	6629
2006	89	873	3082	28	485	3401	0	0	6	117	1358	6489
2007	94	871	3315	31	497	3621	0	0	25	125	1368	6961
2008	74	758	3369	25	459	3794	0	0	11	99	1217	7174
2009	92	702	3182	27	404	3419	0	2	17	119	1108	6618
2010	75	663	3259	43	386	3635	0	1	13	118	1050	6907
2011	76	584	3278	27	348	3610	0	0	8	103	932	6896
2012	72	499	3150	22	262	3464	0	0	10	94	761	6624
2013	68	502	2940	29	288	3338	0	0	12	97	790	6290
2014	76	472	2922	32	239	3239	0	0	2	108	711	6163
2015	66	502	2773	36	256	3021	0	1	6	102	759	5800
2016	56	430	2800	30	262	2975	0	0	12	86	692	5787
2017	80	391	2689	20	231	2816	0	0	10	100	622	5515
2018	62	370	2605	18	206	2849	0	0	14	80	576	5468

F – Fatality, SI – Serious Injury, MI – Minor Injury

Note:

Changes were made to the Property Damage Only (PDO) definition in 1998, 2003, 2013, 2016 and 2017. Refer to **Scope**, page 5 for full details.

Table 7: Crashes and Casualties by Region¹ and Severity, 1995 – 2018

Year	Metropolitan Adelaide ¹					Rural South Australia ¹												
	Crashes					Casualties				Crashes					Casualties			
	Fatal Crashes	Serious Injury Crashes	Minor Injury Crashes	Property Damage Crashes	ALL CRASHES	Fatalities	Serious Injuries	Minor Injuries	ALL CASUALTIES	Fatal Crashes	Serious Injury Crashes	Minor Injury Crashes	Property Damage Crashes	ALL CRASHES	Fatalities	Serious Injuries	Minor Injuries	ALL CASUALTIES
1995	77	677	4120	27726	32600	77	817	5152	6046	87	509	978	5122	6696	105	704	1486	2295
1996	68	700	4031	27232	32031	73	861	5206	6140	94	625	991	5194	6904	108	860	1568	2536
1997	52	665	4199	27194	32110	55	800	5294	6149	72	504	928	5231	6735	94	711	1410	2215
1998	65	698	4579	27285	32627	70	855	5868	6793	87	527	970	5360	6944	98	710	1474	2282
1999	56	674	5091	28790	34611	61	830	6618	7509	76	564	956	5499	7095	92	777	1454	2323
2000	63	681	5423	28055	34222	68	842	6983	7893	88	548	1009	5117	6762	98	785	1516	2399
2001	64	647	5369	27988	34068	67	768	6950	7785	73	598	983	5051	6705	87	835	1548	2470
2002	49	621	5218	27582	33470	54	754	6743	7551	89	578	1031	4942	6640	100	784	1639	2523
2003	57	585	4839	19316	24797	62	731	6188	6981	78	584	947	3902	5511	94	739	1409	2242
2004	61	577	4583	12713	17934	64	692	5903	6659	67	494	938	2835	4334	75	639	1394	2108
2005	47	513	4212	12225	16997	51	620	5300	5971	79	481	894	2720	4174	96	676	1329	2101
2006	50	619	4146	11919	16734	54	730	5159	5943	54	473	863	2594	3984	63	628	1330	2021
2007	45	614	4380	12504	17543	49	722	5565	6336	63	476	915	2726	4180	76	646	1396	2118
2008	40	557	4643	12516	17756	44	649	5766	6459	47	439	972	2707	4165	55	568	1408	2031
2009	36	494	4287	12640	17457	41	565	5314	5920	68	414	926	2866	4274	78	543	1304	1925
2010	44	478	4505	12971	17998	45	531	5632	6208	61	408	919	2906	4294	73	519	1275	1867
2011	41	419	4572	14088	19120	42	472	5603	6117	54	362	899	2883	4198	61	460	1293	1814
2012	29	347	4464	13915	18755	31	384	5378	5793	57	290	913	2814	4074	63	377	1246	1686
2013	41	394	4379	9242	14056	43	459	5375	5877	48	272	658	1641	2619	54	331	915	1300
2014	37	346	4328	8920	13631	38	376	5203	5617	59	248	677	1549	2533	70	335	960	1365
2015	43	391	3916	8613	12963	43	428	4800	5271	53	266	700	1450	2469	59	331	1000	1390
2016	32	339	3881	9886	14138	34	382	4762	5178	45	235	681	1676	2637	52	310	1025	1387
2017	54	322	3703	6977	11056	56	359	4583	4998	39	211	671	1260	2181	44	263	932	1239
2018	24	284	3758	7466	11532	24	323	4572	4919	51	201	635	1180	2067	56	253	896	1205

¹ From 2013 onwards, regional boundaries have been adjusted to the new ABS Greater Adelaide Statistical Division – For more information please look at *Preface* and *Definitions & Explanatory Notes*

Note:

Changes were made to the Property Damage Only (PDO) definition in 1998, 2003, 2013, 2016 and 2017. Refer to **Scope**, page 5 for full details.

Road Crashes in 2018

Time Distribution
Crash Types
Definition for Coding Accidents
Crash Location
Top Intersections
Motor Vehicle Types
Involvement and Responsibility
Speed

Table 8: Crashes and Casualties during Holiday Periods by Severity

Period	Crashes					Casualties			
	Fatal Crashes	Serious Injury Crashes	Minor Injury Crashes	Property Damage Crashes	ALL CRASHES	Fatalities	Serious Injuries	Minor Injuries	ALL CASUALTIES
New Year (1 January) (1 Day)	0	2	7	14	23	0	2	14	16
Australia Day Weekend (26 January - 28 January) (3 Days)	0	4	19	35	58	0	5	24	29
Adelaide Cup (10 March – 12 March) (3 Days)	0	2	33	39	74	0	3	47	50
Easter (30 March – 2 April) (4 Days)	0	8	30	65	103	0	10	45	55
Anzac Day (25 April) (1 Day)	0	0	8	11	19	0	0	9	9
Queen's Birthday (9 June – 11 June) (3 Days)	0	3	18	36	57	0	4	24	28
Labour Day (29 September – 1 October) (3 Days)	0	4	26	63	93	0	5	33	38
Christmas Period (22 December - 31 December) (10 Days)	4	16	96	143	259	5	17	139	161
SCHOOL HOLIDAYS									
January (1 January – 28 January) (28 Days)	5	29	274	542	850	5	38	366	409
April (14 April – 29 April) (16 Days)	5	25	152	305	487	5	30	195	230
July (7 July - 22 July) (16 Days)	4	14	167	372	557	4	20	213	237
September (29 September – 14 October) (16 Days)	2	23	176	371	572	2	27	232	261
December (15 December – 31 December) (17 Days)	6	23	174	302	505	7	25	239	271

Table 9a: Casualty Crashes by Time of Day, Day of Week

Time Period	Day of Week							TOTAL
	Monday	Tuesday	Wednesday	Thursday	Friday	Saturday	Sunday	
00:00 - 01:59	4	6	9	12	10	17	32	90
02:00 - 03:59	9	5	7	4	3	16	13	57
04:00 - 05:59	14	8	10	13	11	7	11	74
06:00 - 07:59	62	75	74	74	66	29	21	401
08:00 - 09:59	98	123	122	128	96	68	40	675
10:00 - 11:59	65	75	91	72	82	113	76	574
12:00 - 13:59	81	105	73	89	102	92	69	611
14:00 - 15:59	113	144	117	119	131	65	92	781
16:00 - 17:59	126	142	158	168	120	80	61	855
18:00 - 19:59	59	74	75	70	80	40	46	444
20:00 - 21:59	44	37	28	34	41	32	28	244
22:00 - 23:59	17	20	17	18	32	23	20	147
TOTAL	692	814	781	801	774	582	509	4953

Figure 3: Casualty Crashes by Time of Day, Day of Week

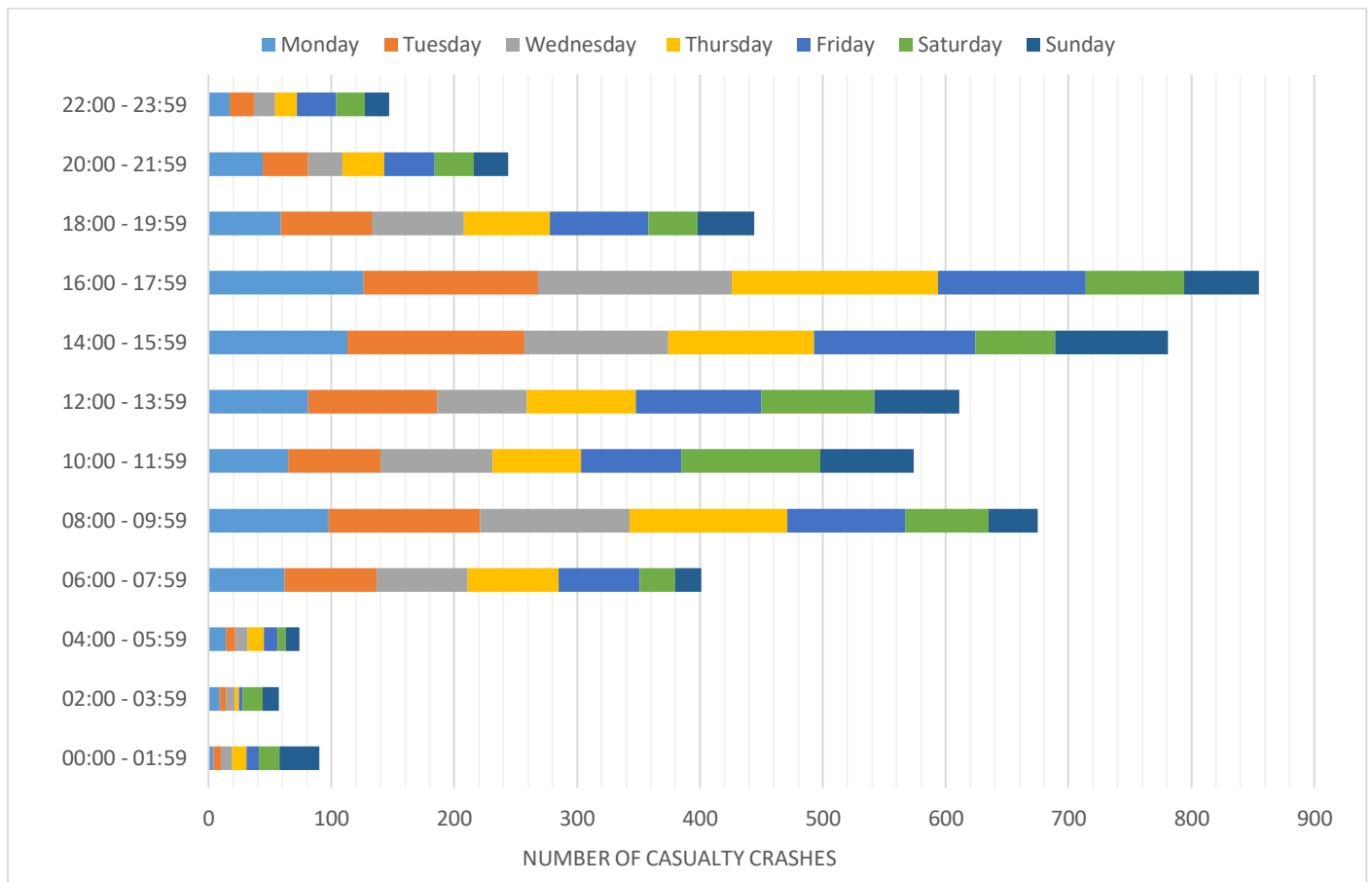


Table 9b: Casualties by Time of Day, Day of Week

Time Period	Day of Week							TOTAL
	Monday	Tuesday	Wednesday	Thursday	Friday	Saturday	Sunday	
00:00 - 01:59	4	7	9	14	13	20	39	106
02:00 - 03:59	13	5	8	4	3	19	23	75
04:00 - 05:59	20	9	11	13	14	9	16	92
06:00 - 07:59	73	84	89	84	74	33	26	463
08:00 - 09:59	115	151	138	142	121	82	41	790
10:00 - 11:59	73	92	112	90	99	140	107	713
12:00 - 13:59	107	128	91	111	129	133	94	793
14:00 - 15:59	143	179	149	151	172	91	111	996
16:00 - 17:59	148	177	190	192	145	100	77	1029
18:00 - 19:59	79	88	91	84	103	62	53	560
20:00 - 21:59	71	47	32	39	51	46	41	327
22:00 - 23:59	19	23	22	21	40	32	23	180
TOTAL	865	990	942	945	964	767	651	6124

Table 9c: All Crashes by Time of Day, Day of Week

Time Period	Day of Week							TOTAL
	Monday	Tuesday	Wednesday	Thursday	Friday	Saturday	Sunday	
00:00 - 01:59	26	22	29	28	36	70	88	299
02:00 - 03:59	20	23	18	14	26	54	44	199
04:00 - 05:59	43	39	30	39	30	36	38	255
06:00 - 07:59	160	224	204	175	161	78	53	1055
08:00 - 09:59	263	332	331	345	275	162	88	1796
10:00 - 11:59	184	203	222	221	223	252	159	1464
12:00 - 13:59	197	247	199	221	260	250	168	1542
14:00 - 15:59	326	358	326	368	372	195	206	2151
16:00 - 17:59	330	374	433	453	391	217	186	2384
18:00 - 19:59	148	181	192	214	252	131	139	1257
20:00 - 21:59	105	91	104	111	111	108	81	711
22:00 - 23:59	48	59	52	59	102	104	62	486
TOTAL	1850	2153	2140	2248	2239	1657	1312	13599

Table 10: Crashes and Casualties by Month of Year and Severity

Month	Crashes				ALL CRASHES	Casualties			
	Fatal Crashes	Serious Injury Crashes	Minor Injury Crashes	Property Damage Crashes		Fatalities	Serious Injuries	Minor Injuries	ALL CASUALTIES
January	5	33	322	596	956	5	42	419	466
February	3	35	373	664	1075	3	37	447	487
March	11	45	406	775	1237	11	60	502	573
April	7	50	354	690	1101	7	59	441	507
May	7	36	392	787	1222	7	42	461	510
June	5	40	340	727	1112	5	48	417	470
July	4	35	343	707	1089	4	44	436	484
August	2	53	371	857	1283	3	58	468	529
September	9	44	368	732	1153	10	57	446	513
October	4	36	389	754	1183	4	43	491	538
November	10	34	371	724	1139	12	34	461	507
December	8	44	364	633	1049	9	52	479	540
TOTAL	75	485	4393	8646	13599	80	576	5468	6124

Table 11a: Crashes and Casualties by Crash Type and Severity:
Metropolitan Adelaide

	Crashes					Casualties			
	Fatal Crashes	Serious Injury Crashes	Minor Injury Crashes	Property Damage Crashes	ALL CRASHES	Fatalities	Serious Injuries	Minor Injuries	ALL CASUALTIES
MULTI VEHICLE									
Head On	3	16	73	99	191	3	25	121	149
Rear End	0	25	1296	2073	3394	0	26	1571	1597
Side Swipe	2	15	275	1079	1371	2	18	314	334
Right Angle	2	47	790	1353	2192	2	52	996	1050
Right Turn	3	34	385	583	1005	3	38	522	563
Hit Parked Vehicle	0	13	152	750	915	0	17	171	188
Sub-total	10	150	2971	5937	9068	10	176	3695	3881
SINGLE VEHICLE									
Hit Fixed Object	9	55	406	1149	1619	9	62	467	538
Hit Pedestrian	3	45	192	132	372	3	50	209	262
Hit Animal	0	1	8	45	54	0	1	8	9
Hit Object on Road	0	2	7	25	34	0	2	8	10
Roll Over	1	27	145	84	257	1	28	154	183
Left Road Out of Control	1	1	16	41	59	1	1	18	20
Other	0	3	13	53	69	0	3	13	16
Sub -total	14	134	787	1529	2464	14	147	877	1038
TOTAL	24	284	3758	7466	11532	24	323	4572	4919

Table 11b: Crashes and Casualties by Crash Type and Severity:
Rural

	Crashes					Casualties			
	Fatal Crashes	Serious Injury Crashes	Minor Injury Crashes	Property Damage Crashes	ALL CRASHES	Fatalities	Serious Injuries	Minor Injuries	ALL CASUALTIES
MULTI VEHICLE									
Head On	12	14	16	27	69	15	29	41	85
Rear End	3	13	45	121	182	3	18	62	83
Side Swipe	0	6	29	65	100	0	6	47	53
Right Angle	3	17	120	197	337	3	28	185	216
Right Turn	1	6	18	34	59	1	8	36	45
Hit Parked Vehicle	2	1	21	71	95	3	2	31	36
Sub-total	21	57	249	515	842	25	91	402	518
SINGLE VEHICLE									
Hit Fixed Object	15	65	178	351	609	16	73	217	306
Hit Pedestrian	3	9	22	13	47	3	9	24	36
Hit Animal	2	7	21	102	132	2	7	26	35
Hit Object on Road	0	1	0	8	9	0	1	0	1
Roll Over	10	57	136	136	339	10	67	190	267
Left Road Out of Control	0	4	22	44	70	0	4	28	32
Other	0	1	7	11	19	0	1	9	10
Sub -total	30	144	386	665	1225	31	162	494	687
TOTAL	51	201	635	1180	2067	56	253	896	1205

Table 11c: Crashes and Casualties by Crash Type and Severity:
South Australia

	Crashes				Casualties				
	Fatal Crashes	Serious Injury Crashes	Minor Injury Crashes	Property Damage Crashes	ALL CRASHES	Fatalities	Serious Injuries	Minor Injuries	ALL CASUALTIES
MULTI VEHICLE									
Head On	15	30	89	126	260	18	54	162	234
Rear End	3	38	1341	2194	3576	3	44	1633	1680
Side Swipe	2	21	304	1144	1471	2	24	361	387
Right Angle	5	64	910	1550	2529	5	80	1181	1266
Right Turn	4	40	403	617	1064	4	46	558	608
Hit Parked Vehicle	2	14	173	821	1010	3	19	202	224
Sub-total	31	207	3220	6452	9910	35	267	4097	4399
SINGLE VEHICLE									
Hit Fixed Object	24	120	584	1500	2228	25	135	684	844
Hit Pedestrian	6	54	214	145	419	6	59	233	298
Hit Animal	2	8	29	147	186	2	8	34	44
Hit Object on Road	0	3	7	33	43	0	3	8	11
Roll Over	11	84	281	220	596	11	95	344	450
Left Road Out of Control	1	5	38	85	129	1	5	46	52
Other	0	4	20	64	88	0	4	22	26
Sub -total	44	278	1173	2194	3689	45	309	1371	1725
TOTAL	75	485	4393	8646	13599	80	576	5468	6124

Table 12: Hit Fixed Object Crashes by Object First Hit and Severity

Type of Fixed Object	Fatal Crashes	Serious Injury Crashes	Minor Injury Crashes	Property Damage Crashes	All Crashes
Tree	17	70	249	437	773
Traffic Signal Pole	0	0	11	51	62
Pole - not Stobie	0	2	36	106	144
Bridge	0	0	0	9	9
Sign Post	1	7	18	61	87
Stobie Pole	0	12	60	147	219
Other Fixed Obstruction	4	19	159	583	765
Guard Rail	2	9	44	78	133
Wire Rope barrier	0	1	7	28	36
TOTAL	24	120	584	1500	2228

Table 13: Single Vehicle Crashes by Motor Vehicle Type and Severity

Type of Vehicle	Fatal Crashes	Serious Injury Crashes	Minor Injury Crashes	Property Damage Crashes	All Crashes
Passenger Vehicle	35	197	897	1940	3069
Light Truck (≤4.5 Tonnes)	0	0	1	4	5
Heavy Vehicle	1	7	29	159	196
Buses	0	2	9	13	24
Motorcycles	6	54	163	68	291
Bicycles	2	18	74	9	103
Other	0	0	0	1	1
TOTAL	44	278	1173	2194	3689

Table 14a: Crashes and Casualties by DCA: Metropolitan Adelaide

Location Type	Crashes				Casualties				
	Fatal Crashes	Serious Injury Crashes	Minor Injury Crashes	Property Damage Crashes	ALL CRASHES	Fatalities	Serious Injuries	Minor Injuries	ALL CASUALTIES
PEDESTRIANS									
100	0	15	81	70	166	0	16	83	99
101	0	5	6	1	12	0	5	6	11
102	1	15	47	17	80	1	15	53	69
103	1	3	14	21	39	1	3	16	20
104	1	0	6	4	11	1	0	6	7
105	0	0	0	1	1	0	0	0	0
106	0	3	7	1	11	0	7	10	17
107	0	2	8	9	19	0	2	11	13
108	0	1	4	2	7	0	3	6	9
109	0	2	19	6	27	0	2	20	22
Sub-total	3	46	192	132	373	3	53	211	267
ADJ DIRECTIONS									
110	0	13	227	329	569	0	14	319	333
111	0	1	76	122	199	0	1	89	90
112	0	0	8	16	24	0	0	8	8
113	2	21	222	406	651	2	23	288	313
114	0	0	18	37	55	0	0	19	19
115	0	0	1	14	15	0	0	1	1
116	0	2	77	145	224	0	2	81	83
117	0	0	0	1	1	0	0	0	0
118	0	0	1	3	4	0	0	1	1
119	0	1	6	17	24	0	2	6	8
Sub-total	2	38	636	1090	1766	2	42	812	856
OPP DIRECTIONS									
120	2	14	67	96	179	2	22	113	137
121	3	31	373	568	975	3	35	502	540
122	0	0	0	0	0	0	0	0	0
123	0	1	7	9	17	0	1	7	8
124	0	0	0	6	6	0	0	0	0
125	0	0	0	0	0	0	0	0	0
129	0	0	1	0	1	0	0	1	1
Sub-total	5	46	448	679	1178	5	58	623	686
SAME DIRECTION									
130	0	22	1040	1680	2742	0	23	1274	1297
131	0	1	122	150	273	0	1	143	144
132	0	2	134	182	318	0	2	152	154
133	0	5	39	225	269	0	5	45	50
134	0	3	45	236	284	0	3	53	56
135	0	1	48	216	265	0	1	55	56
136	0	0	10	62	72	0	0	10	10
137	1	1	43	89	134	1	1	45	47
139	0	1	5	19	25	0	1	7	8
Sub-total	1	36	1486	2859	4382	1	37	1784	1822
MANOEUVERING									
140	0	4	71	131	206	0	5	91	96
141	0	0	1	18	19	0	0	1	1
142	0	0	12	58	70	0	0	13	13
143	0	1	7	14	22	0	1	7	8
144	0	0	2	24	26	0	0	3	3
145	0	0	3	53	56	0	0	3	3

Table 14a: Crashes and Casualties by DCA: Metropolitan Adelaide (cont.)

Location Type	Crashes					Casualties			
	Fatal Crashes	Serious Injury Crashes	Minor Injury Crashes	Property Damage Crashes	ALL CRASHES	Fatalities	Serious Injuries	Minor Injuries	ALL CASUALTIES
146	0	0	8	58	66	0	0	10	10
147	0	2	94	177	273	0	2	120	122
148	0	2	21	30	53	0	2	22	24
149	0	1	19	28	48	0	1	20	21
Subtotal	0	10	238	591	839	0	11	290	301
OVERTAKING									
150	1	3	6	7	17	1	4	8	13
151	0	2	1	4	7	0	2	1	3
152	1	3	14	27	45	1	5	16	22
153	0	0	2	9	11	0	0	2	2
154	0	0	1	8	9	0	0	1	1
159	0	1	10	37	48	0	2	13	15
Sub-total	2	9	34	92	137	2	13	41	56
ON PATH									
160	0	9	101	582	692	0	11	116	127
161	0	0	1	0	1	0	0	1	1
162	0	0	3	1	4	0	0	5	5
163	0	3	27	24	54	0	3	27	30
164	0	1	0	23	24	0	1	0	1
165	0	0	2	4	6	0	0	3	3
166	0	1	4	23	28	0	1	4	5
167	0	1	8	45	54	0	1	8	9
169	0	2	13	53	68	0	2	13	15
Sub-total	0	17	159	755	931	0	19	177	196
OFF PATH, STRAIGHT									
170	0	3	5	16	24	0	3	5	8
171	3	18	154	466	641	3	18	178	199
172	0	1	1	5	7	0	2	1	3
173	2	11	85	222	320	2	12	96	110
174	0	11	73	33	117	0	11	75	86
175	1	0	8	23	32	1	0	9	10
176	0	4	31	86	121	0	5	34	39
179	0	1	4	15	20	0	1	4	5
Sub-total	6	49	361	866	1282	6	52	402	460
OFF PATH, CURVE									
180	0	0	8	19	27	0	0	11	11
181	4	12	78	166	260	4	14	88	106
182	0	2	8	8	18	0	2	9	11
183	1	10	61	123	195	1	13	72	86
184	0	4	36	15	55	0	4	39	43
189	0	0	0	3	3	0	0	0	0
Sub-total	5	28	191	334	558	5	33	219	257
MISCELLANEOUS									
190	0	2	6	3	11	0	2	6	8
191	0	1	4	31	36	0	1	4	5
192	0	1	1	4	6	0	1	1	2
193	0	0	0	1	1	0	0	0	0
194	0	0	0	12	12	0	0	0	0
199	0	1	2	17	20	0	1	2	3
Subtotal	0	5	13	68	86	0	5	13	18
TOTAL	24	284	3758	7466	11532	24	323	4572	4919

Table 14b: Crashes and Casualties by DCA: Rural

Location Type	Crashes					Casualties			
	Fatal Crashes	Serious Injury Crashes	Minor Injury Crashes	Property Damage Crashes	ALL CRASHES	Fatalities	Serious Injuries	Minor Injuries	ALL CASUALTIES
PEDESTRIANS									
100	1	4	7	3	15	1	4	7	12
101	0	0	0	0	0	0	0	0	0
102	1	1	3	4	9	1	1	3	5
103	1	2	4	3	10	1	2	6	9
104	0	0	1	1	2	0	0	1	1
105	0	0	0	0	0	0	0	0	0
106	0	1	1	0	2	0	1	1	2
107	0	0	1	2	3	0	0	1	1
108	0	0	1	0	1	0	0	1	1
109	0	1	4	1	6	0	1	4	5
Sub-total	3	9	22	14	48	3	9	24	36
ADJ DIRECTIONS									
110	2	7	52	87	148	2	18	89	109
111	0	1	7	19	27	0	1	8	9
112	0	0	1	1	2	0	0	1	1
113	1	4	34	28	67	1	4	55	60
114	0	0	4	4	8	0	0	4	4
115	0	0	0	3	3	0	0	0	0
116	0	1	7	18	26	0	1	11	12
117	0	0	0	0	0	0	0	0	0
118	0	0	0	2	2	0	0	0	0
119	0	0	0	1	1	0	0	0	0
Sub-total	3	13	105	163	284	3	24	168	195
OPP DIRECTIONS									
120	11	14	15	23	63	13	29	41	83
121	1	6	20	29	56	1	8	38	47
122	0	0	0	0	0	0	0	0	0
123	0	0	0	2	2	0	0	0	0
124	0	0	0	0	0	0	0	0	0
125	0	0	0	0	0	0	0	0	0
129	0	0	0	0	0	0	0	0	0
Sub-total	12	20	35	54	121	14	37	79	130
SAME DIRECTION									
130	3	7	25	69	104	3	12	37	52
131	0	0	3	9	12	0	0	3	3
132	0	6	17	34	57	0	6	28	34
133	0	0	3	9	12	0	0	7	7
134	0	0	1	8	9	0	0	1	1
135	0	1	1	7	9	0	1	2	3
136	0	0	1	3	4	0	0	2	2
137	0	0	0	1	1	0	0	0	0
139	0	0	0	0	0	0	0	0	0
Sub-total	3	14	51	140	208	3	19	80	102
MANOEUVERING									
140	0	2	14	17	33	0	2	21	23
141	0	0	0	2	2	0	0	0	0
142	0	0	2	5	7	0	0	3	3
143	0	0	0	1	1	0	0	0	0
144	0	0	0	3	3	0	0	0	0
145	0	0	0	10	10	0	0	0	0

Table 14b: Crashes and Casualties by DCA: Rural (cont.)

Location Type	Crashes					Casualties			
	Fatal Crashes	Serious Injury Crashes	Minor Injury Crashes	Property Damage Crashes	ALL CRASHES	Fatalities	Serious Injuries	Minor Injuries	ALL CASUALTIES
146	0	1	0	15	16	0	1	0	1
147	0	3	9	29	41	0	3	10	13
148	0	1	2	1	4	0	1	2	3
149	0	1	3	5	9	0	1	3	4
Subtotal	0	8	30	88	126	0	8	39	47
OVERTAKING									
150	2	0	1	6	9	3	1	3	7
151	2	0	0	4	6	2	1	0	3
152	0	1	8	11	20	0	1	13	14
153	0	1	0	1	2	0	1	0	1
154	0	0	0	1	1	0	0	0	0
159	0	1	2	9	12	0	1	2	3
Sub-total	4	3	11	32	50	5	5	18	28
ON PATH									
160	0	0	13	50	63	0	0	15	15
161	0	0	0	1	1	0	0	0	0
162	1	0	0	0	1	1	1	0	2
163	0	0	1	2	3	0	0	1	1
164	0	0	0	11	11	0	0	0	0
165	0	0	0	1	1	0	0	0	0
166	0	1	0	6	7	0	1	0	1
167	2	7	21	101	131	2	7	26	35
169	0	1	4	10	15	0	1	5	6
Sub-total	3	9	39	182	233	3	10	47	60
OFF PATH, STRAIGHT									
170	2	4	17	17	40	2	6	30	38
171	3	8	46	89	146	3	9	56	68
172	0	2	8	18	28	0	3	10	13
173	7	17	35	70	129	9	21	39	69
174	2	11	43	35	91	2	11	60	73
175	0	3	6	14	23	0	3	8	11
176	1	22	48	59	130	1	24	60	85
179	0	1	1	0	2	0	1	1	2
Sub-total	15	68	204	302	589	17	78	264	359
OFF PATH, CURVE									
180	1	6	21	27	55	1	6	26	33
181	3	24	40	69	136	3	26	54	83
182	0	8	17	17	42	0	9	19	28
183	3	13	31	49	96	3	16	41	60
184	0	4	24	31	59	0	4	30	34
189	1	0	0	0	1	1	0	0	1
Sub-total	8	55	133	193	389	8	61	170	239
MISCELLANEOUS									
190	0	1	2	0	3	0	1	2	3
191	0	0	2	9	11	0	0	4	4
192	0	1	0	0	1	0	1	0	1
193	0	0	0	0	0	0	0	0	0
194	0	0	1	0	1	0	0	1	1
199	0	0	0	3	3	0	0	0	0
Subtotal	0	2	5	12	19	0	2	7	9
TOTAL	51	201	635	1180	2067	56	253	896	1205

Table 14c: Crashes and Casualties by DCA: South Australia

Location Type	Crashes					Casualties			
	Fatal Crashes	Serious Injury Crashes	Minor Injury Crashes	Property Damage Crashes	ALL CRASHES	Fatalities	Serious Injuries	Minor Injuries	ALL CASUALTIES
PEDESTRIANS									
100	1	19	88	73	181	1	20	90	111
101	0	5	6	1	12	0	5	6	11
102	2	16	50	21	89	2	16	56	74
103	2	5	18	24	49	2	5	22	29
104	1	0	7	5	13	1	0	7	8
105	0	0	0	1	1	0	0	0	0
106	0	4	8	1	13	0	8	11	19
107	0	2	9	11	22	0	2	12	14
108	0	1	5	2	8	0	3	7	10
109	0	3	23	7	33	0	3	24	27
Sub-total	6	55	214	146	421	6	62	235	303
ADJ DIRECTIONS									
110	2	20	279	416	717	2	32	408	442
111	0	2	83	141	226	0	2	97	99
112	0	0	9	17	26	0	0	9	9
113	3	25	256	434	718	3	27	343	373
114	0	0	22	41	63	0	0	23	23
115	0	0	1	17	18	0	0	1	1
116	0	3	84	163	250	0	3	92	95
117	0	0	0	1	1	0	0	0	0
118	0	0	1	5	6	0	0	1	1
119	0	1	6	18	25	0	2	6	8
Sub-total	5	51	741	1253	2050	5	66	980	1051
OPP DIRECTIONS									
120	13	28	82	119	242	15	51	154	220
121	4	37	393	597	1031	4	43	540	587
122	0	0	0	0	0	0	0	0	0
123	0	1	7	11	19	0	1	7	8
124	0	0	0	6	6	0	0	0	0
125	0	0	0	0	0	0	0	0	0
129	0	0	1	0	1	0	0	1	1
Sub-total	17	66	483	733	1299	19	95	702	816
SAME DIRECTION									
130	3	29	1065	1749	2846	3	35	1311	1349
131	0	1	125	159	285	0	1	146	147
132	0	8	151	216	375	0	8	180	188
133	0	5	42	234	281	0	5	52	57
134	0	3	46	244	293	0	3	54	57
135	0	2	49	223	274	0	2	57	59
136	0	0	11	65	76	0	0	12	12
137	1	1	43	90	135	1	1	45	47
139	0	1	5	19	25	0	1	7	8
Sub-total	4	50	1537	2999	4590	4	56	1864	1924
MANOEUVERING									
140	0	6	85	148	239	0	7	112	119
141	0	0	1	20	21	0	0	1	1
142	0	0	14	63	77	0	0	16	16
143	0	1	7	15	23	0	1	7	8
144	0	0	2	27	29	0	0	3	3
145	0	0	3	63	66	0	0	3	3

Table 14c: Crashes and Casualties by DCA: South Australia (cont.)

Location Type	Crashes					Casualties			
	Fatal Crashes	Serious Injury Crashes	Minor Injury Crashes	Property Damage Crashes	ALL CRASHES	Fatalities	Serious Injuries	Minor Injuries	ALL CASUALTIES
146	0	1	8	73	82	0	1	10	11
147	0	5	103	206	314	0	5	130	135
148	0	3	23	31	57	0	3	24	27
149	0	2	22	33	57	0	2	23	25
Subtotal	0	18	268	679	965	0	19	329	348
OVERTAKING									
150	3	3	7	13	26	4	5	11	20
151	2	2	1	8	13	2	3	1	6
152	1	4	22	38	65	1	6	29	36
153	0	1	2	10	13	0	1	2	3
154	0	0	1	9	10	0	0	1	1
159	0	2	12	46	60	0	3	15	18
Sub-total	6	12	45	124	187	7	18	59	84
ON PATH									
160	0	9	114	632	755	0	11	131	142
161	0	0	1	1	2	0	0	1	1
162	1	0	3	1	5	1	1	5	7
163	0	3	28	26	57	0	3	28	31
164	0	1	0	34	35	0	1	0	1
165	0	0	2	5	7	0	0	3	3
166	0	2	4	29	35	0	2	4	6
167	2	8	29	146	185	2	8	34	44
169	0	3	17	63	83	0	3	18	21
Sub-total	3	26	198	937	1164	3	29	224	256
OFF PATH, STRAIGHT									
170	2	7	22	33	64	2	9	35	46
171	6	26	200	555	787	6	27	234	267
172	0	3	9	23	35	0	5	11	16
173	9	28	120	292	449	11	33	135	179
174	2	22	116	68	208	2	22	135	159
175	1	3	14	37	55	1	3	17	21
176	1	26	79	145	251	1	29	94	124
179	0	2	5	15	22	0	2	5	7
Sub-total	21	117	565	1168	1871	23	130	666	819
OFF PATH, CURVE									
180	1	6	29	46	82	1	6	37	44
181	7	36	118	235	396	7	40	142	189
182	0	10	25	25	60	0	11	28	39
183	4	23	92	172	291	4	29	113	146
184	0	8	60	46	114	0	8	69	77
189	1	0	0	3	4	1	0	0	1
Sub-total	13	83	324	527	947	13	94	389	496
MISCELLANEOUS									
190	0	3	8	3	14	0	3	8	11
191	0	1	6	40	47	0	1	8	9
192	0	2	1	4	7	0	2	1	3
193	0	0	0	1	1	0	0	0	0
194	0	0	1	12	13	0	0	1	1
199	0	1	2	20	23	0	1	2	3
Subtotal	0	7	18	80	105	0	7	20	27
TOTAL	75	485	4393	8646	13599	80	576	5468	6124

Table 15a: Crashes and Casualties by Location Type and Severity:
Metropolitan Adelaide

Location Type	Crashes					Casualties			
	Fatal Crashes	Serious Injury Crashes	Minor Injury Crashes	Property Damage Crashes	ALL CRASHES	Fatalities	Serious Injuries	Minor Injuries	ALL CASUALTIES
INTERSECTION									
Interchange	0	0	7	13	20	0	0	7	7
Cross Road	1	47	942	1503	2493	1	50	1190	1241
Y-Junction	0	0	2	5	7	0	0	2	2
T-Junction	5	72	959	1798	2834	5	78	1149	1232
Multiple	1	0	32	49	82	1	1	37	39
Rail Crossing	0	0	3	4	7	0	0	5	5
Sub-total	7	119	1945	3372	5443	7	129	2390	2526
MID BLOCK									
Crossover	0	0	0	2	2	0	0	0	0
Rail Crossing	0	1	7	11	19	0	1	8	9
Divided Road	5	42	802	1695	2544	5	46	955	1006
Not Divided	12	108	898	2184	3202	12	128	1092	1232
One Way	0	1	7	14	22	0	4	10	14
Freeway	0	9	52	138	199	0	11	61	72
Ramp On	0	0	6	5	11	0	0	7	7
Ramp Off	0	0	4	6	10	0	0	5	5
Pedestrian Crossing	0	3	33	38	74	0	3	40	43
Other Midblock	0	1	4	1	6	0	1	4	5
Sub-total	17	165	1813	4094	6089	17	194	2182	2393
TOTAL	24	284	3758	7466	11532	24	323	4572	4919

Table 15b: Crashes and Casualties by Location Type and Severity:
Rural

Location Type	Crashes					Casualties			
	Fatal Crashes	Serious Injury Crashes	Minor Injury Crashes	Property Damage Crashes	ALL CRASHES	Fatalities	Serious Injuries	Minor Injuries	ALL CASUALTIES
INTERSECTION									
Interchange	0	0	1	0	1	0	0	1	1
Cross Road	4	12	102	181	299	5	23	157	185
T-Junction	4	22	104	169	299	4	25	158	187
Multiple	0	1	2	5	8	0	1	2	3
Sub-total	8	35	209	355	607	9	49	318	376
MID BLOCK									
Rail Crossing	0	1	1	2	4	0	1	1	2
Divided Road	2	6	25	54	87	2	7	31	40
Not Divided	40	157	398	756	1351	44	193	544	781
One Way	0	0	0	2	2	0	0	0	0
Freeway	0	1	1	5	7	0	2	1	3
Pedestrian Crossing	0	0	0	4	4	0	0	0	0
Other Midblock	1	1	1	2	5	1	1	1	3
Sub-total	43	166	426	825	1460	47	204	578	829
TOTAL	51	201	635	1180	2067	56	253	896	1205

Table 15c: Crashes and Casualties by Location Type and Severity:
South Australia

Location Type	Crashes				Casualties				
	Fatal Crashes	Serious Injury Crashes	Minor Injury Crashes	Property Damage Crashes	ALL CRASHES	Fatalities	Serious Injuries	Minor Injuries	ALL CASUALTIES
INTERSECTION									
Interchange	0	0	8	13	21	0	0	8	8
Cross Road	5	59	1044	1684	2792	6	73	1347	1426
Y- Junction	0	0	2	5	7	0	0	2	2
T-Junction	9	94	1063	1967	3133	9	103	1307	1419
Multiple	1	1	34	54	90	1	2	39	42
Rail Crossing	0	0	3	4	7	0	0	5	5
Sub-total	15	154	2154	3727	6050	16	178	2708	2902
MID BLOCK									
Crossover	0	0	0	2	2	0	0	0	0
Rail Crossing	0	2	8	13	23	0	2	9	11
Divided Road	7	48	827	1749	2631	7	53	986	1046
Not Divided	52	265	1296	2940	4553	56	321	1636	2013
One Way	0	1	7	16	24	0	4	10	14
Freeway	0	10	53	143	206	0	13	62	75
Ramp On	0	0	6	5	11	0	0	7	7
Ramp Off	0	0	4	6	10	0	0	5	5
Pedestrian Crossing	0	3	33	42	78	0	3	40	43
Other	1	2	5	3	11	1	2	5	8
Sub-total	60	331	2239	4919	7549	64	398	2760	3222
TOTAL	75	485	4393	8646	13599	80	576	5468	6124

Table 16a: Crashes and Casualties by Traffic Control and Severity:
Metropolitan Adelaide

Traffic Control	Crashes				Casualties				
	Fatal Crashes	Serious Injury Crashes	Minor Injury Crashes	Property Damage Crashes	ALL CRASHES	Fatalities	Serious Injuries	Minor Injuries	ALL CASUALTIES
INTERSECTION									
Traffic Signals	2	38	820	1382	2242	2	42	1029	1073
Give Way Sign	2	26	242	421	691	2	29	318	349
Stop Sign	1	11	164	255	431	1	12	212	225
Roundabout	0	9	168	274	451	0	9	191	200
No Control	2	35	551	1040	1628	2	37	640	679
Sub-total	7	119	1945	3372	5443	7	129	2390	2526
MID BLOCK									
Traffic Signals	0	3	23	30	56	0	3	30	33
Give Way Sign	0	0	0	3	3	0	0	0	0
Stop Sign	0	1	0	0	1	0	1	0	1
No Control	17	161	1782	4052	6012	17	190	2143	2350
Rail Xing-Boom	0	0	4	6	10	0	0	5	5
Rail Xing-Traffic Signals	0	0	3	2	5	0	0	3	3
Other	0	0	1	1	2	0	0	1	1
Sub-total	17	165	1813	4094	6089	17	194	2182	2393
TOTAL	24	284	3758	7466	11532	24	323	4572	4919

Table 16b: Crashes and Casualties by Traffic Control and Severity:
Rural

Traffic Control	Crashes					Casualties			
	Fatal Crashes	Serious Injury Crashes	Minor Injury Crashes	Property Damage Crashes	ALL CRASHES	Fatalities	Serious Injuries	Minor Injuries	ALL CASUALTIES
INTERSECTION									
Traffic Signals	0	2	15	24	41	0	2	18	20
Give Way Sign	5	17	80	135	237	6	27	127	160
Stop Sign	1	3	25	36	65	1	6	43	50
Roundabout	0	0	14	30	44	0	0	16	16
No Control	2	13	75	130	220	2	14	114	130
Sub-total	8	35	209	355	607	9	49	318	376
MID BLOCK									
Traffic Signals	0	0	0	3	3	0	0	0	0
Give Way Sign	0	1	0	0	1	0	1	0	1
Stop Sign	0	0	0	1	1	0	0	0	0
No Control	43	165	425	818	1451	47	203	577	827
Rail Xing-Boom	0	0	0	1	1	0	0	0	0
Rail Xing-Flashing	0	0	1	1	2	0	0	1	1
Other	0	0	0	1	1	0	0	0	0
Sub-total	43	166	426	825	1460	47	204	578	829
TOTAL	51	201	635	1180	2067	56	253	896	1205

Table 16c: Crashes and Casualties by Traffic Control and Severity:
South Australia

Traffic Control	Crashes					Casualties			
	Fatal Crashes	Serious Injury Crashes	Minor Injury Crashes	Property Damage Crashes	ALL CRASHES	Fatalities	Serious Injuries	Minor Injuries	ALL CASUALTIES
INTERSECTION									
Traffic Signals	2	40	835	1406	2283	2	44	1047	1093
Give Way Sign	7	43	322	556	928	8	56	445	509
Stop Sign	2	14	189	291	496	2	18	255	275
Roundabout	0	9	182	304	495	0	9	207	216
No Control	4	48	626	1170	1848	4	51	754	809
Sub-total	15	154	2154	3727	6050	16	178	2708	2902
MID BLOCK									
Traffic Signals	0	3	23	33	59	0	3	30	33
Give Way Sign	0	1	0	3	4	0	1	0	1
Stop Sign	0	1	0	1	2	0	1	0	1
No Control	60	326	2207	4870	7463	64	393	2720	3177
Rail Xing-Boom	0	0	4	7	11	0	0	5	5
Rail Xing-Flashing	0	0	1	1	2	0	0	1	1
Rail Xing-Traffic Signals	0	0	3	2	5	0	0	3	3
Other	0	0	1	2	3	0	0	1	1
Sub-total	60	331	2239	4919	7549	64	398	2760	3222
TOTAL	75	485	4393	8646	13599	80	576	5468	6124

Table 17: Crashes and Casualties by Area Speed Limit, Region & Severity

Area Speed Limit	Crashes					Casualties			
	Fatal Crashes	Serious Injury Crashes	Minor Injury Crashes	Property Damage Crashes	ALL CRASHES	Fatalities	Serious Injuries	Minor Injuries	ALL CASUALTIES
METROPOLITAN									
<50km/h	2	9	71	190	272	2	14	76	92
50km/h	3	77	912	2088	3080	3	85	1041	1129
60km/h	10	130	2104	3923	6167	10	144	2591	2745
70km/h	3	9	117	261	390	3	11	143	157
80km/h	3	36	380	607	1026	3	39	504	546
90km/h	0	6	75	206	287	0	6	94	100
100km/h	3	10	65	113	191	3	13	78	94
110km/h	0	7	34	78	119	0	11	45	56
Sub-total	24	284	3758	7466	11532	24	323	4572	4919
RURAL									
<50km/h	1	4	6	18	29	1	4	6	11
50km/h	2	30	151	327	510	2	32	186	220
60km/h	3	7	68	164	242	3	8	89	100
70km/h	0	0	1	1	2	0	0	2	2
80km/h	1	7	67	95	170	1	9	88	98
90km/h	1	1	10	11	23	1	1	16	18
100km/h	19	77	193	316	605	20	100	292	412
110km/h	24	75	139	248	486	28	99	217	344
Sub-total	51	201	635	1180	2067	56	253	896	1205
TOTAL	75	485	4393	8646	13599	80	576	5468	6124

Table 18: Crashes and Casualties by Light Conditions, Region & Severity

Light Conditions[1] & Region	Crashes					Casualties			
	Fatal Crashes	Serious Injury Crashes	Minor Injury Crashes	Property Damage Crashes	ALL CRASHES	Fatalities	Serious Injuries	Minor Injuries	ALL CASUALTIES
METROPOLITAN									
Daylight	14	196	3040	5709	8959	14	221	3666	3901
Night	10	88	718	1757	2573	10	102	906	1018
Sub-total	24	284	3758	7466	11532	24	323	4572	4919
RURAL									
Daylight	37	143	480	845	1505	41	183	687	911
Night	14	58	155	335	562	15	70	209	294
Sub-total	51	201	635	1180	2067	56	253	896	1205
TOTAL	75	485	4393	8646	13599	80	576	5468	6124

Table 19: Crashes and Casualties by Vertical Alignment, Region & Severity

Vertical Alignment & Region	Crashes					Casualties			
	Fatal Crashes	Serious Injury Crashes	Minor Injury Crashes	Property Damage Crashes	ALL CRASHES	Fatalities	Serious Injuries	Minor Injuries	ALL CASUALTIES
METROPOLITAN									
Level	14	228	3209	6477	9928	14	259	3887	4160
Crest of Hill	1	7	55	92	155	1	9	76	86
Bottom of Hill	0	5	21	58	84	0	5	28	33
Slope	9	44	470	817	1340	9	50	578	637
Unknown	0	0	3	22	25	0	0	3	3
Sub-total	24	284	3758	7466	11532	24	323	4572	4919
RURAL									
Level	36	153	514	926	1629	38	192	715	945
Crest of Hill	4	10	19	36	69	5	12	29	46
Bottom of Hill	2	6	14	23	45	2	9	16	27
Slope	9	31	87	186	313	11	39	133	183
Unknown	0	1	1	9	11	0	1	3	4
Sub-total	51	201	635	1180	2067	56	253	896	1205
TOTAL	75	485	4393	8646	13599	80	576	5468	6124

Table 20: Crashes and Casualties by Horizontal Alignment, Region & Severity

Horizontal Alignment & Region	Crashes					Casualties			
	Fatal Crashes	Serious Injury Crashes	Minor Injury Crashes	Property Damage Crashes	ALL CRASHES	Fatalities	Serious Injuries	Minor Injuries	ALL CASUALTIES
METROPOLITAN									
Straight	16	227	3353	6719	10315	16	258	4091	4365
Curved, View Obscured	4	19	124	211	358	4	21	150	175
Curved, View Open	4	38	280	533	855	4	44	330	378
Unknown	0	0	1	3	4	0	0	1	1
Sub-total	24	284	3758	7466	11532	24	323	4572	4919
RURAL									
Straight	37	128	459	890	1514	41	166	642	849
Curved, View Obscured	3	26	49	85	163	3	31	75	109
Curved, View Open	11	47	126	202	386	12	56	178	246
Unknown	0	0	1	3	4	0	0	1	1
Sub-total	51	201	635	1180	2067	56	253	896	1205
TOTAL	75	485	4393	8646	13599	80	576	5468	6124

Table 21: Crashes and Casualties by Road Moisture, Region & Severity

Road Moisture & Region	Crashes				Casualties				
	Fatal Crashes	Serious Injury Crashes	Minor Injury Crashes	Property Damage Crashes	ALL CRASHES	Fatalities	Serious Injuries	Minor Injuries	ALL CASUALTIES
METROPOLITAN									
Dry	22	252	3339	6457	10070	22	288	4058	4368
Wet	2	31	415	992	1440	2	34	510	546
Unknown	0	1	4	17	22	0	1	4	5
Sub-total	24	284	3758	7466	11532	24	323	4572	4919
RURAL									
Dry	48	171	562	1034	1815	53	215	807	1075
Wet	3	29	68	140	240	3	37	84	124
Unknown	0	1	5	6	12	0	1	5	6
Sub-total	51	201	635	1180	2067	56	253	896	1205
TOTAL	75	485	4393	8646	13599	80	576	5468	6124

Table 22: Crashes and Casualties by Route and Severity

Route	Crashes				Casualties				
	Fatal Crashes	Serious Injury Crashes	Minor Injury Crashes	Property Damage Crashes	ALL CRASHES	Fatalities	Serious Injuries	Minor Injuries	ALL CASUALTIES
Anzac Highway	0	2	47	80	129	0	2	52	54
Barrier Highway	0	4	4	19	27	0	4	6	10
Cudlee Creek - Lobethal Rd	0	0	3	9	12	0	0	4	4
Dukes Highway	1	3	11	22	37	1	3	16	20
Eyre Highway	1	4	14	20	39	1	4	25	30
Gorge Rd	0	1	28	38	67	0	1	32	33
Lincoln Highway	0	1	4	11	16	0	1	4	5
Lyndoch - Chain of Ponds Rd	1	1	8	8	18	1	1	13	15
Lower North East Road	0	1	5	5	11	0	1	5	6
Horrocks Highway	1	4	10	19	34	1	6	13	20
Main North Rd (M) ¹	0	8	206	370	584	0	8	265	273
North East Road	1	5	101	186	293	1	7	121	129
Main South Road	0	4	13	32	49	0	4	23	27
Port Wakefield Road	5	10	23	63	101	8	16	38	62
Princes Highway	2	6	23	32	63	2	7	31	40
Riddoch Highway	5	6	7	15	33	5	8	10	23
South Eastern Freeway ²	1	8	30	80	119	1	11	39	51
Southern Expressway	0	3	27	47	77	0	3	30	33
Stuart Highway	3	5	6	18	32	3	8	12	23
Sturt Highway	4	7	17	46	74	5	14	27	46
Tea Tree Gully - Mannum Rd	1	2	28	34	65	1	2	36	39
Victor Harbor Road	2	3	16	34	55	2	5	22	29

M = Metropolitan Adelaide

¹ From Fitzroy Terrace to Gawler Bypass.

² Does not include the intersection with Cross Road

Table 23a: Crashes and Casualties by Local Government Area & Severity, Metropolitan Adelaide: Council Roads

Local Government Area	Crashes					Casualties			
	Fatal Crashes	Serious Injury Crashes	Minor Injury Crashes	Property Damage Crashes	ALL CRASHES	Fatalities	Serious Injuries	Minor Injuries	ALL CASUALTIES
City of Adelaide	0	14	151	332	497	0	16	180	196
Adelaide Hills Council	0	8	41	64	113	0	9	42	51
Adelaide Plains Council	0	2	5	6	13	0	2	7	9
The Barossa Council	1	1	2	1	5	1	2	3	6
City of Burnside	0	1	26	50	77	0	1	29	30
Campbelltown City Council	0	5	19	50	74	0	5	21	26
City of Charles Sturt	1	6	53	159	219	1	7	57	65
Town of Gawler	0	2	17	31	50	0	2	21	23
City of Holdfast Bay	0	1	43	87	131	0	1	43	44
Light Regional Council	0	0	4	6	10	0	0	4	4
City of Marion	0	8	53	137	198	0	8	58	66
City of Mitcham	0	2	38	83	123	0	2	41	43
Mount Barker District Council	0	1	33	51	85	0	1	39	40
City of Norwood Payneham & St Peters	0	1	26	80	107	0	1	26	27
City of Onkaparinga	0	12	115	274	401	0	13	143	156
City of Playford	0	12	125	224	361	0	13	168	181
City of Prospect	0	1	11	29	41	0	1	12	13
City of Port Adelaide Enfield	1	13	76	187	277	1	15	81	97
City of Salisbury	1	9	100	231	341	1	12	123	136
City of Tea Tree Gully	0	3	35	99	137	0	3	47	50
City of Unley	0	0	27	74	101	0	0	29	29
Town of Walkerville	0	1	4	12	17	0	1	4	5
City of West Torrens	1	4	32	97	134	1	5	36	42
Total	5	107	1036	2364	3512	5	120	1214	1339

Table 23b: Crashes and Casualties by Local Government Area & Severity, Metropolitan Adelaide: DPTI Roads

Local Government Area	Crashes				Casualties				
	Fatal Crashes	Serious Injury Crashes	Minor Injury Crashes	Property Damage Crashes	ALL CRASHES	Fatalities	Serious Injuries	Minor Injuries	ALL CASUALTIES
City of Adelaide	2	4	57	118	181	2	4	70	76
Adelaide Hills Council	3	11	119	192	325	3	11	157	171
Adelaide Plains Council	0	2	4	9	15	0	2	4	6
The Barossa Council	0	0	3	1	4	0	0	4	4
City of Burnside	1	1	80	160	242	1	1	97	99
Campbelltown City Council	0	8	72	139	219	0	8	85	93
City of Charles Sturt	1	17	244	450	712	1	18	292	311
Town of Gawler	0	0	26	59	85	0	0	41	41
City of Holdfast Bay	0	1	52	119	172	0	1	64	65
Light Regional Council	1	1	12	17	31	1	3	18	22
City of Marion	1	17	201	329	548	1	20	247	268
City of Mitcham	0	8	156	314	478	0	9	185	194
Mount Barker District Council	0	12	62	109	183	0	15	80	95
City of Norwood Payneham & St Peters	0	12	153	303	468	0	12	185	197
City of Onkaparinga	3	13	168	299	483	3	15	217	235
City of Playford	3	10	150	227	390	3	13	213	229
City of Prospect	0	1	97	150	248	0	1	119	120
City of Port Adelaide Enfield	0	22	326	696	1044	0	26	377	403
City of Salisbury	3	12	325	596	936	3	14	410	427
City of Tea Tree Gully	1	8	114	193	316	1	9	130	140
City of Unley	0	2	83	156	241	0	2	98	100
Town of Walkerville	0	3	40	98	141	0	3	48	51
City of West Torrens	0	12	178	366	556	0	16	217	233
Total	19	177	2722	5100	8018	19	203	3358	3580

Table 23c: Crashes and Casualties by Local Government Area & Severity, Metropolitan Adelaide: All Roads

Local Government Area	Crashes					Casualties			
	Fatal Crashes	Serious Injury Crashes	Minor Injury Crashes	Property Damage Crashes	ALL CRASHES	Fatalities	Serious Injuries	Minor Injuries	ALL CASUALTIES
City of Adelaide	2	18	208	450	678	2	20	250	272
Adelaide Hills Council	3	19	160	256	438	3	20	199	222
Adelaide Plains Council	0	4	9	15	28	0	4	11	15
The Barossa Council	1	1	5	2	9	1	2	7	10
City of Burnside	1	2	106	210	319	1	2	126	129
Campbelltown City Council	0	13	91	189	293	0	13	106	119
City of Charles Sturt	2	23	297	609	931	2	25	349	376
Town of Gawler	0	2	43	90	135	0	2	62	64
City of Holdfast Bay	0	2	95	206	303	0	2	107	109
Light Regional Council	1	1	16	23	41	1	3	22	26
City of Marion	1	25	254	466	746	1	28	305	334
City of Mitcham	0	10	194	397	601	0	11	226	237
Mount Barker District Council	0	13	95	160	268	0	16	119	135
City of Norwood Payneham & St Peters	0	13	179	383	575	0	13	211	224
City of Onkaparinga	3	25	283	573	884	3	28	360	391
City of Playford	3	22	275	451	751	3	26	381	410
City of Prospect	0	2	108	179	289	0	2	131	133
City of Port Adelaide Enfield	1	35	402	883	1321	1	41	458	500
City of Salisbury	4	21	425	827	1277	4	26	533	563
City of Tea Tree Gully	1	11	149	292	453	1	12	177	190
City of Unley	0	2	110	230	342	0	2	127	129
Town of Walkerville	0	4	44	110	158	0	4	52	56
City of West Torrens	1	16	210	463	690	1	21	253	275
Total	24	284	3758	7464	11530	24	323	4572	4919

Table 24a: Crashes and Casualties by Local Government Area & Severity, Rural: Council Roads

Local Government Area	Crashes					Casualties			
	Fatal Crashes	Serious Injury Crashes	Minor Injury Crashes	Property Damage Crashes	ALL CRASHES	Fatalities	Serious Injuries	Minor Injuries	ALL CASUALTIES
Adelaide Plains Council	0	3	7	3	13	0	4	7	11
Alexandrina Council	1	3	12	31	47	1	3	16	20
Anangu Pitjantjatjara Yankunytjatjara	0	2	6	5	13	0	2	12	14
The Barossa Council	1	4	22	26	53	1	4	29	34
Barunga West Council	0	1	0	3	4	0	1	0	1
Berri Barmera Council	0	1	5	16	22	0	1	5	6
District Council of Ceduna	0	0	1	2	3	0	0	1	1
Clare and Gilbert Valleys Council	0	1	1	9	11	0	1	1	2
District Council of Cleve	0	1	3	1	5	0	1	3	4
District Council of Coober Pedy	0	1	1	0	2	0	1	3	4
Coorong District Council	0	2	3	11	16	0	2	3	5
Copper Coast Council	0	1	10	21	32	0	1	19	20
District Council of Elliston	0	0	0	1	1	0	0	0	0
The Flinders Ranges Council	0	1	0	1	2	0	1	0	1
District Council of Franklin Harbour	0	0	1	1	2	0	0	1	1
Regional Council of Goyder	0	4	3	7	14	0	4	6	10
District Council of Grant	0	3	5	7	15	0	5	7	12
Kangaroo Island Council	2	3	8	9	22	2	7	14	23
District Council of Karoonda East Murray	0	0	1	1	2	0	0	1	1
District Council of Kimba	0	0	0	1	1	0	0	0	0
Kingston District Council	0	0	3	1	4	0	0	3	3
Light Regional Council	2	4	9	17	32	2	4	19	25
District Council of Lower Eyre Peninsula	0	1	2	6	9	0	1	4	5
District Council of Loxton Waikerie	0	2	6	12	20	0	2	6	8
Mid Murray Council	0	1	9	17	27	0	1	10	11
Sub-total	6	39	118	209	372	6	46	170	222

Table 24a: Crashes and Casualties by Local Government Area & Severity, Rural: Council Roads (cont.)

Local Government Area	Crashes					Casualties			
	Fatal Crashes	Serious Injury Crashes	Minor Injury Crashes	Property Damage Crashes	ALL CRASHES	Fatalities	Serious Injuries	Minor Injuries	ALL CASUALTIES
City of Mount Gambier	0	1	23	36	60	0	1	27	28
District Council of Mount Remarkable	0	0	2	3	5	0	0	3	3
Rural City of Murray Bridge	1	1	18	31	51	1	3	21	25
Naracoorte Lucindale Council	0	2	4	8	14	0	2	4	6
Northern Areas Council	0	3	1	3	7	0	6	3	9
District Council of Orreroo Carrieton	0	0	0	1	1	0	0	0	0
Pastoral Unincorporated	0	1	1	0	2	0	1	1	2
District Council of Peterborough	0	0	2	1	3	0	0	3	3
Port Augusta City Council	0	0	5	16	21	0	0	5	5
City of Port Lincoln	0	1	11	15	27	0	2	16	18
Port Pirie Regional Council	0	3	7	25	35	0	3	9	12
Renmark Paringa Council	0	1	5	14	20	0	1	7	8
District Council of Robe	0	0	0	1	1	0	0	0	0
Municipal Council of Roxby Downs	0	1	2	3	6	0	2	3	5
Southern Mallee District Council	0	1	0	0	1	0	1	0	1
District Council of Streaky Bay	0	0	1	5	6	0	0	1	1
Tatiara District Council	1	0	2	7	10	1	0	5	6
District Council of Tumby Bay	0	0	0	1	1	0	0	0	0
City of Victor Harbor	0	2	7	20	29	0	3	11	14
Wakefield Regional Council	1	1	3	6	11	1	1	4	6
Wattle Range Council	2	1	2	8	13	2	1	2	5
City of Whyalla	1	2	10	28	41	1	2	12	15
Wudinna District Council	0	1	0	1	2	0	1	0	1
District Council of Yankalilla	0	1	5	8	14	0	3	8	11
Yorke Peninsula Council	0	5	11	14	30	0	6	12	18
Sub-total	6	28	122	255	411	6	39	157	202
TOTAL	12	67	240	464	783	12	85	327	424

Table 24b: Crashes and Casualties by Local Government Area & Severity, Rural: DPTI Roads

Local Government Area	Crashes					Casualties			
	Fatal Crashes	Serious Injury Crashes	Minor Injury Crashes	Property Damage Crashes	ALL CRASHES	Fatalities	Serious Injuries	Minor Injuries	ALL CASUALTIES
Adelaide Plains Council	0	1	12	13	26	0	1	19	20
Alexandrina Council	4	9	35	50	98	5	12	52	69
Anangu Pitjantjatjara Yankunytjatjara	0	0	0	0	0	0	0	0	0
The Barossa Council	0	10	29	50	89	0	11	41	52
Barunga West Council	0	1	2	4	7	0	1	3	4
Berri Barmera Council	0	2	7	14	23	0	2	10	12
District Council of Ceduna	0	0	1	7	8	0	0	1	1
Clare and Gilbert Valleys Council	1	2	7	20	30	1	2	10	13
District Council of Cleve	0	0	1	1	2	0	0	1	1
District Council of Coober Pedy	0	0	2	0	2	0	0	3	3
Coorong District Council	2	4	22	29	57	2	5	29	36
Copper Coast Council	0	1	9	15	25	0	1	10	11
District Council of Elliston	0	1	0	2	3	0	1	0	1
The Flinders Ranges Council	1	1	3	4	9	1	1	3	5
District Council of Franklin Harbour	0	1	0	3	4	0	1	0	1
Regional Council of Goyder	1	5	3	13	22	1	5	5	11
District Council of Grant	2	4	10	12	28	2	8	16	26
Kangaroo Island Council	0	2	9	5	16	0	2	13	15
District Council of Karoonda East Murray	0	1	3	4	8	0	1	4	5
District Council of Kimba	0	1	1	4	6	0	1	1	2
Kingston District Council	0	1	3	6	10	0	1	3	4
Light Regional Council	1	8	18	31	58	1	11	30	42
District Council of Lower Eyre Peninsula	0	1	7	4	12	0	1	9	10
District Council of Loxton Waikerie	3	6	3	30	42	4	12	6	22
Mid Murray Council	0	3	17	28	48	0	3	19	22
Sub-total	15	65	204	349	633	17	83	288	388

Table 24b: Crashes and Casualties by Local Government Area & Severity, Rural: DPTI Roads (cont.)

Local Government Area	Crashes				Casualties				
	Fatal Crashes	Serious Injury Crashes	Minor Injury Crashes	Property Damage Crashes	ALL CRASHES	Fatalities	Serious Injuries	Minor Injuries	ALL CASUALTIES
City of Mount Gambier	0	3	18	32	53	0	3	24	27
District Council of Mount Remarkable	2	2	4	7	15	2	4	11	17
Rural City of Murray Bridge	0	3	20	46	69	0	4	25	29
Naracoorte Lucindale Council	5	2	4	11	22	5	3	5	13
Northern Areas Council	0	3	5	6	14	0	3	8	11
District Council of Orreroo Carrieton	0	0	2	2	4	0	0	4	4
Pastoral Unincorporated	5	16	29	46	96	5	20	53	78
District Council of Peterborough	0	1	1	2	4	0	1	1	2
Port Augusta City Council	2	2	5	21	30	3	2	6	11
City of Port Lincoln	0	1	5	12	18	0	1	6	7
Port Pirie Regional Council	1	2	8	22	33	1	2	8	11
Renmark Paringa Council	0	0	8	14	22	0	0	9	9
District Council of Robe	0	0	3	2	5	0	0	3	3
Municipal Council of Roxby Downs	0	0	0	3	3	0	0	0	0
Southern Mallee District Council	0	3	7	6	16	0	3	14	17
District Council of Streaky Bay	0	0	3	1	4	0	0	3	3
Tatiara District Council	2	3	8	13	26	2	3	11	16
District Council of Tumby Bay	0	0	1	0	1	0	0	1	1
City of Victor Harbor	1	1	14	21	37	1	1	19	21
Wakefield Regional Council	3	8	11	28	50	5	11	22	38
Wattle Range Council	1	9	10	20	40	1	10	15	26
City of Whyalla	1	0	5	9	15	1	0	5	6
Wudinna District Council	0	1	2	1	4	0	1	4	5
District Council of Yankalilla	1	3	12	18	34	1	5	17	23
Yorke Peninsula Council	0	6	6	24	36	0	8	7	15
Sub-total	24	69	191	367	651	27	85	281	393
TOTAL	39	134	395	716	1284	44	168	569	781

Table 24c: Crashes and Casualties by Local Government Area & Severity, Rural: All Roads

Local Government Area	Crashes					Casualties			
	Fatal Crashes	Serious Injury Crashes	Minor Injury Crashes	Property Damage Crashes	ALL CRASHES	Fatalities	Serious Injuries	Minor Injuries	ALL CASUALTIES
Adelaide Plains Council	0	4	19	16	39	0	5	26	31
Alexandrina Council	5	12	47	81	145	6	15	68	89
Anangu Pitjantjatjara Yankunytjatjara	0	2	6	5	13	0	2	12	14
The Barossa Council	1	14	51	76	142	1	15	70	86
Barunga West Council	0	2	2	7	11	0	2	3	5
Berri Barmera Council	0	3	12	30	45	0	3	15	18
District Council of Ceduna	0	0	2	9	11	0	0	2	2
Clare and Gilbert Valleys Council	1	3	8	29	41	1	3	11	15
District Council of Cleve	0	1	4	2	7	0	1	4	5
District Council of Coober Pedy	0	1	3	0	4	0	1	6	7
Coorong District Council	2	6	25	40	73	2	7	32	41
Copper Coast Council	0	2	19	36	57	0	2	29	31
District Council of Elliston	0	1	0	3	4	0	1	0	1
The Flinders Ranges Council	1	2	3	5	11	1	2	3	6
District Council of Franklin Harbour	0	1	1	4	6	0	1	1	2
Regional Council of Goyder	1	9	6	20	36	1	9	11	21
District Council of Grant	2	7	15	19	43	2	13	23	38
Kangaroo Island Council	2	5	17	14	38	2	9	27	38
District Council of Karoonda East Murray	0	1	4	5	10	0	1	5	6
District Council of Kimba	0	1	1	5	7	0	1	1	2
Kingston District Council	0	1	6	7	14	0	1	6	7
Light Regional Council	3	12	27	48	90	3	15	49	67
District Council of Lower Eyre Peninsula	0	2	9	10	21	0	2	13	15
District Council of Loxton Waikerie	3	8	9	42	62	4	14	12	30
Mid Murray Council	0	4	26	45	75	0	4	29	33
Sub-total	21	104	322	558	1005	23	129	458	610

Table 24c: Crashes and Casualties by Local Government Area & Severity, Rural: All Roads (cont.)

Local Government Area	Crashes				Casualties				
	Fatal Crashes	Serious Injury Crashes	Minor Injury Crashes	Property Damage Crashes	ALL CRASHES	Fatalities	Serious Injuries	Minor Injuries	ALL CASUALTIES
City of Mount Gambier	0	4	41	68	113	0	4	51	55
District Council of Mount Remarkable	2	2	6	10	20	2	4	14	20
Rural City of Murray Bridge	1	4	38	77	120	1	7	46	54
Naracoorte Lucindale Council	5	4	8	19	36	5	5	9	19
Northern Areas Council	0	6	6	9	21	0	9	11	20
District Council of Orroroo Carrieton	0	0	2	3	5	0	0	4	4
Pastoral Unincorporated	5	17	30	46	98	5	21	54	80
District Council of Peterborough	0	1	3	3	7	0	1	4	5
Port Augusta City Council	2	2	10	37	51	3	2	11	16
City of Port Lincoln	0	2	16	27	45	0	3	22	25
Port Pirie Regional Council	1	5	15	47	68	1	5	17	23
Renmark Paringa Council	0	1	13	28	42	0	1	16	17
District Council of Robe	0	0	3	3	6	0	0	3	3
Municipal Council of Roxby Downs	0	1	2	6	9	0	2	3	5
Southern Mallee District Council	0	4	7	6	17	0	4	14	18
District Council of Streaky Bay	0	0	4	6	10	0	0	4	4
Tatiara District Council	3	3	10	20	36	3	3	16	22
District Council of Tumby Bay	0	0	1	1	2	0	0	1	1
City of Victor Harbor	1	3	21	41	66	1	4	30	35
Wakefield Regional Council	4	9	14	34	61	6	12	26	44
Wattle Range Council	3	10	12	28	53	3	11	17	31
City of Whyalla	2	2	15	37	56	2	2	17	21
Wudinna District Council	0	2	2	2	6	0	2	4	6
District Council of Yankalilla	1	4	17	26	48	1	8	25	34
Yorke Peninsula Council	0	11	17	38	66	0	14	19	33
Sub-total	30	97	313	622	1062	33	124	438	595
TOTAL	51	201	635	1180	2067	56	253	896	1205

Table 25: Top Intersections with highest number of Casualty Crashes 2018

Intersection	Current Year	Previous Years			
	2018	2017	2016	2015	2014
Sturt Road - Marion Road	11	8	6	5	5
Fullarton Road - Dequetteville Terrace	11	8	8	13	10
Main North Road - Philip Highway	9	4	7	7	5
Fairfield Road - Main North Road	8	5	2	4	4
Main North Road - Grand Junction Road	8	6	3	4	10
Hampstead Road - Grand Junction Road	7	6	5	7	10
Portrush Road - Kensington Road	7	5	2	2	1
Regency Road - Main North Road	7	9	4	7	14
Stebonheath - Sth Of Curtis Road - Womma Road	6	11	7	4	3
Marion Road - Cross Road	6	6	5	4	7
Marion Road - Henley Beach Road	6	5	4	4	6
Mount Barker - Strathalbyn - Morphett Street	6	0	0	3	4
Muller Road - North East Road	6	6	4	3	4
Prospect Road - Fitzroy Terrace	6	4	4	3	8
Salisbury Highway - Kings Road	6	3	4	3	9
Sir Donald Bradman Drive - James Congdon Drive	6	1	1	8	6
South Rd / Main South Road - Richmond Road	6	4	4	2	4
Montague Road - Bridge Road	5	4	6	7	6
West Lakes Boulevard - Port Road	5	2	4	3	6
Smart Road - Reservoir Road	5	4	0	0	3
Salisbury Highway - Spains Road	5	1	2	6	2
Salisbury Highway - Park Terrace	5	2	3	4	7

Table 26: Motor Vehicles Involved in & Responsible for Crashes by Region and Severity

Vehicle Type & Region	Fatal Crashes		Serious Injury Crashes		Minor Injury Crashes		Property Damage Crashes		ALL CRASHES	
	Involved	Responsible	Involved	Responsible	Involved	Responsible	Involved	Responsible	Involved	Responsible
PASSENGER VEHICLES										
Metropolitan	24	15	341	184	6440	3223	12345	6157	19150	9579
Rural	56	37	204	147	769	506	1443	914	2472	1604
Subtotal	80	52	545	331	7209	3729	13788	7071	21622	11183
LIGHT TRUCKS(≤4.5 Tonnes)										
Metropolitan	0	0	1	0	25	17	40	19	66	36
Rural	0	0	1	0	2	2	4	1	7	3
Subtotal	0	0	2	0	27	19	44	20	73	39
HEAVY VEHICLE¹										
Metropolitan	2	0	19	5	115	71	1079	652	1215	728
Rural	8	2	16	9	37	26	173	109	234	146
Subtotal	10	2	35	14	152	97	1252	761	1449	874
BUSES										
Metropolitan	0	0	5	3	37	19	337	160	379	182
Rural	0	0	1	0	1	0	32	20	34	20
Subtotal	0	0	6	3	38	19	369	180	413	202
MOTORCYCLES										
Metropolitan	5	4	64	35	320	165	315	171	704	375
Rural	5	3	39	29	83	60	43	19	170	111
Subtotal	10	7	103	64	403	225	358	190	874	486
BICYCLISTS										
Metropolitan	2	2	48	21	450	127	261	72	761	222
Rural	6	2	5	4	16	6	12	4	39	16
Subtotal	8	4	53	25	466	133	273	76	800	238
OTHER										
Metropolitan	1	0	2	0	26	7	123	65	152	72
Rural	2	1	1	0	3	2	30	14	36	17
Subtotal	3	1	3	0	29	9	153	79	188	89
TOTAL										
Metropolitan	34	21	480	248	7413	3629	14500	7296	22427	11194
Rural	77	45	267	189	911	602	1737	1081	2992	1917
TOTAL	111	66	747	437	8324	4231	16237	8377	25419	13111

¹ Excludes Buses and other defined special vehicles

NOTE: Excludes data for crashes where responsibility not attributed to a road user. For example, responsibility not recorded or unriden animal responsible

Table 27: Crashes and Casualties by Vehicle Movement of Motor Vehicle Responsible and Severity (excl. Pedestrian)

Vehicle Movement of Unit Responsible	Crashes					Casualties			
	Fatal Crashes	Serious Injury Crashes	Minor Injury Crashes	Property Damage Crashes	ALL CRASHES	Fatalities	Serious Injuries	Minor Injuries	ALL CASUALTIES
Right Turn	6	68	783	1389	2246	6	76	1019	1101
Left Turn	0	10	265	493	768	0	10	289	299
U Turn	0	6	93	178	277	0	7	119	126
Swerving	2	15	189	622	828	2	22	229	253
Reversing	0	2	14	131	147	0	2	15	17
Stopped on Carriageway	0	1	2	7	10	0	1	2	3
Straight Ahead	52	308	2601	4965	7926	56	377	3284	3717
Entering Private Driveway	0	4	50	79	133	0	5	54	59
Leaving Private Driveway	0	7	130	246	383	0	7	157	164
Parked	0	2	26	22	50	0	2	26	28
Parking - Angle	0	0	4	7	11	0	0	4	4
Parking - Parallel	0	1	5	37	43	0	1	6	7
Unparking -Angle	0	1	7	13	21	0	1	7	8
UnParking - Parallel	0	2	15	70	87	0	2	17	19
Overtaking - on Right	6	9	34	88	137	7	14	45	66
Overtaking - on Left	0	1	13	29	43	0	1	15	16
Other	0	0	0	1	1	0	0	0	0
On Pedestrian Crossing	0	0	0	0	0	0	0	0	0
TOTAL	66	437	4231	8377	13111	71	528	5288	5887

NOTE: Excludes data for crashes where responsibility not attributed to a road user. For example, responsibility not recorded or unriden animal responsible

Table 28: Crashes and Casualties by Pedestrian Responsible, Movement and Severity

Pedestrian Movement	Crashes					Casualties			
	Fatal Crashes	Serious Injury Crashes	Minor Injury Crashes	Property Damage Crashes	ALL CRASHES	Fatalities	Serious Injuries	Minor Injuries	ALL CASUALTIES
Walking on Footpath	0	0	1	1	2	0	0	1	1
On Pedestrian Crossing	0	1	2	3	6	0	1	3	4
Within 30m of Pedestrian Crossing	0	0	3	2	5	0	0	3	3
Alighted from Parked Vehicle	0	0	3	2	5	0	0	3	3
Walked from between Parked Vehicles	0	0	2	0	2	0	0	2	2
Walking on Road	3	6	14	7	30	3	6	16	25
Walking on Road - Against the Traffic	0	0	0	3	3	0	0	0	0
Pushing or Working on Vehicle	0	0	3	1	4	0	0	3	3
Playing on Roadway	0	0	1	1	2	0	0	1	1
Crossing without Control	3	25	65	51	144	3	25	71	99
Other (e.g. Police on Traffic Control)	0	0	1	0	1	0	0	1	1
Crossing with Traffic Signals	0	4	9	4	17	0	4	10	14
TOTAL	6	36	104	75	221	6	36	114	156

Table 29: Crashes by Motor Vehicle Type Involved¹ and Severity

Type of Vehicle ¹	Fatal Crashes	Serious Injury Crashes	Minor Injury Crashes	Property Damage Crashes	ALL CRASHES
Passenger Vehicle	62	396	4088	8301	12847
Light Truck (≤ 4.5Tonnes)	0	2	27	43	72
Heavy Truck	12	31	174	1333	1550
Buses	0	6	38	367	411
Motorcycles / Scooters	10	102	395	353	860
Bicycles	7	51	438	268	764
Other	0	2	2	10	14

Table 30: Crashes and Casualties by Speed Involvement² and Severity

Speed Involvement ² & Region	Crashes					Casualties			
	Fatal Crashes	Serious Injury Crashes	Minor Injury Crashes	Property Damage Crashes	ALL CRASHES	Fatalities	Serious Injuries	Minor Injuries	ALL CASUALTIES
METROPOLITAN									
Yes	9	62	312	644	1027	9	76	384	469
No	15	222	3446	6822	10505	15	247	4188	4450
Sub-total	24	284	3758	7466	11532	24	323	4572	4919
RURAL									
Yes	9	79	166	198	452	10	94	226	330
No	42	122	469	982	1615	46	159	670	875
Sub-total	51	201	635	1180	2067	56	253	896	1205
TOTAL	75	485	4393	8646	13599	80	576	5468	6124

¹ The vehicle type categories are not mutually exclusive and must not be added together. It is where the crash has involved at least one of the vehicle types. Where one crash has involved two or more of the same vehicle type, then it has been counted once

² Speed contribution definition is located under *Definitions & Explanations*

ROAD CASUALTIES IN 2018

Road Users
Seatbelts & Helmets
Age & Sex Distribution
Alcohol
Drug
Licence
Involvement & Responsibility

Table 31: Casualties by Road User Type, Severity, Age and Sex

Road User Types	Sex	0-15			16-19			20-24			25-29			30-39			40-49			50-59			60-69			70+			Unknown			ALL CASUALTIES		
		F	SI	MI	F	SI	MI	F	SI	MI	F	SI	MI	F	SI	MI	F	SI	MI	F	SI	MI	F	SI	MI	F	SI	MI	F	SI	MI	F	SI	MI
VEHICLE OCCUPANT																																		
Driver	M	0	0	1	4	11	97	3	19	146	3	17	157	3	28	269	5	26	220	3	20	211	3	21	142	7	20	122	0	6	34	31	168	1399
	F	0	0	0	2	11	128	1	12	240	0	4	232	1	14	372	0	16	310	2	19	277	2	12	172	2	20	159	0	1	23	10	109	1913
	Subtotal	0	0	1	6	22	226	4	31	386	3	21	389	4	42	641	5	42	530	5	39	488	5	33	314	9	40	281	0	7	61	41	277	3317
Passenger	M	1	5	177	2	7	52	1	4	40	0	2	17	2	5	43	1	1	15	1	4	12	1	1	9	1	4	22	0	1	25	10	34	412
	F	1	5	137	1	8	71	0	4	70	2	5	49	0	4	68	0	2	56	0	2	54	0	5	56	2	14	69	0	4	30	6	53	660
	Subtotal	2	10	315	3	15	123	1	8	110	2	7	66	2	9	111	1	3	71	1	6	66	1	6	65	3	18	91	0	5	61	16	87	1079
MOTORCYCLIST																																		
Rider	M	0	0	0	1	7	42	0	14	60	0	12	36	0	12	48	4	14	51	1	20	66	3	11	27	1	4	12	0	0	5	10	94	347
	F	0	0	0	0	0	7	0	2	2	0	1	6	0	0	8	0	0	5	0	0	13	0	0	1	0	0	0	0	0	2	0	3	44
	Subtotal	0	0	0	1	7	49	0	16	62	0	13	42	0	12	56	4	14	56	1	20	79	3	11	28	1	4	12	0	0	7	10	97	391
Pillion Passenger	M	0	0	0	0	1	0	0	0	0	0	0	0	0	0	0	0	0	0	0	0	0	0	0	1	0	0	0	0	0	1	0	1	1
	F	0	1	0	0	0	0	0	0	0	0	1	1	0	0	2	0	0	3	0	2	4	0	0	0	0	1	0	0	0	0	0	5	10
	Subtotal	0	1	0	0	1	0	0	0	0	0	1	1	0	0	2	0	0	3	0	2	4	0	0	1	0	1	0	0	0	0	0	6	11
PEDESTRIAN																																		
M	M	1	6	19	0	2	10	2	2	8	0	2	13	0	5	13	1	2	8	0	3	12	0	2	12	0	2	10	0	5	6	4	31	111
	F	0	3	16	0	1	10	0	3	13	0	3	13	1	1	16	0	4	9	0	0	12	0	2	15	1	10	15	0	0	2	2	27	121
	Subtotal	1	9	35	0	3	20	2	5	21	0	5	26	1	6	29	1	6	17	0	3	24	0	4	27	1	12	25	0	5	9	6	58	233
BICYCLIST																																		
M	M	1	5	29	0	0	20	0	3	17	1	1	16	0	3	50	2	10	76	0	12	68	2	1	27	1	7	14	0	0	18	7	42	335
	F	0	1	2	0	0	9	0	0	10	0	2	9	0	0	15	0	4	31	0	1	12	0	0	8	0	1	2	0	0	1	0	9	99
	Subtotal	1	6	31	0	0	29	0	3	27	1	3	25	0	3	65	2	14	108	0	13	80	2	1	35	1	8	16	0	0	19	7	51	435
OTHER ROAD USER																																		
M	M	0	0	0	0	0	0	0	0	0	0	0	0	0	0	0	0	0	0	0	0	0	0	0	0	0	0	0	0	0	0	0	0	0
	F	0	0	0	0	0	0	0	0	0	0	0	0	0	0	0	0	0	0	0	0	2	0	0	0	0	0	0	0	0	0	0	0	2
	Subtotal	0	0	0	0	0	0	0	0	0	0	0	0	0	0	0	0	0	0	0	0	2	0	0	0	0	0	0	0	0	0	0	0	2
ALL ROAD USERS																																		
M	M	3	16	226	7	28	221	6	42	271	4	34	239	5	53	423	13	53	370	5	59	369	9	36	218	10	37	180	0	12	88	62	370	2605
	F	1	10	155	3	20	225	1	21	335	2	16	310	2	19	481	0	26	414	2	24	374	2	19	252	5	46	245	0	5	58	18	206	2849
	TOTAL	4	26	382	10	48	447	7	63	606	6	50	549	7	72	904	13	79	785	7	83	743	11	55	470	15	83	425	0	17	157	80	576	5468

F – Fatality, SI – Serious Injury, MI – Minor Injury

Table 32: Casualties by Unit Type and Severity

Unit Type	Fatalities	Serious Injuries	Minor Injuries	ALL CASUALTIES
Passenger Vehicle	53	350	4343	4746
Light Truck (≤4.5Tonnes)	0	1	6	7
Heavy Vehicle ¹	4	11	42	57
Bus	0	2	5	7
Motorcycle	10	103	402	515
Bicycle	7	51	435	493
Pedestrian	6	58	233	297
Other	0	0	2	2
TOTAL	80	576	5468	6124

Table 33: Motor Vehicle Casualties by Position in Vehicle and Severity (excl. Bicycles)

Position in Vehicle	Fatalities	Serious Injuries	Minor Injuries	ALL CASUALTIES
FRONT SEAT PASSENGER				
Driver	41	277	3317	3635
Middle	0	0	2	2
Left	11	58	664	733
REAR SEAT PASSENGER				
Right	2	9	159	170
Middle	1	6	50	57
Left	1	10	179	190
CHILD NURSED				
Front	0	0	0	0
Rear	0	0	0	0
UTILITY/TRUCK				
Rear	0	1	0	1
VAN				
Passenger	1	1	0	2
BUS				
Passenger	0	2	6	8
MOTORCYCLE				
Rider	10	97	391	498
Passenger	0	6	11	17
TOWED VEHICLE				
Occupant	0	0	0	0
UNKNOWN/OTHER				
	0	0	21	21
Sub-total	67	467	4800	5334
TOTAL²	80	576	5468	6124

¹ Excludes Buses

² Includes not applicable user types

Table 34: Casualties by Road User Type, Safety Device and Severity

Road User Type & Safety Device Use ¹	Fatalities	Serious Injuries	Minor Injuries	ALL CASUALTIES
DRIVER				
Fitted – Worn	32	217	3110	3359
Fitted – Not Worn	5	16	37	58
Fitted – Unknown if Worn	4	44	170	218
Not Fitted	0	0	0	0
Unknown	0	0	0	0
Sub-total	41	277	3317	3635
PASSENGER				
Fitted – Worn	10	70	926	1006
Fitted – Not Worn	3	8	25	36
Fitted – Unknown if Worn	2	6	72	80
Child Restraint – Worn	1	1	49	51
Child Restraint– Not Worn	0	0	3	3
Not Fitted	0	1	4	5
Not Applicable	0	1	0	1
Unknown	0	0	0	0
Sub-total	16	87	1079	1182
MOTORCYCLE RIDER/PASSENGER				
Helmet Worn	10	99	389	498
Helmet – Not Worn	0	2	2	4
Unknown	0	2	11	13
Sub-total	10	103	402	515
BICYCLIST RIDER/PASSENGER				
Helmet Worn	6	46	412	464
Helmet – Not Worn	1	3	10	14
Unknown	0	2	13	15
Sub-total	7	51	435	493
ALL CASUALTIES				
Device Worn	59	433	4886	5378
Device Not Worn	9	30	81	120
Unknown/Not Applicable	6	55	268	329
Sub-total	74	518	5235	5827
TOTAL²	80	576	5468	6124

¹ Police reporting of safety device usage is often not based on direct observation by police officers and may be reliant upon statements by the casualties themselves or other involved parties.

² Includes not applicable safety device use/users (pedestrians)

Table 35: Driver and Motorcycle Rider Casualties with BAC

Severity	Sex	Blood Alcohol Concentration						Not Tested/ Unknown	TOTAL
		Negative	0.001- 0.049	0.050- 0.079	0.080- 0.149	0.150- 0.199	.200+		
Minor Injury	M	1008	17	16	40	26	23	616	1746
	F	1040	5	2	12	5	9	884	1957
	Sub-total¹	2050	22	18	52	31	32	1503	3708
Serious Injury	M	181	7	1	15	6	4	48	262
	F	86	1	1	2	2	3	17	112
	Sub-total¹	267	8	2	17	8	7	65	374
Fatalities	M	29	2	0	4	2	2	2	41
	F	8	1	0	0	1	0	0	10
	Sub-total¹	37	3	0	4	3	2	2	51
ALL CASUALTIES	M	1218	26	17	59	34	29	666	2049
	F	1134	7	3	14	8	12	901	2079
	TOTAL¹	2354	33	20	73	42	41	1570	4133

Table 36: Driver and Motorcycle Rider Casualties with Drugs

Age	Sex	Drugs					Combination of drugs ²	Not Tested/ Unknown	TOTAL
		Negative	THC	MDMA	Meth				
Minor Injury	M	944	76	5	56	18	647	1746	
	F	1006	24	0	22	3	902	1957	
	Sub-total¹	1951	100	5	78	21	1553	3708	
Serious Injury	M	167	19	2	15	7	52	262	
	F	77	7	2	3	1	22	112	
	Sub-total¹	244	26	4	18	8	74	374	
Fatalities	M	28	4	0	5	1	3	41	
	F	10	0	0	0	0	0	10	
	Sub-total¹	38	4	0	5	1	3	51	
ALL CASUALTIES	M	1139	99	7	76	26	702	2049	
	F	1093	31	2	25	4	924	2079	
	TOTAL¹	2233	130	9	101	30	1630	4133	

¹ Unknown sex included

² Two or more of THC, MDMA or Meth

Table 37a: Road User Involved in & Responsible for Crashes by Age & Sex:
Fatal Crashes

Age	Sex	Drivers		Motorcycle Riders		Bicycle Riders		Pedestrians		Other Road Users		ALL ROAD USERS	
		Involved	Responsible	Involved	Responsible	Involved	Responsible	Involved	Responsible	Involved	Responsible	Involved	Responsible
0-15	M	0	0	0	0	1	1	1	1	0	0	2	2
	F	0	0	0	0	1	0	0	0	0	0	1	0
	Sub-total¹	0	0	0	0	2	1	1	1	0	0	3	2
16-19	M	8	8	1	1	0	0	0	0	0	0	9	9
	F	2	2	0	0	0	0	0	0	0	0	2	2
	Sub-total¹	10	10	1	1	0	0	0	0	0	0	11	11
20-24	M	7	5	0	0	0	0	2	2	0	0	9	7
	F	2	1	0	0	0	0	0	0	0	0	2	1
	Sub-total¹	9	6	0	0	0	0	2	2	0	0	11	8
25-29	M	7	4	0	0	1	0	0	0	0	0	8	4
	F	4	2	0	0	0	0	0	0	0	0	4	2
	Sub-total¹	11	6	0	0	1	0	0	0	0	0	12	6
30-39	M	7	5	0	0	0	0	0	0	0	0	7	5
	F	4	2	0	0	0	0	1	1	0	0	5	3
	Sub-total¹	11	7	0	0	0	0	1	1	0	0	12	8
40-49	M	15	7	4	2	2	2	1	1	0	0	22	12
	F	2	0	0	0	0	0	0	0	0	0	2	0
	Sub-total¹	17	7	4	2	2	2	1	1	0	0	24	12
50-59	M	11	4	1	1	0	0	0	0	0	0	12	5
	F	2	2	0	0	0	0	0	0	0	0	2	2
	Sub-total¹	13	6	1	1	0	0	0	0	0	0	14	7
60-69	M	8	4	3	2	2	1	0	0	0	0	13	7
	F	2	1	0	0	0	0	0	0	0	0	2	1
	Sub-total¹	10	5	3	2	2	1	0	0	0	0	15	8
70+	M	8	6	1	1	1	0	0	0	0	0	10	7
	F	2	2	0	0	0	0	1	1	0	0	3	3
	Sub-total¹	10	8	1	1	1	0	1	1	0	0	13	10
Unknown	M	0	0	0	0	0	0	0	0	0	0	0	0
	F	0	0	0	0	0	0	0	0	0	0	0	0
	Sub-total¹	0	0	0	0	0	0	0	0	0	0	0	0
ALL AGES	M	71	43	10	7	7	4	4	4	0	0	92	58
	F	20	12	0	0	1	0	2	2	0	0	23	14
	TOTAL¹	91	55	10	7	8	4	6	6	0	0	115	72

¹ Unknown sex included

Table 37b: Road User Involved in & Responsible for Crashes by Age & Sex:
Serious Injury Crashes

Age	Sex	Drivers		Motorcycle Riders		Bicycle Riders		Pedestrians		Other Road Users		ALL ROAD USERS	
		Involved	Responsible	Involved	Responsible	Involved	Responsible	Involved	Responsible	Involved	Responsible	Involved	Responsible
0-15	M	0	0	0	0	5	5	6	5	0	0	11	10
	F	0	0	0	0	0	0	3	2	0	0	3	2
	Sub-total¹	0	0	0	0	5	5	9	7	0	0	14	12
16-19	M	22	15	7	6	0	0	2	2	0	0	31	23
	F	15	12	0	0	0	0	2	1	0	0	17	13
	Sub-total¹	37	27	7	6	0	0	4	3	0	0	48	36
20-24	M	41	27	15	9	4	3	2	2	0	0	62	41
	F	26	19	2	2	0	0	4	2	0	0	32	23
	Sub-total¹	67	46	17	11	4	3	6	4	0	0	94	64
25-29	M	35	21	12	6	1	0	2	2	0	0	50	29
	F	10	6	1	1	2	1	3	1	0	0	16	9
	Sub-total¹	45	27	13	7	3	1	5	3	0	0	66	38
30-39	M	62	35	13	7	3	1	7	3	0	0	85	46
	F	29	20	1	1	1	0	1	1	0	0	32	22
	Sub-total¹	91	55	14	8	4	1	8	4	0	0	117	68
40-49	M	63	35	14	11	10	3	2	1	0	0	89	50
	F	32	12	0	0	3	1	5	2	0	0	40	15
	Sub-total¹	95	47	14	11	13	4	7	3	0	0	129	65
50-59	M	48	27	21	9	13	8	3	3	2	0	87	47
	F	39	22	0	0	1	0	0	0	0	0	40	22
	Sub-total¹	87	49	21	9	14	8	3	3	2	0	127	69
60-69	M	41	24	12	10	1	0	3	0	0	0	57	34
	F	21	8	1	1	0	0	3	1	0	0	25	10
	Sub-total¹	62	32	13	11	1	0	6	1	0	0	82	44
70+	M	31	26	4	1	7	3	2	2	0	0	44	32
	F	22	20	0	0	1	0	10	3	0	0	33	23
	Sub-total¹	53	46	4	1	8	3	12	5	0	0	77	55
Unknown	M	10	8	0	0	0	0	5	3	0	0	15	11
	F	1	1	0	0	0	0	0	0	0	0	1	1
	Sub-total¹	28	18	0	0	0	0	5	3	0	0	33	21
ALL AGES	M	353	218	98	59	44	23	34	23	2	0	531	323
	F	195	120	5	5	8	2	31	13	0	0	239	140
	TOTAL¹	565	347	103	64	52	25	65	36	2	0	787	472

¹ Unknown sex included

Table 37c: Road User Involved in & Responsible for Crashes by Age & Sex:
Minor Injury Crashes

Age	Sex	Drivers		Motorcycle Riders		Bicycle Riders		Pedestrians		Other Road Users		ALL ROAD USERS	
		Involved	Responsible	Involved	Responsible	Involved	Responsible	Involved	Responsible	Involved	Responsible	Involved	Responsible
0-15	M	1	1	0	0	29	17	21	13	0	2	51	33
	F	1	1	0	0	2	2	17	10	0	0	20	13
	Sub-total¹	2	2	0	0	31	19	38	23	0	2	71	46
16-19	M	248	184	42	33	22	6	10	4	0	0	322	227
	F	212	143	7	2	9	4	9	4	0	0	237	153
	Sub-total¹	461	328	49	35	31	10	19	8	0	0	560	381
20-24	M	412	277	61	40	22	7	8	5	0	0	503	329
	F	400	217	3	2	10	3	12	7	0	0	425	229
	Sub-total¹	812	494	64	42	32	10	20	12	0	0	928	558
25-29	M	392	241	38	18	17	5	13	10	0	2	460	276
	F	377	182	6	3	9	2	13	1	0	0	405	188
	Sub-total¹	769	423	44	21	26	7	26	11	0	2	865	464
30-39	M	691	330	47	29	51	6	14	6	1	0	804	371
	F	662	313	7	3	13	3	17	5	0	0	699	324
	Sub-total¹	1353	643	54	32	64	9	31	11	1	0	1503	695
40-49	M	600	301	52	25	76	18	10	4	0	0	738	348
	F	532	198	6	2	32	6	9	3	0	0	579	209
	Sub-total¹	1132	499	58	27	109	24	19	7	0	0	1318	557
50-59	M	532	252	69	33	73	23	12	3	0	0	686	311
	F	441	153	13	4	12	3	13	3	1	0	480	163
	Sub-total¹	973	405	82	37	85	26	25	6	1	0	1166	474
60-69	M	349	165	28	19	29	11	13	7	0	0	419	202
	F	277	119	1	1	8	3	14	4	0	0	300	127
	Sub-total¹	626	284	29	20	37	14	27	11	0	0	719	329
70+	M	274	169	12	5	14	5	10	7	0	0	310	186
	F	251	155	0	0	2	2	15	4	0	0	268	161
	Sub-total¹	525	324	12	5	16	7	25	11	0	0	578	347
Unknown	M	75	45	6	4	19	2	7	4	0	0	107	55
	F	42	26	2	1	1	0	3	0	0	0	48	27
	Sub-total¹	626	468	10	6	31	5	11	4	0	0	678	483
ALL AGES	M	3574	1965	355	206	352	100	118	63	1	4	4400	2338
	F	3195	1507	45	18	98	28	122	41	1	0	3461	1594
	TOTAL¹	7279	3870	402	225	462	131	241	104	2	4	8386	4334

¹ Unknown sex included

Table 37d: Road User Involved in & Responsible for Crashes by Age & Sex:
Property Damage Crashes

Age	Sex	Drivers		Motorcycle Riders		Bicycle Riders		Pedestrians		Other Road Users		ALL ROAD USERS	
		Involved	Responsible	Involved	Responsible	Involved	Responsible	Involved	Responsible	Involved	Responsible	Involved	Responsible
0-15	M	4	4	4	3	13	7	8	5	0	1	29	20
	F	2	2	0	0	2	2	3	0	0	0	7	4
	Sub-total¹	6	6	4	3	15	9	11	5	0	1	36	24
16-19	M	605	454	26	10	9	1	2	1	0	0	642	466
	F	442	306	0	0	1	0	4	2	0	0	447	308
	Sub-total¹	1050	763	26	10	10	1	6	3	0	0	1092	777
20-24	M	1133	709	50	26	13	4	7	4	0	0	1203	743
	F	685	397	5	4	4	1	9	2	0	0	703	404
	Sub-total¹	1820	1108	55	30	17	5	16	6	0	0	1908	1149
25-29	M	965	558	31	17	7	1	6	3	0	0	1009	579
	F	581	321	3	2	3	0	3	0	0	0	590	323
	Sub-total¹	1546	879	34	19	10	1	9	3	0	0	1599	902
30-39	M	1616	838	36	23	25	6	9	3	1	0	1687	870
	F	967	471	1	0	7	2	6	2	1	0	982	475
	Sub-total¹	2586	1311	37	23	32	8	15	5	2	0	2672	1347
40-49	M	1383	641	38	15	42	6	5	4	1	0	1469	666
	F	807	357	7	4	9	2	2	0	0	0	825	363
	Sub-total¹	2191	998	45	19	51	8	7	4	2	0	2296	1029
50-59	M	1213	573	43	20	25	8	6	3	3	0	1290	604
	F	658	262	2	1	3	0	3	1	1	0	667	264
	Sub-total¹	1871	835	45	21	28	8	9	4	4	0	1957	868
60-69	M	746	380	15	7	10	0	9	3	0	0	780	390
	F	396	180	1	0	3	0	5	1	0	0	405	181
	Sub-total¹	1142	560	16	7	13	0	14	4	0	0	1185	571
70+	M	577	361	3	2	3	0	6	1	0	0	589	364
	F	377	253	0	0	0	0	4	1	0	0	381	254
	Sub-total¹	955	614	3	2	3	0	10	2	0	0	971	618
Unknown	M	241	140	9	7	14	7	11	8	0	0	275	162
	F	92	46	0	0	2	0	6	3	0	0	100	49
	Sub-total¹	1551	1018	69	55	95	36	54	39	2	1	1771	1149
ALL AGES	M	8483	4658	255	130	161	40	69	35	5	1	8973	4864
	F	5007	2595	19	11	34	7	45	12	2	0	5107	2625
	TOTAL¹	14718	8092	334	189	274	76	151	75	10	2	15487	8434

¹ Unknown sex included

Table 37e: Road User Involved in & Responsible for Crashes by Age & Sex:
All Crashes

Age	Sex	Drivers		Motorcycle Riders		Bicycle Riders		Pedestrians		Other Road Users		ALL ROAD USERS	
		Involved	Responsible	Involved	Responsible	Involved	Responsible	Involved	Responsible	Involved	Responsible	Involved	Responsible
0-15	M	5	5	4	3	48	30	36	24	0	3	93	65
	F	3	3	0	0	5	4	23	12	0	0	31	19
	Sub-total¹	8	8	4	3	53	34	59	36	0	3	124	84
16-19	M	883	661	76	50	31	7	14	7	0	0	1004	725
	F	671	463	7	2	10	4	15	7	0	0	703	476
	Sub-total¹	1558	1128	83	52	41	11	29	14	0	0	1711	1205
20-24	M	1593	1018	126	75	39	14	19	13	0	0	1777	1120
	F	1113	634	10	8	14	4	25	11	0	0	1162	657
	Sub-total¹	2708	1654	136	83	53	18	44	24	0	0	2941	1779
25-29	M	1399	824	81	41	26	6	21	15	0	2	1527	888
	F	972	511	10	6	14	3	19	2	0	0	1015	522
	Sub-total¹	2371	1335	91	47	40	9	40	17	0	2	2542	1410
30-39	M	2376	1208	96	59	79	13	30	12	2	0	2583	1292
	F	1662	806	9	4	21	5	25	9	1	0	1718	824
	Sub-total¹	4041	2016	105	63	100	18	55	21	3	0	4304	2118
40-49	M	2061	984	108	53	130	29	18	10	1	0	2318	1076
	F	1373	567	13	6	44	9	16	5	0	0	1446	587
	Sub-total¹	3435	1551	121	59	175	38	34	15	2	0	3767	1663
50-59	M	1804	856	134	63	111	39	21	9	5	0	2075	967
	F	1140	439	15	5	16	3	16	4	2	0	1189	451
	Sub-total¹	2944	1295	149	68	127	42	37	13	7	0	3264	1418
60-69	M	1144	573	58	38	42	12	25	10	0	0	1269	633
	F	696	308	3	2	11	3	22	6	0	0	732	319
	Sub-total¹	1840	881	61	40	53	15	47	16	0	0	2001	952
70+	M	890	562	20	9	25	8	18	10	0	0	953	589
	F	652	430	0	0	3	2	30	9	0	0	685	441
	Sub-total¹	1543	992	20	9	28	10	48	19	0	0	1639	1030
Unknown	M	326	193	15	11	33	9	23	15	0	0	397	228
	F	135	73	2	1	3	0	9	3	0	0	149	77
	Sub-total¹	2205	1504	79	61	126	41	70	46	2	1	2482	1653
ALL AGES	M	12481	6884	718	402	564	167	225	125	8	5	13996	7583
	F	8417	4234	69	34	141	37	200	68	3	0	8830	4373
	TOTAL¹	22653	12364	849	485	796	236	463	221	14	6	24775	13312

¹ Unknown sex included

Table 38: Drivers & Motorcycle Riders Involved in & Responsible for Crashes by Licence Type & Severity

Licence Type	Fatal Crashes		Serious Injury Crashes		Minor Injury Crashes		Property Damage Crashes		ALL CRASHES	
	Involved	Responsible	Involved	Responsible	Involved	Responsible	Involved	Responsible	Involved	Responsible
Learner's Permit	1	1	19	14	126	82	161	103	307	200
Probationary Licence	1	1	7	5	27	17	72	51	107	74
Full Licence	77	40	502	291	5942	2842	11230	5616	17751	8789
Unlicensed	8	7	38	30	125	107	176	144	347	288
Conditional Licence	0	0	0	0	0	0	0	0	0	0
Provisional 1 Licence	5	5	22	16	314	231	726	547	1067	799
Provisional 2 Licence	6	6	40	30	501	331	1045	714	1592	1081
Disqualified Licence	0	0	3	3	3	3	11	9	17	15
Unknown	3	2	37	22	643	482	1631	1097	2314	1603
TOTAL	101	62	668	411	7681	4095	15052	8281	23502	12849

Table 39a: Drivers & Motorcycle Riders Responsible for Crashes by Licence Type and Age: Fatal Crashes

Age Group	Learner's Permit	Probationary Licence	Full Licence	Unlicensed	Conditional Licence	P1 Licence	P2 Licence	Disqualified	Unknown	Total
0-15	0	0	0	0	0	0	0	0	0	0
16-19	1	0	0	2	0	5	2	0	1	11
20-24	0	0	4	0	0	0	2	0	0	6
25-29	0	0	3	2	0	0	0	0	1	6
30-39	0	0	5	1	0	0	1	0	0	7
40-49	0	0	6	2	0	0	1	0	0	9
50-59	0	0	7	0	0	0	0	0	0	7
60-69	0	1	6	0	0	0	0	0	0	7
70+	0	0	9	0	0	0	0	0	0	9
Unknown	0	0	0	0	0	0	0	0	0	0
TOTAL	1	1	40	7	0	5	6	0	2	62

Table 39b: Drivers & Motorcycle Riders Responsible for Crashes by Licence Type and Age:
Serious Injury Crashes

Age Group	Learner's Permit	Probationary Licence	Full Licence	Uncensored	Conditional Licence	P1 Licence	P2 Licence	Disqualified	Unknown	Total
0-15	0	0	0	0	0	0	0	0	0	0
16-19	7	0	0	1	0	10	15	0	0	33
20-24	5	0	35	4	0	3	9	0	1	57
25-29	0	0	23	7	0	0	1	0	3	34
30-39	1	3	41	8	0	2	3	1	4	63
40-49	1	1	47	4	0	1	1	2	1	58
50-59	0	0	51	5	0	0	0	0	2	58
60-69	0	0	41	1	0	0	1	0	0	43
70+	0	0	46	0	0	0	0	0	1	47
Unknown	0	1	7	0	0	0	0	0	10	18
TOTAL	14	5	291	30	0	16	30	3	22	411

Table 39c: Drivers & Motorcycle Riders Responsible for Crashes by Licence Type and Age:
Minor Injury Crashes

Age Group	Learner's Permit	Probationary Licence	Full Licence	Uncensored	Conditional Licence	P1 Licence	P2 Licence	Disqualified	Unknown	Total
0-15	0	0	0	2	0	0	0	0	0	2
16-19	38	1	13	5	0	146	150	0	10	363
20-24	17	0	332	16	0	36	113	2	20	536
25-29	9	2	344	24	0	16	37	1	11	444
30-39	11	5	584	26	0	16	19	0	14	675
40-49	3	5	482	14	0	6	5	0	11	526
50-59	2	2	415	9	0	4	1	0	9	442
60-69	0	1	292	4	0	1	1	0	5	304
70+	0	1	324	4	0	0	0	0	0	329
Unknown	2	0	56	3	0	6	5	0	402	474
Total	82	17	2842	107	0	231	331	3	482	4095

Table 39d: Drivers & Motorcycle Riders Responsible for Crashes by Licence Type and Age:
Property Damage Crashes

Age Group	Learner's Permit	Probationary Licence	Full Licence	Unlicensed	Conditional Licence	P1 Licence	P2 Licence	Disqualified	Unknown	Total
0-15	0	0	0	9	0	0	0	0	0	9
16-19	41	4	24	12	0	359	302	1	30	773
20-24	23	4	710	31	0	89	234	3	44	1138
25-29	11	4	713	27	0	38	73	2	30	898
30-39	13	16	1149	34	0	24	54	2	42	1334
40-49	4	10	929	17	0	12	15	0	30	1017
50-59	2	7	808	4	0	2	7	0	26	856
60-69	0	3	546	4	0	2	2	0	10	567
70+	0	1	603	2	0	0	0	0	10	616
Unknown	9	2	134	4	0	21	27	1	875	1073
Total	103	51	5616	144	0	547	714	9	1097	8281

Table 39e: Drivers & Motorcycle Riders Responsible for Crashes by Licence Type and Age:
All Crashes

Age Group	Learner's Permit	Probationary Licence	Full Licence	Unlicensed	Conditional Licence	P1 Licence	P2 Licence	Disqualified	Unknown	Total
0-15	0	0	0	11	0	0	0	0	0	11
16-19	87	5	37	20	0	520	469	1	41	1180
20-24	45	4	1081	51	0	128	358	5	65	1737
25-29	20	6	1083	60	0	54	111	3	45	1382
30-39	25	24	1779	69	0	42	77	3	60	2079
40-49	8	16	1464	37	0	19	22	2	42	1610
50-59	4	9	1281	18	0	6	8	0	37	1363
60-69	0	5	885	9	0	3	4	0	15	921
70+	0	2	982	6	0	0	0	0	11	1001
Unknown	11	3	197	7	0	27	32	1	1287	1565
Total	200	74	8789	288	0	799	1081	15	1603	12849

Reference Information for South Australia

Population
Licence
Vehicle Information

Table 40: Estimated Population¹ by Age and Sex

Age Group	Sex		ALL PERSONS
	Male	Female	
0-15	167394	159098	326492
16-19	42818	40673	83491
20-24	59263	56155	115418
25-29	58148	57640	115788
30-39	112160	113888	226048
40-49	109176	110447	219623
50-59	110938	114794	225732
60-69	96929	102786	199715
70+	100935	123015	223950
TOTAL	857761	878496	1736257

Table 41: Licence and Permit Holders² by Age and Sex

Age Group	Sex			ALL PERSONS
	Male	Female	Unknown	
16-19	32008	31236	78	63322
20-24	48,534	46262	46	94842
25-29	51076	49165	33	100274
30-39	105291	103466	64	208821
40-49	106437	103953	30	210420
50-59	109711	106459	21	216191
60-69	95,973	92686	10	188669
70+	86,806	75,815	5	162626
TOTAL	635836	609042	287	1245165

¹ Population as of June 2018. Source: Australian Bureau of Statistics, *Australian Demographic Statistics*, cat.no. 3101.0

² At December 2018. Source: TRUMPS database, Registration & Licensing Section, DPTI

Table 42: Motor Vehicle on Register¹ by Vehicle Type

Type of Vehicle	ALL VEHICLES
Cars & Station Wagons	1,069,458
Utilities	175,266
Panel Vans	36,513
Rigid & Other Trucks	41,907
Articulated Trucks	8,886
Other Commercials ²	14,609
Buses	4,199
Motorcycles	45,741
Other ³	46,404
TOTAL	1,442,983

Table 43: Vehicle Kilometres Travelled⁴ (VKT) by Vehicle Type

Type of Vehicle	TOTAL VKT ('000 000)
Passenger Vehicle	13,071
Light Commercials	3,318
Rigid Trucks	514
Articulated Trucks	663
Non-freight Carrying Trucks	14
Motorcycles	93
Buses	143
TOTAL	17,817

¹ At June 2018. Excludes trailers, caravans, plant and equipment. Source: TRUMPS database, Registration & Licensing Section, DPTI

² Includes animal transporter vehicle, drilling rig vehicle, earth moving vehicle, garbage truck, industrial vehicle, mobile crane vehicle, tanker vehicle

³ Includes ambulance, armoured vehicle, fork lift, land implement vehicle, golf buggy, tractors

⁴ Travel for the year ended June 2018. Source: Australian Bureau of Statistics, *Survey of Motor Vehicle Use*, cat. no. 9208.0