

ROAD CRASHES in South Australia

Statistical Summary of Road Crashes
& Casualties in 2021



**ROAD
SAFETY**



Government
of South Australia

Prepared by Department for Infrastructure and Transport

Only available in electronic format from the Department for Infrastructure and Transport Road Safety website:
<http://dpti.sa.gov.au/towardszerotogether>

Further Information

For further information concerning road crash statistics for South Australia, write to the

Department for Infrastructure and Transport
GPO Box 1533
ADELAIDE SA 5000
Email: MIT.CommunityRelations@sa.gov.au

Full Title: Road Crashes in South Australia: Statistical Summary of Road Crashes & Casualties in 2021

Type of Report and Period Covered: Statistical, 2021

Pages: 63

ISSN 2653-1224

Key Words: crash, crash rate, casualty, serious injury, injuries, age, blood alcohol concentration, day, hour, fatality, month, road user, severity, sex, vehicle movement, year, statistical

The data presented in this report is for information purposes only and should be used with care before drawing conclusions not contained in this report. Numbers may not match with future publications due to the database continually being updated with new information.

© Department for Infrastructure and Transport, the Government of South Australia, 2022. This work is licensed under the Creative Commons Attribution 4.0 Licence which allows re-users to copy and distribute the work in any medium or format in unadapted form only, and only so long as attribution is given to the Department for Infrastructure and Transport, the Government of South Australia. The license allows for commercial use. All other rights are reserved.

Re-users of this work are required to attribute the work as follows: Department for Infrastructure and Transport, the Government of South Australia, >>Road Crashes in South Australia: Statistical Summary of Road Crashes & Casualties in 2021<<, Sourced on >>insert date the content was sourced<<, >>dpti.sa.gov.au/towardszerotogether<<

Contents

KEY POINTS 2021	3
SUMMARY DATA FOR 2021	4
PREFACE	5
How crashes are processed?	5
Scope	5
Related Publications	5
Acknowledgements	5
Definitions & Explanatory Notes	6
CRASH AND CASUALTY TRENDS	
Table 1 Trends in South Australia, 1995 - 2021	9
Figure 1 Data Trends in South Australia, 1995 - 2021	10
Figure 2 Fatality Rate in South Australia, 1995 - 2021	10
Table 2 Comparison with other Australian Jurisdictions, 2021	11
Table 3a Road Crash Fatalities by Age Group compared with Deaths Registered in South Australia, 2020	11
Table 3b Age of Passenger Vehicles Involved in Serious Casualty Crashes, 2017 - 2021	11
Table 4 Casualties by Road User Type and Severity, 1995 - 2021	12
Table 5 Casualties by Age Group and Severity, 1995 - 2021	13
Table 6 Casualties by Sex and Severity, 1995 - 2021	14
Table 7 Crashes and Casualties by Region and Severity, 1995 - 2021	15
ROAD CRASHES in 2021	16
Time Distribution of Crashes	
Table 8 Crashes and Casualties during Holiday Periods by Severity	17
Table 9a Casualty Crashes by Time of Day, Day of Week	18
Figure 3 Casualty Crashes by Time of Day, Day of Week	18
Table 9b Casualties by Time of Day, Day of Week	19
Table 9c All Crashes by Time of Day, Day of Week	19
Table 10 Crashes and Casualties by Month of Year and Severity	19
Crash Type	
Table 11a Crashes and Casualties by Crash Type and Severity: <i>Metropolitan Adelaide</i>	20
Table 11b Crashes and Casualties by Crash Type and Severity: <i>Rural</i>	20
Table 11c Crashes and Casualties by Crash Type and Severity: <i>South Australia</i>	21
Table 12 Hit Fixed Object Crashes by Object First Hit and Severity	21
Table 13 Single Vehicle Crashes by Motor Vehicle Type and Severity	21
Figure 4 Definition for Coding Accidents Table	22
Table 14a Crashes and Casualties by Crash Type Code and Severity: <i>Metropolitan Adelaide</i>	23
Table 14b Crashes and Casualties by Crash Type Code and Severity: <i>Rural</i>	25
Table 14c Crashes and Casualties by Crash Type Code and Severity: <i>South Australia</i>	27
Location & Distribution of Crashes	
Table 15a Crashes and Casualties by Location Type and Severity: <i>Metropolitan Adelaide</i>	29
Table 15b Crashes and Casualties by Location Type and Severity: <i>Rural</i>	29
Table 15c Crashes and Casualties by Location Type and Severity: <i>South Australia</i>	30
Table 16a Crashes and Casualties by Traffic Control and Severity: <i>Metropolitan Adelaide</i>	30
Table 16b Crashes and Casualties by Traffic Control and Severity: <i>Rural</i>	31
Table 16c Crashes and Casualties by Traffic Control and Severity: <i>South Australia</i>	31
Table 17 Crashes and Casualties by Area Speed Limit, Region & Severity	32
Table 18 Crashes and Casualties by Light Conditions, Region & Severity	32
Table 19 Crashes and Casualties by Vertical Alignment, Region & Severity	33
Table 20 Crashes and Casualties by Horizontal Alignment, Region & Severity	33
Table 21 Crashes and Casualties by Road Moisture, Region & Severity	34
Table 22 Crashes and Casualties by Route and Severity	34
Table 23a Crashes and Casualties by Local Government Area and Severity: <i>Metropolitan Adelaide: Council Roads</i>	35
Table 23b Crashes and Casualties by Local Government Area and Severity: <i>Metropolitan Adelaide: Departmental Roads</i>	36
Table 23c Crashes and Casualties by Local Government Area and Severity: <i>Metropolitan Adelaide: All Roads</i>	37
Table 24a Crashes and Casualties by Local Government Area and Severity: <i>Rural: Council Roads</i>	38
Table 24b Crashes and Casualties by Local Government Area and Severity: <i>Rural: Departmental Roads</i>	40
Table 24c Crashes and Casualties by Local Government Area and Severity: <i>Rural: All Roads</i>	42
Table 25 Top Intersections with highest number of Casualty Crashes 2021	44

Motor Vehicle Type, Movement & Involvement		
Table 26	Motor Vehicles Involved in and Responsible for Crashes by Region and Severity	45
Table 27	Crashes and Casualties by Vehicle Movement of Motor Vehicle Responsible and Severity	46
Table 28	Crashes and Casualties by Pedestrian Responsible, Movement and Severity	46
Table 29	Crashes by Motor Vehicle Type Involved and Severity	47
Speed Involvement		
Table 30	Crashes and Casualties by Speed Involvement and Severity	47
CASUALTIES in 2021		48
Road User		
Table 31	Casualties by Road User Type, Severity, Age & Sex	49
Table 32	Casualties by Unit Type and Severity	50
Table 33	Motor Vehicle Casualties by Position in Vehicle and Severity	50
Seatbelts & Helmets		
Table 34	Casualties by Road User Type, Safety Device and Severity	51
Alcohol		
Table 35	Driver and Motorcycle Rider Casualties with BAC	52
Drugs		
Table 36	Driver and Motorcycle Rider Casualties with Drugs	52
Responsibility		
Table 37a	Road User Involved in and Responsible for Crashes by Age & Sex: <i>Fatal Crashes</i>	53
Table 37b	Road User Involved in and Responsible for Crashes by Age & Sex: <i>Serious Injury Crashes</i>	54
Table 37c	Road User Involved in and Responsible for Crashes by Age & Sex: <i>Minor Injury Crashes</i>	55
Table 37d	Road User Involved in and Responsible for Crashes by Age & Sex: <i>Property Damage Crashes</i>	56
Table 37e	Road User Involved in and Responsible for Crashes by Age & Sex: <i>All Crashes</i>	57
Table 38	Drivers & Motorcycle Riders Involved in and Responsible for Crashes by Licence Type and Severity	58
Table 39a	Drivers & Motorcycle Riders Responsible for Crashes by Licence Type and Age: <i>Fatal Crashes</i>	58
Table 39b	Drivers & Motorcycle Riders Responsible for Crashes by Licence Type and Age: <i>Serious Injury Crashes</i>	59
Table 39c	Drivers & Motorcycle Riders Responsible for Crashes by Licence Type and Age: <i>Minor Injury Crashes</i>	59
Table 39d	Drivers & Motorcycle Riders Responsible for Crashes by Licence Type and Age: <i>Property Damage Crashes</i>	60
Table 39e	Drivers & Motorcycle Riders Responsible for Crashes by Licence Type and Age: <i>All Crashes</i>	60
REFERENCE INFORMATION for South Australia		61
Demographic Data		
Table 40	Estimated Population by Age and Sex	62
Table 41	Licence and Permit Holders by Age and Sex	62
Vehicle Information		
Table 42	Motor Vehicle on Register by Vehicle Type	63
Table 43	Vehicle Kilometres Travelled by Vehicle Type	63

Key Points 2021

- A total of 13,149 crashes were processed for South Australia in 2021 - 94 fatal crashes, 716 serious injury crashes, 3,546 minor injury crashes and 8,793 property damage crashes. This resulted in 99 lives lost, 827 serious injuries and 4,442 minor injuries.

The 99 lives lost that occurred in 2021 resulted in a fatality rate per 100 000 population of 5.6, above the national figure of 4.4.

- **Greater Adelaide area** - The number of fatal crashes resulting in lives lost in the Greater Adelaide area increased in 2021 compared to 2020, as did the number of serious injury crashes. There were 40 fatal crashes, four more than the previous year and 3% greater than the previous five year average.

There were 523 serious injury crashes in 2021, this is a 22% increase from the 428 in 2020 and is 39% above the previous five year average of 375 each year.

Within Greater Adelaide, 25% of fatal crashes in 2021 were at intersections, down from 31% in 2020.

- **Rural areas** - Fatal crashes resulting in lives lost have increased in rural areas in 2021 compared to 2020. There were 54 fatal crashes in rural areas in 2021, 5 more than 2020 and the previous five year average.

Serious injury crashes declined slightly from 196 in 2020 to 193 in 2021, down also on the previous five year average of 214 each year.

In rural areas, 72% of fatal crashes were single vehicle crashes, such as a vehicle rolling over or hitting objects such as trees. This is an increase from 49% in 2020.

- **Young road users** - The number of 16-19 year olds who lost their life declined from 11 in 2020 to nine in 2021, the previous five year average was eight lives lost. The number of lives lost in the 20-24 year old range fell from 13 in 2020 to 10 in 2021, the previous five year average was 11 lives lost each year.

The number of 16-24 year olds seriously injured increased from 129 in 2020 to 185 in 2021, this is above the five year average of 133 for 16-24 year olds seriously injured each year.

- **Older road users** - The number of people aged 70 or over who lost their life remained the same in 2021, 18 people in this age group lost their life in 2021, this is the same number as 2020 below the previous five year average of 22 lives lost each year.

Serious injuries increased from 90 in 2020 to 95 in 2021, the previous five year average is 96 serious injuries for this age group each year.

- **Drivers/passengers** - Drivers (incl. heavy vehicle drivers) who lost their lives declined from 47 in 2020 to 46 in 2021. Passengers who lost their life increased from 15 in 2020 to 16 in 2021. The previous five year average shows 47 drivers and 15 passengers lost their life each year.

Drivers (incl. heavy vehicle drivers) seriously injured increased from 293 in 2020 to 332 in 2021. Passengers seriously injured also increased from 96 in 2020 in 119 in 2021. The previous five year average shows 311 drivers and 110 passengers were seriously injured each year.

- **Motorcyclists** - The number of lives lost decreased from 21 in 2020 to 17 in 2021. The five year average of motorcyclists killed is 16 per year.

Serious injuries declined slightly from 194 in 2020 to 19 in 2021, above the previous five year average of 143 serious injuries each year.

- **Pedestrians** - The number of lives lost increased from eight in 2020 to 14 in 2021. This number is above the average of 12 deaths per year over the previous five years.

Serious injuries also increased for pedestrians from 57 in 2020 to 84 in 2021, this is also above the five year average of 60 pedestrians seriously injured each year.

- **Cyclists** - The number of lives lost increased two in 2020 to five in 2021. The five year average of cyclists killed is five per year.

The number of cyclists seriously injured has also increased from 73 in 2020 to 94 in 2021. The five year average of cyclists seriously injured is 62 per year.

- **Seatbelts** - 27% of drivers and passengers who lost their life in 2021 were not wearing a seatbelt at the time of the crash. This is a decrease compared to 30% in 2020 and slightly below the previous five year average of 28%.

Summary Data for 2021

	Number
CRASHES	
Fatal Crashes	94
Serious Injury Crashes	716
Minor Injury Crashes	3 546
Property Damage Crashes	8 793
TOTAL	13 149
CASUALTIES	
Fatalities	99
Serious Injuries	827
Minor Injuries	4 442
TOTAL	5 368
OTHER DATA	
Vehicles on motor vehicle register¹	1 526 782
Fatalities per 10 000 vehicles	0.65
Serious injuries per 10 000 vehicles	5.42
Casualties per 10 000 vehicles	35.16
Licence holders²	1 309 253
Driver/rider fatalities per 10 000 licence holders	0.48
Driver/rider serious injuries per 10 000 licence holders	3.98
Driver/rider casualties per 10 000 licence holders	28.04
Population³	1 773 243
Fatalities per 100 000 population	5.58
Serious Injuries per 100 000 population	46.64
Casualties per 100 000 population	302.72

¹ Excludes trailers, caravans, plant and equipment. Source: Registration and Licensing, Department for Infrastructure and Transport, June 2021.

² No. of individual licence holders (inc. learner's permit). Source: Registration and Licensing, Department for Infrastructure and Transport, December 2021.

³ Estimated resident population. Source: *Australian Demographic Statistics*, ABS, cat. no. 3101.0, June 2020.

Preface

This publication presents information compiled from police reported crashes in South Australia for 2021 and is the fifty third edition in an annual series that commenced with 1967 data.

How crashes are reported and processed?

When a reportable road crash occurs, South Australia Police (SAPOL) collect the data which is entered into SAPOL's SHIELD system. The reports are then electronically forwarded to the Road Safety section of the Department for Infrastructure and Transport (the Department) for further processing and geocoding. The information is checked for accuracy and consistency to ensure the reliability of any published statistics. Processed crash data is stored in the Department's 'Road Crash Database' (TARS).

Serious injury data reflects on-going improvements made by SAPOL to its data collection methods. Historically, the decision to report a road crash casualty as being 'admitted to hospital' was sometimes made by the police at the scene of the crash when a person was taken away by ambulance. From 2008, SAPOL officers started to verify whether injured persons were formally admitted to hospital rather than just being treated as a casualty at hospital and released. This improved classification of seriously injured casualties was utilised in an increasing proportion of collision reports until complete coverage occurred in 2012.

The data presented in this report is for information purposes only and should be used with care before drawing conclusions not contained in this report. Details in this publication may differ from information previously released or published due to the database continually being updated with new information. Road crash information contained in this publication is derived from TARS. Please note, data reported within this publication is correct at the time of extraction. Due to continual quality assurances and process updates historical data may not match previous publications.

Scope

Note: The following changes were made to the Property Damage Only (PDO) definition in 2003, 2013, 2016 and 2017:

1 January 2017

The Department processed all casualty crashes and only 'property damage' crashes involving any type of vehicle towed away from the crash or where involving:

- a motorcycle (includes quad bikes), motor scooter, e-scooter, motorised bicycle and regular bicycle, regardless of whether another vehicle was involved;
- any type of heavy vehicle with a GVML > 4.5 tonnes or a bus with 13 seats or more;
- a train or tram colliding with a vehicle or pedestrian within the road related area; and
- any type of vehicle colliding with a pedestrian.

1 December 2016

The Department processed all 'property damage' crashes for the month of December 2016 in accordance with the Australian Transport Safety Bureau (ATSB) guidelines.

Prior to 1 December 2016, the crash statistics included in this publication were confined to those crashes which:

- were reported to SA Police (SAPOL) (excludes SAPOL online crash reporting);
- occurred on a road, defined in the Road Traffic Act 1961;
- were defined by the ATSB publication "Guidelines For Determining Events as Road Crashes in Australia" (published March 2000);
- involved at least one moving vehicle;
- involved at least one person being killed or injured, vehicle towed away, or total property damage of \$5000 or greater; and
- included all crashes involving bicycles, motorcycles and scooters (irrespective of damage value or injury level).

1 January 2013

The Department only processed 'property damage' crashes with an aggregated damage value of \$5000 or greater, or where a vehicle was towed away.

1 July 2003

The Department only processed 'property damage' crashes where the value was \$3000, or where a vehicle was towed away. Preceding this, the 'property damage' crash value was \$1000 introduced on 1 January 1998.

Related Publications

All monthly and annual statistical reports are available from the Department's Road Safety website https://towardszerotogether.sa.gov.au/road_crash_facts

Acknowledgements

Acknowledgement is extended to the South Australia Police for the supply of reported road crash reports.

Notes

From 1 January 2013, new ABS boundaries were introduced into the coding corresponding to the Greater Adelaide City Statistical Area, replacing the previous metro/rural boundaries. As a consequence, Mt Barker and Adelaide Hills Council, part of Adelaide Plains Council, Barossa and Light Councils are now incorporated into Metropolitan Adelaide.

Definitions & Explanatory Notes

BAC	Blood Alcohol Concentration (mg/100mL).
Bicycle	Any two or three wheeled device operated by pedals and propelled by human power. Includes motorised bicycles.
Bicycle Rider	A person occupying the controlling position of a bicycle.
Bicyclist	A bicycle rider or passenger, often referred to as a cyclist.
Driver	A controller of a motor vehicle other than a motorcycle or bicycle.
Drug	Methamphetamine, MDMA (Ecstasy) and/or THC (cannabis).
Casualty	Any person killed or injured as a result of a crash.
Casualty Crash	A Crash where someone has been killed or injured as a result of the crash.
Crash Type Code (DCA)	Definition for Coding Accidents - a coding system to describe the events involved in a crash. The 'crash-type' is based on the traffic movements leading up to the crash. Participant intent, as well as actual movement, is used in determining the DCA crash type.
Fatal Crash	A crash for which there is at least one fatality.
Fatality/Life lost	A person who dies within 30 days of a crash as a result of injuries sustained in that crash.
Heavy Vehicle	Heavy vehicle includes the following vehicle types: Rigid truck, Semi-Trailer, Bus, B Double and other defined special vehicles.
Intersection Crash	A crash for which the first impact occurs at or within a 20 metre radius of an intersection.
Metropolitan	Greater Adelaide City Statistical Area. Comprises of the following Local Government Areas: Adelaide, Burnside, Campbelltown, Charles Sturt, Holdfast Bay, Marion, Mitcham, Norwood Payneham & St Peters, Onkaparinga, Playford, Port Adelaide & Enfield, Prospect, Salisbury, Tea Tree Gully, Unley, Walkerville, West Torrens, Adelaide Hills, Mount Barker, Gawler and part of Barossa, Light and Adelaide Plains councils.
Mid-block Crash	A crash that occurs between two intersections.
Minor Injury	A person who sustains injuries requiring medical treatment, either by a doctor or in a hospital, as a result of a road crash, who was not admitted to hospital and who does not die as a result of those injuries within 30 days of the crash.
Minor Injury Crash	A crash in which at least one person sustains injury but no person is seriously injured or dies within 30 days of the crash.
Motor Vehicle	Any road vehicle which is mechanically or electrically powered but not operated on rails.
Motorcycle	Any mechanically or electrically propelled two or three wheeled vehicles with or without side-car; includes solo motorcycle, motorcycle with sidecar, motor scooter, mini-bike, and quad bikes.
Motorcycle Rider	A person occupying the controlling portion of a motorcycle.
Motorcyclist	Motorcycle rider or pillion passenger.
Other Road User	Occupants/controllers of animal drawn vehicles, ridden animals, railway vehicles, tram, and other defined special vehicle.
Other Vehicle Type	Animal drawn vehicles, ridden animals, railway vehicles, and tram.
Passenger	Any person, other than the controller, who is in, on, or falling from a road vehicle at the time of the crash, provided a portion of the person is in/on the road vehicle. It does not include those that are boarding or alighting a road vehicle at the time of the crash.
Passenger Vehicle	Includes all cars and car derivatives including 4WDs, vans, utilities and station wagons. Excludes heavy vehicles, light trucks (≤ 4.5 tonnes), motorcycles and bicycles.
Pedestrian	Any person who is standing, walking, playing, lying on the road or alighting or boarding a road vehicle at the time of the crash. It does not include those that have fallen from a vehicle. Also includes riders and passengers of motorised wheelchairs/wheelchairs, small wheeled vehicles and gopher users.

OFFICIAL

Pillion Passenger	A passenger on but not controlling a motorcycle.
Property Damage Crash	A crash resulting in property damage in excess of the prescribed amount in which no person is injured or dies within 30 days of the crash.
Road Crash	Any apparent unpremeditated event reported to the police and resulting in death, injury or property damage in excess of the prescribed amount, and attributed to the movement of the road vehicle on a road.
Road User	Any person who is a pedestrian, rider, or the occupant of a road vehicle.
Rural	Area outside of metropolitan Adelaide. Comprises of the following local government areas: Ceduna, Cleve, Elliston, Franklin Harbor, Kimba, Lower Eyre Peninsula, Port Lincoln, Streaky Bay, Tumby Bay, Whyalla, Cooper Pedy, Finders Ranges, Port Augusta, Roxby Downs, Alexandrina, Kangaroo Island, Victor Harbor, Yankalilla, Grant, Mount Gambier, Naracoorte Lucindale, Robe, Tatiara, Wattle Range, Berri and Barmera, Karoonda East Murray, Loxton Waikerie, Mid Murray, Murray Bridge, Renmark Paringa, Southern Mallee, The Coorong, Barunga West, Clare & Gilbert Valleys, Copper Coast, Goyder, Mount Remarkable, Northern Areas, Orroroo/Carrieton, Peterborough, Port Pirie, Wakefield, Yorke Peninsula and part of Barossa, Light and Adelaide Plains councils.
Serious Casualty	A fatality/live lost or serious injury.
Serious Injury	A person who sustains injuries and is admitted to hospital for a minimum period of an overnight stay as a result of a road crash and who does not die as a result of those injuries within 30 days of the crash.
Serious Injury Crash	A non-fatal crash in which at least one person is seriously injured.
Vehicle Occupant	Driver or passenger within a motor vehicle.

Speed definition

A motor vehicle is assessed as having been speeding if it satisfies the conditions described below:

- a) The vehicle's controller (driver or rider) was charged with a speeding offence; or the vehicle was described by police as travelling at excessive speed; or the stated speed of the vehicle was in excess of the speed limit; or the vehicle weight or the speed of the vehicle was faster than that allowed for the licence class of the driver or rider, or the vehicle weight, OR
- b) The vehicle was performing a manoeuvre characteristic of excessive speed, that is:
 - while on a curve the vehicle jack-knifed, skidded, slid or the controller lost control; or
 - the vehicle ran off the road while negotiating a bend or turning a corner and the controller was not distracted by something or disadvantaged by drowsiness or sudden illness; and was not swerving to avoid another vehicle, animal or object and the vehicle did not suffer equipment failure.

This is based on Transport for NSW criteria for determining whether or not a crash is to be considered as having involved speed as a contributing factor.

CRASH & CASUALTY TRENDS

- Historical Data
- Fatality Rates
- Interstate and International Comparisons
- Causes of Death
- Road User Type
- Age & Sex
- Region

Table 1: Trends in South Australia, 1995 - 2021

Year	Crashes						Casualties					Vehicles on Register ¹ (‘000)	Licence Holders ² (‘000)	Population ³ (‘000)	Vehicle Kilometres Travelled ⁴ (‘000 000)	Fatalities per			100, (M) Vehicle Kilometres Travelled
	Fatal Crashes	Serious Injury Crashes	Minor Injury Crashes	TOTAL Casualty Crashes	Property Damage Crashes	ALL Crashes	Fatalities	Serious Injuries	Minor Injuries	ALL Casualties	10,000 Vehicles					10,000 Licence Holders ⁵	100,000 Population		
1995	164	1185	5097	6446	32844	39290	182	1521	6638	8341	945	975	1469	13195	1.93	0.98	12.39	1.38	
1996	162	1324	5023	6509	32432	38941	181	1720	6775	8676	959	979	1474	-	1.89	1.09	12.28	-	
1997	124	1168	5138	6430	32442	38872	149	1509	6716	8374	969	995	1479	-	1.54	0.80	10.07	-	
1998	152	1225	5551	6928	32664	39592	168	1566	7345	9079	995	995	1487	13974	1.69	0.85	11.30	1.20	
1999	132	1238	6047	7417	34287	41704	153	1607	8071	9831	1010	1012	1493	13081	1.52	0.85	10.25	1.17	
2000	151	1229	6433	7813	33172	40985	166	1627	8501	10294	1011	1025	1498	13153	1.64	1.04	11.08	1.26	
2001	137	1245	6351	7733	33041	40774	154	1603	8497	10254	1023	1045	1502	15085	1.51	0.85	10.25	1.02	
2002	138	1199	6249	7586	32525	40111	154	1538	8382	10074	1045	1047	1522	14855	1.47	0.88	10.12	1.04	
2003	135	1169	5786	7090	23220	30310	156	1470	7597	9223	1034	1052	1527	14963	1.51	0.85	10.21	1.04	
2004	128	1071	5521	6720	15548	22268	139	1331	7297	8767	1049	1072	1534	15241	1.32	0.93	9.06	0.91	
2005	126	994	5106	6226	14945	21171	147	1296	6629	8072	1065	1094	1542	14533	1.38	0.84	9.53	1.01	
2006	104	1092	5009	6205	14513	20718	117	1358	6489	7964	1085	1042	1555	15535	1.08	0.77	7.53	0.75	
2007	108	1090	5295	6493	15230	21723	125	1368	6961	8454	1107	1073	1585	14212	1.13	0.62	7.89	0.88	
2008	87	996	5615	6698	15223	21921	99	1217	7174	8490	1171	1094	1602	-	0.85	0.56	6.18	-	
2009	104	908	5213	6225	15506	21731	119	1108	6618	7845	1201	1135	1623	-	0.99	0.65	7.33	-	
2010	105	886	5424	6415	15877	22292	118	1050	6907	8075	1226	1136	1645	14615	0.96	0.64	7.17	0.81	
2011	95	781	5471	6347	16970	23317	103	932	6896	7931	1265	1141	1657	-	0.81	0.53	6.22	-	
2012	86	637	5377	6100	16729	22829	94	761	6624	7479	1285	1155	1655	16313	0.73	0.56	5.68	0.58	
2013	89	666	5037	5792	10883	16675	97	790	6290	7177	1305	1186	1671	-	0.74	0.51	5.80	-	
2014	96	594	5005	5695	10467	16162	108	711	6163	6982	1322	1196	1686	16715	0.82	0.53	6.41	0.65	
2015	96	657	4616	5369	10063	15432	102	759	5800	6661	1349	1204	1699	-	0.76	0.52	6.00	-	
2016	77	574	4562	5213	11562	16775	86	692	5787	6565	1419	1225	1708	16915	0.61	0.51	5.03	0.51	
2017	93	533	4374	5000	8237	13237	100	622	5515	6237	1442	1238	1723	-	0.69	0.57	5.80	-	
2018	75	485	4393	4953	8646	13599	80	576	5468	6124	1443	1245	1736	17817	0.55	0.39	4.61	0.45	
2019	110	729	3937	4776	8188	12964	114	833	5084	6031	1460	1257	1751	-	0.78	0.41	6.51	-	
2020	85	624	3259	3968	7566	11534	93	715	4069	4877	1485	1283	1770	16392	0.63	0.51	5.25	0.57	
2021	94	716	3546	4356	8793	13149	99	827	4442	5368	1526	1309	1773	-	0.65	0.48	5.58	0.60	

¹ At June 2021. Excludes tractors, trailers, caravans, plant and equipment. Source: TRUMPS database, Registration & Licensing Section, Department for Infrastructure and Transport.

² At December 2021. Source: TRUMPS database, Registration & Licensing Section, Department for Infrastructure and Transport.

³ Population as of June 2021. Source: Australian Bureau of Statistics, *Australian Demographic Statistics*, cat.no. 3101.0.

⁴ Travel for the year ended June 2020. Source: Australian Bureau of Statistics, *Survey of Motor Vehicle Use*, cat. no. 9208.0.

⁵ Licence holder fatality rate is based on driver and rider lives lost only.

Note:

Changes were made to the Property Damage Only (PDO) definition in 1998, 2003, 2013, 2016 and 2017. Refer to **Scope**, page 5 for full details.

Figure 1: Data Trends in South Australia, 1995 - 2021

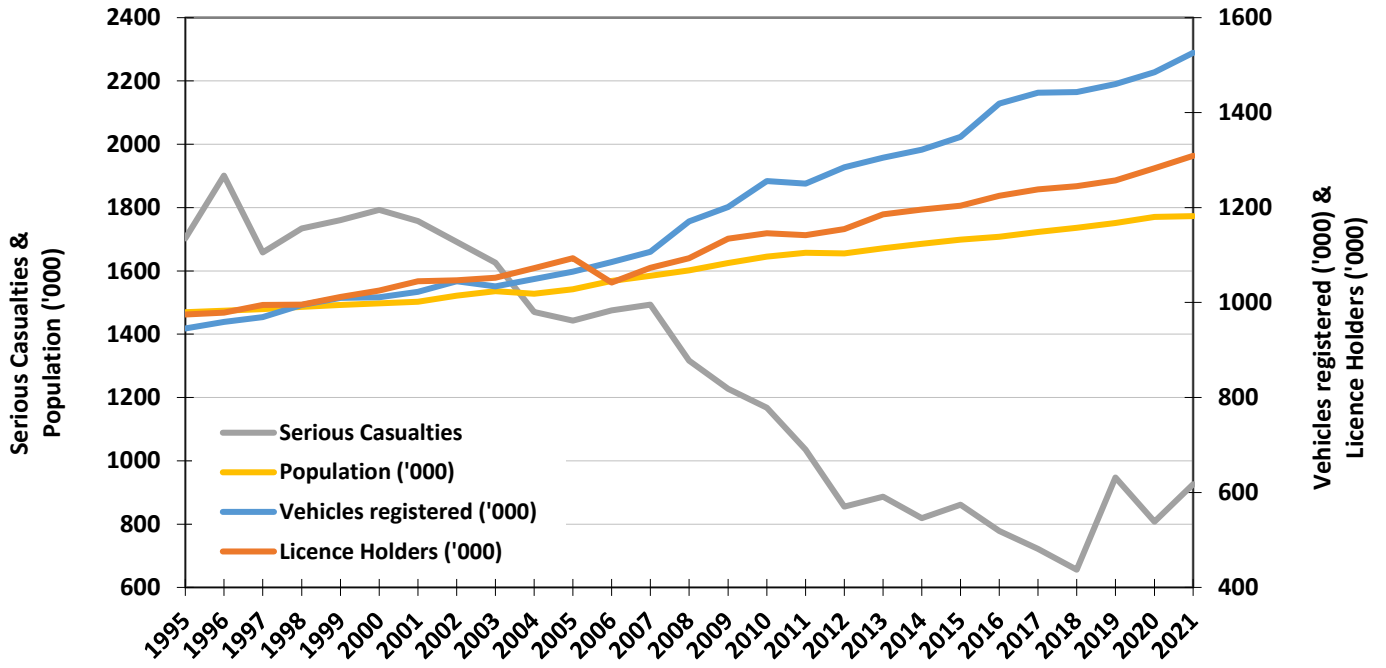
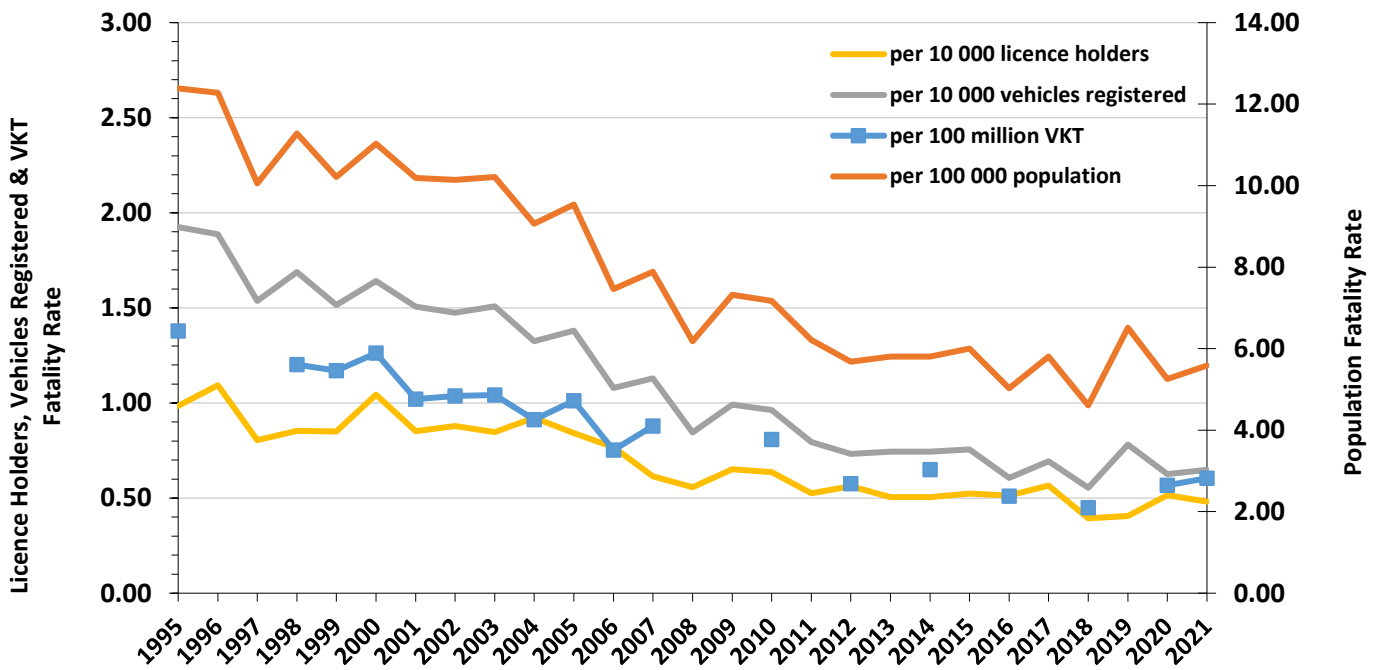


Figure 2: Fatality Rates in South Australia, 1995 - 2021



Note: Changes were made to the Property Damage Only (PDO) definition in 1998, 2003, 2013, 2016 and 2017. Refer to **Scope**, page 5 for full details.

Table 2: Comparison with other Australian Jurisdictions¹, 2021

	Fatalities ¹	Vehicles on register ² ('000)	Population ³ ('000)	Fatalities per 10 000 vehicles	Fatalities per 100 000 population
SOUTH AUSTRALIA	99	1,527	1,773	0.65	5.59
New South Wales	271	5,892	8,189	0.46	3.32
Victoria	232	5,157	6,649	0.45	3.46
Queensland	274	4,304	5,221	0.64	5.29
Western Australia	166	2,315	2,682	0.72	6.23
Tasmania	35	516	541	0.68	6.47
Australian Capital Territory	11	318	432	0.35	2.55
Northern Territory	35	163	246	2.15	14.22
AUSTRALIA	1,123	20,192	25,739	0.56	4.37

Table 3a: Road Crash Fatalities by Age Group compared with Deaths Registered in South Australia, 2020

Age Groups	Deaths Registered in South Australia ⁴	Road Fatalities ⁵	
		Number	% of All Deaths
0-14	68	2	3%
15-19	42	10	24%
20-24	44	10	23%
25-29	60	4	7%
30-34	73	7	10%
35-39	90	6	7%
40-49	361	6	2%
50-59	817	17	2%
60-69	1,479	19	1%
70+	10,572	18	0%
Unknown	0	0	0%
TOTAL	13,606	99	1%

Table 3b: Age of Passenger Vehicles Involved in Serious Casualty Crashes, last five years (2017 - 2021)

Passenger Vehicle Age Group	2017	2018	2019	2020	2021
0-4	143	87	154	141	134
5-9	158	139	187	169	159
10-14	164	144	182	174	200
15-19	151	119	199	145	195
20+	100	105	124	110	136
Unknown	17	6	12	3	0
TOTAL	733	600	858	742	824

¹ Australian data based on information published by the Bureau of Infrastructure, Transport and Regional Economics (BITRE) for December 2021.

² Australian figures (except SA) are as at June 2021. Source: Australian Bureau of Statistics, *Motor Vehicle Census Australia*, cat. no. 9309.0. These figures may not agree with registration statistics for individual States and Territories. Data for SA sourced from TRUMPS, as of June 2021.

³ Population as of June 2021. Source: Australian Bureau of Statistics, *Australian Demographic Statistics*, cat.no. 3101.0.

⁴ Source: Australian Bureau of Statistics, *Deaths, Australia 2019*, cat.no. 3302.0.

⁵ Source: The Department's TARS road crash database.

Note:

Changes were made to the Property Damage Only (PDO) definition in 1998, 2003, 2013, 2016 and 2017. Refer to **Scope**, page 5 for full details.

Table 4: Casualties by Road User Type and Severity, 1995 - 2021

Year	Vehicle Occupant						Motorcyclist						Pedestrian			Bicyclist			Other Road User			ALL ROAD USERS		
	Driver			Passenger			Rider			Pillion Passenger			F	SI	MI	F	SI	MI	F	SI	MI	F	SI	MI
	F	SI	MI	F	SI	MI	F	SI	MI	F	SI	MI												
1995	84	648	3571	36	432	1823	12	153	359	0	22	50	40	186	411	8	80	421	2	0	3	182	1521	6638
1996	92	779	3615	40	522	1922	15	189	365	3	14	33	24	153	428	7	59	403	0	4	9	181	1720	6775
1997	67	712	3724	44	408	1749	13	144	353	1	15	31	20	147	427	4	79	427	0	4	5	149	1509	6716
1998	72	779	4213	44	383	1972	13	157	314	0	20	26	35	142	402	4	79	408	0	6	10	168	1566	7345
1999	71	749	4749	38	456	2173	15	123	277	0	14	20	26	178	419	3	84	425	0	3	8	153	1607	8071
2000	91	739	5132	37	490	2191	16	158	323	0	12	25	21	151	409	1	75	412	0	2	9	166	1627	8501
2001	76	809	5023	32	419	2298	13	156	300	1	13	21	26	143	426	6	58	417	0	5	12	154	1603	8497
2002	72	753	5012	39	434	2196	20	153	321	1	7	22	19	129	425	3	59	402	0	3	4	154	1538	8382
2003	77	783	4663	44	343	1896	12	144	280	1	19	27	17	115	359	5	63	367	0	3	5	156	1470	7597
2004	80	687	4320	23	316	1915	20	157	288	1	9	20	12	104	369	3	57	382	0	1	3	139	1331	7297
2005	74	646	3943	39	342	1598	18	125	276	2	11	19	11	111	374	3	61	418	0	0	1	147	1296	6629
2006	58	670	3772	20	302	1586	22	178	322	1	17	22	12	111	365	4	80	419	0	0	3	117	1358	6489
2007	58	685	4011	37	347	1762	8	162	409	0	10	17	17	108	330	5	56	429	0	0	3	125	1368	6961
2008	45	582	4211	24	264	1720	16	176	435	1	8	23	12	120	334	1	67	447	0	0	4	99	1217	7174
2009	60	549	4010	32	243	1479	14	159	389	1	9	15	10	89	279	2	59	442	0	0	4	119	1108	6618
2010	57	500	4205	24	211	1574	16	146	388	0	7	20	16	103	245	5	82	470	0	1	5	118	1050	6907
2011	40	445	4236	22	193	1505	20	143	361	1	9	19	17	77	269	3	61	499	0	4	7	103	932	6896
2012	52	350	4027	14	137	1431	13	113	339	2	6	14	10	77	296	3	78	516	0	0	1	94	761	6624
2013	48	384	3860	17	122	1326	12	129	369	0	5	18	15	87	231	5	63	486	0	0	0	97	790	6290
2014	52	320	3779	24	135	1225	11	127	417	0	3	20	17	62	227	4	64	495	0	0	0	108	711	6163
2015	52	358	3444	17	132	1247	11	139	386	0	6	13	18	50	205	4	74	505	0	0	0	102	759	5800
2016	41	325	3495	23	140	1200	8	105	390	0	4	9	9	66	245	5	52	448	0	0	0	86	692	5787
2017	46	313	3351	11	121	1082	24	105	377	0	3	9	17	41	246	2	39	450	0	0	0	100	622	5515
2018	41	277	3317	16	87	1079	10	97	391	0	6	11	6	58	233	7	51	435	0	0	2	80	576	5468
2019	60	349	3122	9	108	1048	17	196	294	0	5	10	21	80	220	7	94	383	0	1	7	114	833	5084
2020	47	293	2526	15	96	784	19	189	256	2	5	12	8	57	153	2	73	336	0	2	2	93	715	4069
2021	46	332	2791	16	119	854	17	189	296	1	4	5	14	84	180	5	93	308	0	6	8	99	827	4442

F - Fatality/Life lost, SI - Serious Injury, MI - Minor Injury

Note:

Changes were made to the Property Damage Only (PDO) definition in 1998, 2003, 2013, 2016 and 2017. Refer to **Scope**, page 5 for full details.

Table 5: Casualties by Age Group and Severity, 1995 - 2021

Year	0-15			16-19			20-24			25-29			30-39			40-49			50-59			60-69			70+			Unknown			ALL CASUALTIES		
	F	SI	MI	F	SI	MI	F	SI	MI	F	SI	MI	F	SI	MI	F	SI	MI	F	SI	MI	F	SI	MI	F	SI	MI	F	SI	MI	F	SI	MI
1995	14	132	597	22	225	884	24	255	1094	16	168	716	39	226	1056	18	154	807	10	94	450	19	69	308	20	99	330	0	99	396	182	1521	6638
1996	12	162	642	18	230	931	27	279	1002	21	203	708	26	267	1155	23	160	824	12	98	475	15	101	286	26	118	362	1	102	390	181	1720	6775
1997	8	149	603	19	194	840	21	233	973	13	149	718	28	255	1127	11	150	866	11	91	524	12	79	307	24	110	350	2	99	408	149	1509	6716
1998	10	134	623	18	251	979	17	212	1099	12	172	820	25	225	1207	21	181	889	12	103	555	14	66	315	37	120	346	2	102	512	168	1566	7345
1999	14	147	662	21	218	987	23	222	1056	11	136	904	22	225	1337	18	172	996	11	110	620	13	81	347	20	118	343	0	178	819	153	1607	8071
2000	11	121	547	26	212	1115	16	229	1180	23	158	893	21	225	1427	21	196	1042	10	113	698	14	81	396	24	111	376	0	181	827	166	1627	8501
2001	10	101	519	16	223	1092	14	210	1168	16	159	887	32	260	1405	14	192	1120	11	128	724	13	72	346	28	80	388	0	178	848	154	1603	8497
2002	16	107	461	16	198	1142	18	213	1159	17	164	875	28	241	1385	24	177	1088	10	104	680	5	54	349	20	108	416	0	172	827	154	1538	8382
2003	11	81	434	21	189	993	20	225	1060	11	147	750	26	244	1282	19	182	1081	18	119	701	10	62	329	20	100	331	0	121	636	156	1470	7597
2004	7	64	423	7	199	905	27	212	1045	17	135	652	26	207	1204	18	169	961	17	98	626	11	56	351	9	84	369	0	107	761	139	1331	7297
2005	8	86	349	18	173	874	28	195	920	19	115	616	16	205	1099	19	157	956	11	121	626	11	77	341	17	94	315	0	73	533	147	1296	6629
2006	3	74	441	12	181	707	17	186	932	11	129	610	17	225	1028	23	181	901	14	122	681	10	70	355	10	88	344	0	102	490	117	1358	6489
2007	6	60	402	18	173	804	16	210	970	14	137	703	14	214	1102	13	167	982	10	139	691	5	73	352	29	100	388	0	95	567	125	1368	6961
2008	5	51	439	16	157	812	12	177	921	10	114	700	19	211	1156	9	164	1064	13	110	797	4	75	434	11	91	365	0	67	486	99	1217	7174
2009	4	60	393	20	138	765	22	138	827	10	124	682	17	179	1120	20	132	1040	12	112	728	2	81	417	12	94	320	0	50	326	119	1108	6618
2010	5	49	397	19	110	737	12	131	846	5	121	740	16	145	1156	22	155	1013	17	112	879	8	72	406	14	120	381	0	35	352	118	1050	6907
2011	4	43	388	6	94	694	5	127	937	9	95	688	22	146	1177	22	141	1055	12	106	833	4	77	460	19	73	390	0	30	274	103	932	6896
2012	3	32	393	7	76	616	10	104	837	7	75	695	9	106	1139	16	112	997	11	91	785	9	70	464	22	73	423	0	22	275	94	761	6624
2013	6	37	349	2	50	569	13	93	757	5	81	692	6	112	1049	20	120	959	12	117	769	9	70	457	24	82	451	0	28	238	97	790	6290
2014	7	26	337	6	80	517	11	90	764	9	71	652	13	99	998	21	122	966	6	93	773	13	54	510	22	57	423	0	19	223	108	711	6163
2015	5	28	381	7	71	525	9	84	687	7	60	594	13	128	925	13	106	826	11	105	789	14	78	442	23	80	431	0	19	200	102	759	5800
2016	5	33	382	3	81	508	12	86	733	9	76	592	11	82	923	15	94	824	3	97	711	5	51	481	23	87	438	0	5	195	86	692	5787
2017	3	26	411	8	43	487	12	56	581	8	54	560	10	81	833	11	83	806	11	88	701	12	60	450	25	110	438	0	21	248	100	622	5515
2018	4	26	382	10	48	447	7	63	606	6	50	549	7	72	904	13	79	785	7	83	743	11	55	470	15	83	425	0	17	157	80	576	5468
2019	3	32	362	9	64	405	12	94	589	6	79	484	20	128	855	15	93	731	13	122	675	7	103	456	29	109	446	0	9	81	114	833	5084
2020	2	30	263	11	52	365	13	77	447	8	70	436	17	112	669	9	96	591	9	104	509	6	81	379	18	90	371	0	3	39	93	715	4069
2021	3	34	316	9	84	392	10	101	541	4	90	460	13	103	749	6	108	577	17	112	568	19	97	412	18	95	393	0	3	34	99	827	4442

F - Fatality/Life lost, SI - Serious Injury, MI - Minor Injury

Note:

Changes were made to the Property Damage Only (PDO) definition in 1998, 2003, 2013, 2016 and 2017. Refer to **Scope**, page 5 for full details.

Table 6: Casualties by Sex and Severity, 1995 - 2021

Year	Male			Female			Unknown			ALL PERSONS		
	F	SI	MI	F	SI	MI	F	SI	MI	F	SI	MI
1995	130	967	3233	52	553	3355	0	1	50	182	1521	6638
1996	132	1046	3170	48	669	3571	1	5	34	181	1720	6775
1997	98	947	3173	51	554	3488	0	8	55	149	1509	6716
1998	111	941	3277	55	605	3897	2	20	171	168	1566	7345
1999	96	965	3715	56	613	4192	1	29	164	153	1607	8071
2000	121	981	3914	45	626	4479	0	20	108	166	1627	8501
2001	113	974	3929	41	621	4504	0	8	64	154	1603	8497
2002	117	961	3951	37	574	4426	0	3	5	154	1538	8382
2003	109	914	3596	47	552	3995	0	4	6	156	1470	7597
2004	111	823	3467	28	507	3808	0	1	22	139	1331	7297
2005	108	831	3284	39	464	3320	0	1	25	147	1296	6629
2006	89	873	3082	28	485	3401	0	0	6	117	1358	6489
2007	94	871	3315	31	497	3621	0	0	25	125	1368	6961
2008	74	758	3369	25	459	3794	0	0	11	99	1217	7174
2009	92	702	3182	27	404	3419	0	2	17	119	1108	6618
2010	75	663	3259	43	386	3635	0	1	13	118	1050	6907
2011	76	584	3278	27	348	3610	0	0	8	103	932	6896
2012	72	499	3150	22	262	3464	0	0	10	94	761	6624
2013	68	502	2940	29	288	3338	0	0	12	97	790	6290
2014	76	472	2922	32	239	3239	0	0	2	108	711	6163
2015	66	502	2773	36	256	3021	0	1	6	102	759	5800
2016	56	430	2800	30	262	2975	0	0	12	86	692	5787
2017	80	391	2689	20	231	2816	0	0	10	100	622	5515
2018	80	391	2689	20	231	2816	0	0	10	100	622	5515
2019	86	570	2427	28	263	2640	0	0	17	114	833	5084
2020	67	490	2073	26	225	1983	0	0	13	93	715	4069
2021	76	556	2101	23	271	2327	0	0	14	99	827	4442

F - Fatality/Life lost, SI - Serious Injury, MI - Minor Injury

Note:

Changes were made to the Property Damage Only (PDO) definition in 1998, 2003, 2013, 2016 and 2017. Refer to **Scope**, page 5 for full details.

Table 7: Crashes and Casualties by Region¹ and Severity, 1995 - 2021

Year	Metropolitan Adelaide ¹									Rural South Australia ¹								
	Crashes					Casualties				Crashes					Casualties			
	Fatal Crashes	Serious Injury Crashes	Minor Injury Crashes	Property Damage Crashes	ALL CRASHES	Fatalities	Serious Injuries	Minor Injuries	CASUALTIES	Fatal Crashes	Serious Injury Crashes	Minor Injury Crashes	Property Damage Crashes	ALL CRASHES	Fatalities	Serious Injuries	Minor Injuries	CASUALTIES
1995	77	677	4120	27726	32600	77	817	5152	6046	87	509	978	5122	6696	105	704	1486	2295
1996	68	700	4031	27232	32031	73	861	5206	6140	94	625	991	5194	6904	108	860	1568	2536
1997	52	665	4199	27194	32110	55	800	5294	6149	72	504	928	5231	6735	94	711	1410	2215
1998	65	698	4579	27285	32627	70	855	5868	6793	87	527	970	5360	6944	98	710	1474	2282
1999	56	674	5091	28790	34611	61	830	6618	7509	76	564	956	5499	7095	92	777	1454	2323
2000	63	681	5423	28055	34222	68	842	6983	7893	88	548	1009	5117	6762	98	785	1516	2399
2001	64	647	5369	27988	34068	67	768	6950	7785	73	598	983	5051	6705	87	835	1548	2470
2002	49	621	5218	27582	33470	54	754	6743	7551	89	578	1031	4942	6640	100	784	1639	2523
2003	57	585	4839	19316	24797	62	731	6188	6981	78	584	947	3902	5511	94	739	1409	2242
2004	61	577	4583	12713	17934	64	692	5903	6659	67	494	938	2835	4334	75	639	1394	2108
2005	47	513	4212	12225	16997	51	620	5300	5971	79	481	894	2720	4174	96	676	1329	2101
2006	50	619	4146	11919	16734	54	730	5159	5943	54	473	863	2594	3984	63	628	1330	2021
2007	45	614	4380	12504	17543	49	722	5565	6336	63	476	915	2726	4180	76	646	1396	2118
2008	40	557	4643	12516	17756	44	649	5766	6459	47	439	972	2707	4165	55	568	1408	2031
2009	36	494	4287	12640	17457	41	565	5314	5920	68	414	926	2866	4274	78	543	1304	1925
2010	44	478	4505	12971	17998	45	531	5632	6208	61	408	919	2906	4294	73	519	1275	1867
2011	41	419	4572	14088	19120	42	472	5603	6117	54	362	899	2883	4198	61	460	1293	1814
2012	29	347	4464	13915	18755	31	384	5378	5793	57	290	913	2814	4074	63	377	1246	1686
2013	41	394	4379	9242	14056	43	459	5375	5877	48	272	658	1641	2619	54	331	915	1300
2014	37	346	4328	8920	13631	38	376	5203	5617	59	248	677	1549	2533	70	335	960	1365
2015	43	391	3916	8613	12963	43	428	4800	5271	53	266	700	1450	2469	59	331	1000	1390
2016	32	339	3881	9886	14138	34	382	4762	5178	45	235	681	1676	2637	52	310	1025	1387
2017	54	322	3703	6977	11056	56	359	4583	4998	39	211	671	1260	2181	44	263	932	1239
2018	24	284	3758	7466	11532	24	323	4572	4919	51	201	635	1180	2067	56	253	896	1205
2019	49	504	3393	7121	11067	49	553	4294	4896	61	225	544	1067	1897	65	280	790	1135
2020	36	428	2773	6531	9768	38	471	3391	3900	49	196	486	1035	1766	55	244	678	977
2021	40	523	3021	7586	11170	40	587	3731	4358	54	193	525	1207	1979	59	240	711	1010

¹ From 2013 onwards, regional boundaries have been adjusted to the new ABS Greater Adelaide Statistical Division - For more information please look at *Preface* and *Definitions & Explanatory Notes*.

Note:

Changes were made to the Property Damage Only (PDO) definition in 1998, 2003, 2013, 2016 and 2017. Refer to *Scope*, page 5 for full details.

Road Crashes in 2021

- Time Distribution
- Crash Types
- Definition for Coding Accidents
- Crash Location
- Top Intersections
- Motor Vehicle Types
- Involvement and Responsibility
- Speed

Table 8: Crashes and Casualties during Holiday Periods by Severity

Period	Crashes				Casualties				
	Fatal Crashes	Serious Injury Crashes	Minor Injury Crashes	Property Damage Crashes	ALL CRASHES	Fatalities	Serious Injuries	Minor Injuries	ALL CASUALTIES
New Year (1 January) (1 Day)	1	1	2	13	17	1	1	4	6
Australia Day Weekend (26 January - 26 January) (1 Days)	0	3	6	16	25	0	3	9	12
Adelaide Cup (6 March - 8 March) (3 Days)	2	8	19	58	87	3	10	26	39
Easter (2 April - 5 April) (4 Days)	2	8	25	50	85	2	10	31	43
Anzac Day Public Holiday (26 April) (1 Day)	0	0	13	8	21	0	0	15	15
Queen's Birthday (12 June - 14 June) (3 Days)	1	6	17	56	80	1	9	22	32
Labour Day (2 October - 4 October) (3 Days)	1	3	20	45	69	1	4	25	30
Christmas Period (24 December - 31 December) (8 Days)	2	14	45	119	180	2	15	59	76
SCHOOL HOLIDAYS									
January (1 January - 26 January) (26 Days)	7	47	233	537	824	7	51	307	365
April (10 April - 26 April) (17 Days)	2	20	141	345	508	2	25	181	208
July (3 July - 18 July) (16 Days)	2	32	132	415	581	2	42	172	216
September (25 September - 10 October) (16 Days)	5	21	127	306	459	5	26	156	187
December (11 December - 31 December) (21 Days)	6	40	180	466	692	6	44	228	278

Table 9a: Casualty Crashes by Time of Day, Day of Week

Time Period	Day of Week							TOTAL
	Monday	Tuesday	Wednesday	Thursday	Friday	Saturday	Sunday	
00:00 - 01:59	7	3	3	8	4	17	25	67
02:00 - 03:59	4	4	5	4	10	13	19	59
04:00 - 05:59	11	11	6	10	12	7	13	70
06:00 - 07:59	39	52	54	62	46	22	13	288
08:00 - 09:59	87	101	100	106	94	59	41	588
10:00 - 11:59	53	71	70	81	71	92	58	496
12:00 - 13:59	68	61	67	60	79	83	78	496
14:00 - 15:59	90	111	102	118	123	66	79	689
16:00 - 17:59	107	127	118	114	113	87	69	735
18:00 - 19:59	58	79	70	70	78	52	48	455
20:00 - 21:59	26	38	33	37	36	46	32	248
22:00 - 23:59	26	12	12	16	42	41	16	165
TOTAL	576	670	640	686	708	585	491	4356

Figure 3: Casualty Crashes by Time of Day, Day of Week

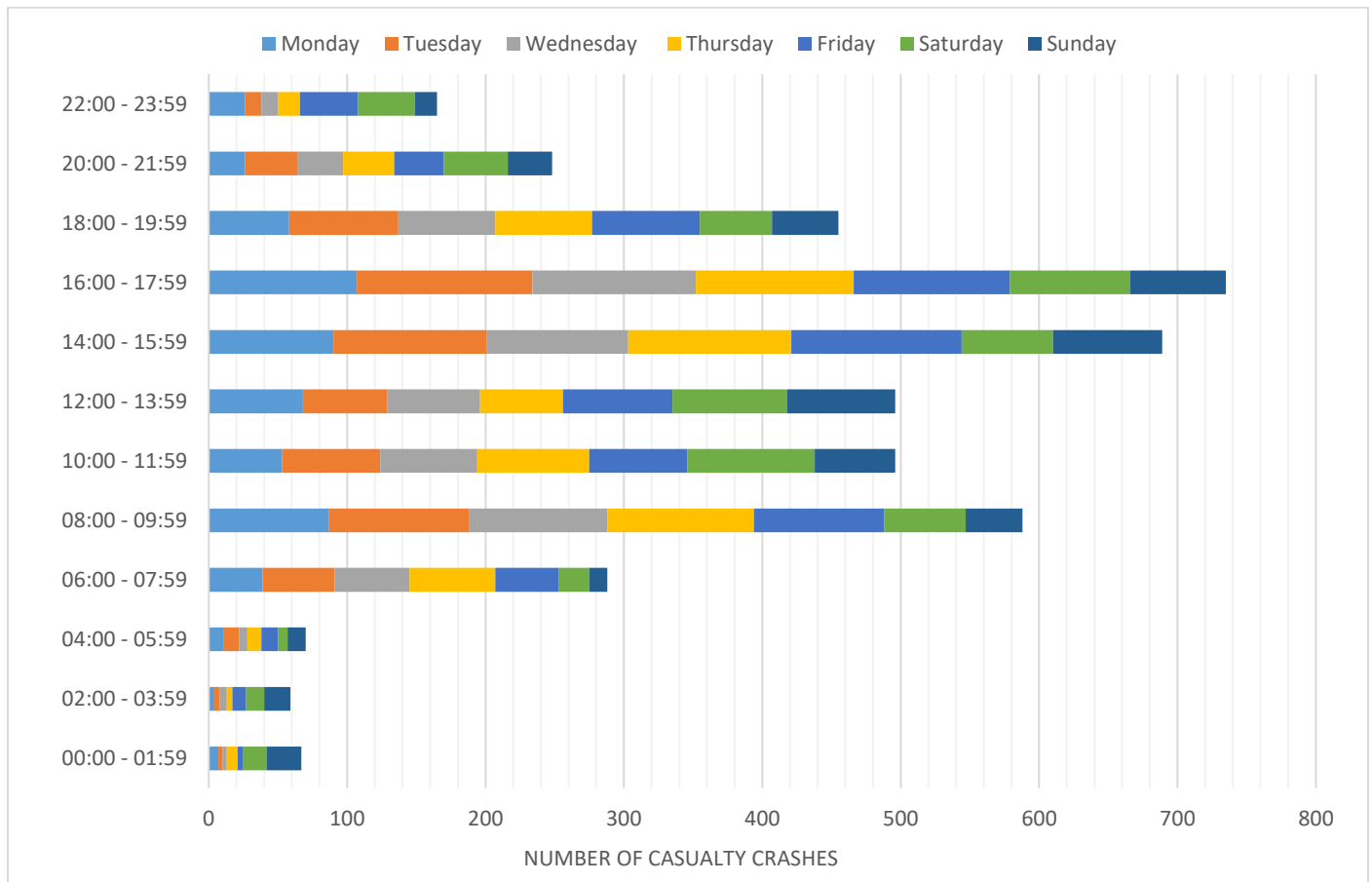


Table 9b: Casualties by Time of Day, Day of Week

Time Period	Day of Week							TOTAL
	Monday	Tuesday	Wednesday	Thursday	Friday	Saturday	Sunday	
00:00 - 01:59	7	3	3	8	4	22	31	78
02:00 - 03:59	5	5	10	4	10	17	22	73
04:00 - 05:59	12	14	9	12	14	12	18	91
06:00 - 07:59	42	59	60	76	58	27	19	341
08:00 - 09:59	113	120	116	131	102	71	50	703
10:00 - 11:59	73	90	87	95	91	121	78	635
12:00 - 13:59	87	72	86	75	99	99	91	609
14:00 - 15:59	121	138	119	143	147	79	102	849
16:00 - 17:59	126	152	135	135	136	106	91	881
18:00 - 19:59	71	91	86	90	87	73	73	571
20:00 - 21:59	31	47	46	45	51	63	47	330
22:00 - 23:59	31	15	20	18	49	56	18	207
TOTAL	719	806	777	832	848	746	640	5368

Table 9c: All Crashes by Time of Day, Day of Week

Time Period	Day of Week							TOTAL
	Monday	Tuesday	Wednesday	Thursday	Friday	Saturday	Sunday	
00:00 - 01:59	31	24	25	20	22	63	79	264
02:00 - 03:59	16	16	19	15	30	38	57	191
04:00 - 05:59	37	26	20	31	41	27	34	216
06:00 - 07:59	132	155	186	178	140	56	42	889
08:00 - 09:59	263	310	320	332	278	129	80	1712
10:00 - 11:59	165	193	198	238	229	226	159	1408
12:00 - 13:59	208	217	215	238	241	248	213	1580
14:00 - 15:59	297	321	317	374	350	206	177	2042
16:00 - 17:59	312	391	336	387	369	247	170	2212
18:00 - 19:59	178	212	199	236	242	178	137	1382
20:00 - 21:59	90	98	92	115	132	125	85	737
22:00 - 23:59	75	38	60	65	108	119	51	516
TOTAL	1804	2001	1987	2229	2182	1662	1284	13149

Table 10: Crashes and Casualties by Month of Year and Severity

Month	Crashes				ALL CRASHES	Casualties			
	Fatal Crashes	Serious Injury Crashes	Minor Injury Crashes	Property Damage Crashes		Fatalities	Serious Injuries	Minor Injuries	ALL CASUALTIES
January	8	60	276	638	982	8	67	365	440
February	9	69	333	735	1146	9	87	419	515
March	12	64	362	796	1234	14	76	442	532
April	8	39	282	654	983	8	49	358	415
May	5	58	309	773	1145	5	63	403	471
June	8	61	284	827	1180	8	70	349	427
July	8	51	241	668	968	9	64	302	375
August	3	78	328	782	1191	4	81	403	488
September	8	72	260	709	1049	8	82	322	412
October	10	54	280	741	1085	10	62	355	427
November	8	49	288	724	1069	9	56	341	406
December	7	61	303	746	1117	7	70	383	460
TOTAL	94	716	3546	8793	13149	99	827	4442	5368

Table 11a: Crashes and Casualties by Crash Type and Severity:
Metropolitan Adelaide

	Crashes					Casualties			
	Fatal Crashes	Serious Injury Crashes	Minor Injury Crashes	Property Damage Crashes	ALL CRASHES	Fatalities	Serious Injuries	Minor Injuries	ALL CASUALTIES
MULTI VEHICLE									
Head On	1	30	47	70	148	1	36	90	127
Rear End	2	41	994	2040	3077	2	47	1203	1252
Side Swipe	1	33	204	1031	1269	1	34	235	270
Right Angle	6	85	688	1609	2388	6	110	861	977
Right Turn	1	59	357	608	1025	1	65	505	571
Hit Parked Vehicle	1	22	121	751	895	1	24	136	161
Sub-total	12	270	2411	6109	8802	12	316	3030	3358
SINGLE VEHICLE									
Hit Fixed Object	13	116	306	1104	1539	13	132	374	519
Hit Pedestrian	11	69	143	125	348	11	70	156	237
Hit Animal	0	8	12	48	68	0	8	12	20
Hit Object on Road	0	1	3	26	30	0	1	3	4
Roll Over	4	56	120	86	266	4	57	127	188
Left Road Out of Control	0	1	8	36	45	0	1	8	9
Other	0	2	18	52	72	0	2	21	23
Sub -total	28	253	610	1477	2368	28	271	701	1000
TOTAL	40	523	3021	7586	11170	40	587	3731	4358

Table 11b: Crashes and Casualties by Crash Type and Severity:
Rural

	Crashes					Casualties			
	Fatal Crashes	Serious Injury Crashes	Minor Injury Crashes	Property Damage Crashes	ALL CRASHES	Fatalities	Serious Injuries	Minor Injuries	ALL CASUALTIES
MULTI VEHICLE									
Head On	6	12	20	19	57	7	19	34	60
Rear End	1	6	40	116	163	1	6	57	64
Side Swipe	1	7	18	81	107	1	10	26	37
Right Angle	4	25	96	194	319	4	31	148	183
Right Turn	0	3	14	39	56	0	3	30	33
Hit Parked Vehicle	0	4	18	80	102	0	5	21	26
Sub-total	12	57	206	529	804	13	74	316	403
SINGLE VEHICLE									
Hit Fixed Object	22	64	143	343	572	25	83	174	282
Hit Pedestrian	3	10	20	16	49	3	10	20	33
Hit Animal	0	4	18	102	124	0	4	21	25
Hit Object on Road	0	2	4	15	21	0	2	4	6
Roll Over	17	50	107	137	311	18	61	144	223
Left Road Out of Control	0	6	23	40	69	0	6	28	34
Other	0	0	4	25	29	0	0	4	4
Sub -total	42	136	319	678	1175	46	166	395	607
TOTAL	54	193	525	1207	1979	59	240	711	1010

Table 11c: Crashes and Casualties by Crash Type and Severity:
South Australia

	Crashes				Casualties				
	Fatal Crashes	Serious Injury Crashes	Minor Injury Crashes	Property Damage Crashes	ALL CRASHES	Fatalities	Serious Injuries	Minor Injuries	ALL CASUALTIES
MULTI VEHICLE									
Head On	7	42	67	89	205	8	55	124	187
Rear End	3	47	1034	2156	3240	3	53	1260	1316
Side Swipe	2	40	222	1112	1376	2	44	261	307
Right Angle	10	110	784	1803	2707	10	141	1009	1160
Right Turn	1	62	371	647	1081	1	68	535	604
Hit Parked Vehicle	1	26	139	831	997	1	29	157	187
Sub-total	24	327	2617	6638	9606	25	390	3346	3761
SINGLE VEHICLE									
Hit Fixed Object	35	180	449	1447	2111	38	215	548	801
Hit Pedestrian	14	79	163	141	397	14	80	176	270
Hit Animal	0	12	30	150	192	0	12	33	45
Hit Object on Road	0	3	7	41	51	0	3	7	10
Roll Over	21	106	227	223	577	22	118	271	411
Left Road Out of Control	0	7	31	76	114	0	7	36	43
Other	0	2	22	77	101	0	2	25	27
Sub -total	70	389	929	2155	3543	74	437	1096	1607
TOTAL	94	716	3546	8793	13149	99	827	4442	5368

Table 12: Hit Fixed Object Crashes by Object First Hit and Severity

Type of Fixed Object	Fatal Crashes	Serious Injury Crashes	Minor Injury Crashes	Property Damage Crashes	ALL CRASHES
Tree	21	80	182	424	707
Traffic Signal Pole	0	3	6	36	45
Pole - not Stobie	1	5	14	103	123
Bridge	0	0	3	8	11
Sign Post	3	6	16	69	94
Stobie Pole	2	18	47	173	240
Other Fixed Obstruction	6	51	145	518	720
Guard Rail	2	17	34	93	146
Wire Rope barrier	0	0	2	23	25
TOTAL	35	180	449	1447	2111

Table 13: Single Vehicle Crashes by Motor Vehicle Type and Severity

Type of Vehicle	Fatal Crashes	Serious Injury Crashes	Minor Injury Crashes	Property Damage Crashes	ALL CRASHES
Passenger Vehicle	52	251	696	1918	2917
Light Truck (\leq 4.5 tonnes)	0	1	5	9	15
Heavy Vehicle	5	6	35	157	203
Buses	1	3	5	9	18
Motorcycles	12	99	137	54	302
Bicycles	0	26	47	6	79
Other	0	3	4	2	9
TOTAL	70	389	929	2155	3543

Figure 4: Definition for Coding Accidents (DCA)¹

<p>Pedestrian on foot in toy/pram</p> <p>100 NEAR SIDE A Xⁿ C A B M/B C</p>	<p>Vehicles from adjacent directions (intersections only)</p> <p>110 CROSS TRAFFIC A B Xⁿ M/B N</p>	<p>Vehicles from opposing directions</p> <p>120 HEAD ON (NOT OVERTAKING) A - Wrong side B - other L K Xⁿ M/B N</p>	<p>Vehicles from same direction</p> <p>130 VEHICLES IN SAME LINES A B Xⁿ N A M/B N</p>	<p>Manoeuvring</p> <p>140 U TURN P M U A B</p>	<p>Overtaking</p> <p>150 HEAD ON (INCL SIDE SWIPE) Q Y A B</p>	<p>On path</p> <p>160 PARKED R A B</p>	<p>Off path on straight</p> <p>170 OFF CARRIAGEWAY TOLLSET V A B</p>	<p>Off path on curve</p> <p>180 OFF CARRIAGEWAY RIGHT BEND V W A B</p>	<p>Passenger and miscellaneous</p> <p>190 FELL FROM VEHICLE X</p>
<p>101</p> <p>101 NEAR SIDE A Xⁿ A B C D M/B D</p>	<p>111</p> <p>111 RIGHT FAR A B Xⁿ M/B N</p>	<p>121</p> <p>121 RIGHT THRU Xⁿ M/B N</p>	<p>131</p> <p>131 LEFT REAR A B Xⁿ N A M/B N</p>	<p>141</p> <p>141 U TURN INTO FINED OBJECT, PARKED VEHICLE Q Y A B</p>	<p>151</p> <p>151 OUT OF CONTROL A B</p>	<p>161</p> <p>161 DOUBLE PARKED A B</p>	<p>171</p> <p>171 LEFT OFF CARRIAGEWAY INTO OFF-PARKED VEHICLE V W A B</p>	<p>181</p> <p>181 OFF RIGHT BEND INTO OBJECT/PARKED VEHICLE V W A B</p>	<p>191</p> <p>191 LOAD OR MISSILE FROM STRUCK VEHICLE A</p>
<p>102</p> <p>102 NEAR SIDE A Xⁿ A B C D M/B C D</p>	<p>112</p> <p>112 LEFT FAR A B Xⁿ M/B N</p>	<p>122</p> <p>122 LEFT THRU Xⁿ M/B N</p>	<p>132</p> <p>132 RIGHT END A B Xⁿ N A M/B N</p>	<p>142</p> <p>142 LEAVING PARKING R A B</p>	<p>152</p> <p>152 PULLING OUT B U A B</p>	<p>162</p> <p>162 ACCIDENT OR BROKEN DOWN A B</p>	<p>172</p> <p>172 OFF CARRIAGEWAY TOLLSET V A B</p>	<p>182</p> <p>182 OFF CARRIAGEWAY LEFT BEND V W A B</p>	<p>192</p> <p>192 STRUCK TRAIN A B</p>
<p>103</p> <p>103 NEAR SIDE A E</p>	<p>113</p> <p>113 RIGHT NEAR A B Xⁿ M/B N</p>	<p>123</p> <p>123 RIGHT LEFT A B Xⁿ M/B N</p>	<p>133</p> <p>133 LANE SIDE SWIPE A B O</p>	<p>143</p> <p>143 ENTERING PARKING R A B</p>	<p>153</p> <p>153 CUTTING IN A B</p>	<p>163</p> <p>163 VEHICLE DOOR A B</p>	<p>173</p> <p>173 RIGHT OFF CARRIAGEWAY INTO OBJECT/PARKED VEHICLE V W A B</p>	<p>183</p> <p>183 OFF LEFT BEND INTO OBJECT/PARKED VEHICLE V W A B</p>	<p>193</p> <p>193 STRUCK RAILWAY CROSSING FURNITURE V Q A B</p>
<p>104</p> <p>104 NEAR SIDE A F</p>	<p>114</p> <p>114 TWO RIGHT TURNING A B Xⁿ M/B N</p>	<p>124</p> <p>124 RIGHT RIGHT A B Xⁿ M/B N</p>	<p>134</p> <p>134 LANE CHANGE RIGHT (OUT OF STRIKING) A B O</p>	<p>144</p> <p>144 PARKING VEHICLES ONLY R A B</p>	<p>154</p> <p>154 PULLING OUT - REAR END A B</p>	<p>164</p> <p>164 REMANENT OBSTRUCTION ON CARRIAGEWAY Q A B</p>	<p>174</p> <p>174 OUT OF CONTROL ON CARRIAGEWAY V W A B</p>	<p>184</p> <p>184 OUT OF CONTROL ON CARRIAGEWAY V W A B</p>	<p>194</p> <p>194 PARKED CAR RUN AWAY V Q A B</p>
<p>105</p> <p>105 NEAR SIDE A F</p>	<p>115</p> <p>115 RIGHT LEFT FAR A B Xⁿ M/B N</p>	<p>125</p> <p>125 LEFT LEFT Xⁿ M/B N</p>	<p>135</p> <p>135 LANE CHANGE LEFT Xⁿ N I M/B N</p>	<p>145</p> <p>145 REVERSING Q Y A B</p>	<p>155</p> <p>155 OFF END OF ROAD/T INTERSECTION V W A B</p>	<p>165</p> <p>165 TEMPORARY ROADWORKS A B</p>	<p>175</p> <p>175 OFF END OF ROAD/T INTERSECTION V W A B</p>	<p>185</p> <p>185 OFF END OF ROAD/T INTERSECTION V W A B</p>	<p>195</p> <p>195 OFF CARRIAGEWAY UNKNOWN SIDE V W A B</p>
<p>106</p> <p>106 NEAR SIDE A G</p>	<p>116</p> <p>116 LEFT NEAR A B Xⁿ M/B N</p>	<p>126</p> <p>126 RIGHT TURN SIDE SWIPE M/B N I Xⁿ M/B N</p>	<p>136</p> <p>136 RIGHT TURN SIDE SWIPE M/B N I Xⁿ M/B N</p>	<p>146</p> <p>146 REVERSING INTO ROADWORKS INCLUDING VEHICLES Q Y A B</p>	<p>176</p> <p>176 OFF CARRIAGEWAY UNKNOWN SIDE V W A B</p>	<p>166</p> <p>166 STRUCK OBJECT ON CARRIAGEWAY Q A B</p>	<p>176</p> <p>176 OFF CARRIAGEWAY UNKNOWN SIDE V W A B</p>	<p>186</p> <p>186 OFF CARRIAGEWAY UNKNOWN SIDE V W A B</p>	<p>196</p> <p>196 OFF CARRIAGEWAY UNKNOWN SIDE V W A B</p>
<p>107</p> <p>107 NEAR SIDE A F H I</p>	<p>117</p> <p>117 RIGHT LEFT NEAR A B Xⁿ M/B N</p>	<p>127</p> <p>127 LEFT TURN SIDE SWIPE M/B N I Xⁿ M/B N</p>	<p>137</p> <p>137 LEFT TURN SIDE SWIPE M/B N I Xⁿ M/B N</p>	<p>147</p> <p>147 EMERGING FROM DRIVEWAY LANE I H S A B</p>	<p>177</p> <p>177 OFF CARRIAGEWAY UNKNOWN SIDE V W A B</p>	<p>167</p> <p>167 ANIMAL (NOT RIDGEM) A B</p>	<p>177</p> <p>177 OFF CARRIAGEWAY UNKNOWN SIDE V W A B</p>	<p>187</p> <p>187 OFF CARRIAGEWAY UNKNOWN SIDE V W A B</p>	<p>197</p> <p>197 OFF CARRIAGEWAY UNKNOWN SIDE V W A B</p>
<p>108</p> <p>108 NEAR SIDE A J D</p>	<p>118</p> <p>118 TWO LEFT TURN A B Xⁿ M/B N</p>	<p>128</p> <p>128 OTHER CROSSING A B</p>	<p>138</p> <p>138 FROM FOOTWAY K A B</p>	<p>148</p> <p>148 OTHER MANOEUVRING A B</p>	<p>178</p> <p>178 OFF CARRIAGEWAY UNKNOWN SIDE V W A B</p>	<p>168</p> <p>168 OTHER ON PATH Y A B</p>	<p>178</p> <p>178 OFF CARRIAGEWAY UNKNOWN SIDE V W A B</p>	<p>188</p> <p>188 OTHER CURVE V W A B</p>	<p>198</p> <p>198 UNKNOWN A B</p>
<p>109</p> <p>109 NEAR SIDE A J D</p>	<p>119</p> <p>119 OTHER ADJACENT A B</p>	<p>129</p> <p>129 OTHER CROSSING A B</p>	<p>139</p> <p>139 OTHER SAME DIRECTION A B</p>	<p>149</p> <p>149 OTHER MANOEUVRING A B</p>	<p>179</p> <p>179 OTHER STRAIGHT V W A B</p>	<p>169</p> <p>169 OTHER ON PATH Y A B</p>	<p>179</p> <p>179 OTHER STRAIGHT V W A B</p>	<p>189</p> <p>189 OTHER CURVE V W A B</p>	<p>199</p> <p>199 UNKNOWN A B</p>

¹ Definition for Coding Accidents – For more information please see Preface and Definitions & Explanatory Notes.

Table 14a: Crashes and Casualties by Crash Code Type: Metro Adelaide

Crash Code Type (DCA) ¹	Crashes					Casualties			
	Fatal Crashes	Serious Injury Crashes	Minor Injury Crashes	Property Damage Crashes	ALL CRASHES	Fatalities	Serious Injuries	Minor Injuries	ALL CASUALTIES
PEDESTRIANS									
100	3	27	53	50	133	3	28	60	91
101	1	0	6	6	13	1	0	8	9
102	3	25	38	23	89	3	25	39	67
103	1	5	10	10	26	1	5	11	17
104	1	2	3	6	12	1	2	4	7
105	0	0	3	0	3	0	0	3	3
106	1	2	5	2	10	1	2	6	9
107	0	4	7	15	26	0	4	7	11
108	0	1	4	2	7	0	1	4	5
109	1	3	14	14	32	1	3	15	19
Sub-total	11	69	143	128	351	11	70	157	238
ADJ DIRECTIONS									
110	2	28	181	371	582	2	49	240	291
111	0	1	48	171	220	0	1	56	57
112	0	0	6	10	16	0	0	9	9
113	2	32	248	471	753	2	35	318	355
114	0	0	17	56	73	0	0	21	21
115	0	1	2	23	26	0	1	2	3
116	1	13	57	176	247	1	14	68	83
117	0	0	0	1	1	0	0	0	0
118	0	0	0	6	6	0	0	0	0
119	0	1	8	25	34	0	1	11	12
Sub-total	5	76	567	1310	1958	5	101	725	831
OPP DIRECTIONS									
120	2	32	48	68	150	2	38	94	134
121	1	57	342	571	971	1	63	490	554
122	0	0	0	0	0	0	0	0	0
123	0	0	9	20	29	0	0	10	10
124	0	0	2	4	6	0	0	2	2
125	0	0	0	0	0	0	0	0	0
129	0	0	0	4	4	0	0	0	0
Sub-total	3	89	401	667	1160	3	101	596	700
SAME DIRECTION									
130	2	30	792	1679	2503	2	34	967	1003
131	0	3	97	129	229	0	4	107	111
132	0	10	100	198	308	0	11	124	135
133	1	6	24	144	175	1	6	26	33
134	0	4	35	235	274	0	5	46	51
135	0	2	37	245	284	0	2	46	48
136	0	0	14	50	64	0	0	14	14
137	0	9	27	82	118	0	9	27	36
139	0	2	1	4	7	0	2	1	3
Sub-total	3	66	1127	2766	3962	3	73	1358	1434
MANOEUVERING									
140	0	5	55	143	203	0	5	62	67
141	1	1	5	39	46	1	1	6	8
142	0	2	9	61	72	0	2	13	15
143	0	0	8	13	21	0	0	8	8
144	0	1	1	24	26	0	1	2	3
145	0	0	3	34	37	0	0	3	3

¹ Crash Code Type (DCA) - Refer to Figure 4

Table 14a: Crashes and Casualties by Crash Code Type: Metro Adelaide (cont.)

Crash Code Type (DCA) ¹	Crashes					Casualties			
	Fatal Crashes	Serious Injury Crashes	Minor Injury Crashes	Property Damage Crashes	ALL CRASHES	Fatalities	Serious Injuries	Minor Injuries	ALL CASUALTIES
146	0	4	5	66	75	0	4	5	9
147	1	5	70	205	281	1	5	83	89
148	0	4	31	40	75	0	4	31	35
149	0	1	10	43	54	0	1	11	12
Sub-total	2	23	197	668	890	2	23	224	249
OVERTAKING									
150	0	2	1	3	6	0	2	2	4
151	1	1	1	2	5	1	1	2	4
152	0	2	11	27	40	0	2	13	15
153	0	0	1	5	6	0	0	1	1
154	0	0	1	3	4	0	0	1	1
159	0	3	8	63	74	0	3	9	12
Sub-total	1	8	23	103	135	1	8	28	37
ON PATH									
160	0	11	84	536	631	0	11	96	107
161	0	0	0	0	0	0	0	0	0
162	0	0	1	3	4	0	0	1	1
163	0	4	16	26	46	0	5	16	21
164	0	2	2	28	32	0	2	2	4
165	0	0	0	2	2	0	0	0	0
166	0	1	3	23	27	0	1	3	4
167	0	8	12	46	66	0	8	12	20
169	1	4	14	85	104	1	4	15	20
Sub-total	1	30	132	749	912	1	31	145	177
OFF PATH, STRAIGHT									
170	0	3	5	19	27	0	3	5	8
171	4	32	114	398	548	4	38	146	188
172	1	0	2	6	9	1	0	2	3
173	2	23	54	195	274	2	27	57	86
174	0	28	59	28	115	0	28	60	88
175	0	6	6	23	35	0	8	6	14
176	0	11	25	105	141	0	11	27	38
179	0	0	2	3	5	0	0	2	2
Sub-total	7	103	267	777	1154	7	115	305	427
OFF PATH, CURVE									
180	1	3	12	9	25	1	3	12	16
181	2	27	57	154	240	2	30	69	101
182	0	6	6	8	20	0	6	6	12
183	4	13	45	155	217	4	16	59	79
184	0	8	21	17	46	0	8	21	29
189	0	0	0	1	1	0	0	0	0
Sub-total	7	57	141	344	549	7	63	167	237
MISCELLANEOUS									
190	0	1	7	0	8	0	1	7	8
191	0	1	3	30	34	0	1	5	6
192	0	0	1	8	9	0	0	1	1
193	0	0	0	2	2	0	0	0	0
194	0	0	6	9	15	0	0	7	7
199	0	0	6	25	31	0	0	6	6
Sub-total	0	2	23	74	99	0	2	26	28
TOTAL	40	523	3021	7586	11170	40	587	3731	4358

¹ Crash Code Type (DCA) - Refer to Figure 4

Table 14b: Crashes and Casualties by Crash Code Type: Rural

Crash Code Type (DCA) ¹	Crashes					Casualties			
	Fatal Crashes	Serious Injury Crashes	Minor Injury Crashes	Property Damage Crashes	ALL CRASHES	Fatalities	Serious Injuries	Minor Injuries	ALL CASUALTIES
PEDESTRIANS									
100	1	1	4	8	14	1	1	4	6
101	0	0	1	0	1	0	0	1	1
102	0	4	5	2	11	0	4	5	9
103	1	2	3	1	7	1	2	3	6
104	1	0	2	0	3	1	0	2	3
105	0	0	0	0	0	0	0	0	0
106	0	0	0	0	0	0	0	0	0
107	0	2	1	2	5	0	2	1	3
108	0	0	0	0	0	0	0	0	0
109	0	2	4	4	10	0	2	4	6
Sub-total	3	11	20	17	51	3	11	20	34
ADJ DIRECTIONS									
110	2	11	40	76	129	2	16	68	86
111	1	1	6	12	20	1	1	9	11
112	0	0	0	2	2	0	0	0	0
113	1	4	30	43	78	1	5	46	52
114	0	0	1	4	5	0	0	1	1
115	0	0	0	1	1	0	0	0	0
116	0	1	3	14	18	0	1	4	5
117	0	0	0	0	0	0	0	0	0
118	0	0	0	1	1	0	0	0	0
119	0	0	1	5	6	0	0	1	1
Sub-total	4	17	81	158	260	4	23	129	156
OPP DIRECTIONS									
120	6	12	18	19	55	7	19	30	56
121	0	2	14	40	56	0	2	30	32
122	0	0	0	0	0	0	0	0	0
123	0	0	0	0	0	0	0	0	0
124	0	0	0	0	0	0	0	0	0
125	0	0	0	0	0	0	0	0	0
129	0	0	0	1	1	0	0	0	0
Sub-total	6	14	32	60	112	7	21	60	88
SAME DIRECTION									
130	1	3	23	72	99	1	3	31	35
131	0	0	8	12	20	0	0	8	8
132	0	3	8	28	39	0	3	16	19
133	0	1	1	8	10	0	1	1	2
134	0	0	1	10	11	0	0	1	1
135	0	1	5	2	8	0	1	6	7
136	0	0	0	3	3	0	0	0	0
137	0	0	1	6	7	0	0	1	1
139	0	0	0	0	0	0	0	0	0
Sub-total	1	8	47	141	197	1	8	64	73
MANOEUVERING									
140	1	3	5	14	23	1	5	9	15
141	0	0	0	1	1	0	0	0	0
142	0	0	1	13	14	0	0	1	1
143	0	0	0	3	3	0	0	0	0
144	0	0	1	6	7	0	0	1	1
145	0	0	1	6	7	0	0	1	1

¹ Crash Code Type (DCA) - Refer to Figure 4

Table 14b: Crashes and Casualties by Crash Code Type: Rural (cont.)

Crash Code Type (DCA) ¹	Crashes					Casualties			
	Fatal Crashes	Serious Injury Crashes	Minor Injury Crashes	Property Damage Crashes	ALL CRASHES	Fatalities	Serious Injuries	Minor Injuries	ALL CASUALTIES
146	0	0	1	8	9	0	0	2	2
147	0	6	8	21	35	0	6	12	18
148	0	2	4	5	11	0	2	4	6
149	0	0	5	17	22	0	0	5	5
Sub-total	1	11	26	94	132	1	13	35	49
OVERTAKING									
150	0	0	3	0	3	0	0	5	5
151	0	0	2	2	4	0	0	2	2
152	0	1	2	14	17	0	1	3	4
153	0	0	1	1	2	0	0	2	2
154	0	0	0	0	0	0	0	0	0
159	0	1	1	11	13	0	2	5	7
Sub-total	0	2	9	28	39	0	3	17	20
ON PATH									
160	0	2	10	53	65	0	2	11	13
161	0	0	0	0	0	0	0	0	0
162	0	0	1	0	1	0	0	1	1
163	0	0	1	1	2	0	0	2	2
164	0	0	1	3	4	0	0	1	1
165	0	0	1	2	3	0	0	1	1
166	0	1	3	13	17	0	1	3	4
167	0	4	17	102	123	0	4	18	22
169	0	2	0	9	11	0	3	0	3
Sub-total	0	9	34	183	226	0	10	37	47
OFF PATH, STRAIGHT									
170	4	3	9	7	23	4	3	11	18
171	5	9	33	79	126	5	12	40	57
172	3	3	11	8	25	3	3	16	22
173	4	10	27	52	93	6	15	29	50
174	0	20	23	33	76	0	21	25	46
175	1	1	2	13	17	1	3	2	6
176	2	31	44	114	191	3	38	64	105
179	0	0	0	1	1	0	0	0	0
Sub-total	19	77	149	307	552	22	95	187	304
OFF PATH, CURVE									
180	4	9	36	34	83	4	12	51	67
181	9	16	39	61	125	10	21	51	82
182	0	5	11	20	36	0	6	12	18
183	5	7	25	59	96	5	7	29	41
184	1	6	10	20	37	1	9	13	23
189	0	0	0	0	0	0	0	0	0
Sub-total	19	43	121	194	377	20	55	156	231
MISCELLANEOUS									
190	0	0	0	0	0	0	0	0	0
191	1	0	3	17	21	1	0	3	4
192	0	1	2	0	3	0	1	2	3
193	0	0	0	1	1	0	0	0	0
194	0	0	1	2	3	0	0	1	1
199	0	0	0	5	5	0	0	0	0
Sub-total	1	1	6	25	33	1	1	6	8
TOTAL	54	193	525	1207	1979	59	240	711	1010

¹ Crash Code Type (DCA) - Refer to Figure 4

Table 14c: Crashes and Casualties by Crash Code Type: South Australia

Crash Code Type (DCA) ¹	Crashes				ALL CRASHES	Casualties			
	Fatal Crashes	Serious Injury Crashes	Minor Injury Crashes	Property Damage Crashes		Fatalities	Serious Injuries	Minor Injuries	ALL CASUALTIES
PEDESTRIANS									
100	4	28	57	58	147	4	29	64	97
101	1	0	7	6	14	1	0	9	10
102	3	29	43	25	100	3	29	44	76
103	2	7	13	11	33	2	7	14	23
104	2	2	5	6	15	2	2	6	10
105	0	0	3	0	3	0	0	3	3
106	1	2	5	2	10	1	2	6	9
107	0	6	8	17	31	0	6	8	14
108	0	1	4	2	7	0	1	4	5
109	1	5	18	18	42	1	5	19	25
Sub-total	14	80	163	145	402	14	81	177	272
ADJ DIRECTIONS									
110	4	39	221	447	711	4	65	308	377
111	1	2	54	183	240	1	2	65	68
112	0	0	6	12	18	0	0	9	9
113	3	36	278	514	831	3	40	364	407
114	0	0	18	60	78	0	0	22	22
115	0	1	2	24	27	0	1	2	3
116	1	14	60	190	265	1	15	72	88
117	0	0	0	1	1	0	0	0	0
118	0	0	0	7	7	0	0	0	0
119	0	1	9	30	40	0	1	12	13
Sub-total	9	93	648	1468	2218	9	124	854	987
OPP DIRECTIONS									
120	8	44	66	87	205	9	57	124	190
121	1	59	356	611	1027	1	65	520	586
122	0	0	0	0	0	0	0	0	0
123	0	0	9	20	29	0	0	10	10
124	0	0	2	4	6	0	0	2	2
125	0	0	0	0	0	0	0	0	0
129	0	0	0	5	5	0	0	0	0
Sub-total	9	103	433	727	1272	10	122	656	788
SAME DIRECTION									
130	3	33	815	1751	2602	3	37	998	1038
131	0	3	105	141	249	0	4	115	119
132	0	13	108	226	347	0	14	140	154
133	1	7	25	152	185	1	7	27	35
134	0	4	36	245	285	0	5	47	52
135	0	3	42	247	292	0	3	52	55
136	0	0	14	53	67	0	0	14	14
137	0	9	28	88	125	0	9	28	37
139	0	2	1	4	7	0	2	1	3
Sub-total	4	74	1174	2907	4159	4	81	1422	1507
MANOEUVERING									
140	1	8	60	157	226	1	10	71	82
141	1	1	5	40	47	1	1	6	8
142	0	2	10	74	86	0	2	14	16
143	0	0	8	16	24	0	0	8	8
144	0	1	2	30	33	0	1	3	4
145	0	0	4	40	44	0	0	4	4

¹ Crash Code Type (DCA) - Refer to Figure 4

Table 14c: Crashes and Casualties by Crash Code Type: South Australia (cont.)

Crash Code Type (DCA) ¹	Crashes					Casualties			
	Fatal Crashes	Serious Injury Crashes	Minor Injury Crashes	Property Damage Crashes	ALL CRASHES	Fatalities	Serious Injuries	Minor Injuries	ALL CASUALTIES
146	0	4	6	74	84	0	4	7	11
147	1	11	78	226	316	1	11	95	107
148	0	6	35	45	86	0	6	35	41
149	0	1	15	60	76	0	1	16	17
Sub-total	3	34	223	762	1022	3	36	259	298
OVERTAKING									
150	0	2	4	3	9	0	2	7	9
151	1	1	3	4	9	1	1	4	6
152	0	3	13	41	57	0	3	16	19
153	0	0	2	6	8	0	0	3	3
154	0	0	1	3	4	0	0	1	1
159	0	4	9	74	87	0	5	14	19
Sub-total	1	10	32	131	174	1	11	45	57
ON PATH									
160	0	13	94	589	696	0	13	107	120
161	0	0	0	0	0	0	0	0	0
162	0	0	2	3	5	0	0	2	2
163	0	4	17	27	48	0	5	18	23
164	0	2	3	31	36	0	2	3	5
165	0	0	1	4	5	0	0	1	1
166	0	2	6	36	44	0	2	6	8
167	0	12	29	148	189	0	12	30	42
169	1	6	14	94	115	1	7	15	23
Sub-total	1	39	166	932	1138	1	41	182	224
OFF PATH, STRAIGHT									
170	4	6	14	26	50	4	6	16	26
171	9	41	147	477	674	9	50	186	245
172	4	3	13	14	34	4	3	18	25
173	6	33	81	247	367	8	42	86	136
174	0	48	82	61	191	0	49	85	134
175	1	7	8	36	52	1	11	8	20
176	2	42	69	219	332	3	49	91	143
179	0	0	2	4	6	0	0	2	2
Sub-total	26	180	416	1084	1706	29	210	492	731
OFF PATH, CURVE									
180	5	12	48	43	108	5	15	63	83
181	11	43	96	215	365	12	51	120	183
182	0	11	17	28	56	0	12	18	30
183	9	20	70	214	313	9	23	88	120
184	1	14	31	37	83	1	17	34	52
189	0	0	0	1	1	0	0	0	0
Sub-total	26	100	262	538	926	27	118	323	468
MISCELLANEOUS									
190	0	1	7	0	8	0	1	7	8
191	1	1	6	47	55	1	1	8	10
192	0	1	3	8	12	0	1	3	4
193	0	0	0	3	3	0	0	0	0
194	0	0	7	11	18	0	0	8	8
199	0	0	6	30	36	0	0	6	6
Sub-total	1	3	29	99	132	1	3	32	36
TOTAL	94	716	3546	8793	13149	99	827	4442	5368

¹ Crash Code Type (DCA) - Refer to Figure 4

Table 15a: Crashes and Casualties by Location Type and Severity:
Metropolitan Adelaide

Location Type	Crashes					Casualties			
	Fatal Crashes	Serious Injury Crashes	Minor Injury Crashes	Property Damage Crashes	ALL CRASHES	Fatalities	Serious Injuries	Minor Injuries	ALL CASUALTIES
INTERSECTION									
Interchange	0	1	3	11	15	0	1	5	6
Cross Road	4	104	777	1641	2526	4	134	971	1109
Y-Junction	0	0	8	12	20	0	0	9	9
T-Junction	6	120	812	1841	2779	6	130	1010	1146
Multiple	0	5	35	85	125	0	5	44	49
Rail Crossing	0	1	3	6	10	0	1	3	4
Sub-total	10	231	1638	3596	5475	10	271	2042	2323
MID BLOCK									
Crossover	0	0	0	1	1	0	0	0	0
Rail Crossing	0	0	5	10	15	0	0	5	5
Divided Road	8	84	584	1680	2356	8	94	711	813
Not Divided	16	191	699	2025	2931	16	203	857	1076
One Way	0	2	4	14	20	0	2	4	6
Freeway	4	11	61	196	272	4	13	77	94
Ramp On	0	0	2	7	9	0	0	2	2
Ramp Off	0	1	4	12	17	0	1	4	5
Pedestrian Crossing	1	2	22	36	61	1	2	26	29
Other Midblock	1	1	2	9	13	1	1	3	5
Sub-total	30	292	1383	3990	5695	30	316	1689	2035
TOTAL	40	523	3021	7586	11170	40	587	3731	4358

Table 15b: Crashes and Casualties by Location Type and Severity:
Rural

Location Type	Crashes					Casualties			
	Fatal Crashes	Serious Injury Crashes	Minor Injury Crashes	Property Damage Crashes	ALL CRASHES	Fatalities	Serious Injuries	Minor Injuries	ALL CASUALTIES
INTERSECTION									
Interchange	0	0	0	0	0	0	0	0	0
Cross Road	5	21	87	168	281	5	26	119	150
Y-Junction	0	0	0	0	0	0	0	0	0
T-Junction	5	19	69	165	258	5	23	105	133
Multiple	0	2	3	10	15	0	2	4	6
Rail Crossing	0	0	0	0	0	0	0	0	0
Sub-total	10	42	159	343	554	10	51	228	289
MID BLOCK									
Rail Crossing	0	2	3	0	5	0	2	4	6
Divided Road	2	6	19	66	93	2	7	21	30
Not Divided	42	139	334	784	1299	47	176	447	670
One Way	0	0	2	3	5	0	0	2	2
Freeway	0	0	2	5	7	0	0	3	3
Ramp On	0	0	0	1	1	0	0	0	0
Ramp Off	0	0	0	0	0	0	0	0	0
Pedestrian Crossing	0	0	0	3	3	0	0	0	0
Other Midblock	0	4	6	2	12	0	4	6	10
Sub-total	44	151	366	864	1425	49	189	483	721
TOTAL	54	193	525	1207	1979	59	240	711	1010

Table 15c: Crashes and Casualties by Location Type and Severity:
South Australia

Location Type	Crashes					Casualties			
	Fatal Crashes	Serious Injury Crashes	Minor Injury Crashes	Property Damage Crashes	ALL CRASHES	Fatalities	Serious Injuries	Minor Injuries	ALL CASUALTIES
INTERSECTION									
Interchange	0	1	3	11	15	0	1	5	6
Cross Road	9	125	864	1809	2807	9	160	1090	1259
Y- Junction	0	0	8	12	20	0	0	9	9
T-Junction	11	139	881	2006	3037	11	153	1115	1279
Multiple	0	7	38	95	140	0	7	48	55
Rail Crossing	0	1	3	6	10	0	1	3	4
Sub-total	20	273	1797	3939	6029	20	322	2270	2612
MID BLOCK									
Crossover	0	0	0	1	1	0	0	0	0
Rail Crossing	0	2	8	10	20	0	2	9	11
Divided Road	10	90	603	1746	2449	10	101	732	843
Not Divided	58	330	1033	2809	4230	63	379	1304	1746
One Way	0	2	6	17	25	0	2	6	8
Freeway	4	11	63	201	279	4	13	80	97
Ramp On	0	0	2	8	10	0	0	2	2
Ramp Off	0	1	4	12	17	0	1	4	5
Pedestrian Crossing	1	2	22	39	64	1	2	26	29
Other	1	5	8	11	25	1	5	9	15
Sub-total	74	443	1749	4854	7120	79	505	2172	2756
TOTAL	94	716	3546	8793	13149	99	827	4442	5368

Table 16a: Crashes and Casualties by Traffic Control and Severity:
Metropolitan Adelaide

Traffic Control	Crashes					Casualties			
	Fatal Crashes	Serious Injury Crashes	Minor Injury Crashes	Property Damage Crashes	ALL CRASHES	Fatalities	Serious Injuries	Minor Injuries	ALL CASUALTIES
INTERSECTION									
Traffic Signals	0	86	673	1402	2161	0	99	855	954
Give Way Sign	5	37	215	474	731	5	57	281	343
Stop Sign	1	19	138	298	456	1	20	178	199
Roundabout	1	16	132	316	465	1	17	143	161
No Control	3	73	480	1106	1662	3	78	585	666
Sub-total	10	231	1638	3596	5475	10	271	2042	2323
MID BLOCK									
Traffic Signals	1	2	19	32	54	1	2	23	26
Stop Sign	0	0	0	3	3	0	0	0	0
Roundabout	29	290	1355	3944	5618	29	314	1656	1999
No Control	0	0	1	7	8	0	0	1	1
Rail Xing-Boom	0	0	1	1	2	0	0	1	1
Rail Xing-Flashing	0	0	3	2	5	0	0	3	3
Rail Xing-Traffic Signals	0	0	2	0	2	0	0	2	2
Other	0	0	2	1	3	0	0	3	3
Sub-total	30	292	1383	3990	5695	30	316	1689	2035
TOTAL	40	523	3021	7586	11170	40	587	3731	4358

Table 16b: Crashes and Casualties by Traffic Control and Severity:
Rural

Traffic Control	Crashes					Casualties			
	Fatal Crashes	Serious Injury Crashes	Minor Injury Crashes	Property Damage Crashes	ALL CRASHES	Fatalities	Serious Injuries	Minor Injuries	ALL CASUALTIES
INTERSECTION									
Traffic Signals	0	2	10	25	37	0	2	10	12
Give Way Sign	4	13	82	139	238	4	17	117	138
Stop Sign	0	5	7	24	36	0	6	17	23
Roundabout	1	6	9	38	54	1	6	9	16
No Control	5	15	51	117	188	5	19	75	99
Rail Xing-Boom	0	1	0	0	1	0	1	0	1
Sub-total	10	42	159	343	554	10	51	228	289
MID BLOCK									
Traffic Signals	0	0	0	1	1	0	0	0	0
Give Way Sign	0	0	2	0	2	0	0	3	3
Stop Sign	0	0	0	0	0	0	0	0	0
No Control	44	149	363	861	1417	49	187	479	715
Rail Xing-Boom	0	0	0	0	0	0	0	0	0
Rail Xing-Flashing	0	1	1	0	2	0	1	1	2
Rail Xing-No Control	0	1	0	0	1	0	1	0	1
Other	0	0	0	2	2	0	0	0	0
Sub-total	44	151	366	864	1425	49	189	483	721
TOTAL	54	193	525	1207	1979	59	240	711	1010

Table 16c: Crashes and Casualties by Traffic Control and Severity:
South Australia

Traffic Control	Crashes					Casualties			
	Fatal Crashes	Serious Injury Crashes	Minor Injury Crashes	Property Damage Crashes	ALL CRASHES	Fatalities	Serious Injuries	Minor Injuries	ALL CASUALTIES
Traffic Signals	0	88	683	1427	2198	0	101	865	966
Give Way Sign	9	50	297	613	969	9	74	398	481
Stop Sign	1	24	145	322	492	1	26	195	222
Roundabout	2	22	141	354	519	2	23	152	177
No Control	8	88	531	1223	1850	8	97	660	765
Rail Xing-Boom	0	1	0	0	1	0	1	0	1
Sub-total	20	273	1797	3939	6029	20	322	2270	2612
MID BLOCK									
Traffic Signals	1	2	19	33	55	1	2	23	26
Give Way Sign	0	0	2	0	2	0	0	3	3
Stop Sign	0	0	2	0	2	0	0	2	2
Roundabout	0	0	0	3	3	0	0	0	0
No Control	73	439	1718	4805	7035	78	501	2135	2714
Rail Xing-Boom	0	0	1	7	8	0	0	1	1
Rail Xing-Flashing	0	1	2	1	4	0	1	2	3
Rail Xing-Traffic Signals	0	0	3	2	5	0	0	3	3
Rail Xing-No Control	0	1	0	0	1	0	1	0	1
Other	0	0	2	3	5	0	0	3	3
Sub-total	74	443	1749	4854	7120	79	505	2172	2756
TOTAL	94	716	3546	8793	13149	99	827	4442	5368

Table 17: Crashes and Casualties by Area Speed Limit, Region & Severity

Area Speed Limit	Crashes					Casualties			
	Fatal Crashes	Serious Injury Crashes	Minor Injury Crashes	Property Damage Crashes	ALL CRASHES	Fatalities	Serious Injuries	Minor Injuries	ALL CASUALTIES
METROPOLITAN									
<50km/h	2	12	56	229	299	2	13	67	82
50km/h	6	138	678	2068	2890	6	146	781	933
60km/h	16	227	1741	4104	6088	16	260	2150	2426
70km/h	1	21	114	207	343	1	21	148	170
80km/h	8	84	298	615	1005	8	101	399	508
90km/h	0	12	46	119	177	0	15	66	81
100km/h	2	22	51	130	205	2	23	66	91
110km/h	5	7	37	114	163	5	8	54	67
Sub-total	40	523	3021	7586	11170	40	587	3731	4358
RURAL									
<50km/h	0	1	7	29	37	0	1	7	8
50km/h	2	38	120	299	459	2	39	138	179
60km/h	2	14	61	180	257	2	19	79	100
70km/h	0	1	0	1	2	0	1	0	1
80km/h	11	16	45	123	195	12	21	68	101
90km/h	0	2	6	12	20	0	2	7	9
100km/h	20	89	183	319	611	21	116	260	397
110km/h	19	32	103	244	398	22	41	152	215
Sub-total	54	193	525	1207	1979	59	240	711	1010
TOTAL	94	716	3546	8793	13149	99	827	4442	5368

Table 18: Crashes and Casualties by Light Conditions, Region & Severity

Light Conditions[1] & Region	Crashes					Casualties			
	Fatal Crashes	Serious Injury Crashes	Minor Injury Crashes	Property Damage Crashes	ALL CRASHES	Fatalities	Serious Injuries	Minor Injuries	ALL CASUALTIES
METROPOLITAN									
Daylight	26	362	2447	5797	8632	26	397	2977	3400
Night	14	161	574	1789	2538	14	190	754	958
Sub-total	40	523	3021	7586	11170	40	587	3731	4358
RURAL									
Daylight	36	117	392	868	1413	40	148	543	731
Night	18	76	133	339	566	19	92	168	279
Sub-total	54	193	525	1207	1979	59	240	711	1010
TOTAL	94	716	3546	8793	13149	99	827	4442	5368

Table 19: Crashes and Casualties by Vertical Alignment, Region & Severity

Vertical Alignment & Region	Crashes					Casualties			
	Fatal Crashes	Serious Injury Crashes	Minor Injury Crashes	Property Damage Crashes	ALL CRASHES	Fatalities	Serious Injuries	Minor Injuries	ALL CASUALTIES
METROPOLITAN									
Level	28	418	2555	6571	9572	28	474	3154	3656
Crest of Hill	0	9	43	100	152	0	10	53	63
Bottom of Hill	0	8	24	60	92	0	8	28	36
Slope	12	87	393	847	1339	12	94	488	594
Unknown	0	1	6	8	15	0	1	8	9
Sub-total	40	523	3021	7586	11170	40	587	3731	4358
RURAL									
Level	46	140	379	957	1522	50	175	515	740
Crest of Hill	2	9	29	39	79	3	10	39	52
Bottom of Hill	0	8	14	30	52	0	12	21	33
Slope	6	34	95	174	309	6	41	128	175
Unknown	0	2	8	7	17	0	2	8	10
Sub-total	54	193	525	1207	1979	59	240	711	1010
TOTAL	94	716	3546	8793	13149	99	827	4442	5368

Table 20: Crashes and Casualties by Horizontal Alignment, Region & Severity

Horizontal Alignment & Region	Crashes					Casualties			
	Fatal Crashes	Serious Injury Crashes	Minor Injury Crashes	Property Damage Crashes	ALL CRASHES	Fatalities	Serious Injuries	Minor Injuries	ALL CASUALTIES
METROPOLITAN									
Straight	27	414	2665	6785	9891	27	463	3283	3773
Curved, View Obscured	3	37	103	202	345	3	39	126	168
Curved, View Open	10	72	253	595	930	10	85	322	417
Unknown	0	0	0	4	4	0	0	0	0
Sub-total	40	523	3021	7586	11170	40	587	3731	4358
RURAL									
Straight	29	135	363	898	1425	33	164	491	688
Curved, View Obscured	4	19	52	108	183	4	22	77	103
Curved, View Open	21	39	110	199	369	22	54	143	219
Unknown	0	0	0	2	2	0	0	0	0
Sub-total	54	193	525	1207	1979	59	240	711	1010
TOTAL	94	716	3546	8793	13149	99	827	4442	5368

Table 21: Crashes and Casualties by Road Moisture, Region & Severity

Road Moisture & Region	Crashes					Casualties			
	Fatal Crashes	Serious Injury Crashes	Minor Injury Crashes	Property Damage Crashes	ALL CRASHES	Fatalities	Serious Injuries	Minor Injuries	ALL CASUALTIES
METROPOLITAN									
Dry	36	474	2668	6628	9806	36	534	3292	3862
Wet	4	48	351	948	1351	4	52	437	493
Unknown	0	1	2	10	13	0	1	2	3
Sub-total	40	523	3021	7586	11170	40	587	3731	4358
RURAL									
Dry	48	164	450	1026	1688	53	206	612	871
Wet	6	26	73	172	277	6	31	95	132
Unknown	0	3	2	9	14	0	3	4	7
Sub-total	54	193	525	1207	1979	59	240	711	1010
TOTAL	94	716	3546	8793	13149	99	827	4442	5368

Table 22: Crashes and Casualties by Route and Severity

Route	Crashes					Casualties			
	Fatal Crashes	Serious Injury Crashes	Minor Injury Crashes	Property Damage Crashes	ALL CRASHES	Fatalities	Serious Injuries	Minor Injuries	ALL CASUALTIES
Anzac Highway	1	7	38	78	124	1	8	54	63
Barrier Highway	1	1	8	11	21	1	2	13	16
Cudlee Creek - Lobethal Road	0	3	0	3	6	0	3	0	3
Dukes Highway	1	1	8	15	25	1	1	9	11
Eyre Highway	2	3	7	17	29	2	4	11	17
Gorge Road	0	7	17	27	51	0	8	20	28
Lincoln Highway	0	1	7	16	24	0	1	10	11
Lyndoch - Chain of Ponds Road	0	2	3	11	16	0	2	3	5
Lower North East Road	0	0	5	11	16	0	0	7	7
Horrocks Highway	0	4	16	17	37	0	4	18	22
Main North Road (M) ¹	0	16	144	363	523	0	17	189	206
North East Road	0	9	90	187	286	0	10	111	121
Main South Road	0	5	20	29	54	0	5	40	45
Port Wakefield Road	4	9	28	56	97	5	13	40	58
Princes Highway	4	4	13	46	67	4	6	14	24
Riddoch Highway	2	0	3	16	21	2	1	3	6
South Eastern Freeway ²	2	5	27	84	118	2	5	35	42
Southern Expressway	0	2	18	41	61	0	2	19	21
Stuart Highway	2	2	4	15	23	3	3	5	11
Sturt Highway	3	5	18	45	71	3	6	31	40
Tea Tree Gully - Mannum Road	2	6	14	25	47	2	7	20	29
Victor Harbor Road	1	6	21	47	75	1	9	40	50

M = Metropolitan Adelaide

¹ From Fitzroy Terrace to Gawler Bypass.

² Does not include the intersection with Cross Road.

Table 23a: Crashes and Casualties by Local Government Area & Severity, Metropolitan Adelaide: Council Roads

Local Government Area	Crashes				Casualties				
	Fatal Crashes	Serious Injury Crashes	Minor Injury Crashes	Property Damage Crashes	ALL CRASHES	Fatalities	Serious Injuries	Minor Injuries	ALL CASUALTIES
City of Adelaide	1	12	36	64	113	1	12	41	54
Adelaide Hills Council	0	23	128	304	455	0	25	145	170
Adelaide Plains Council	0	1	2	11	14	0	1	4	5
The Barossa Council	0	0	0	1	1	0	0	0	0
City of Burnside	0	5	21	54	80	0	5	22	27
Campbelltown City Council	0	3	18	51	72	0	3	20	23
City of Charles Sturt	0	10	46	163	219	0	10	52	62
Town of Gawler	0	4	13	38	55	0	4	17	21
City of Holdfast Bay	0	9	35	71	115	0	9	41	50
Light Regional Council	0	1	6	7	14	0	1	7	8
City of Marion	0	7	32	134	173	0	8	39	47
City of Mitcham	2	3	36	126	167	2	4	39	45
Mount Barker District Council	2	8	27	63	100	2	9	30	41
City of Norwood Payneham & St Peters	0	6	18	52	76	0	6	22	28
City of Onkaparinga	2	24	118	227	371	2	25	147	174
City of Playford	0	26	108	281	415	0	30	141	171
City of Prospect	1	2	4	22	29	1	3	4	8
City of Port Adelaide Enfield	1	7	50	200	258	1	7	57	65
City of Salisbury	1	14	78	270	363	1	17	96	114
City of Tea Tree Gully	0	4	24	87	115	0	5	25	30
City of Unley	0	5	16	59	80	0	5	17	22
Town of Walkerville	0	0	2	14	16	0	0	2	2
City of West Torrens	0	10	33	106	149	0	10	36	46
Total	10	184	851	2405	3450	10	199	1004	1213

Table 23b: Crashes and Casualties by Local Government Area & Severity, Metropolitan Adelaide: Departmental Roads

Local Government Area	Crashes				Casualties				
	Fatal Crashes	Serious Injury Crashes	Minor Injury Crashes	Property Damage Crashes	ALL CRASHES	Fatalities	Serious Injuries	Minor Injuries	ALL CASUALTIES
City of Adelaide	4	38	97	182	321	4	40	117	161
Adelaide Hills Council	0	4	37	110	151	0	4	37	41
Adelaide Plains Council	1	3	5	9	18	1	4	11	16
City of Burnside	0	10	72	134	216	0	10	80	90
Campbelltown City Council	1	9	61	113	184	1	9	70	80
City of Charles Sturt	4	29	210	488	731	4	34	258	296
Town of Gawler	1	2	19	66	88	1	2	23	26
City of Holdfast Bay	0	7	40	110	157	0	9	45	54
Light Regional Council	2	3	15	29	49	2	3	17	22
City of Marion	1	21	145	339	506	1	23	172	196
City of Mitcham	2	23	123	329	477	2	25	151	178
Mount Barker District Council	1	10	37	112	160	1	11	53	65
City of Norwood Payneham & St Peters	1	18	113	321	453	1	19	147	167
City of Onkaparinga	4	34	165	343	546	4	58	258	320
City of Playford	1	21	126	287	435	1	23	171	195
City of Prospect	0	3	61	133	197	0	3	68	71
City of Port Adelaide Enfield	4	31	265	689	989	4	33	313	350
City of Salisbury	1	35	238	532	806	1	37	312	350
City of Tea Tree Gully	0	10	96	187	293	0	11	125	136
City of Unley	2	4	53	161	220	2	4	65	71
Town of Walkerville	0	2	41	98	141	0	2	55	57
City of West Torrens	0	22	151	409	582	0	24	179	203
Total	30	339	2170	5181	7720	30	388	2727	3145

Table 23c: Crashes and Casualties by Local Government Area & Severity, Metropolitan Adelaide: All Roads

Local Government Area	Crashes					Casualties			
	Fatal Crashes	Serious Injury Crashes	Minor Injury Crashes	Property Damage Crashes	ALL CRASHES	Fatalities	Serious Injuries	Minor Injuries	ALL CASUALTIES
City of Adelaide	5	50	133	246	434	5	52	158	215
Adelaide Hills Council	0	27	165	414	606	0	29	182	211
Adelaide Plains Council	1	4	7	20	32	1	5	15	21
The Barossa Council	0	0	0	1	1	0	0	0	0
City of Burnside	0	15	93	188	296	0	15	102	117
Campbelltown City Council	1	12	79	164	256	1	12	90	103
City of Charles Sturt	4	39	256	651	950	4	44	310	358
Town of Gawler	1	6	32	104	143	1	6	40	47
City of Holdfast Bay	0	16	75	181	272	0	18	86	104
Light Regional Council	2	4	21	36	63	2	4	24	30
City of Marion	1	28	177	473	679	1	31	211	243
City of Mitcham	4	26	159	455	644	4	29	190	223
Mount Barker District Council	3	18	64	175	260	3	20	83	106
City of Norwood Payneham & St Peters	1	24	131	373	529	1	25	169	195
City of Onkaparinga	6	58	283	570	917	6	83	405	494
City of Playford	1	47	234	568	850	1	53	312	366
City of Prospect	1	5	65	155	226	1	6	72	79
City of Port Adelaide Enfield	5	38	315	889	1247	5	40	370	415
City of Salisbury	2	49	316	802	1169	2	54	408	464
City of Tea Tree Gully	0	14	120	274	408	0	16	150	166
City of Unley	2	9	69	220	300	2	9	82	93
Town of Walkerville	0	2	43	112	157	0	2	57	59
City of West Torrens	0	32	184	515	731	0	34	215	249
Total	40	523	3021	7586	11170	40	587	3731	4358

Table 24a: Crashes and Casualties by Local Government Area & Severity, Rural: Council Roads

Local Government Area	Crashes					Casualties			
	Fatal Crashes	Serious Injury Crashes	Minor Injury Crashes	Property Damage Crashes	ALL CRASHES	Fatalities	Serious Injuries	Minor Injuries	ALL CASUALTIES
Adelaide Hills Council, The	0	0	0	0	0	0	0	0	0
Adelaide Plains Council	0	4	5	7	16	0	4	8	12
Alexandrina Council	1	5	19	47	72	1	7	26	34
Anangu Pitjantjatjara Yankunytjatjara	0	1	0	3	4	0	4	0	4
The Barossa Council	3	7	12	37	59	4	11	16	31
Barunga West Council	0	0	0	3	3	0	0	0	0
Berri Barmera Council	0	2	5	8	15	0	3	8	11
District Council of Ceduna	0	0	0	4	4	0	0	0	0
Clare and Gilbert Valleys Council	0	1	7	14	22	0	1	8	9
District Council of Cleve	1	1	0	3	5	1	2	0	3
District Council of Coober Pedy	0	0	3	1	4	0	0	3	3
Coorong District Council	0	3	8	8	19	0	3	9	12
Copper Coast Council	0	3	7	11	21	0	3	8	11
District Council of Elliston	1	0	1	4	6	1	1	4	6
The Flinders Ranges Council	0	0	0	0	0	0	0	0	0
District Council of Franklin Harbour	0	1	1	3	5	0	2	1	3
Regional Council of Goyder	0	1	4	5	10	0	1	6	7
District Council of Grant	0	2	8	13	23	0	2	14	16
Kangaroo Island Council	2	5	9	15	31	2	9	18	29
District Council of Karoonda East Murray	0	0	0	0	0	0	0	0	0
District Council of Kimba	0	0	0	0	0	0	0	0	0
Kingston District Council	0	0	1	1	2	0	0	3	3
Light Regional Council	1	4	7	17	29	1	4	9	14
District Council of Lower Eyre Peninsula	0	2	2	8	12	0	2	2	4
District Council of Loxton Waikerie	0	2	9	10	21	0	2	9	11
Mid Murray Council	1	2	7	15	25	1	2	10	13
Sub-total	10	46	115	237	408	11	63	162	236

Table 24a: Crashes and Casualties by Local Government Area & Severity, Rural: Council Roads (cont.)

Local Government Area	Crashes				Casualties				
	Fatal Crashes	Serious Injury Crashes	Minor Injury Crashes	Property Damage Crashes	ALL CRASHES	Fatalities	Serious Injuries	Minor Injuries	ALL CASUALTIES
City of Mount Gambier	0	3	17	35	55	0	3	18	21
District Council of Mount Remarkable	0	1	5	1	7	0	1	5	6
Rural City of Murray Bridge	2	3	15	21	41	2	3	19	24
Naracoorte Lucindale Council	0	3	2	14	19	0	5	2	7
Northern Areas Council	0	1	2	2	5	0	1	2	3
District Council of Orreroo Carrieton	0	0	0	0	0	0	0	0	0
Pastoral Unincorporated	0	0	1	0	1	0	0	1	1
District Council of Peterborough	0	0	0	1	1	0	0	0	0
Port Augusta City Council	2	2	7	8	19	2	2	8	12
City of Port Lincoln	0	2	6	17	25	0	2	7	9
Port Pirie Regional Council	0	5	10	30	45	0	5	17	22
Renmark Paringa Council	1	0	1	13	15	1	0	3	4
District Council of Robe	0	2	2	1	5	0	2	2	4
Municipal Council of Roxby Downs	0	0	1	4	5	0	0	1	1
Southern Mallee District Council	1	0	0	2	3	1	0	0	1
District Council of Streaky Bay	0	1	3	1	5	0	1	5	6
Tatiara District Council	0	2	3	9	14	0	3	3	6
District Council of Tumby Bay	0	0	1	1	2	0	0	1	1
City of Victor Harbor	0	3	15	16	34	0	3	17	20
Wakefield Regional Council	1	2	4	9	16	1	3	4	8
Wattle Range Council	0	3	6	5	14	0	3	8	11
City of Whyalla	0	5	7	36	48	0	5	7	12
Wudinna District Council	0	1	1	1	3	0	1	1	2
District Council of Yankalilla	0	2	5	10	17	0	3	5	8
Yorke Peninsula Council	1	6	8	24	39	1	8	10	19
Sub-total	8	47	122	261	438	8	54	146	208
TOTAL	18	93	237	498	846	19	117	308	444

Table 24b: Crashes and Casualties by Local Government Area & Severity, Rural: Departmental Roads

Local Government Area	Crashes					Casualties			
	Fatal Crashes	Serious Injury Crashes	Minor Injury Crashes	Property Damage Crashes	ALL CRASHES	Fatalities	Serious Injuries	Minor Injuries	ALL CASUALTIES
Adelaide Hills Council, The	0	0	0	0	0	0	0	0	0
Adelaide Plains Council	1	5	3	13	22	1	6	4	11
Alexandrina Council	1	10	19	57	87	1	13	35	49
Anangu Pitjantjatjara Yankunytjatjara	0	0	0	0	0	0	0	0	0
The Barossa Council	5	2	8	46	61	6	6	10	22
Barunga West Council	0	1	5	6	12	0	1	6	7
Berri Barmera Council	0	1	6	20	27	0	2	12	14
District Council of Ceduna	0	0	1	6	7	0	0	2	2
Clare and Gilbert Valleys Council	2	3	12	20	37	2	3	15	20
District Council of Cleve	0	0	1	0	1	0	0	1	1
District Council of Coober Pedy	0	0	0	2	2	0	0	0	0
Coorong District Council	1	3	10	25	39	1	3	12	16
Copper Coast Council	0	0	8	18	26	0	0	12	12
District Council of Elliston	0	0	1	3	4	0	0	1	1
The Flinders Ranges Council	0	0	0	3	3	0	0	0	0
District Council of Franklin Harbour	0	0	0	3	3	0	0	0	0
Regional Council of Goyder	0	3	5	14	22	0	4	6	10
District Council of Grant	1	1	6	12	20	1	1	6	8
Kangaroo Island Council	0	2	4	10	16	0	2	10	12
District Council of Karoonda East Murray	0	1	0	3	4	0	1	2	3
District Council of Kimba	0	0	1	4	5	0	0	1	1
Kingston District Council	1	0	5	6	12	1	2	5	8
Light Regional Council	1	4	15	31	51	1	4	20	25
District Council of Lower Eyre Peninsula	0	0	1	11	12	0	0	1	1
District Council of Loxton Waikerie	2	3	11	24	40	2	3	15	20
Mid Murray Council	2	6	9	18	35	2	6	12	20
Sub-total	17	45	131	355	548	18	57	188	263

Table 24b: Crashes and Casualties by Local Government Area & Severity, Rural: Departmental Roads (cont.)

Local Government Area	Crashes					Casualties			
	Fatal Crashes	Serious Injury Crashes	Minor Injury Crashes	Property Damage Crashes	ALL CRASHES	Fatalities	Serious Injuries	Minor Injuries	ALL CASUALTIES
City of Mount Gambier	0	4	10	34	48	0	4	13	17
District Council of Mount Remarkable	1	2	4	4	11	2	4	4	10
Rural City of Murray Bridge	1	5	8	46	60	1	7	10	18
Naracoorte Lucindale Council	1	1	7	13	22	1	1	10	12
Northern Areas Council	1	3	5	9	18	1	3	6	10
District Council of Orreroo Carrieton	0	0	2	1	3	0	0	2	2
Pastoral Unincorporated	4	12	23	37	76	5	14	32	51
District Council of Peterborough	0	1	0	6	7	0	1	0	1
Port Augusta City Council	1	2	4	21	28	1	2	8	11
City of Port Lincoln	0	2	5	12	19	0	2	5	7
Port Pirie Regional Council	1	1	8	15	25	1	1	10	12
Renmark Paringa Council	1	2	8	19	30	1	3	19	23
District Council of Robe	1	0	2	3	6	1	0	2	3
Municipal Council of Roxby Downs	0	0	0	0	0	0	0	0	0
Southern Mallee District Council	0	1	1	7	9	0	1	2	3
District Council of Streaky Bay	0	1	3	4	8	0	1	5	6
Tatiara District Council	1	1	8	11	21	2	1	9	12
District Council of Tumby Bay	0	0	3	1	4	0	0	5	5
City of Victor Harbor	1	3	11	17	32	1	6	13	20
Wakefield Regional Council	0	5	15	26	46	0	5	25	30
Wattle Range Council	3	3	6	21	33	3	4	7	14
City of Whyalla	0	1	3	13	17	0	1	4	5
Wudinna District Council	0	0	2	0	2	0	0	2	2
District Council of Yankalilla	1	3	10	18	32	1	3	12	16
Yorke Peninsula Council	1	2	9	16	28	1	2	10	13
Sub-total	19	55	157	354	585	22	66	215	303
TOTAL	36	100	288	709	1133	40	123	403	566

Table 24c: Crashes and Casualties by Local Government Area & Severity, Rural: All Roads

Local Government Area	Crashes				Casualties				
	Fatal Crashes	Serious Injury Crashes	Minor Injury Crashes	Property Damage Crashes	ALL CRASHES	Fatalities	Serious Injuries	Minor Injuries	ALL CASUALTIES
Adelaide Hills Council, The	0	0	0	0	0	0	0	0	0
Adelaide Plains Council	1	9	8	20	38	1	10	12	23
Alexandrina Council	2	15	38	104	159	2	20	61	83
Anangu Pitjantjatjara Yankunytjatjara	0	1	0	3	4	0	4	0	4
The Barossa Council	8	9	20	83	120	10	17	26	53
Barunga West Council	0	1	5	9	15	0	1	6	7
Berri Barmera Council	0	3	11	28	42	0	5	20	25
District Council of Ceduna	0	0	1	10	11	0	0	2	2
Clare and Gilbert Valleys Council	2	4	19	34	59	2	4	23	29
District Council of Cleve	1	1	1	3	6	1	2	1	4
District Council of Coober Pedy	0	0	3	3	6	0	0	3	3
Coorong District Council	1	6	18	33	58	1	6	21	28
Copper Coast Council	0	3	15	29	47	0	3	20	23
District Council of Elliston	1	0	2	7	10	1	1	5	7
The Flinders Ranges Council	0	0	0	3	3	0	0	0	0
District Council of Franklin Harbour	0	1	1	6	8	0	2	1	3
Regional Council of Goyder	0	4	9	19	32	0	5	12	17
District Council of Grant	1	3	14	25	43	1	3	20	24
Kangaroo Island Council	2	7	13	25	47	2	11	28	41
District Council of Karoonda East Murray	0	1	0	3	4	0	1	2	3
District Council of Kimba	0	0	1	4	5	0	0	1	1
Kingston District Council	1	0	6	7	14	1	2	8	11
Light Regional Council	2	8	22	48	80	2	8	29	39
District Council of Lower Eyre Peninsula	0	2	3	19	24	0	2	3	5
District Council of Loxton Waikerie	2	5	20	34	61	2	5	24	31
Mid Murray Council	3	8	16	33	60	3	8	22	33
Sub-total	27	91	246	592	956	29	120	350	499

Table 24c: Crashes and Casualties by Local Government Area & Severity, Rural: All Roads (cont.)

Local Government Area	Crashes				Casualties				
	Fatal Crashes	Serious Injury Crashes	Minor Injury Crashes	Property Damage Crashes	ALL CRASHES	Fatalities	Serious Injuries	Minor Injuries	ALL CASUALTIES
City of Mount Gambier	0	7	27	69	103	0	7	31	38
District Council of Mount Remarkable	1	3	9	5	18	2	5	9	16
Rural City of Murray Bridge	3	8	23	67	101	3	10	29	42
Naracoorte Lucindale Council	1	4	9	27	41	1	6	12	19
Northern Areas Council	1	4	7	11	23	1	4	8	13
District Council of Orroroo Carrieton	0	0	2	1	3	0	0	2	2
Pastoral Unincorporated	4	12	24	37	77	5	14	33	52
District Council of Peterborough	0	1	0	7	8	0	1	0	1
Port Augusta City Council	3	4	11	29	47	3	4	16	23
City of Port Lincoln	0	4	11	29	44	0	4	12	16
Port Pirie Regional Council	1	6	18	45	70	1	6	27	34
Renmark Paringa Council	2	2	9	32	45	2	3	22	27
District Council of Robe	1	2	4	4	11	1	2	4	7
Municipal Council of Roxby Downs	0	0	1	4	5	0	0	1	1
Southern Mallee District Council	1	1	1	9	12	1	1	2	4
District Council of Streaky Bay	0	2	6	5	13	0	2	10	12
Tatiara District Council	1	3	11	20	35	2	4	12	18
District Council of Tumby Bay	0	0	4	2	6	0	0	6	6
City of Victor Harbor	1	6	26	33	66	1	9	30	40
Wakefield Regional Council	1	7	19	35	62	1	8	29	38
Wattle Range Council	3	6	12	26	47	3	7	15	25
City of Whyalla	0	6	10	49	65	0	6	11	17
Wudinna District Council	0	1	3	1	5	0	1	3	4
District Council of Yankalilla	1	5	15	28	49	1	6	17	24
Yorke Peninsula Council	2	8	17	40	67	2	10	20	32
Sub-total	27	102	279	615	1023	30	120	361	511
TOTAL	54	193	525	1207	1979	59	240	711	1010

Table 25: Top Intersections with highest number of Casualty Crashes 2021

Intersection	Current Year	Previous Years			
	2021	2020	2019	2018	2017
HAMPSTEAD ROAD - GRAND JUNCTION ROAD	19	25	22	14	15
DAWS ROAD - (MAIN) SOUTH ROAD	19	15	17	11	12
FULLARTON ROAD - DEQUETTEVILLE TERRACE	18	25	28	35	28
HENLEY BEACH ROAD - (MAIN) SOUTH ROAD	18	6	11	13	9
MAIN NORTH ROAD - GRAND JUNCTION ROAD	18	18	22	25	20
PORTRUSH ROAD - PAYNEHAM ROAD	17	15	24	14	17
SAINTS ROAD - MAIN NORTH ROAD	17	8	9	7	5
STURT ROAD - MORPHETT ROAD	16	5	10	7	7
STURT ROAD - MARION ROAD	15	12	15	20	19
WAR MEMORIAL - WEST DRIVE - PARK TERRACE	15	7	13	8	5
SHEPHERDS HILL ROAD - MAIN ROAD	15	9	9	3	6
GREENHILL ROAD - FULLARTON ROAD	15	8	6	8	2
MCINTYRE ROAD - BRIDGE ROAD	15	6	9	9	11
REGENCY ROAD - MAIN NORTH ROAD	15	16	19	16	20
WINSTON / EAST AVENUE - CAULFIELD AVENUE	14	2	2	3	2
CHURCHILL ROAD NORTH - PT WAKEFIELD ROAD	14	5	5	6	5
MUNNO PARA BOULEVARD - MAIN NORTH ROAD	14	5	9	5	3
WALKERVILLE TERRACE - PARK ROAD	14	5	10	2	2
ASCOT AVENUE - NORTH EAST ROAD	14	9	8	13	7
MARION ROAD - HENLEY BEACH ROAD	13	15	12	18	16
MAIN NORTH ROAD - MONTAGUE ROAD	13	9	18	10	6
GLYNBURN ROAD - MONTACUTE - ATHELSTONE ROAD	13	14	8	8	10
ELIZABETH - WEST WAY - ELIZABETH - NORTH WAY	13	3	5	8	6
CRAIGMORE ROAD - MAIN NORTH ROAD	13	5	5	5	8
CROSS ROAD - GLEN OSMOND ROAD	13	15	16	11	7

Table 26: Motor Vehicles Involved in & Responsible for Crashes by Region and Severity

Vehicle Type & Region	Fatal Crashes		Serious Injury Crashes		Minor Injury Crashes		Property Damage Crashes		ALL CRASHES	
	Involved	Responsible	Involved	Responsible	Involved	Responsible	Involved	Responsible	Involved	Responsible
PASSENGER VEHICLES										
Metropolitan	38	20	593	338	5319	2593	12732	6338	18682	9289
Rural	49	41	170	130	609	393	1513	911	2341	1475
Sub-total	87	61	763	468	5928	2986	14245	7249	21023	10764
LIGHT TRUCKS (≤ 4.5 tonnes)										
Metropolitan	0	0	1	0	15	10	54	27	70	37
Rural	0	0	1	1	4	4	6	4	11	9
Sub-total	0	0	2	1	19	14	60	31	81	46
HEAVY VEHICLES¹										
Metropolitan	6	3	14	6	128	73	999	624	1147	706
Rural	7	3	12	4	49	31	181	125	249	163
Sub-total	13	6	26	10	177	104	1180	749	1396	869
BUSES										
Metropolitan	1	0	6	2	23	6	296	149	326	157
Rural	2	0	0	0	4	1	13	7	19	8
Sub-total	3	0	6	2	27	7	309	156	345	165
MOTORCYCLES										
Metropolitan	11	9	141	84	247	133	281	144	680	370
Rural	8	5	54	44	56	48	28	14	146	111
Sub-total	19	14	195	128	303	181	309	158	826	481
BICYCLISTS										
Metropolitan	3	0	85	30	293	91	275	90	656	211
Rural	2	1	12	6	26	14	24	6	64	27
Sub-total	5	1	97	36	319	105	299	96	720	238
OTHER										
Metropolitan	0	0	8	5	22	12	123	68	153	85
Rural	0	0	5	1	7	5	28	20	40	26
Sub-total	0	0	13	6	29	17	151	88	193	111
TOTAL										
Metropolitan	59	32	848	465	6047	2918	14760	7440	21714	10855
Rural	68	50	254	186	755	496	1793	1087	2870	1819
TOTAL	127	82	1102	651	6802	3414	16553	8527	24584	12674

¹ Excludes Buses and other defined special vehicles.

NOTE: Excludes data for crashes where responsibility not attributed to a road user. For example, responsibility not recorded or unriden animal responsible.

Table 27: Crashes and Casualties by Vehicle Movement of Motor Vehicle Responsible and Severity (excl. Pedestrian)

Vehicle Movement of Unit Responsible	Crashes					Casualties			
	Fatal Crashes	Serious Injury Crashes	Minor Injury Crashes	Property Damage Crashes	ALL CRASHES	Fatalities	Serious Injuries	Minor Injuries	ALL CASUALTIES
Right Turn	7	105	729	1532	2373	7	120	989	1116
Left Turn	1	37	210	520	768	1	38	234	273
U Turn	2	11	68	206	287	2	13	79	94
Swerving	1	19	128	698	846	1	21	155	177
Reversing	0	3	12	90	105	0	3	12	15
Stopped on Carriageway	0	0	2	7	9	0	0	2	2
Straight Ahead	69	427	2056	4769	7321	74	514	2568	3156
Entering Private Driveway	0	10	39	107	156	0	11	50	61
Leaving Private Driveway	1	19	99	301	420	1	19	116	136
Parked	0	4	17	23	44	0	5	18	23
Parking - Angle	0	1	4	6	11	0	1	4	5
Parking - Parallel	0	0	7	40	47	0	0	7	7
Unparking - Angle	0	2	2	17	21	0	2	3	5
UnParking - Parallel	0	3	11	83	97	0	3	15	18
Overtaking - on Right	1	9	21	87	118	1	10	31	42
Overtaking - on Left	0	1	9	41	51	0	1	9	10
Other	0	0	0	0	0	0	0	0	0
On Pedestrian Crossing	0	0	0	0	0	0	0	0	0
TOTAL	82	651	3414	8527	12674	87	761	4292	5140

NOTE: Excludes data for crashes where responsibility not attributed to a road user. For example, responsibility not recorded or unriden animal responsible.

Table 28: Crashes and Casualties by Pedestrian Responsible, Movement and Severity

Pedestrian Movement	Crashes					Casualties			
	Fatal Crashes	Serious Injury Crashes	Minor Injury Crashes	Property Damage Crashes	ALL CRASHES	Fatalities	Serious Injuries	Minor Injuries	ALL CASUALTIES
Walking on Footpath	1	0	1	0	2	1	0	1	2
On Pedestrian Crossing	0	0	0	3	3	0	0	0	0
Within 30m of Pedestrian Crossing	0	1	0	1	2	0	1	0	1
Alighted from Parked Vehicle	0	1	3	0	4	0	1	3	4
Walking on Road	4	3	11	10	28	4	3	13	20
Walking on Road - Against the Traffic	0	0	3	0	3	0	0	3	3
Pushing or Working on Vehicle	0	0	1	1	2	0	0	1	1
Playing on Roadway	0	0	0	0	0	0	0	0	0
Crossing without Control	6	38	56	55	155	6	39	60	105
Other (e.g. Police on Traffic Control)	0	1	1	0	2	0	1	1	2
Crossing with Traffic Signals	0	2	7	8	17	0	2	7	9
TOTAL	11	46	83	78	218	11	47	89	147

Table 29: Crashes by Motor Vehicle Type Involved¹ and Severity

Type of Vehicle ¹	Fatal Crashes	Serious Injury Crashes	Minor Injury Crashes	Property Damage Crashes	ALL CRASHES
Passenger Vehicle	72	570	3298	8496	12436
Light Truck (≤ 4.5 tonnes)	0	2	18	59	79
Heavy Truck	12	29	185	1252	1478
Bus	3	6	27	305	341
Motorcycles / Scooters	18	189	299	306	812
Bicycles	5	93	310	293	701
Pedestrian	14	84	174	146	418
Other	0	7	13	21	41

Table 30: Crashes and Casualties by Speed Involvement² and Severity

Speed Involvement ² & Region	Crashes					Casualties			
	Fatal Crashes	Serious Injury Crashes	Minor Injury Crashes	Property Damage Crashes	ALL CRASHES	Fatalities	Serious Injuries	Minor Injuries	ALL CASUALTIES
METROPOLITAN									
Yes	16	116	285	600	1017	16	142	369	527
No	24	407	2736	6986	10153	24	445	3362	3831
Sub-total	40	523	3021	7586	11170	40	587	3731	4358
RURAL									
Yes	25	68	136	190	419	27	91	182	300
No	29	125	389	1017	1560	32	149	529	710
Sub-total	54	193	525	1207	1979	59	240	711	1010
TOTAL	94	716	3546	8793	13149	99	827	4442	5368

¹ The vehicle type categories are not mutually exclusive and must not be added together. It is where the crash has involved at least one of the vehicle types. Where one crash has involved two or more of the same vehicle type, then it has been counted once.

² Speed contribution definition is located under *Definitions & Explanations*.

ROAD CASUALTIES IN 2021

- Road Users
- Seatbelts & Helmets
- Age & Sex Distribution
- Alcohol
- Drug
- Licence
- Involvement & Responsibility

Table 31: Casualties by Road User Type, Severity, Age and Sex

Road User Types	Sex	0-15			16-19			20-24			25-29			30-39			40-49			50-59			60-69			70+			Unknown			ALL CASUALTIES		
		F	SI	MI	F	SI	MI	F	SI	MI	F	SI	MI	F	SI	MI	F	SI	MI	F	SI	MI	F	SI	MI	F	SI	MI	F	SI	MI			
VEHICLE OCCUPANT																																		
Driver	M	0	0	1	4	19	91	5	31	173	1	32	140	5	29	242	3	20	171	10	18	154	5	26	114	7	26	113	0	0	1	40	201	1200
	F	0	0	0	0	17	103	1	14	214	0	14	189	0	17	305	0	21	246	0	13	224	2	14	155	3	21	153	0	0	1	6	131	1590
	Sub-total	0	0	1	4	36	194	6	45	387	1	46	329	5	46	547	3	41	417	10	31	378	7	40	269	10	47	266	0	0	3	46	332	2791
Passenger	M	1	9	100	0	8	40	2	13	30	0	8	22	3	5	22	0	4	13	0	1	14	1	3	14	0	6	18	0	2	3	7	59	276
	F	0	8	149	1	10	86	0	8	50	0	7	39	0	6	53	0	2	38	3	3	49	3	6	41	2	10	56	0	0	8	9	60	569
	Sub-total	1	17	249	1	18	126	2	21	80	0	15	61	3	11	75	0	6	51	3	4	63	4	9	55	2	16	74	0	2	20	16	119	854
MOTORCYCLIST																																		
Rider	M	0	3	3	4	24	38	1	17	31	1	13	26	3	21	55	1	33	29	3	39	49	3	19	33	1	7	7	0	0	0	17	176	271
	F	0	0	0	0	0	6	0	2	2	0	2	2	0	3	4	0	3	5	0	2	3	0	1	1	0	0	1	0	0	0	0	13	24
	Sub-total	0	3	3	4	24	44	1	19	33	1	15	28	3	24	59	1	36	34	3	41	52	3	20	34	1	7	8	0	0	1	17	189	296
Pillion Passenger	M	0	0	0	0	0	0	0	2	0	0	0	0	0	0	0	0	0	0	0	0	0	0	0	0	0	0	0	0	0	0	0	2	0
	F	0	0	1	0	0	0	0	0	0	0	0	0	0	1	0	0	0	1	0	1	2	1	0	1	0	0	0	0	0	0	1	2	5
	Sub-total	0	0	1	0	0	0	0	2	0	0	0	0	0	1	0	0	0	1	0	1	2	1	0	1	0	0	0	0	0	1	4	5	
PEDESTRIAN																																		
M	M	2	7	19	0	3	10	1	1	10	0	2	9	1	4	8	0	2	6	0	7	10	1	3	6	4	5	17	0	0	2	9	34	97
	F	0	3	11	0	2	5	0	5	7	2	7	7	1	4	9	1	5	12	0	2	5	1	4	12	0	17	11	0	1	2	5	50	81
	Sub-total	2	10	30	0	5	15	1	6	17	2	9	16	2	8	17	1	7	18	0	9	15	2	7	18	4	22	28	0	1	6	14	84	180
BICYCLIST																																		
M	M	0	4	26	0	0	11	0	4	20	0	3	15	0	10	40	0	15	44	1	22	48	2	18	28	0	3	16	0	0	3	3	79	251
	F	0	0	6	0	1	1	0	2	3	0	2	8	0	3	11	1	0	10	0	3	10	0	3	6	1	0	1	0	0	0	2	14	56
	Sub-total	0	4	32	0	1	12	0	6	23	0	5	23	0	13	51	1	15	54	1	25	58	2	21	34	1	3	17	0	0	4	5	93	308
OTHER ROAD USER																																		
M	M	0	0	0	0	0	0	0	2	1	0	0	2	0	0	0	0	3	2	0	0	0	0	1	0	0	0	0	0	0	0	0	5	6
	F	0	0	0	0	0	1	0	0	0	0	0	1	0	0	0	0	0	0	0	1	0	0	0	0	0	0	0	0	0	0	0	1	2
	Sub-total	0	0	0	0	0	1	0	2	1	0	0	3	0	0	0	0	3	2	0	1	0	0	1	0	0	0	0	0	0	0	0	6	8
ALL ROAD USERS																																		
M	M	3	23	149	8	54	190	9	70	265	2	58	214	12	69	367	4	77	265	14	87	275	12	69	196	12	47	171	0	2	9	76	556	2101
	F	0	11	167	1	30	202	1	31	276	2	32	246	1	34	382	2	31	312	3	25	293	7	28	216	6	48	222	0	1	11	23	271	2327
	TOTAL	3	34	316	9	84	392	10	101	541	4	90	460	13	103	749	6	108	577	17	112	568	19	97	412	18	95	393	0	3	34	99	827	4442

F - Fatality/Life lost, SI - Serious Injury, MI - Minor Injury

Table 32: Casualties by Unit Type and Severity

Unit Type	Fatalities	Serious Injuries	Minor Injuries	ALL CASUALTIES
Passenger Vehicle	57	440	3580	4077
Light Truck (≤ 4.5 tonnes)	0	1	10	11
Heavy Vehicle ¹	5	9	48	62
Bus	0	1	7	8
Motorcycle	18	193	301	512
Bicycle	5	93	308	406
Pedestrian	14	84	180	278
Other	0	6	8	14
TOTAL	99	827	4442	5368

Table 33: Motor Vehicle Casualties by Position in Vehicle and Severity

(excl. Bicycles)

Position in Vehicle	Fatalities	Serious Injuries	Minor Injuries	ALL CASUALTIES
FRONT SEAT PASSENGER				
Driver	46	332	2791	3169
Middle	0	1	0	1
Left	11	80	528	619
REAR SEAT PASSENGER				
Right	2	14	105	121
Middle	1	5	30	36
Left	2	9	151	162
CHILD NURSED				
Front	0	0	0	1
Rear	0	0	0	0
UTILITY/TRUCK				
Rear	0	1	0	1
VAN				
Passenger	0	0	0	0
BUS				
Passenger	0	1	1	2
MOTORCYCLE				
Rider	17	189	296	502
Passenger	1	4	5	10
TOWED VEHICLE				
Occupant	0	0	0	0
UNKNOWN/OTHER				
	0	8	39	44
Sub-total	80	644	3946	4668
TOTAL²	99	827	4442	5368

¹ Excludes Buses.² Includes not applicable user types.

Table 34: Casualties by Road User Type, Safety Device and Severity

Road User Type & Safety Device Use ¹	Fatalities	Serious Injuries	Minor Injuries	ALL CASUALTIES
DRIVER				
Fitted - Worn	10	17	34	61
Fitted - Not Worn	27	266	2616	2909
Fitted - Unknown if Worn	9	49	137	195
Not Fitted	0	0	4	4
Unknown	0	0	0	0
Sub-total	46	332	2791	3169
PASSENGER				
Fitted - Worn	10	80	749	839
Fitted - Not Worn	4	11	18	33
Fitted - Unknown if Worn	2	21	49	72
Child Restraint - Worn	0	3	29	32
Child Restraint - Not Worn	0	1	6	7
Not Fitted	0	1	3	4
Not Applicable	0	2	0	2
Unknown	0	0	0	0
Sub-total	16	119	854	989
MOTORCYCLE RIDER/PASSENGER				
Helmet Worn	18	178	292	488
Helmet - Not Worn	0	7	4	11
Unknown	0	8	5	13
Sub-total	18	193	301	512
BICYCLIST RIDER/PASSENGER				
Helmet Worn	5	88	286	379
Helmet - Not Worn	0	2	14	16
Unknown	0	3	8	11
Sub-total	5	93	308	406
ALL CASUALTIES				
Device Worn	60	620	3977	4657
Device Not Worn	14	40	83	137
Unknown/Not Applicable	11	83	202	296
Sub-total	85	743	4262	5090
TOTAL²	99	827	4442	5368

¹ Police reporting of safety device usage is often not based on direct observation by police officers and may be reliant upon statements by the casualties themselves or other involved parties.

² Includes not applicable safety device use/users (pedestrians).

Table 35: Driver and Motorcycle Rider Casualties with BAC

Severity	Sex	Blood Alcohol Concentration						Not Tested/ Unknown	TOTAL
		Negative	0.001- 0.049	0.050- 0.079	0.080- 0.149	0.150- 0.199	.200+		
Minor Injury	M	902	20	4	32	27	17	469	1471
	F	940	0	2	6	10	7	648	1613
	Sub-total¹	1843	20	6	39	37	24	1118	3087
Serious Injury	M	279	7	9	20	13	5	44	377
	F	116	2	2	6	1	2	15	144
	Sub-total¹	395	9	11	26	14	7	59	521
Fatalities	M	43	0	1	7	1	5	0	57
	F	5	0	0	0	0	1	0	6
	Sub-total¹	48	0	1	7	1	6	0	63
ALL CASUALTIES	M	1224	27	14	59	41	27	513	1905
	F	1061	2	4	12	11	10	663	1763
	TOTAL¹	2286	29	18	72	52	37	1177	3671

Table 36: Driver and Motorcycle Rider Casualties with Drugs

Age	Sex	Drugs					Combination of drugs ²	Not Tested/ Unknown	TOTAL
		Negative	THC	MDMA	Meth				
Minor Injury	M	860	73	3	25	15	495	1471	
	F	910	24	1	13	4	661	1613	
	Sub-total¹	1772	97	4	38	19	1157	3087	
Serious Injury	M	259	34	0	24	5	55	377	
	F	110	9	0	4	3	18	144	
	Sub-total¹	369	43	0	28	8	73	521	
Fatalities	M	44	5	1	6	1	0	57	
	F	6	0	0	0	0	0	6	
	Sub-total¹	50	5	1	6	1	0	63	
ALL CASUALTIES	M	1163	112	4	55	21	550	1905	
	F	1026	33	1	17	7	679	1763	
	TOTAL¹	2191	145	5	72	28	1230	3671	

¹ Unknown sex included.² Two or more of THC, MDMA or Meth.

Table 37a: Road User Involved in & Responsible for Crashes by Age & Sex:
Fatal Crashes

Age	Sex	Drivers		Motorcycle Riders		Bicycle Riders		Pedestrians		Other Road Users		ALL ROAD USERS	
		Involved	Responsible	Involved	Responsible	Involved	Responsible	Involved	Responsible	Involved	Responsible	Involved	Responsible
0-15	M	0	0	0	0	0	0	2	2	0	0	2	2
	F	0	0	0	0	0	0	0	0	0	0	0	0
	Sub-total¹	0	0	0	0	0	0	2	2	0	0	2	2
16-19	M	6	5	5	2	0	0	0	0	0	0	11	7
	F	0	0	0	0	0	0	0	0	0	0	0	0
	Sub-total¹	6	5	5	2	0	0	0	0	0	0	11	7
20-24	M	7	6	1	1	0	0	1	1	0	0	9	8
	F	3	3	0	0	0	0	0	0	0	0	3	3
	Sub-total¹	10	9	1	1	0	0	1	1	0	0	12	11
25-29	M	4	4	1	1	0	0	0	0	0	0	5	5
	F	3	0	0	0	0	0	2	2	0	0	5	2
	Sub-total¹	7	4	1	1	0	0	2	2	0	0	10	7
30-39	M	10	7	3	3	0	0	1	1	0	0	14	11
	F	5	1	0	0	0	0	1	1	0	0	6	2
	Sub-total¹	15	8	3	3	0	0	2	2	0	0	20	13
40-49	M	12	4	1	1	0	0	0	0	0	0	13	5
	F	2	1	0	0	1	0	1	0	0	0	4	1
	Sub-total¹	14	5	1	1	1	0	1	0	0	0	17	6
50-59	M	19	15	3	2	1	0	0	0	0	0	23	17
	F	2	1	0	0	0	0	0	0	0	0	2	1
	Sub-total¹	21	16	3	2	1	0	0	0	0	0	25	18
60-69	M	8	5	4	3	2	1	1	1	0	0	15	10
	F	5	3	0	0	0	0	1	0	0	0	6	3
	Sub-total¹	13	8	4	3	2	1	2	1	0	0	21	13
70+	M	9	8	1	1	0	0	4	3	0	0	14	12
	F	4	4	0	0	1	0	0	0	0	0	5	4
	Sub-total¹	13	12	1	1	1	0	4	3	0	0	19	16
Unknown	M	0	0	0	0	0	0	0	0	0	0	0	0
	F	0	0	0	0	0	0	0	0	0	0	0	0
	Sub-total¹	1	0	0	0	0	0	0	0	0	0	1	0
ALL AGES	M	75	54	19	14	3	1	9	8	0	0	106	77
	F	24	13	0	0	2	0	5	3	0	0	31	16
	TOTAL¹	100	67	19	14	5	1	14	11	0	0	138	93

¹ Unknown sex included.

Table 37b: Road User Involved in & Responsible for Crashes by Age & Sex:
Serious Injury Crashes

Age	Sex	Drivers		Motorcycle Riders		Bicycle Riders		Pedestrians		Other Road Users		ALL ROAD USERS	
		Involved	Responsible	Involved	Responsible	Involved	Responsible	Involved	Responsible	Involved	Responsible	Involved	Responsible
0-15	M	0	0	3	2	4	2	7	6	0	1	14	11
	F	0	0	0	0	0	0	3	2	0	0	3	2
	Sub-total¹	0	0	3	2	4	2	10	8	0	1	17	13
16-19	M	39	31	24	19	0	0	3	1	0	0	66	51
	F	25	22	0	0	1	1	2	2	0	0	28	25
	Sub-total¹	64	53	24	19	1	1	5	3	0	0	94	76
20-24	M	78	51	18	14	4	1	1	0	0	0	101	66
	F	33	15	2	2	2	1	5	3	0	0	42	21
	Sub-total¹	111	66	20	16	6	2	6	3	0	0	143	87
25-29	M	61	48	14	8	3	0	3	0	0	0	81	56
	F	35	23	2	1	2	1	7	3	0	0	46	28
	Sub-total¹	96	71	16	9	5	1	10	3	0	0	127	84
30-39	M	77	50	23	16	9	3	4	3	0	0	113	72
	F	55	33	3	2	3	1	4	2	0	0	65	38
	Sub-total¹	132	83	26	18	12	4	8	5	0	0	178	110
40-49	M	49	26	33	21	13	4	2	2	0	0	97	53
	F	37	21	3	1	0	0	6	3	0	0	46	25
	Sub-total¹	86	47	36	22	13	4	8	5	0	0	143	78
50-59	M	63	34	41	24	22	9	7	3	0	0	133	70
	F	30	14	2	1	3	1	2	0	0	0	37	16
	Sub-total¹	93	48	43	25	25	10	9	3	0	0	170	86
60-69	M	47	29	19	11	18	7	3	2	0	0	87	49
	F	25	15	1	0	3	1	4	2	0	0	33	18
	Sub-total¹	72	44	20	11	21	8	7	4	0	0	120	67
70+	M	53	38	7	6	4	1	5	4	0	0	69	49
	F	37	22	0	0	0	0	17	7	0	0	54	29
	Sub-total¹	90	60	7	6	4	1	22	11	0	0	123	78
Unknown	M	1	1	0	0	0	0	0	0	0	0	1	1
	F	0	0	0	0	0	0	1	1	0	0	1	1
	Sub-total¹	23	11	0	0	1	0	1	1	1	0	26	12
ALL AGES	M	468	308	182	121	77	27	35	21	0	1	762	478
	F	277	165	13	7	14	6	51	25	0	0	355	203
	TOTAL¹	767	483	195	128	92	33	86	46	1	1	1141	691

¹ Unknown sex included.

Table 37c: Road User Involved in & Responsible for Crashes by Age & Sex:
Minor Injury Crashes

Age	Sex	Drivers		Motorcycle Riders		Bicycle Riders		Pedestrians		Other Road Users		ALL ROAD USERS	
		Involved	Responsible	Involved	Responsible	Involved	Responsible	Involved	Responsible	Involved	Responsible	Involved	Responsible
0-15	M	1	1	4	4	26	15	19	8	0	0	50	28
	F	0	0	0	0	6	5	11	7	0	0	17	12
	Sub-total¹	1	1	4	4	32	20	30	15	0	0	67	40
16-19	M	232	166	38	29	11	0	10	7	0	0	291	202
	F	199	124	6	4	1	1	5	2	0	0	211	131
	Sub-total¹	431	290	44	33	12	1	15	9	0	0	502	333
20-24	M	436	275	31	20	21	4	10	8	0	0	498	307
	F	366	181	3	2	3	2	8	4	0	0	380	189
	Sub-total¹	802	456	34	22	24	6	18	12	0	0	878	496
25-29	M	383	231	26	14	15	6	8	3	0	0	432	254
	F	300	154	2	1	7	2	7	1	0	0	316	158
	Sub-total¹	685	385	28	15	22	8	15	4	0	0	750	412
30-39	M	621	295	54	29	41	9	8	5	1	0	725	338
	F	536	222	4	1	10	1	9	3	0	0	559	227
	Sub-total¹	1157	517	58	30	51	10	17	8	1	0	1284	565
40-49	M	447	205	30	15	46	19	7	4	0	0	530	243
	F	430	186	5	3	12	4	10	3	0	0	457	196
	Sub-total¹	877	391	35	18	58	23	17	7	0	0	987	439
50-59	M	396	175	50	25	48	12	11	4	0	0	505	216
	F	353	132	3	2	10	4	5	3	0	0	371	141
	Sub-total¹	749	307	53	27	58	16	16	7	0	0	876	357
60-69	M	290	134	34	20	29	6	6	3	0	0	359	163
	F	248	105	2	2	6	3	12	5	0	0	268	115
	Sub-total¹	539	240	36	22	35	9	18	8	0	0	628	279
70+	M	256	171	7	6	16	7	17	6	0	0	296	190
	F	216	135	1	1	1	1	11	2	0	0	229	139
	Sub-total¹	473	306	8	7	17	8	28	8	0	0	526	329
Unknown	M	6	4	0	0	2	1	2	2	0	0	10	7
	F	4	3	0	0	0	0	2	1	0	0	6	4
	Sub-total¹	304	226	3	3	8	4	6	5	2	0	323	238
ALL AGES	M	3068	1657	274	162	255	79	98	50	1	0	3696	1948
	F	2652	1242	26	16	56	23	80	31	0	0	2814	1312
	TOTAL¹	6018	3119	303	181	317	105	180	83	3	0	6821	3488

¹ Unknown sex included.

Table 37d: Road User Involved in & Responsible for Crashes by Age & Sex:
Property Damage Crashes

Age	Sex	Drivers		Motorcycle Riders		Bicycle Riders		Pedestrians		Other Road Users		ALL ROAD USERS	
		Involved	Responsible	Involved	Responsible	Involved	Responsible	Involved	Responsible	Involved	Responsible	Involved	Responsible
0-15	M	3	3	0	0	29	13	8	4	0	1	40	21
	F	0	0	0	0	2	0	8	5	0	2	10	7
	Sub-total¹	3	3	0	0	32	13	17	10	0	3	52	29
16-19	M	688	516	33	18	10	5	8	6	0	1	739	546
	F	465	312	3	1	0	0	2	1	0	0	470	314
	Sub-total¹	1155	830	36	19	10	5	10	7	0	1	1211	862
20-24	M	1137	728	31	16	4	2	4	0	0	0	1176	746
	F	782	423	3	1	3	0	2	1	0	0	790	425
	Sub-total¹	1922	1153	34	17	7	2	6	1	0	0	1969	1173
25-29	M	1066	596	22	10	13	0	6	4	0	0	1107	610
	F	695	361	1	0	1	1	1	1	0	0	698	363
	Sub-total¹	1765	961	23	10	14	1	7	5	0	0	1809	977
30-39	M	1671	891	37	19	23	2	8	3	0	0	1739	915
	F	1011	485	2	1	6	0	9	2	0	0	1028	488
	Sub-total¹	2682	1376	39	20	29	2	17	5	0	0	2767	1403
40-49	M	1298	656	35	19	40	5	9	3	2	0	1384	683
	F	917	397	2	1	7	2	4	2	0	0	930	402
	Sub-total¹	2217	1055	37	20	47	7	13	5	2	0	2316	1087
50-59	M	1192	556	35	14	28	6	4	2	1	0	1260	578
	F	632	259	2	1	4	1	3	0	0	0	641	261
	Sub-total¹	1824	815	37	15	32	7	7	2	1	0	1901	839
60-69	M	830	387	17	8	15	7	3	1	3	0	868	403
	F	471	222	0	0	3	1	2	1	1	0	477	224
	Sub-total¹	1301	609	17	8	18	8	5	2	4	0	1345	627
70+	M	620	377	4	1	5	1	7	2	0	0	636	381
	F	401	245	0	0	1	0	6	3	0	0	408	248
	Sub-total¹	1021	622	4	1	6	1	13	5	0	0	1044	629
Unknown	M	29	21	2	1	15	4	9	6	0	0	55	32
	F	16	11	1	1	0	0	5	2	0	0	22	14
	Sub-total¹	1171	826	61	48	98	47	54	36	3	1	1387	958
ALL AGES	M	8534	4731	216	106	182	45	66	31	6	2	9004	4915
	F	5390	2715	14	6	27	5	42	18	1	2	5474	2746
	TOTAL¹	15061	8250	288	158	293	93	149	78	10	5	15801	8584

¹ Unknown sex included.

Table 37e: Road User Involved in & Responsible for Crashes by Age & Sex:
All Crashes

Age	Sex	Drivers		Motorcycle Riders		Bicycle Riders		Pedestrians		Other Road Users		ALL ROAD USERS	
		Involved	Responsible	Involved	Responsible	Involved	Responsible	Involved	Responsible	Involved	Responsible	Involved	Responsible
0-15	M	4	4	7	6	59	30	36	20	0	2	106	62
	F	0	0	0	0	8	5	22	14	0	2	30	21
	Sub-total¹	4	4	7	6	68	35	59	35	0	4	138	84
16-19	M	965	718	100	68	21	5	21	14	0	1	1107	806
	F	689	458	9	5	2	2	9	5	0	0	709	470
	Sub-total¹	1656	1178	109	73	23	7	30	19	0	1	1818	1278
20-24	M	1658	1060	81	51	29	7	16	9	0	0	1784	1127
	F	1184	622	8	5	8	3	15	8	0	0	1215	638
	Sub-total¹	2845	1684	89	56	37	10	31	17	0	0	3002	1767
25-29	M	1514	879	63	33	31	6	17	7	0	0	1625	925
	F	1033	538	5	2	10	4	17	7	0	0	1065	551
	Sub-total¹	2553	1421	68	35	41	10	34	14	0	0	2696	1480
30-39	M	2379	1243	117	67	73	14	21	12	1	0	2591	1336
	F	1607	741	9	4	19	2	23	8	0	0	1658	755
	Sub-total¹	3986	1984	126	71	92	16	44	20	1	0	4249	2091
40-49	M	1806	891	99	56	99	28	18	9	2	0	2024	984
	F	1386	605	10	5	20	6	21	8	0	0	1437	624
	Sub-total¹	3194	1498	109	61	119	34	39	17	2	0	3463	1610
50-59	M	1670	780	129	65	99	27	22	9	1	0	1921	881
	F	1017	406	7	4	17	6	10	3	0	0	1051	419
	Sub-total¹	2687	1186	136	69	116	33	32	12	1	0	2972	1300
60-69	M	1175	555	74	42	64	21	13	7	3	0	1329	625
	F	749	345	3	2	12	5	19	8	1	0	784	360
	Sub-total¹	1925	901	77	44	76	26	32	15	4	0	2114	986
70+	M	938	594	19	14	25	9	33	15	0	0	1015	632
	F	658	406	1	1	3	1	34	12	0	0	696	420
	Sub-total¹	1597	1000	20	15	28	10	67	27	0	0	1712	1052
Unknown	M	36	26	2	1	17	5	11	8	0	0	66	40
	F	20	14	1	1	0	0	8	4	0	0	29	19
	Sub-total¹	1499	1063	64	51	107	51	61	42	6	1	1737	1208
ALL AGES	M	12145	6750	691	403	517	152	208	110	7	3	13568	7418
	F	8343	4135	53	29	99	34	178	77	1	2	8674	4277
	TOTAL¹	21946	11919	805	481	707	232	429	218	14	6	23901	12856

¹ Unknown sex included.

Table 38: Drivers & Motorcycle Riders Involved in & Responsible for Crashes by Licence Type & Severity

Licence Type	Fatal Crashes		Serious Injury Crashes		Minor Injury Crashes		Property Damage Crashes		ALL CRASHES	
	Involved	Responsible	Involved	Responsible	Involved	Responsible	Involved	Responsible	Involved	Responsible
Learner's Permit	6	4	36	31	91	62	148	95	281	192
Probationary Licence	1	1	11	8	41	27	95	76	148	112
Full Licence	86	56	709	412	4952	2333	11705	5848	17452	8649
Unlicensed	10	8	56	51	121	105	232	181	419	345
Conditional Licence	0	0	0	0	0	0	0	0	0	0
Provisional 1 Licence	4	3	51	45	319	226	841	616	1215	890
Provisional 2 Licence	7	6	63	42	444	283	999	647	1513	978
Disqualified Licence	4	3	7	6	21	18	27	24	59	51
Unknown	1	0	29	16	332	246	1302	921	1664	1183
TOTAL	119	81	962	611	6321	3300	15349	8408	22751	12400

Table 39a: Drivers & Motorcycle Riders Responsible for Crashes by Licence Type and Age: Fatal Crashes

Age Group	Learner's Permit	Probationary Licence	Full Licence	Unlicensed	Conditional Licence	P1 Licence	P2 Licence	Disqualified	Unknown	TOTAL
0-15	0	0	0	0	0	0	0	0	0	0
16-19	2	0	0	0	0	2	3	0	0	7
20-24	2	0	4	1	0	0	3	0	0	10
25-29	0	1	3	1	0	0	0	0	0	5
30-39	0	0	5	4	0	1	0	1	0	11
40-49	0	0	4	1	0	0	0	1	0	6
50-59	0	0	16	1	0	0	0	1	0	18
60-69	0	0	11	0	0	0	0	0	0	11
70+	0	0	13	0	0	0	0	0	0	13
Unknown	0	0	0	0	0	0	0	0	0	0
TOTAL	4	1	56	8	0	3	6	3	0	81

Table 39b: Drivers & Motorcycle Riders Responsible for Crashes by Licence Type and Age:
Serious Injury Crashes

Age Group	Learner's Permit	Probationary Licence	Full Licence	Unlicensed	Conditional Licence	P1 Licence	P2 Licence	Disqualified	Unknown	TOTAL
0-15	0	0	0	2	0	0	0	0	0	2
16-19	19	0	1	6	0	27	19	0	0	72
20-24	7	0	42	7	0	12	13	0	1	82
25-29	3	2	56	8	0	3	5	1	2	80
30-39	0	3	72	19	0	1	4	1	1	101
40-49	2	1	55	7	0	1	0	2	1	69
50-59	0	1	68	0	0	1	1	2	0	73
60-69	0	1	52	2	0	0	0	0	0	55
70+	0	0	66	0	0	0	0	0	0	66
Unknown	0	0	0	0	0	0	0	0	11	11
TOTAL	31	8	412	51	0	45	42	6	16	611

Table 39c: Drivers & Motorcycle Riders Responsible for Crashes by Licence Type and Age:
Minor Injury Crashes

Age Group	Learner's Permit	Probationary Licence	Full Licence	Unlicensed	Conditional Licence	P1 Licence	P2 Licence	Disqualified	Unknown	TOTAL
0-15	0	0	0	5	0	0	0	0	0	5
16-19	37	0	7	11	0	149	117	1	1	323
20-24	12	3	280	19	0	46	108	4	6	478
25-29	4	4	327	19	0	15	25	4	2	400
30-39	7	10	464	27	0	7	22	5	5	547
40-49	0	8	372	12	0	5	8	1	3	409
50-59	1	1	320	5	0	2	3	0	2	334
60-69	0	1	253	2	0	0	0	3	3	262
70+	0	0	310	3	0	0	0	0	0	313
Unknown	1	0	0	2	0	2	0	0	224	229
TOTAL	62	27	2333	105	0	226	283	18	246	3300

Table 39d: Drivers & Motorcycle Riders Responsible for Crashes by Licence Type and Age:
Property Damage Crashes

Age Group	Learner's Permit	Probationary Licence	Full Licence	Unlicensed	Conditional Licence	P1 Licence	P2 Licence	Disqualified	Unknown	TOTAL
0-15	0	0	0	3	0	0	0	0	0	3
16-19	57	0	15	12	0	450	307	1	7	849
20-24	15	10	776	34	0	92	222	4	17	1170
25-29	7	13	821	25	0	34	55	4	12	971
30-39	10	25	1209	62	0	26	41	7	16	1396
40-49	4	18	994	25	0	8	12	5	9	1075
50-59	1	7	797	13	0	3	3	1	5	830
60-69	1	1	600	6	0	2	1	1	5	617
70+	0	0	616	1	0	1	1	1	3	623
Unknown	0	2	20	0	0	0	5	0	847	874
TOTAL	95	76	5848	181	0	616	647	24	921	8408

Table 39e: Drivers & Motorcycle Riders Responsible for Crashes by Licence Type and Age:
All Crashes

Age Group	Learner's Permit	Probationary Licence	Full Licence	Unlicensed	Conditional Licence	P1 Licence	P2 Licence	Disqualified	Unknown	TOTAL
0-15	0	0	0	10	0	0	0	0	0	10
16-19	115	0	23	29	0	628	446	2	8	1251
20-24	36	13	1102	61	0	150	346	8	24	1740
25-29	14	20	1207	53	0	52	85	9	16	1456
30-39	17	38	1750	112	0	35	67	14	22	2055
40-49	6	27	1425	45	0	14	20	9	13	1559
50-59	2	9	1201	19	0	6	7	4	7	1255
60-69	1	3	916	10	0	2	1	4	8	945
70+	0	0	1005	4	0	1	1	1	3	1015
Unknown	1	2	20	2	0	2	5	0	1082	1114
TOTAL	192	112	8649	345	0	890	978	51	1183	12400

Reference Information for South Australia

- Population
- Licence
- Vehicle Information

Table 40: Estimated Population¹ by Age and Sex

Age Group	Sex		ALL PERSONS
	Male	Female	
0-15	169092	160506	329598
16-19	41209	39178	80387
20-24	56779	53896	110675
25-29	58790	57289	116079
30-39	116134	118845	234979
40-49	107102	108570	215672
50-59	110977	115600	226577
60-69	101661	108699	210360
70+	113201	135715	248916
TOTAL	874945	898298	1773243

Table 41: Licence and Permit Holders² by Age and Sex

Age Group	Sex			ALL PERSONS
	Male	Female	Unknown	
16-19	32,930	31,876	98	64904
20-24	49,261	46,823	116	96200
25-29	56,069	52,017	94	108180
30-39	113,225	111,196	136	224557
40-49	104,547	102,706	88	207341
50-59	110,039	107,833	51	217923
60-69	100,607	98,938	31	199576
70+	99,556	91,002	14	190,572
TOTAL	666234	642391	628	1309253

¹ Population as of June 2021. Source: Australian Bureau of Statistics, *Australian Demographic Statistics*, cat.no. 3101.0.

² At December 2021. Source: TRUMPS database, Registration & Licensing Section, Department for Infrastructure and Transport.

Table 42: Motor Vehicle on Register¹ by Vehicle Type

Type of Vehicle	ALL VEHICLES
Cars & Station Wagons	1,117,212
Utilities	200,992
Panel Vans	39,613
Rigid & Other Trucks	42,467
Articulated Trucks	9,253
Other Commercials ²	16,429
Buses	4,172
Motorcycles	49,223
Other ³	47,421
TOTAL	1,526,782

Table 43: Vehicle Kilometres Travelled⁴ (VKT) by Vehicle Type

Type of Vehicle	TOTAL VKT ('000 000)
Passenger Vehicles	11,924
Light Commercials	3,073
Rigid Trucks	537
Articulated Trucks	653
Non-freight Carrying Trucks	21
Motorcycles	66
Buses	119
TOTAL	16,392

¹ At June 2021. Excludes trailers, caravans, plant and equipment. Source: TRUMPS database, Registration & Licensing Section, Department for Infrastructure and Transport.

² Includes animal transporter vehicle, drilling rig vehicle, earth moving vehicle, garbage truck, industrial vehicle, mobile crane vehicle, tanker vehicle.

³ Includes ambulance, armoured vehicle, fork lift, land implement vehicle, golf buggy, tractors.

⁴ Travel for the year ended June 2020. Source: Australian Bureau of Statistics, *Survey of Motor Vehicle Use*, cat. no. 9208.0.