



## ROAD CRASHES in South Australia

Statistical Summary of Road Crashes & Casualties in 2012



**Government of South Australia**  
Department of Planning,  
Transport and Infrastructure

**Prepared by the Road Crash Information Unit**

77 Grenfell St  
Adelaide, SA 5001

Telephone: (08) 8343 2250  
Facsimile: (08) 8343 2978  
Postal Address: Department for Planning, Transport & Infrastructure, GPO 1533, Adelaide, SA, 5001.

Only available in electronic format from the Department of Planning, Transport and Infrastructure's Road Safety website:  
<http://www.dpti.sa.gov.au/roadsafety/>

**Further Information**

For further information concerning road crash statistics for South Australia, write to the

Road Crash Information Unit  
Road Asset Management Section  
Transport Services Division  
Department of Planning, Transport and Infrastructure  
GPO Box 1533,  
ADELAIDE SA 5000  
**Phone:** (08) 8343 2250  
**Email:** [DPTI.enquiriesadministrator@sa.gov.au](mailto:DPTI.enquiriesadministrator@sa.gov.au)

*Full Title:* Road Crashes in South Australia: Statistical Summary of Road Crashes & Casualties in 2012

*Type of Report and Period Covered:* Statistical, 2012

*Pages:* 63

*Key Words:* crash, crash rate, casualty, serious injury, age, blood alcohol concentration, day, hour, fatality, month, road user, severity, sex, vehicle movement, year

**The data presented in this report is for information purposes only and should be used with care before drawing conclusions not contained in this report. Numbers may not match with future publications due to the database continually being updated with new information.**

---

# Summary Data for 2012

	Number	Percentage
<b>CRASHES</b>		
Fatal Crashes	86	0.38%
Serious Injury Crashes	637	2.83%
Minor Injury Crashes	5 369	23.86%
Property Damage Crashes	16 412	72.93%
<b>TOTAL</b>	<b>22 504</b>	<b>100.00%</b>
<b>CASUALTIES</b>		
Fatalities	94	1.26%
Serious Injuries	761	10.18%
Minor Injuries	6 618	88.56%
<b>TOTAL</b>	<b>7 473</b>	<b>100.00%</b>
<b>OTHER DATA</b>		
<b>Vehicles on register<sup>1</sup></b>	<b>1 285 337</b>	
Fatalities per 10 000 vehicles	0.73	
Serious Injuries per 10 000 vehicles	5.92	
Casualties per 10 000 vehicles	58.14	
<b>Licence holders<sup>2</sup></b>	<b>1 154 578</b>	
Driver/rider fatalities per 10 000 licence holders	0.56	
Driver/rider serious injuries per 10 000 licence holders	4.01	
Driver/rider casualties per 10 000 licence holders	42.41	
<b>Population<sup>3</sup></b>	<b>1 654 778</b>	
Fatalities per 100 000 population	5.68	
Serious Injuries per 100 000 population	45.99	
Casualties per 100 000 population	451.60	

---

<sup>1</sup> Excludes tractors, trailers, caravans, plant and equipment. Source: Registration and Licensing, Dept for Planning, Transport & Infrastructure, June 2012.

<sup>2</sup> No. of individual licence holders (including learner's permits). Source: Registration and Licensing, Dept for Planning, Transport & Infrastructure, June 2012.

<sup>3</sup> Estimated resident population. Source: *Australian Demographic Statistics*, ABS, cat. no. 3101.0, June 2012.

---

# Contents

<b>SUMMARY DATA FOR 2012</b>	<b>1</b>
<b>KEY POINTS 2012</b>	<b>4</b>
<b>PREFACE</b>	<b>5</b>
How crashes are processed?	5
Scope	5
Related Publications	5
Acknowledgements	5
Definitions & Explanatory Notes	6
<b>CRASH AND CASUALTY TRENDS</b>	<b>8</b>
Table 1 Trend in South Australia, 1993 – 2012	9
Figure 1 Data Trends in SA, 1993 – 2012	10
Figure 2 Fatality Rates in SA, 1993 – 2012	10
Table 2 Comparison with other Australian States and countries, 2011	11
Table 3 Road Crash Fatalities by Age Group compared with Deaths of All Causes, 2011	11
Table 4 Casualties by Road User Type and Severity, 1993 – 2012	12
Table 5 Casualties by Age Group and Severity, 1993 – 2012	13
Table 6 Casualties by Sex and Severity, 1993 – 2012	14
Table 7 Crashes and Casualties by Region and Severity, 1993 – 2012	15
<b>ROAD CRASHES in 2012</b>	<b>16</b>
<b>Time Distribution of Crashes</b>	
Table 8 Crashes and Casualties during Holiday Periods by Severity	17
Table 9a Casualty Crashes by Time of Day, Day of Week	18
Figure 3 Casualty Crashes by Time of Day, Day of Week	18
Table 9b Casualties by Time of Day, Day of Week	19
Table 9c All Crashes by Time of Day, Day of Week	19
Table 10 Crashes and Casualties by Month of Year and Severity	20
<b>Crash Type</b>	
Table 11a Crashes and Casualties by Crash Type and Severity: <i>Metropolitan Adelaide</i>	21
Table 11b Crashes and Casualties by Crash Type and Severity: <i>Rural</i>	21
Table 11c Crashes and Casualties by Crash Type and Severity: <i>South Australia</i>	22
Table 12 Hit Fixed Object Crashes by Object First Hit and Severity	22
Table 13 Single Vehicle Crashes by Motor Vehicle Type and Severity	22
<b>Location &amp; Distribution of Crashes</b>	
Table 14a Crashes and Casualties by Location Type and Severity: <i>Metropolitan Adelaide</i>	23
Table 14b Crashes and Casualties by Location Type and Severity: <i>Rural</i>	23
Table 14c Crashes and Casualties by Location Type and Severity: <i>South Australia</i>	24
Table 15a Crashes and Casualties by Traffic Control and Severity: <i>Metropolitan Adelaide</i>	25
Table 15b Crashes and Casualties by Traffic Control and Severity: <i>Rural</i>	25
Table 15c Crashes and Casualties by Traffic Control and Severity: <i>South Australia</i>	26
Table 16 Crashes and Casualties by Area Speed Limit, Region & Severity	27
Table 17 Crashes and Casualties by Light Conditions, Region & Severity	27
Table 18 Crashes and Casualties by Vertical Alignment, Region & Severity	28
Table 19 Crashes and Casualties by Horizontal Alignment, Region & Severity	28
Table 20 Crashes and Casualties by Road Moisture, Region & Severity	29
Table 21 Crashes and Casualties by Route and Severity	29
Table 22a Crashes and Casualties by Local Government Area and Severity: <i>Metropolitan Adelaide: Local Government Roads</i>	30
Table 22b Crashes and Casualties by Local Government Area and Severity: <i>Metropolitan Adelaide: DPTI Roads</i>	31
Table 22c Crashes and Casualties by Local Government Area and Severity: <i>Metropolitan Adelaide: All Roads</i>	32
Table 23a Crashes and Casualties by Local Government Area and Severity: <i>Rural: Local Government Roads</i>	33
Table 23b Crashes and Casualties by Local Government Area and Severity: <i>Rural: DPTI Roads</i>	35
Table 23c Crashes and Casualties by Local Government Area and Severity: <i>Rural: All Roads</i>	37
Table 24a Top Intersections, Casualty Crashes, Base Year 2012	39
Table 24b Top Intersections, All Crashes, Base Year 2012	40
<b>Motor Vehicle Type, Movement &amp; Involvement</b>	
Table 25 Motor Vehicles Involved in and Responsible for Crashes by Crash Type and Severity	41
Table 26 Crashes and Casualties by Vehicle Movement of Motor Vehicle Responsible and Severity	44

Table 27	Crashes and Casualties Involving Pedestrians by Pedestrian Responsible Movement and Severity	44
Table 28	Crashes by Motor Vehicle Type Involved and Severity	45
<b>CASUALTIES in 2012</b>		<b>46</b>
<b>Road User</b>		
Table 29	Casualties by Road User Type, Severity, Age & Sex	47
Table 30	Casualties by Unit Type and Severity	48
Table 31	Passenger Vehicle Casualties by Position in Vehicle and Severity	48
<b>Seatbelts &amp; Helmets</b>		
Table 32	Casualties by Casualty Type, Safety Device and Severity	49
<b>Alcohol</b>		
Table 33a	Driver and Motorcyclist Casualties by Sex, Age, BAC: <i>Fatal</i>	50
Table 33b	Driver and Motorcyclist Casualties by Sex, Age, BAC: <i>Serious Injury</i>	51
Table 33c	Driver and Motorcyclist Casualties by Sex, Age, BAC: <i>Minor Injury</i>	52
<b>Responsibility</b>		
Table 34a	Road User Involved In and Responsible for Crashes by Age & Sex: <i>Fatal Crash</i>	53
Table 34b	Road User Involved In and Responsible for Crashes by Age & Sex: <i>Serious Injury Crash</i>	54
Table 34c	Road User Involved In and Responsible for Crashes by Age & Sex: <i>Minor Injury Crash</i>	55
Table 34d	Road User Involved In and Responsible for Crashes by Age & Sex: <i>Property Damage Crash</i>	56
Table 34e	Road User Involved In and Responsible for Crashes by Age & Sex: <i>All Crashes</i>	57
Table 35	Drivers & Motorcycle Riders Involved in and Responsible for Crashes by Licence Type and Severity	58
Table 36a	Drivers & Motorcycle Riders Responsible for Crashes by Sex, Age and Licence Type: <i>Fatal Crash</i>	58
Table 36b	Drivers & Motorcycle Riders Responsible for Crashes by Sex, Age and Licence Type: <i>Serious Injury Crash</i>	59
Table 36c	Drivers & Motorcycle Riders Responsible for Crashes by Sex, Age and Licence Type: <i>Minor Injury Crash</i>	59
Table 36d	Drivers & Motorcycle Riders Responsible for Crashes by Sex, Age and Licence Type: <i>Property Damage Crash</i>	60
Table 36d	Drivers & Motorcycle Riders Responsible for Crashes by Sex, Age and Licence Type: <i>All Crashes</i>	60
<b>REFERENCE INFORMATION</b>		<b>61</b>
<b>Demographic Data</b>		
Table 37	Estimated Population by Age and Sex	62
Table 38	Licence and Permit Holders by Age and Sex	62
<b>Vehicle Information</b>		
Table 39	Motor Vehicle on Register by Vehicle Type	63
Table 40	Vehicle Kilometres Travelled	63

---

# Key Points 2012

- A total of 22 504 crashes were processed for South Australia in 2012 – 86 fatal crashes, 637 serious injury crashes, 5369 minor injury crashes and 16 412 property damage crashes. This resulted in 94 fatalities, 761 serious injuries and 6618 minor injuries.
- The estimated cost of crashes to the community in 2012 was \$1 728 million<sup>1</sup>
- The 94 fatalities that occurred in 2012 were the lowest since official DPTI recording began in 1967. The fatality rate per 100 000 population was 5.68.
- The number of persons serious injured in 2012 was down by 170 (18%) from 931 the previous year to 761 this year – well below the 2020 Serious Injury target of less than 800 set out in *South Australia's Road Safety Strategy 2020 – Towards Zero Together*.
- Rural South Australian roads accounted for 18% of all crashes, but 66% of fatal crashes.
- Single Vehicle crashes made up 21% of the 22 504 crashes with 45% occurring in rural South Australia. 60% of fatal crashes were single vehicle crashes, of which two thirds occurred in rural areas.
- Of the drivers and passengers killed in 2012, 34% were not wearing a seatbelt at the time of the crash; 2% of those vehicle occupants reported injured were recorded as not wearing a seatbelt.
- Three cyclists were killed in 2012, all 3 were wearing a helmet; 2% of those reported injured failed to wear a helmet.
- 15 fatalities in 2012 were motorcyclists (13 riders and 2 pillion passengers). All riders were male, both pillion passengers were female. Eighty-nine percent of those motorcyclists (incl. pillion passengers) reported injured were male.
- Pedestrians in 2012 were more likely to receive fatal or serious injuries when involved in a crash – 22% of pedestrians involved in a crash were either killed or seriously injured compared to 18% amongst motorcycle riders involved, 11% amongst bicycle riders involved and 1% among vehicle drivers involved.
- 22 people aged over the age of 70 were killed in 2012. They accounted for 23% of total fatalities, 10% of serious injuries and 7% of minor injuries. 6 out of 10 of pedestrian fatalities were over the age of 70 and 15% of reported pedestrian serious injuries were of this age. However, 12% of the population is represented by people of this age.
- There were 17 fatalities recorded in the 16-24 age group. This is a reduction on the 5 year average (2007-2011) of 29 fatalities per year.
- 22% of the all drivers and motorcycle riders who were killed had a blood alcohol concentration over 0.05g/100ml. Of those known tested that were seriously injured 17% had a BAC over 0.05. All male casualties were almost over 3 times more likely to be over the limit compared to females.
- 11% of all drivers and motorcycle riders involved in fatal crashes were young persons age 16-24. This age group only represents 14% of licence holders.

---

<sup>1</sup> Willingness to Pay values used

---

# Preface

This publication presents information compiled from police reported crashes in South Australia for 2012 and is the forty-fifth edition in an annual series that commenced with 1967 data.

## How crashes are reported and processed?

---

Currently when a reportable road crash occurs, South Australia Police (SAPOL) collect the data through vehicle crash reports, which are entered into their Vehicle Collision System (VCS). The reports are then electronically forwarded to the Road Crash Information Unit of the Department for Planning, Transport and Infrastructure (DPTI) for further processing and geocoding. The information is checked for accuracy and consistency to ensure the reliability of any published statistics. Processed crash data is stored in the DPTI 'Road Crash Database' (TARS).

Details in this publication may differ from information previously released or published and represents a revision of the information. Road crash information contained in this publication is derived from TARS.

## Scope

---

The crash statistics included in this publication are confined to those crashes which:

- were reported to the police;
- occurred on a road defined in the Road Traffic Act 1961;
- were defined by the ATSB publication "*Guidelines For Determining Events as Road Crashes in Australia*" (published July 2000)
- involved at least one moving vehicle
- involved at least one person being killed or injured, vehicle towed away, or total property damage of \$3 000 or greater

From 1 July 2003, DPTI only processed 'property damage' crashes with an aggregated damage value of \$3 000 or greater. This represents a change from previous reporting, whereby the value of 'property damage' crashes processed by DPTI since January 1998 was \$1 000.

## Related Publications

---

All monthly and annual statistical reports are available from DPTI's Road Safety website

**Road Fatalities in South Australia (monthly)**

**Road Fatalities Involving Heavy Vehicles in South Australia (monthly)**

**Road Crash Serious Injuries in South Australia (monthly)**

**Road Crash Serious Injuries Involving Heavy Vehicles in South Australia (monthly)**

**Road Crashes in South Australia** annual reports

**South Australian Road Safety Progress Report (Quarterly)**

**Road Safety** Fact Sheets

## Acknowledgements

---

Acknowledgment is extended to the South Australian Police for supply of reported road crash reports.

---

## Definitions & Explanatory Notes

---

<b>BAC</b>	Blood Alcohol Concentration (mg/100mL).
<b>Bicycle</b>	Any two or three wheeled device operated solely by pedals and propelled by human power
<b>Bicycle Rider</b>	A person occupying the controlling position of a bicycle
<b>Bicyclist</b>	A bicycle or passenger.
<b>Driver</b>	A controller of a motor vehicle other than a motorcycle or bicycle.
<b>Drug</b>	Methamphetamine, Ecstasy and/or THC (cannabis)
<b>DPTI</b>	Department of Planning, Transport & Infrastructure
<b>Casualty</b>	Any person killed or injured as a result of a crash.
<b>Casualty Crash</b>	Crash where someone had been killed or injured as a result of the crash.
<b>Fatal Crash</b>	A crash where there is at least one fatality.
<b>Fatality</b>	A person who dies within 30 days of a crash as a result of injuries sustained in that crash.
<b>Heavy Vehicle</b>	Heavy vehicle includes the following vehicle types: Rigid truck, Semi Trailer, Bus, B Double.
<b>Intersection Crash</b>	A crash for which the first impact occurs at or within 20 metre radius of an intersection.
<b>Metropolitan</b>	Metropolitan Adelaide comprises of the following local government areas: Adelaide, Burnside, Campbelltown, Charles Sturt, Holdfast shores, Marion, Mitcham, Norwood, Payneham & St Peters, Onkaparinga, Playford, Port Adelaide & Enfield, Prospect, Salisbury, Tea Tree Gully, Unley, Walkerville, West Torrens, Adelaide Hills, Mount Barker, Gawler.
<b>Mid-block Crash</b>	A crash that occurs between two intersections.
<b>Minor Injury</b>	A person who sustains injuries requiring medical or surgical treatment, either by a doctor or in a hospital, but is not admitted to hospital, as a result of a road crash and who does not die as a result of those injuries within 30 days of the crash.
<b>Minor Injury Crash</b>	A crash where at least one person sustains injuries by not person is admitted to hospital or dies within 30 days of the crash.
<b>Motor Vehicle</b>	Any road vehicle which is mechanically or electrically powered but not operated on rails.
<b>Motorcycle</b>	Any mechanically or electrically propelled two or three wheeled with or without side-car includes solo motorcycle, motorcycle with sidecar, motor scooter, mini-bike, and scooter.
<b>Motorcycle Rider</b>	A person occupying the controlling portion of a motorcycle.
<b>Motorcyclist</b>	Motorcycle rider or pillion passenger
<b>Other Road User</b>	Occupants/controllers of animal drawn vehicles, ridden animals, railway vehicles, tram, small wheeled vehicle, and other defined special vehicle.
<b>Other Vehicle Type</b>	Animal drawn vehicles, ridden animals, railway vehicles, tram, small wheeled vehicle user, and other defined special vehicle
<b>Passenger</b>	Any person, other than the controller, who is in, on, boarding, entering, alighting or falling from a road vehicle at the time of the crash, provided a portion of the person is in/on the road vehicle.
<b>Passenger Vehicle</b>	Include all cars and car derivatives including 4WDs, vans, light truck and station wagons. Excludes heavy vehicles, motorcycles and bicycles.
<b>Pedestrian</b>	Any person who is standing, walking, playing, lying on the road or alighting or boarding a road vehicle at the time of the crash. It does not include those that have fallen from a vehicle. Also Includes riders and passengers of motorised wheelchairs/wheelchairs except where stated.
<b>Pillion Passenger</b>	A passenger on but not controlling a motorcycle.



---

<b>Property Damage Crash</b>	A crash resulting in property damage in excess of \$3000 and in which no person is injured or dies within 30 days of the crash. Or when one vehicle has been towed away.
<b>Road Crash</b>	Any apparent unpremeditated event reported to the police and resulting in death, injury or property damage in excess of the prescribed amount, and attributed to the movement of the road vehicle on a road.
<b>Road User</b>	Any person who is a pedestrian, rider, or the occupant of a road vehicle.
<b>Rural</b>	Area outside of metropolitan Adelaide. Comprises of the following local government areas: Barossa, Light, Mallala, Ceduna, Cleve, Elliston, Franklin Harbor, Kimba, Lower Eyre Peninsula, Port Lincoln, Streaky Bay, Tumby Bay, Whyalla, Cooper Pedy, Finders Rangers, Port Augusta, Roxby Downs, Alexandrina, Kangaroo Island, Victor Harbor, Yankalilla, Grant, Mount Gambier, Naracoorte Lucindale, Robe, Tatiara, Wattle Range, Berri & Barmera, Karoonda East Murray, Loxton Waikerie, Mid Murray, Murray Bridge, Renmark Paringa, Southern Mallee, The Coorong, Barunga West, Calre & Gilbert Valleys, Copper Coast, Goyder, Mount Remarkable, Northern Areas, Orroroo/Carrieton, Peterborough, Port Pirie, Wakefield, Yorke Peninsula.
<b>Serious Casualty</b>	A fatality or serious injury
<b>Serious Casualty Crash</b>	A crash where at least one fatality or serious injury occurs.
<b>Serious Injury</b>	A person who sustains injuries and is admitted to hospital for a duration of 24 hours or more as a result of a road crash and who does not die as a result of those injuries within 30 days of the crash.
<b>Serious Injury Crash</b>	A non-fatal crash in which at least one person is seriously injured.
<b>Vehicle Occupant</b>	Driver or passenger in passenger, heavy or unknown motor vehicle

# CRASH & CASUALTY TRENDS

---

Historical Data

Fatality Rates

Interstate and International Comparisons

Causes of Death

Road User Type

Age & Sex

Region

**Table 1: Trends in South Australia, 1993 - 2012**

Year	Crashes						Casualties				Vehicles on Register <sup>1</sup> ('000)	Licence Holders <sup>2</sup> ('000)	Population <sup>3</sup> ('000)	Vehicle kilometers traveled <sup>4</sup> ('000 000)	Fatalities per			
	Fatal Crashes	Serious Injury Crashes	Minor Injury Crashes	TOTAL Casualty Crashes	Property Damage Crashes	ALL Crashes	Fatalities	Serious Injuries	Minor Injuries	ALL Casualties					10, 000 vehicles	10,000 licence holders <sup>5</sup>	100,000 population	100 million VKT
1993	191	1189	5079	6459	-	-	218	1549	6513	8280	916	947	1461	-	2.38	1.18	14.92	-
1994	145	1184	5081	6410	32419	38829	163	1514	6492	8169	931	964	1466	-	1.75	0.91	11.12	-
1995	164	1185	5097	6446	32844	39290	182	1521	6638	8341	945	975	1469	13195	1.93	0.98	12.39	1.38
1996	162	1324	5023	6509	32432	38941	181	1720	6775	8676	959	979	1474	-	1.89	1.09	12.28	-
1997	124	1168	5138	6430	32442	38872	149	1509	6716	8374	969	995	1481	-	1.54	0.80	10.06	-
1998	152	1225	5551	6928	32664	39592	168	1566	7345	9079	995	995	1490	13974	1.69	0.85	11.28	1.20
1999	132	1238	6047	7417	34287	41704	153	1607	8071	9831	1010	1012	1498	13081	1.52	0.85	10.21	1.17
2000	151	1229	6433	7813	33172	40985	166	1627	8501	10294	1011	1025	1505	13153	1.64	1.04	11.03	1.26
2001	137	1245	6351	7733	33041	40774	154	1603	8497	10254	1023	1045	1512	15085	1.51	0.85	10.19	1.02
2002	138	1199	6249	7586	32525	40111	154	1538	8382	10074	1045	1047	1519	14855	1.47	0.88	10.14	1.04
2003	135	1169	5786	7090	23220	30310	156	1470	7597	9223	1034	1052	1527	14963	1.51	0.85	10.21	1.04
2004	128	1070	5518	6716	15186	21902	139	1330	7294	8763	1049	1072	1533	15241	1.32	0.92	9.07	0.91
2005	126	994	5103	6223	14580	20803	147	1296	6626	8069	1065	1094	1542	14533	1.38	0.84	9.53	1.01
2006	104	1091	4992	6187	14089	20276	117	1357	6473	7947	1085	1042	1568	15535	1.08	0.77	7.46	0.75
2007	108	1083	5277	6468	14829	21297	125	1361	6944	8430	1107	1073	1584	14212	1.13	0.62	7.89	0.88
2008	87	996	5614	6697	14771	21468	99	1218	7173	8490	1171	1094	1602	-	0.85	0.56	6.18	-
2009	104	909	5216	6229	15098	21327	119	1109	6621	7849	1201	1135	1625	-	0.99	0.65	7.32	-
2010	105	886	5422	6413	15496	21909	118	1050	6905	8073	1226	1136	1645	14615	0.96	0.64	7.17	0.81
2011	95	780	5474	6349	16583	22932	103	931	6900	7934	1250	1141	1657	-	0.81	0.53	6.22	-
2012	86	637	5369	6092	16412	22504	94	761	6618	7473	1285	1155	1655	16313	0.73	0.56	5.68	0.58

<sup>1</sup> At 30 June. Excludes tractors, trailers, caravans, plant and equipment. Source: TRUMPS database, Registration & Licensing Section, DPTI

<sup>2</sup> At 30 June. Source: TRUMPS database, Registration & Licensing Section, DPTI

<sup>3</sup> Population as of 30 June. Source: Australian Bureau of Statistics, *Australian Demographic Statistics*, cat.no. 3101.0.

<sup>4</sup> Travel for the year ended 30 June. Source: Australian Bureau of Statistics, *Survey of Motor Vehicle Use*, cat. no. 9208.0. From 2010 report is being released biannually. Data before this are 12 months ending 30 October

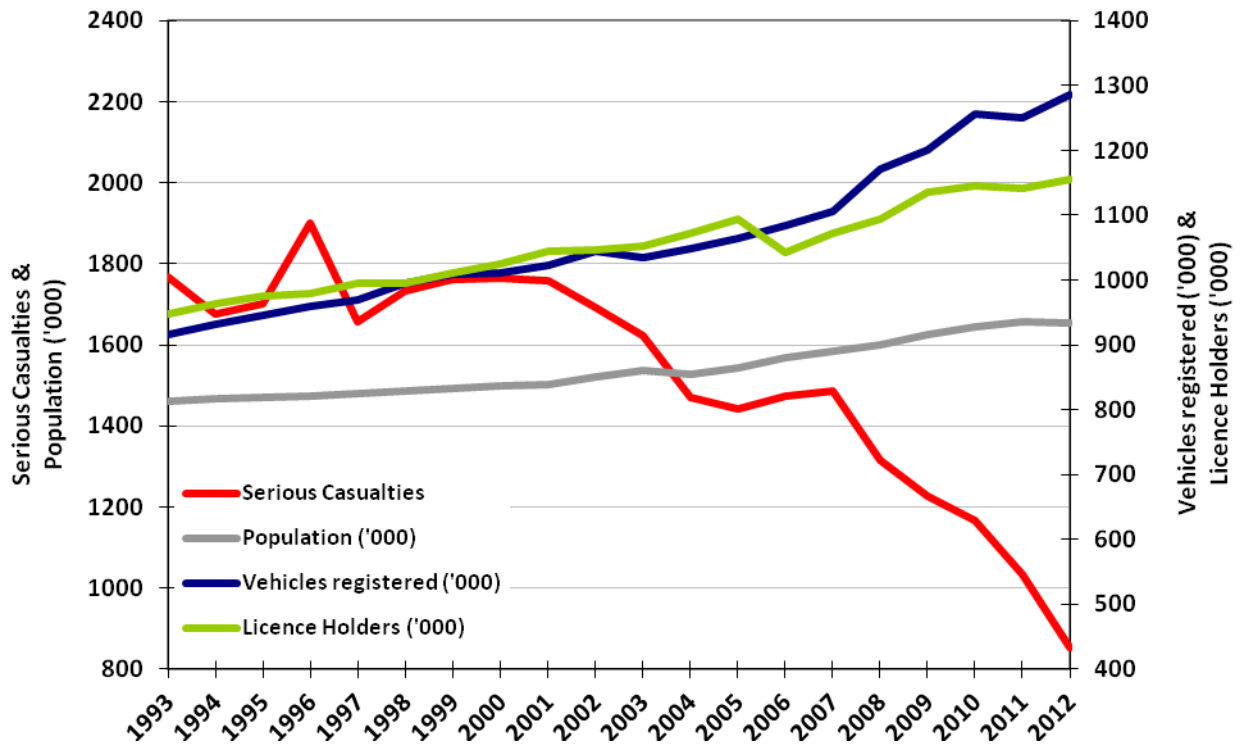
<sup>5</sup> Licence holder fatality rates are based on drivers and riders fatalities only.

**Notes:**

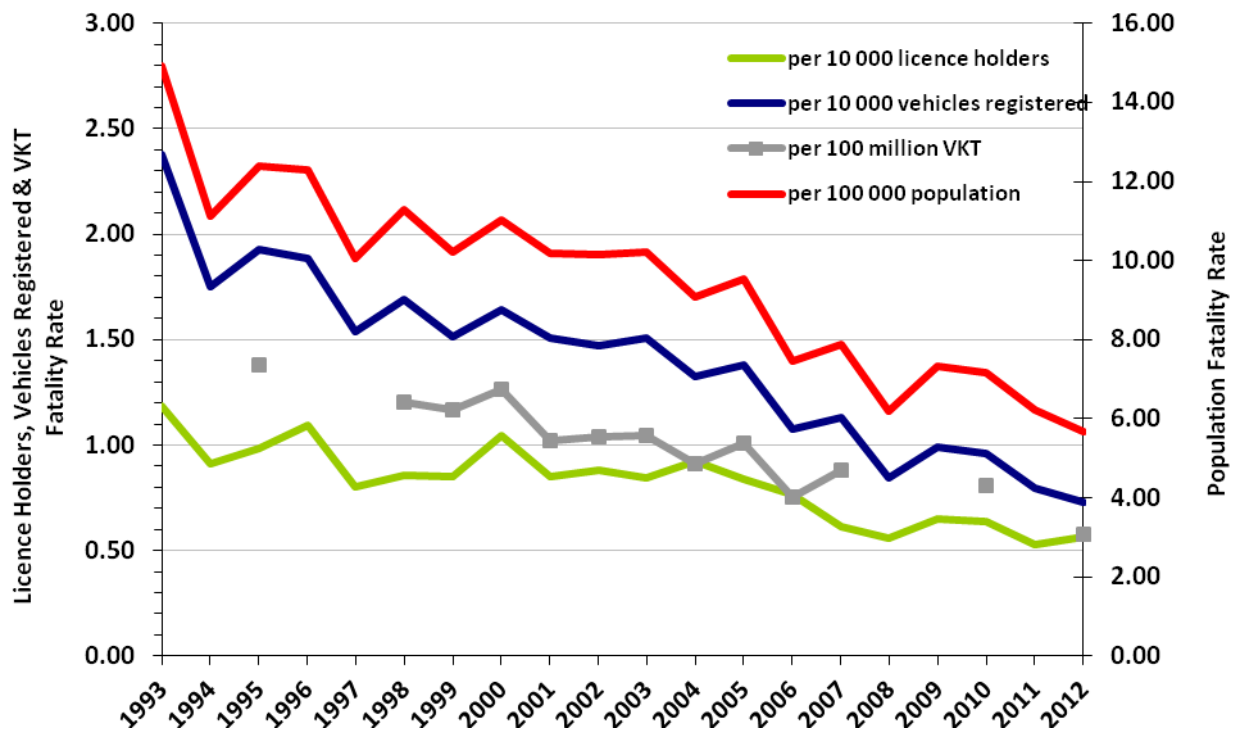
In 1993, only casualty crash data was available

From 1 July 2003, DPTI began to only process property damage crashes where the value was \$3000 or greater or the vehicle was towed away regardless of the damage value

**Figure 1: Data Trends in South Australia, 1993 - 2012**



**Figure 2: Fatality Rates in South Australia, 1993 - 2012**



**Table 2: Comparison with other Australian States<sup>1</sup> and countries<sup>2</sup>, 2011**

	Fatalities	Vehicles on register <sup>3</sup> ('000)	Population <sup>4</sup> ('000)	Fatalities per 10 000 vehicles	Fatalities per 100 000 population
<b>SOUTH AUSTRALIA</b>	<b>103</b>	<b>1 265</b>	<b>1 657</b>	<b>0.8</b>	<b>6.2</b>
New South Wales	364	4 778	7 211	0.8	5.0
Victoria	287	4 198	5 535	0.7	5.2
Queensland	269	3 402	4 474	0.8	6.0
Western Australia	180	1 913	2 362	0.9	7.6
Tasmania	24	419	511	0.6	4.7
Australian Capital Territory	6	259	368	0.2	1.6
Northern Territory	44	137	231	3.2	19.0
<b>AUSTRALIA</b>	<b>1 277</b>	<b>16 371</b>	<b>22 349</b>	<b>0.8</b>	<b>5.7</b>
CANADA	2 025	22 811	34 484	0.9	5.9
DENMARK	220	-	5 561	-	4.0
FRANCE	3 963	40 457	65 027	1.0	6.1
GERMANY	4 009	52 945	81 752	0.8	4.9
JAPAN	5 507	90 288	127 799	0.6	4.3
NETHERLANDS	546	9 980	16 656	0.5	3.3
NEW ZEALAND	284	3 234	4 405	0.9	6.4
NORWAY	168	-	4 920	-	3.4
SWEDEN	319	5 618	9 416	0.6	3.4
UNITED KINGDOM	1 960	35 282	63 233	0.6	3.1
UNITED STATES	32 367	257 512	311 592	1.3	10.4

**Table 3: Road Crash Fatalities by Age Group compared with Deaths of All Causes, 2011**

Age Groups	Deaths from All Causes <sup>5</sup>	Road Fatalities <sup>6</sup>	
		Number	% of All Deaths
0-14	88	4	5%
15-19	38	6	16%
20-24	51	5	10%
25-29	64	9	14%
30-34	81	6	7%
35-39	106	16	15%
40-49	366	22	6%
50-59	799	12	2%
60-69	1 368	4	0%
70+	9 703	19	0%
Unknown	-	-	-
<b>TOTAL</b>	<b>12 664</b>	<b>103</b>	<b>1%</b>

<sup>1</sup> Australian data based on information published by the Bureau of Infrastructure, Transport and Regional Economics (BITRE) for 2012.

<sup>2</sup> Other data based on information from BITRE report, *International Road Safety Comparisons 2011* published June 2013.

<sup>3</sup> Australian figures (except SA) are as at 30 June 2011. Source: Australian Bureau of Statistics, *Motor Vehicle Census Australia*, cat. no. 3303.0. These figures may not agree with registration statistics for individual States and Territories. Data for SA sourced from TRUMPS, as of 30 June 2011.

<sup>4</sup> Population as of 30 June. Source: Australian Bureau of Statistics, *Australian Demographic Statistics*, cat.no. 3101.0

<sup>5</sup> Source: Australian Bureau of Statistics, *Deaths, Australia*, cat.no. 3302.0.

<sup>6</sup> Source: DPTI's TARS road crash database

**Table 4: Casualties by Road User Type and Severity, 1993 - 2012**

Year	Vehicle Occupant						Motorcyclist						Pedestrian			Bicyclist			Other Road User			ALL ROAD USERS		
	Driver			Passenger			Rider			Pillion Passenger			F	SI	MI	F	SI	MI	F	SI	MI	F	SI	MI
	F	SI	MI	F	SI	MI	F	SI	MI	F	SI	MI												
<b>1993</b>	<b>85</b>	<b>658</b>	<b>3407</b>	<b>64</b>	<b>461</b>	<b>1755</b>	<b>27</b>	<b>164</b>	<b>382</b>	<b>3</b>	<b>18</b>	<b>45</b>	<b>33</b>	<b>174</b>	<b>437</b>	<b>6</b>	<b>73</b>	<b>485</b>	<b>0</b>	<b>1</b>	<b>2</b>	<b>218</b>	<b>1549</b>	<b>6513</b>
1994	68	668	3409	39	417	1766	20	187	393	1	18	46	30	147	430	5	76	448	0	1	0	163	1514	6492
1995	84	648	3571	36	432	1823	12	153	359	0	22	50	40	186	411	8	80	421	2	0	3	182	1521	6638
1996	92	779	3615	40	522	1922	15	189	365	3	14	33	24	153	428	7	59	403	0	4	9	181	1720	6775
1997	67	712	3724	44	408	1749	13	144	353	1	15	31	20	147	427	4	79	427	0	4	5	149	1509	6716
<b>1998</b>	<b>72</b>	<b>779</b>	<b>4213</b>	<b>44</b>	<b>383</b>	<b>1972</b>	<b>13</b>	<b>157</b>	<b>314</b>	<b>0</b>	<b>20</b>	<b>26</b>	<b>35</b>	<b>142</b>	<b>402</b>	<b>4</b>	<b>79</b>	<b>408</b>	<b>0</b>	<b>6</b>	<b>10</b>	<b>168</b>	<b>1566</b>	<b>7345</b>
1999	71	749	4749	38	456	2173	15	123	277	0	14	20	26	178	419	3	84	425	0	3	8	153	1607	8071
2000	91	739	5132	37	490	2191	16	158	323	0	12	25	21	151	409	1	75	412	0	2	9	166	1627	8501
2001	76	809	5023	32	419	2298	13	156	300	1	13	21	26	143	426	6	58	417	0	5	12	154	1603	8497
2002	72	753	5012	39	434	2196	20	153	321	1	7	22	19	129	425	3	59	402	0	3	4	154	1538	8382
<b>2003</b>	<b>77</b>	<b>783</b>	<b>4663</b>	<b>44</b>	<b>343</b>	<b>1896</b>	<b>12</b>	<b>144</b>	<b>280</b>	<b>1</b>	<b>19</b>	<b>27</b>	<b>17</b>	<b>115</b>	<b>359</b>	<b>5</b>	<b>63</b>	<b>367</b>	<b>0</b>	<b>3</b>	<b>5</b>	<b>156</b>	<b>1470</b>	<b>7597</b>
2004	80	686	4322	23	317	1915	19	157	288	1	9	20	12	103	367	3	57	376	1	1	6	139	1330	7294
2005	74	646	3943	39	342	1598	18	125	277	2	11	19	11	111	373	3	61	415	0	0	1	147	1296	6626
2006	58	670	3772	20	302	1586	22	178	322	1	17	22	12	111	366	4	79	403	0	0	2	117	1357	6473
2007	58	687	4013	37	347	1761	8	162	408	0	10	17	17	108	328	5	47	413	0	0	4	125	1361	6944
<b>2008</b>	<b>45</b>	<b>584</b>	<b>4215</b>	<b>24</b>	<b>264</b>	<b>1721</b>	<b>16</b>	<b>176</b>	<b>435</b>	<b>1</b>	<b>8</b>	<b>23</b>	<b>12</b>	<b>120</b>	<b>335</b>	<b>1</b>	<b>66</b>	<b>440</b>	<b>0</b>	<b>0</b>	<b>4</b>	<b>99</b>	<b>1218</b>	<b>7173</b>
<b>2009</b>	<b>60</b>	<b>550</b>	<b>4009</b>	<b>32</b>	<b>243</b>	<b>1481</b>	<b>14</b>	<b>159</b>	<b>389</b>	<b>1</b>	<b>9</b>	<b>15</b>	<b>10</b>	<b>89</b>	<b>280</b>	<b>2</b>	<b>59</b>	<b>443</b>	<b>0</b>	<b>0</b>	<b>4</b>	<b>119</b>	<b>1109</b>	<b>6621</b>
<b>2010</b>	<b>57</b>	<b>500</b>	<b>4207</b>	<b>23</b>	<b>211</b>	<b>1574</b>	<b>16</b>	<b>146</b>	<b>388</b>	<b>0</b>	<b>7</b>	<b>20</b>	<b>17</b>	<b>103</b>	<b>245</b>	<b>5</b>	<b>82</b>	<b>467</b>	<b>0</b>	<b>1</b>	<b>4</b>	<b>118</b>	<b>1050</b>	<b>6905</b>
<b>2011</b>	<b>40</b>	<b>444</b>	<b>4239</b>	<b>22</b>	<b>193</b>	<b>1507</b>	<b>20</b>	<b>143</b>	<b>361</b>	<b>1</b>	<b>9</b>	<b>19</b>	<b>17</b>	<b>77</b>	<b>269</b>	<b>3</b>	<b>61</b>	<b>498</b>	<b>0</b>	<b>4</b>	<b>7</b>	<b>103</b>	<b>931</b>	<b>6900</b>
<b>2012</b>	<b>52</b>	<b>350</b>	<b>4029</b>	<b>14</b>	<b>137</b>	<b>1431</b>	<b>13</b>	<b>113</b>	<b>339</b>	<b>2</b>	<b>6</b>	<b>14</b>	<b>10</b>	<b>77</b>	<b>287</b>	<b>3</b>	<b>78</b>	<b>508</b>	<b>0</b>	<b>0</b>	<b>10</b>	<b>94</b>	<b>761</b>	<b>6618</b>

MI – Minor Injury; SI – Serious Injury; F - Fatality

## Table 5: Casualties by Age and Severity, 1993 - 2012

Year	0-15			16-19			20-24			25-29			30-39			40-49			50-59			60-69			70+			Unknown			ALL CASUALTIES		
	F	SI	MI	F	SI	MI	F	SI	MI	F	SI	MI	F	SI	MI	F	SI	MI	F	SI	MI	F	SI	MI	F	SI	MI	F	SI	MI	F	SI	MI
1993	9	143	579	32	222	875	42	271	1101	23	176	788	38	227	1100	24	142	709	10	94	437	14	80	272	22	89	286	4	105	366	218	1549	6513
1994	11	130	554	15	219	857	27	263	1088	20	169	680	31	225	1130	10	139	782	9	92	434	12	82	274	27	96	292	1	99	401	163	1514	6492
1995	14	132	597	22	225	884	24	255	1094	16	168	716	39	226	1056	18	154	807	10	94	450	19	69	308	20	99	330	0	99	396	182	1521	6638
1996	12	162	642	18	230	931	27	279	1002	21	203	708	26	267	1155	23	160	824	12	98	475	15	101	286	26	118	362	1	102	390	181	1720	6775
1997	8	149	603	19	194	840	21	233	973	13	149	718	28	255	1127	11	150	866	11	91	524	12	79	307	24	110	350	2	99	408	149	1509	6716
1998	10	134	623	18	251	979	17	212	1099	12	172	820	25	225	1207	21	181	889	12	103	555	14	66	315	37	120	346	2	102	512	168	1566	7345
1999	14	147	662	21	218	987	23	222	1056	11	136	904	22	225	1337	18	172	996	11	110	620	13	81	347	20	118	343	0	178	819	153	1607	8071
2000	11	121	547	26	212	1115	16	229	1180	23	158	893	21	225	1427	21	196	1042	10	113	698	14	81	396	24	111	376	0	181	827	166	1627	8501
2001	10	101	519	16	223	1092	14	210	1168	16	159	887	32	260	1405	14	192	1120	11	128	724	13	72	346	28	80	388	0	178	848	154	1603	8497
2002	16	107	461	16	198	1142	18	213	1159	17	164	875	28	241	1385	24	177	1088	10	104	680	5	54	349	20	108	416	0	172	827	154	1538	8382
2003	11	81	434	21	189	993	20	225	1060	11	147	750	26	244	1282	19	182	1081	18	119	701	10	62	329	20	100	331	0	121	636	156	1470	7597
2004	7	64	423	7	198	907	27	212	1044	17	134	652	26	207	1203	18	169	960	17	98	626	11	56	351	9	85	368	0	107	760	139	1330	7294
2005	8	86	348	18	173	875	28	195	921	19	115	616	16	205	1097	19	157	953	11	121	627	11	77	341	17	94	315	0	73	533	147	1296	6626
2006	3	74	440	12	181	707	17	186	930	11	129	610	17	225	1026	23	180	897	14	122	677	10	70	352	10	88	344	0	102	490	117	1357	6473
2007	6	60	398	18	171	804	16	210	968	14	137	702	14	213	1096	13	166	980	10	138	688	5	73	350	29	99	389	0	94	569	125	1361	6944
2008	5	51	438	16	157	811	12	178	922	10	114	697	19	212	1154	9	164	1065	13	111	797	4	74	434	11	91	365	0	66	490	99	1218	7173
2009	4	60	394	20	138	766	22	138	827	10	124	681	17	179	1120	20	132	1041	12	112	728	2	81	417	12	95	321	0	50	326	119	1109	6621
2010	5	49	397	19	110	737	12	131	846	5	121	739	16	145	1159	22	155	1008	17	112	881	8	72	406	14	120	381	0	35	351	118	1050	6905
2011	4	43	389	6	94	695	5	127	938	9	95	688	22	146	1178	22	140	1055	12	106	833	4	77	461	19	73	390	0	30	273	103	931	6900
2012	3	32	393	7	76	616	10	104	836	7	75	694	9	106	1137	16	112	996	11	91	784	9	70	464	22	73	423	0	22	275	94	761	6618

MI – Minor Injury; SI – Serious Injury; F - Fatality

**Table 6: Casualties by Sex and Severity, 1993 - 2012**

Year	Male			Female			Unknown			ALL PERSONS		
	F	SI	MI	F	SI	MI	F	SI	MI	F	SI	MI
<b>1993</b>	<b>148</b>	<b>948</b>	<b>3256</b>	<b>70</b>	<b>597</b>	<b>3222</b>	<b>0</b>	<b>4</b>	<b>35</b>	<b>218</b>	<b>1549</b>	<b>6513</b>
1994	115	968	3231	48	540	3230	0	6	31	163	1514	6492
1995	130	967	3233	52	553	3355	0	1	50	182	1521	6638
1996	132	1046	3170	48	669	3571	1	5	34	181	1720	6775
1997	98	947	3173	51	554	3488	0	8	55	149	1509	6716
<b>1998</b>	<b>111</b>	<b>941</b>	<b>3277</b>	<b>55</b>	<b>605</b>	<b>3897</b>	<b>2</b>	<b>20</b>	<b>171</b>	<b>168</b>	<b>1566</b>	<b>7345</b>
1999	96	965	3715	56	613	4192	1	29	164	153	1607	8071
2000	121	981	3914	45	626	4479	0	20	108	166	1627	8501
2001	113	974	3929	41	621	4504	0	8	64	154	1603	8497
2002	117	961	3951	37	574	4426	0	3	5	154	1538	8382
<b>2003</b>	<b>109</b>	<b>914</b>	<b>3596</b>	<b>47</b>	<b>552</b>	<b>3995</b>	<b>0</b>	<b>4</b>	<b>6</b>	<b>156</b>	<b>1470</b>	<b>7597</b>
2004	111	823	3461	28	506	3811	0	1	22	139	1330	7294
2005	108	831	3282	39	464	3319	0	1	25	147	1296	6626
2006	89	872	3072	28	485	3395	0	0	6	117	1357	6473
2007	94	864	3299	31	497	3620	0	0	25	125	1361	6944
<b>2008</b>	<b>74</b>	<b>757</b>	<b>3366</b>	<b>25</b>	<b>461</b>	<b>3796</b>	<b>0</b>	<b>0</b>	<b>11</b>	<b>99</b>	<b>1218</b>	<b>7173</b>
<b>2009</b>	<b>93</b>	<b>703</b>	<b>3188</b>	<b>26</b>	<b>404</b>	<b>3416</b>	<b>0</b>	<b>2</b>	<b>17</b>	<b>119</b>	<b>1109</b>	<b>6621</b>
<b>2010</b>	<b>78</b>	<b>663</b>	<b>3258</b>	<b>40</b>	<b>386</b>	<b>3634</b>	<b>0</b>	<b>1</b>	<b>13</b>	<b>118</b>	<b>1050</b>	<b>6905</b>
<b>2011</b>	<b>76</b>	<b>583</b>	<b>3281</b>	<b>27</b>	<b>348</b>	<b>3611</b>	<b>0</b>	<b>0</b>	<b>8</b>	<b>103</b>	<b>931</b>	<b>6900</b>
<b>2012</b>	<b>72</b>	<b>499</b>	<b>3144</b>	<b>22</b>	<b>262</b>	<b>3464</b>	<b>0</b>	<b>0</b>	<b>10</b>	<b>94</b>	<b>761</b>	<b>6618</b>

MI – Minor Injury; SI – Serious Injury; F - Fatality



**Table 7: Crashes and Casualties by Region and Severity, 1993 - 2012**

Year	Metropolitan Adelaide									Rural South Australia								
	Crashes					Casualties				Crashes					Casualties			
	Fatal Crashes	Serious Injury Crashes	Minor Injury Crashes	Property Damage Crashes	ALL CRASHES	Fatalities	Serious Injuries	Minor Injuries	ALL CASUALTIES	Fatal Crashes	Serious Injury Crashes	Minor Injury Crashes	Property Damage Crashes	ALL CRASHES	Fatalities	Serious Injuries	Minor Injuries	ALL CASUALTIES
1993	90	648	4106		4844	99	766	5043	5908	101	541	974		1616	119	783	1470	2372
1994	65	657	4105	27433	32260	75	777	5028	5880	80	528	975	4984	6567	88	738	1463	2289
1995	77	677	4120	27726	32600	77	817	5152	6046	87	509	978	5122	6696	105	704	1486	2295
1996	68	700	4031	27232	32031	73	861	5206	6140	94	625	991	5194	6904	108	860	1568	2536
1997	52	665	4199	27194	32110	55	800	5294	6149	72	504	928	5231	6735	94	711	1410	2215
1998	65	698	4579	27285	32627	70	855	5868	6793	87	527	970	5360	6944	98	710	1474	2282
1999	56	674	5091	28790	34611	61	830	6618	7509	76	564	956	5499	7095	92	777	1454	2323
2000	63	681	5423	28055	34222	68	842	6983	7893	88	548	1009	5117	6762	98	785	1516	2399
2001	64	647	5369	27988	34068	67	768	6950	7785	73	598	983	5051	6705	87	835	1548	2470
2002	49	621	5218	27582	33470	54	754	6743	7551	89	578	1031	4942	6640	100	784	1639	2523
2003	57	585	4839	19316	24797	62	731	6188	6981	78	584	947	3902	5511	94	739	1409	2242
2004	61	577	4587	12586	17811	64	692	5907	6663	67	494	938	2810	4309	75	639	1394	2108
2005	47	514	4213	12093	16867	51	621	5301	5973	79	481	895	2708	4163	96	676	1330	2102
2006	50	619	4145	11775	16589	54	730	5159	5943	54	473	863	2583	3973	63	628	1330	2021
2007	45	615	4381	12373	17414	49	723	5568	6340	63	476	915	2714	4168	76	646	1396	2118
2008	40	557	4647	12388	17632	44	650	5770	6464	47	440	972	2699	4158	55	569	1408	2032
2009	36	495	4288	12253	17072	41	566	5315	5922	68	414	927	2844	4253	78	543	1305	1926
2010	44	478	4503	12617	17642	45	531	5632	6208	61	408	918	2880	4267	73	519	1273	1865
2011	41	419	4575	13726	18761	42	472	5607	6121	54	361	899	2857	4171	61	459	1293	1813
2012	29	347	4457	13619	18452	31	384	5373	5788	57	290	912	2793	4052	63	377	1245	1685

# ROAD CRASHES in 2012

---

Time Distribution

Crash Types

Crash Location

Top Intersections

Motor Vehicle Types

Involvement & Responsibility

**Table 8: Crashes and Casualties during Holiday Periods by Severity**

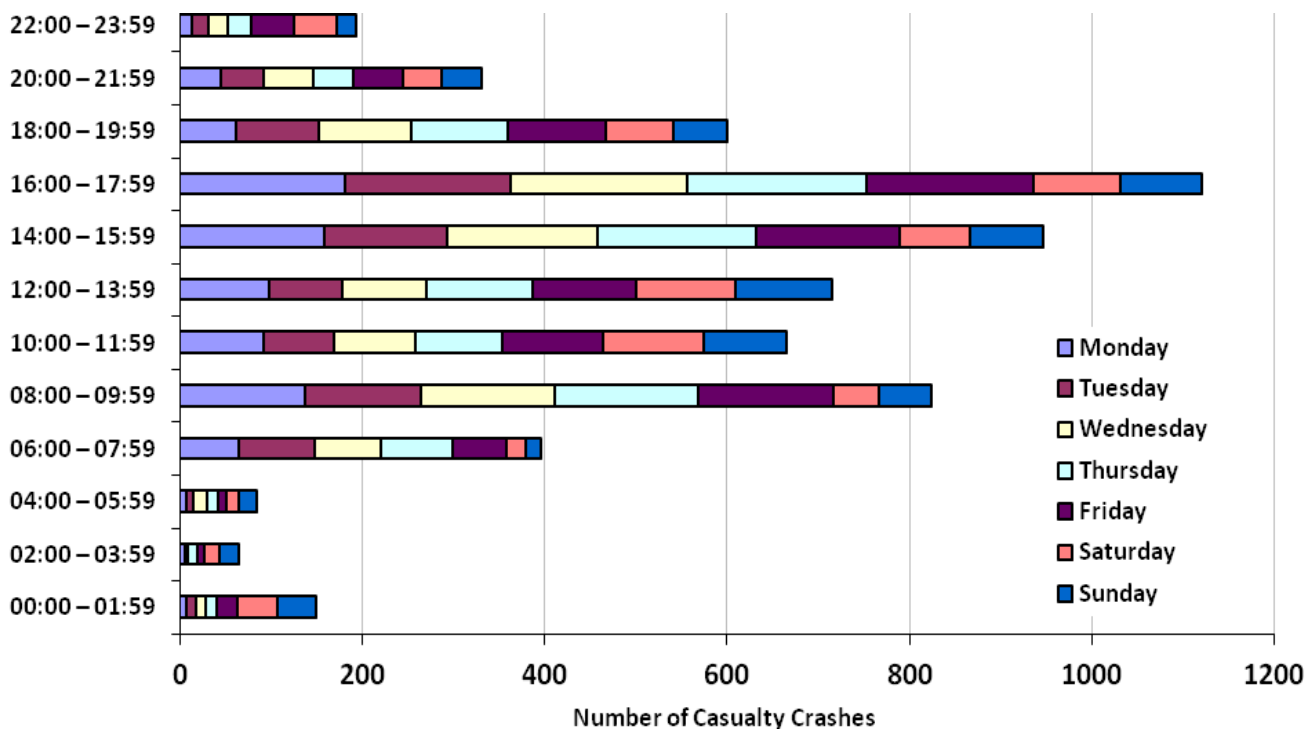
Period	Crashes					Casualties			
	Fatal Crashes	Serious Injury Crashes	Minor Injury Crashes	Property Damage Crashes	ALL CRASHES	Fatalities	Serious Injuries	Minor Injuries	ALL CASUALTIES
New Year (1 January) (1 day)	0	2	9	31	42	0	2	9	11
Australia Day (26 January) (1 day)	0	1	11	32	44	0	2	19	21
Adelaide Cup (10 March – 12 March) (3 days)	0	2	33	92	127	0	2	40	42
Easter (5 April – 9 April) (5 days)	1	12	62	178	253	1	13	84	98
Anzac Day (25 April) (1 day)	0	3	6	31	40	0	3	8	11
Queens Birthday (9 June – 11 June) (3 days)	1	4	29	101	135	1	4	33	38
Labour Day (29 September – 1 October) (3 days)	1	6	27	74	108	1	10	32	43
Christmas/New Year Period (23 December – 3 January <sup>1</sup> ) (6days)	7	15	132	347	501	7	17	176	200
<b>SCHOOL HOLIDAYS</b>									
January (1 January – 29 January) (29 days)	6	36	371	1143	1556	6	49	469	524
April (7 April – 22 April) (16 days)	4	26	221	647	898	4	31	270	305
July (30 June – 15 July) (16 days)	3	25	185	638	851	3	31	252	286
September (22 September – 7 October) (16 days)	3	28	195	598	824	3	33	233	269
December (15 December – 31 December) (15 days)	8	23	202	626	859	8	29	261	298

<sup>1</sup> 2013 data is preliminary and correct at the time of publishing

**Table 9a: Casualty Crashes by Time of Day, Day of Week**

Time Period	Day of Week							TOTAL
	Monday	Tuesday	Wednesday	Thursday	Friday	Saturday	Sunday	
00:00 – 01:59	8	10	11	12	22	44	43	150
02:00 – 03:59	6	0	3	10	8	17	21	65
04:00 – 05:59	7	8	15	12	9	14	20	85
06:00 – 07:59	65	83	73	78	60	21	16	396
08:00 – 09:59	138	127	146	157	149	49	58	824
10:00 – 11:59	92	78	88	96	110	111	91	666
12:00 – 13:59	99	79	93	116	113	110	105	715
14:00 – 15:59	159	135	164	174	158	77	79	946
16:00 – 17:59	181	182	194	196	183	95	90	1121
18:00 – 19:59	62	90	102	106	107	74	59	600
20:00 – 21:59	45	47	55	43	55	43	43	331
22:00 – 23:59	13	18	22	25	47	48	20	193
<b>TOTAL</b>	<b>875</b>	<b>857</b>	<b>966</b>	<b>1025</b>	<b>1021</b>	<b>703</b>	<b>645</b>	<b>6092</b>

**Figure 3: Casualty Crashes by Time of Day, Day of Week**



**Table 9b: Casualties by Time of Day, Day of Week**

Time Period	Day of Week							TOTAL
	Monday	Tuesday	Wednesday	Thursday	Friday	Saturday	Sunday	
00:00 – 01:59	9	16	11	12	27	52	60	<b>187</b>
02:00 – 03:59	6	0	3	10	10	23	24	<b>76</b>
04:00 – 05:59	7	9	15	12	10	23	27	<b>103</b>
06:00 – 07:59	74	92	91	85	63	25	23	<b>453</b>
08:00 – 09:59	166	149	178	188	173	67	72	<b>993</b>
10:00 – 11:59	109	99	108	113	125	136	110	<b>800</b>
12:00 – 13:59	115	99	118	152	134	146	141	<b>905</b>
14:00 – 15:59	197	174	208	214	182	97	98	<b>1170</b>
16:00 – 17:59	210	215	239	246	213	123	132	<b>1378</b>
18:00 – 19:59	73	100	127	129	124	106	79	<b>738</b>
20:00 – 21:59	53	57	66	53	70	57	64	<b>420</b>
22:00 – 23:59	17	19	23	37	62	63	29	<b>250</b>
<b>TOTAL</b>	<b>1036</b>	<b>1029</b>	<b>1187</b>	<b>1251</b>	<b>1193</b>	<b>918</b>	<b>859</b>	<b>7473</b>

**Table 9c: All Crashes by Time of Day, Day of Week**

Time Period	Day of Week							TOTAL
	Monday	Tuesday	Wednesday	Thursday	Friday	Saturday	Sunday	
00:00 – 01:59	39	42	50	44	59	120	145	<b>499</b>
02:00 – 03:59	26	13	26	34	38	70	94	<b>301</b>
04:00 – 05:59	35	27	37	47	40	45	66	<b>297</b>
06:00 – 07:59	221	250	247	251	212	86	87	<b>1354</b>
08:00 – 09:59	484	506	512	568	560	214	158	<b>3002</b>
10:00 – 11:59	296	344	350	349	419	438	279	<b>2475</b>
12:00 – 13:59	354	330	376	436	449	431	364	<b>2740</b>
14:00 – 15:59	565	505	594	628	616	375	336	<b>3619</b>
16:00 – 17:59	631	644	740	731	752	393	315	<b>4206</b>
18:00 – 19:59	247	296	336	370	403	255	195	<b>2102</b>
20:00 – 21:59	136	142	166	193	207	172	152	<b>1168</b>
22:00 – 23:59	56	78	98	86	161	186	76	<b>741</b>
<b>TOTAL</b>	<b>3090</b>	<b>3177</b>	<b>3532</b>	<b>3737</b>	<b>3916</b>	<b>2785</b>	<b>2267</b>	<b>22504</b>

**Table 10: Crashes and Casualties by Month of Year and Severity**

Month	Crashes				ALL CRASHES	Casualties			
	Fatal Crashes	Serious Injury Crashes	Minor Injury Crashes	Property Damage Crashes		Fatalities	Serious Injuries	Minor Injuries	ALL CASUALTIES
January	6	39	392	1226	<b>1663</b>	6	52	494	<b>552</b>
February	9	56	439	1394	<b>1898</b>	9	66	535	<b>610</b>
March	9	50	522	1399	<b>1980</b>	10	64	623	<b>697</b>
April	9	57	425	1229	<b>1720</b>	11	66	523	<b>600</b>
May	5	65	496	1503	<b>2069</b>	5	76	607	<b>688</b>
June	7	40	430	1503	<b>1980</b>	7	49	517	<b>573</b>
July	5	52	415	1379	<b>1851</b>	5	62	535	<b>602</b>
August	6	55	476	1414	<b>1951</b>	9	66	593	<b>668</b>
September	8	43	416	1347	<b>1814</b>	8	53	500	<b>561</b>
October	4	63	503	1368	<b>1938</b>	5	71	612	<b>688</b>
November	7	64	439	1403	<b>1913</b>	8	74	544	<b>626</b>
December	11	53	416	1247	<b>1727</b>	11	62	535	<b>608</b>
<b>TOTAL</b>	<b>86</b>	<b>637</b>	<b>5369</b>	<b>16412</b>	<b>22504</b>	<b>94</b>	<b>761</b>	<b>6618</b>	<b>7473</b>

**Table 11a: Crashes and Casualties by Crash Type and Severity  
Metropolitan Adelaide**

Crash Type	Crashes				Casualties				
	Fatal Crashes	Serious Injury Crashes	Minor Injury Crashes	Property Damage Crashes	ALL CRASHES	Fatalities	Serious Injuries	Minor Injuries	ALL CASUALTIES
<b>MULTI VEHICLE</b>									
Head On	1	16	54	96	<b>167</b>	1	22	76	<b>99</b>
Rear End	3	31	1828	5177	<b>7039</b>	3	35	2249	<b>2287</b>
Side Swipe	1	19	340	1924	<b>2284</b>	1	21	380	<b>402</b>
Right Angle	4	58	860	2423	<b>3345</b>	4	70	1052	<b>1126</b>
Right Turn	2	38	466	994	<b>1500</b>	2	41	599	<b>642</b>
Hit Parked Vehicle	0	16	118	1361	<b>1495</b>	0	18	128	<b>146</b>
<b>Sub-total</b>	<b>11</b>	<b>178</b>	<b>3666</b>	<b>11975</b>	<b>15830</b>	<b>11</b>	<b>207</b>	<b>4484</b>	<b>4702</b>
<b>SINGLE VEHICLE</b>									
Hit Fixed Object	11	71	387	1376	<b>1845</b>	13	76	456	<b>545</b>
Hit Pedestrian	5	66	235	6	<b>312</b>	5	66	247	<b>318</b>
Hit Animal	0	0	3	56	<b>59</b>	0	0	4	<b>4</b>
Hit Object on Road	0	3	10	41	<b>54</b>	0	3	10	<b>13</b>
Roll Over	1	25	136	81	<b>243</b>	1	26	150	<b>177</b>
Left Road Out of Control	0	1	7	23	<b>31</b>	0	1	8	<b>9</b>
Other	1	3	13	61	<b>78</b>	1	5	14	<b>20</b>
<b>Sub-total</b>	<b>18</b>	<b>169</b>	<b>791</b>	<b>1644</b>	<b>2622</b>	<b>20</b>	<b>177</b>	<b>889</b>	<b>1086</b>
<b>TOTAL</b>	<b>29</b>	<b>347</b>	<b>4457</b>	<b>13619</b>	<b>18452</b>	<b>31</b>	<b>384</b>	<b>5373</b>	<b>5788</b>

**Table 11b: Crashes and Casualties by Crash Type and Severity  
Rural**

Crash Type	Crashes				Casualties				
	Fatal Crashes	Serious Injury Crashes	Minor Injury Crashes	Property Damage Crashes	ALL CRASHES	Fatalities	Serious Injuries	Minor Injuries	ALL CASUALTIES
<b>MULTI VEHICLE</b>									
Head On	13	19	31	58	<b>121</b>	16	39	58	<b>113</b>
Rear End	4	10	78	340	<b>432</b>	4	12	107	<b>123</b>
Side Swipe	1	16	38	240	<b>295</b>	1	20	58	<b>79</b>
Right Angle	6	30	160	487	<b>683</b>	8	48	234	<b>290</b>
Right Turn	0	5	31	100	<b>136</b>	0	6	48	<b>54</b>
Hit Parked Vehicle	0	5	20	219	<b>244</b>	0	5	21	<b>26</b>
<b>Sub-total</b>	<b>24</b>	<b>85</b>	<b>358</b>	<b>1444</b>	<b>1911</b>	<b>29</b>	<b>130</b>	<b>526</b>	<b>685</b>
<b>SINGLE VEHICLE</b>									
Hit Fixed Object	19	111	262	648	<b>1040</b>	20	135	330	<b>485</b>
Hit Pedestrian	3	7	29	0	<b>39</b>	3	7	35	<b>45</b>
Hit Animal	1	6	19	349	<b>375</b>	1	6	21	<b>28</b>
Hit Object on Road	0	2	6	30	<b>38</b>	0	3	7	<b>10</b>
Roll Over	8	71	211	240	<b>530</b>	8	84	294	<b>386</b>
Left Road Out of Control	1	6	24	50	<b>81</b>	1	10	29	<b>40</b>
Other	1	2	3	32	<b>38</b>	1	2	3	<b>6</b>
<b>Sub-total</b>	<b>33</b>	<b>205</b>	<b>554</b>	<b>1349</b>	<b>2141</b>	<b>34</b>	<b>247</b>	<b>719</b>	<b>1000</b>
<b>TOTAL</b>	<b>57</b>	<b>290</b>	<b>912</b>	<b>2793</b>	<b>4052</b>	<b>63</b>	<b>377</b>	<b>1245</b>	<b>1685</b>

**Table 11c: Crashes and Casualties by Crash Type and Severity  
South Australia**

Crash Type	Crashes				Casualties				
	Fatal Crashes	Serious Injury Crashes	Minor Injury Crashes	Property Damage Crashes	ALL CRASHES	Fatalities	Serious Injuries	Minor Injuries	ALL CASUALTIES
<b>MULTI VEHICLE</b>									
Head On	14	35	85	154	<b>288</b>	17	61	134	<b>212</b>
Rear End	7	41	1906	5517	<b>7471</b>	7	47	2356	<b>2410</b>
Side Swipe	2	35	378	2164	<b>2579</b>	2	41	438	<b>481</b>
Right Angle	10	88	1020	2910	<b>4028</b>	12	118	1286	<b>1416</b>
Right Turn	2	43	497	1094	<b>1636</b>	2	47	647	<b>696</b>
Hit Parked Vehicle	0	21	138	1580	<b>1739</b>	0	23	149	<b>172</b>
<b>Sub-total</b>	<b>35</b>	<b>263</b>	<b>4024</b>	<b>13419</b>	<b>17741</b>	<b>40</b>	<b>337</b>	<b>5010</b>	<b>5387</b>
<b>SINGLE VEHICLE</b>									
Hit Fixed Object	30	182	649	2024	<b>2885</b>	33	211	786	<b>1030</b>
Hit Pedestrian	8	73	264	6	<b>351</b>	8	73	282	<b>363</b>
Hit Animal	1	6	22	405	<b>434</b>	1	6	25	<b>32</b>
Hit Object on Road	0	5	16	71	<b>92</b>	0	6	17	<b>23</b>
Roll Over	9	96	347	321	<b>773</b>	9	110	444	<b>563</b>
Left Road Out of Control	1	7	31	73	<b>112</b>	1	11	37	<b>49</b>
Other	2	5	16	93	<b>116</b>	2	7	17	<b>26</b>
<b>Sub-total</b>	<b>51</b>	<b>374</b>	<b>1345</b>	<b>2993</b>	<b>4763</b>	<b>54</b>	<b>424</b>	<b>1608</b>	<b>2086</b>
<b>TOTAL</b>	<b>86</b>	<b>637</b>	<b>5369</b>	<b>16412</b>	<b>22504</b>	<b>94</b>	<b>761</b>	<b>6618</b>	<b>7473</b>

**Table 12: Hit Object Crashes by Object First Hit and Severity**

Type of Fixed Object	Fatal Crashes	Serious Injury Crashes	Minor Injury Crashes	Property Damage Crashes	ALL CRASHES
Tree		18	91	242	515
Traffic Signal Pole		1	0	10	57
Pole - not Stobie		0	2	35	155
Bridge		0	1	4	7
Sign Post		1	5	26	53
Stobie Pole		1	19	77	212
Other Fixed Obstruction		6	50	229	905
Guard Rail		3	14	26	120
<b>TOTAL</b>		<b>30</b>	<b>182</b>	<b>649</b>	<b>2024</b>

**Table 13: Single Vehicle Crashes by Motor Vehicle Type & Severity**

Type of Vehicle	Fatal Crashes	Serious Injury Crashes	Minor Injury Crashes <sup>1</sup>	Property Damage Crashes	ALL CRASHES
Passenger Vehicle	42	275	1051	2742	4110
Light Truck (>4.5 Tonnes)	0	0	3	10	13
Heavy Vehicle	1	10	30	154	195
Buses	1	4	3	6	14
Motorcycles	6	59	159	55	279
Bicycles	1	25	89	9	124
Other	0	1	8	17	26
<b>TOTAL</b>	<b>51</b>	<b>374</b>	<b>1343</b>	<b>2993</b>	<b>4761</b>

<sup>1</sup> 2012 total excludes two crashes that included gopher riders



**Table 14a: Crashes and Casualties by Location Type and Severity  
Metropolitan Adelaide**

Location Type	Crashes					Casualties			
	Fatal Crashes	Serious Injury Crashes	Minor Injury Crashes	Property Damage Crashes	ALL CRASHES	Fatalities	Serious Injuries	Minor Injuries	ALL CASUALTIES
<b>INTERSECTION</b>									
Interchange	0	1	15	37	53	0	1	18	19
Cross Road	3	67	1185	3501	4756	3	74	1436	1513
Y-Junction	0	0	7	9	16	0	0	9	9
T-Junction	5	96	1325	3545	4971	5	107	1622	1734
Multiple	0	2	72	241	315	0	3	84	87
Rail Xing	0	0	6	25	31	0	0	6	6
<b>Sub-total</b>	<b>8</b>	<b>166</b>	<b>2610</b>	<b>7358</b>	<b>10142</b>	<b>8</b>	<b>185</b>	<b>3175</b>	<b>3368</b>
<b>MID BLOCK</b>									
Crossover	0	0	0	1	1	0	0	0	0
Rail Crossing	0	0	18	32	50	0	0	26	26
Divided Road	11	64	841	2536	3452	12	70	1027	1109
Not Divided	8	106	901	3448	4463	8	115	1044	1167
One Way	0	1	4	18	23	0	1	4	5
Freeway	0	5	33	119	157	0	8	44	52
Ramp On	0	0	4	8	12	0	0	4	4
Ramp Off	0	0	3	8	11	0	0	3	3
Ped. Crossing	2	3	38	89	132	3	3	41	47
Other	0	2	5	2	9	0	2	5	7
<b>Sub-total</b>	<b>21</b>	<b>181</b>	<b>1847</b>	<b>6261</b>	<b>8310</b>	<b>23</b>	<b>199</b>	<b>2198</b>	<b>2420</b>
<b>TOTAL</b>	<b>29</b>	<b>347</b>	<b>4457</b>	<b>13619</b>	<b>18452</b>	<b>31</b>	<b>384</b>	<b>5373</b>	<b>5788</b>

**Table 14b: Crashes and Casualties by Location Type and Severity  
Rural**

Location Type	Crashes					Casualties			
	Fatal Crashes	Serious Injury Crashes	Minor Injury Crashes	Property Damage Crashes	ALL CRASHES	Fatalities	Serious Injuries	Minor Injuries	ALL CASUALTIES
<b>INTERSECTION</b>									
Interchange	0	0	2	6	8	0	0	2	2
Cross Road	1	23	134	392	550	2	31	195	228
Y- Junction	0	0	0	1	1	0	0	0	0
T-Junction	4	24	167	445	640	4	27	220	251
Multiple	1	1	6	13	21	2	1	9	12
<b>Sub-total</b>	<b>6</b>	<b>48</b>	<b>309</b>	<b>857</b>	<b>1220</b>	<b>8</b>	<b>59</b>	<b>426</b>	<b>493</b>
<b>MID BLOCK</b>									
Crossover	0	0	0	1	1	0	0	0	0
Rail Crossing	2	0	4	3	9	2	1	5	8
Divided Road	3	13	32	119	167	3	16	47	66
Not Divided	44	229	557	1777	2607	48	301	755	1104
Freeway	1	0	7	32	40	1	0	9	10
Ramp On	0	0	1	0	1	0	0	1	1
Ped. Crossing	0	0	1	3	4	0	0	1	1
Other	1	0	1	1	3	1	0	1	2
<b>Sub-total</b>	<b>51</b>	<b>242</b>	<b>603</b>	<b>1936</b>	<b>2832</b>	<b>55</b>	<b>318</b>	<b>819</b>	<b>1192</b>
<b>TOTAL</b>	<b>57</b>	<b>290</b>	<b>912</b>	<b>2793</b>	<b>4052</b>	<b>63</b>	<b>377</b>	<b>1245</b>	<b>1685</b>

**Table 14c: Crashes and Casualties by Location Type and Severity  
South Australia**

Location Type	Crashes					Casualties			
	Fatal Crashes	Serious Injury Crashes	Minor Injury Crashes	Property Damage Crashes	ALL CRASHES	Fatalities	Serious Injuries	Minor Injuries	ALL CASUALTIES
<b>INTERSECTION</b>									
Interchange	0	1	17	43	61	0	1	20	21
Cross Road	4	90	1319	3893	5306	5	105	1631	1741
Y- Junction	0	0	7	10	17	0	0	9	9
T-Junction	9	120	1492	3990	5611	9	134	1842	1985
Multiple	1	3	78	254	336	2	4	93	99
Rail Crossing	0	0	6	25	31	0	0	6	6
<b>Sub-total</b>	<b>14</b>	<b>214</b>	<b>2919</b>	<b>8215</b>	<b>11362</b>	<b>16</b>	<b>244</b>	<b>3601</b>	<b>3861</b>
<b>MID BLOCK</b>									
Crossover	0	0	0	2	2	0	0	0	0
Rail Crossing	2	0	22	35	59	2	1	31	34
Divided Road	14	77	873	2655	3619	15	86	1074	1175
Not Divided	52	335	1458	5225	7070	56	416	1799	2271
One Way	0	1	4	18	23	0	1	4	5
Freeway	1	5	40	151	197	1	8	53	62
Ramp On	0	0	5	8	13	0	0	5	5
Ramp Off	0	0	3	8	11	0	0	3	3
Ped. Crossing	2	3	39	92	136	3	3	42	48
Other	1	2	6	3	12	1	2	6	9
<b>Sub-total</b>	<b>72</b>	<b>423</b>	<b>2450</b>	<b>8197</b>	<b>11142</b>	<b>78</b>	<b>517</b>	<b>3017</b>	<b>3612</b>
<b>TOTAL</b>	<b>86</b>	<b>637</b>	<b>5369</b>	<b>16412</b>	<b>22504</b>	<b>94</b>	<b>761</b>	<b>6618</b>	<b>7473</b>

**Table 15a: Crashes and Casualties by Traffic Control and Severity  
Metropolitan Adelaide**

Traffic Control	Crashes					Casualties			
	Fatal Crashes	Serious Injury Crashes	Minor Injury Crashes	Property Damage Crashes	ALL CRASHES	Fatalities	Serious Injuries	Minor Injuries	ALL CASUALTIES
<b>INTERSECTION</b>									
Traffic Signals	2	64	1128	3519	<b>4713</b>	2	71	1395	<b>1468</b>
Give Way Sign	2	20	261	713	<b>996</b>	2	22	317	<b>341</b>
Stop Sign	1	15	230	485	<b>731</b>	1	18	292	<b>311</b>
Roundabout	1	5	171	553	<b>730</b>	1	5	189	<b>195</b>
No Control	2	62	819	2088	<b>2971</b>	2	69	981	<b>1052</b>
Rail Xing-Boom	0	0	1	0	<b>1</b>	0	0	1	<b>1</b>
<b>Sub-total</b>	<b>8</b>	<b>166</b>	<b>2610</b>	<b>7358</b>	<b>10142</b>	<b>8</b>	<b>185</b>	<b>3175</b>	<b>3368</b>
<b>MID BLOCK</b>									
Traffic Signals	2	3	48	117	<b>170</b>	3	3	51	<b>57</b>
Give Way Sign	0	0	1	4	<b>5</b>	0	0	1	<b>1</b>
Stop Sign	0	0	0	1	<b>1</b>	0	0	0	<b>0</b>
Roundabout	0	0	0	1	<b>1</b>	0	0	0	<b>0</b>
No Control	19	178	1780	6105	<b>8082</b>	20	196	2120	<b>2336</b>
Rail Xing-Boom	0	0	11	21	<b>32</b>	0	0	18	<b>18</b>
Rail Xing-Traffic Signals	0	0	7	11	<b>18</b>	0	0	8	<b>8</b>
Other	0	0	0	1	<b>1</b>	0	0	0	<b>0</b>
<b>Sub-total</b>	<b>21</b>	<b>181</b>	<b>1847</b>	<b>6261</b>	<b>8310</b>	<b>23</b>	<b>199</b>	<b>2198</b>	<b>2420</b>
<b>TOTAL</b>	<b>29</b>	<b>347</b>	<b>4457</b>	<b>13619</b>	<b>18452</b>	<b>31</b>	<b>384</b>	<b>5373</b>	<b>5788</b>

**Table 15b: Crashes and Casualties by Traffic Control and Severity  
Rural**

Traffic Control	Crashes					Casualties			
	Fatal Crashes	Serious Injury Crashes	Minor Injury Crashes	Property Damage Crashes	ALL CRASHES	Fatalities	Serious Injuries	Minor Injuries	ALL CASUALTIES
<b>INTERSECTION</b>									
Traffic Signals	0	0	17	71	<b>88</b>	0	0	22	<b>22</b>
Give Way Sign	3	18	114	272	<b>407</b>	5	26	174	<b>205</b>
Stop Sign	0	5	30	78	<b>113</b>	0	6	47	<b>53</b>
Roundabout	0	2	17	87	<b>106</b>	0	2	19	<b>21</b>
No Control	3	23	131	349	<b>506</b>	3	25	164	<b>192</b>
<b>Sub-total</b>	<b>6</b>	<b>48</b>	<b>309</b>	<b>857</b>	<b>1220</b>	<b>8</b>	<b>59</b>	<b>426</b>	<b>493</b>
<b>MID BLOCK</b>									
Traffic Signals	0	0	0	5	<b>5</b>	0	0	0	<b>0</b>
Give Way Sign	1	0	1	1	<b>3</b>	1	0	2	<b>3</b>
Stop Sign	1	0	0	0	<b>1</b>	1	1	0	<b>2</b>
No Control	49	242	599	1928	<b>2818</b>	53	317	814	<b>1184</b>
Rail Xing-Flashing	0	0	3	1	<b>4</b>	0	0	3	<b>3</b>
Rail Xing-No Control	0	0	0	1	<b>1</b>	0	0	0	<b>0</b>
<b>Sub-total</b>	<b>51</b>	<b>242</b>	<b>603</b>	<b>1936</b>	<b>2832</b>	<b>55</b>	<b>318</b>	<b>819</b>	<b>1192</b>
<b>TOTAL</b>	<b>57</b>	<b>290</b>	<b>912</b>	<b>2793</b>	<b>4052</b>	<b>63</b>	<b>377</b>	<b>1245</b>	<b>1685</b>

**Table 15c: Crashes and Casualties by Traffic Control and Severity  
South Australia**

Traffic Control	Crashes					Casualties			
	Fatal Crashes	Serious Injury Crashes	Minor Injury Crashes	Property Damage Crashes	ALL CRASHES	Fatalities	Serious Injuries	Minor Injuries	ALL CASUALTIES
<b>INTERSECTION</b>									
Traffic Signals	2	64	1145	3590	<b>4801</b>	2	71	1417	<b>1490</b>
Give Way Sign	5	38	375	985	<b>1403</b>	7	48	491	<b>546</b>
Stop Sign	1	20	260	563	<b>844</b>	1	24	339	<b>364</b>
Roundabout	1	7	188	640	<b>836</b>	1	7	208	<b>216</b>
No Control	5	85	950	2437	<b>3477</b>	5	94	1145	<b>1244</b>
Rail Xing-Boom	0	0	1	0	<b>1</b>	0	0	1	<b>1</b>
<b>Sub-total</b>	<b>14</b>	<b>214</b>	<b>2919</b>	<b>8215</b>	<b>11362</b>	<b>16</b>	<b>244</b>	<b>3601</b>	<b>3861</b>
<b>MID BLOCK</b>									
Traffic Signals	2	3	48	122	<b>175</b>	3	3	51	<b>57</b>
Give Way Sign	1	0	2	5	<b>8</b>	1	0	3	<b>4</b>
Stop Sign	1	0	0	1	<b>2</b>	1	1	0	<b>2</b>
Roundabout	0	0	0	1	<b>1</b>	0	0	0	<b>0</b>
No Control	68	420	2379	8033	<b>10900</b>	73	513	2934	<b>3520</b>
Rail Xing-Boom	0	0	11	21	<b>32</b>	0	0	18	<b>18</b>
Rail Xing-Flashing	0	0	3	1	<b>4</b>	0	0	3	<b>3</b>
Rail Xing-Traffic Signals	0	0	7	11	<b>18</b>	0	0	8	<b>8</b>
Rail Xing-No Control	0	0	0	1	<b>1</b>	0	0	0	<b>0</b>
Other	0	0	0	1	<b>1</b>	0	0	0	<b>0</b>
<b>Sub-total</b>	<b>72</b>	<b>423</b>	<b>2450</b>	<b>8197</b>	<b>11142</b>	<b>78</b>	<b>517</b>	<b>3017</b>	<b>3612</b>
<b>TOTAL</b>	<b>86</b>	<b>637</b>	<b>5369</b>	<b>16412</b>	<b>22504</b>	<b>94</b>	<b>761</b>	<b>6618</b>	<b>7473</b>

**Table 16: Crashes and Casualties by Area Speed Limit, Region & Severity**

Area Speed Limit	Crashes					Casualties			
	Fatal Crashes	Serious Injury Crashes	Minor Injury Crashes	Property Damage Crashes	ALL CRASHES	Fatalities	Serious Injuries	Minor Injuries	ALL CASUALTIES
<b>METROPOLITAN</b>									
<50km/h	0	2	84	289	375	0	2	93	95
50km/h	1	80	1025	3930	5036	1	84	1163	1248
60km/h	15	188	2671	7675	10549	16	204	3256	3476
70km/h	1	22	212	538	773	1	27	262	290
80km/h	5	38	351	870	1264	5	42	440	487
90km/h	5	4	60	157	226	6	4	78	88
100km/h	2	10	46	130	188	2	16	68	86
110km/h	0	3	8	30	41	0	5	13	18
<b>Sub-total</b>	<b>29</b>	<b>347</b>	<b>4457</b>	<b>13619</b>	<b>18452</b>	<b>31</b>	<b>384</b>	<b>5373</b>	<b>5788</b>
<b>RURAL</b>									
<50km/h	1	4	11	32	48	1	4	18	23
50km/h	8	35	186	873	1102	8	39	226	273
60km/h	2	19	127	447	595	2	22	151	175
70km/h	0	0	1	1	2	0	0	1	1
80km/h	11	33	127	287	458	11	49	185	245
90km/h	0	1	7	13	21	0	1	8	9
100km/h	16	116	270	606	1008	17	153	381	551
110km/h	19	82	183	534	818	24	109	275	408
<b>Sub-total</b>	<b>57</b>	<b>290</b>	<b>912</b>	<b>2793</b>	<b>4052</b>	<b>63</b>	<b>377</b>	<b>1245</b>	<b>1685</b>
<b>TOTAL</b>	<b>86</b>	<b>637</b>	<b>5369</b>	<b>16412</b>	<b>22504</b>	<b>94</b>	<b>761</b>	<b>6618</b>	<b>7473</b>

**Table 17: Crashes and Casualties by Light Condition, Region & Severity**

Light Conditions <sup>1</sup> & Region	Crashes					Casualties			
	Fatal Crashes	Serious Injury Crashes	Minor Injury Crashes	Property Damage Crashes	ALL CRASHES	Fatalities	Serious Injuries	Minor Injuries	ALL CASUALTIES
<b>METROPOLITAN</b>									
Daylight	17	236	3598	10833	14684	18	259	4331	4608
Night	12	111	859	2786	3768	13	125	1042	1180
<b>Sub-total</b>	<b>29</b>	<b>347</b>	<b>4457</b>	<b>13619</b>	<b>18452</b>	<b>31</b>	<b>384</b>	<b>5373</b>	<b>5788</b>
<b>RURAL</b>									
Daylight	36	189	665	1988	2878	40	248	908	1196
Night	21	101	247	805	1174	23	129	337	489
<b>Sub-total</b>	<b>57</b>	<b>290</b>	<b>912</b>	<b>2793</b>	<b>4052</b>	<b>63</b>	<b>377</b>	<b>1245</b>	<b>1685</b>
<b>TOTAL</b>	<b>86</b>	<b>637</b>	<b>5369</b>	<b>16412</b>	<b>22504</b>	<b>94</b>	<b>761</b>	<b>6618</b>	<b>7473</b>

<sup>1</sup> Determined according to the schedule of sunrise and sunset times as published in the South Australian Government Gazette

**Table 18: Crashes and Casualties by Vertical Alignment, Region & Severity**

Vertical Alignment & Region	Crashes					Casualties			
	Fatal Crashes	Serious Injury Crashes	Minor Injury Crashes	Property Damage Crashes	ALL CRASHES	Fatalities	Serious Injuries	Minor Injuries	ALL CASUALTIES
<b>METROPOLITAN</b>									
Level	24	272	3989	12428	16713	26	303	4809	5138
Crest of Hill	1	8	50	121	180	1	9	61	71
Bottom of Hill	0	7	39	85	131	0	7	45	52
Slope	4	59	375	963	1401	4	64	450	518
Unknown	0	1	4	22	27	0	1	8	9
<b>Sub-total</b>	<b>29</b>	<b>347</b>	<b>4457</b>	<b>13619</b>	<b>18452</b>	<b>31</b>	<b>384</b>	<b>5373</b>	<b>5788</b>
<b>RURAL</b>									
Level	45	221	654	2176	3096	49	289	884	1222
Crest of Hill	1	11	53	98	163	1	11	69	81
Bottom of Hill	1	6	24	79	110	1	10	29	40
Slope	9	49	173	413	644	9	64	251	324
Unknown	1	3	8	27	39	3	3	12	18
<b>Sub-total</b>	<b>57</b>	<b>290</b>	<b>912</b>	<b>2793</b>	<b>4052</b>	<b>63</b>	<b>377</b>	<b>1245</b>	<b>1685</b>
<b>TOTAL</b>	<b>86</b>	<b>637</b>	<b>5369</b>	<b>16412</b>	<b>22504</b>	<b>94</b>	<b>761</b>	<b>6618</b>	<b>7473</b>

**Table 19: Crashes and Casualties by Horizontal Alignment, Region & Severity**

	Crashes					Casualties			
	Fatal Crashes	Serious Injury Crashes	Minor Injury Crashes	Property Damage Crashes	ALL CRASHES	Fatalities	Serious Injuries	Minor Injuries	ALL CASUALTIES
<b>METROPOLITAN</b>									
Straight	25	288	4104	12659	17076	27	317	4960	5304
Curved, View Obscured	1	23	77	194	295	1	25	84	110
Curved, View Open	3	35	273	745	1056	3	41	326	370
Unknown	0	1	3	21	25	0	1	3	4
<b>Sub-total</b>	<b>29</b>	<b>347</b>	<b>4457</b>	<b>13619</b>	<b>18452</b>	<b>31</b>	<b>384</b>	<b>5373</b>	<b>5788</b>
<b>RURAL</b>									
Straight	32	180	601	2153	2966	36	228	812	1076
Curved, View Obscured	8	42	126	224	400	8	57	167	232
Curved, View Open	17	65	179	400	661	19	89	257	365
Unknown	0	3	6	16	25	0	3	9	12
<b>Sub-total</b>	<b>57</b>	<b>290</b>	<b>912</b>	<b>2793</b>	<b>4052</b>	<b>63</b>	<b>377</b>	<b>1245</b>	<b>1685</b>
<b>TOTAL</b>	<b>86</b>	<b>637</b>	<b>5369</b>	<b>16412</b>	<b>22504</b>	<b>94</b>	<b>761</b>	<b>6618</b>	<b>7473</b>

**Table 20: Crashes and Casualties by Road Moisture, Region & Severity**

Road Moisture & Region	Crashes					Casualties			
	Fatal Crashes	Serious Injury Crashes	Minor Injury Crashes	Property Damage Crashes	ALL CRASHES	Fatalities	Serious Injuries	Minor Injuries	ALL CASUALTIES
<b>METROPOLITAN</b>									
Dry	23	313	3924	11889	16149	25	346	4743	5114
Wet	5	32	528	1706	2271	5	36	625	666
Unknown	1	2	5	24	32	1	2	5	8
<b>Sub-total</b>	<b>29</b>	<b>347</b>	<b>4457</b>	<b>13619</b>	<b>18452</b>	<b>31</b>	<b>384</b>	<b>5373</b>	<b>5788</b>
<b>RURAL</b>									
Dry	54	253	783	2384	3474	60	333	1054	1447
Wet	3	36	126	398	563	3	43	188	234
Unknown	0	1	3	11	15	0	1	3	4
<b>Sub-total</b>	<b>57</b>	<b>290</b>	<b>912</b>	<b>2793</b>	<b>4052</b>	<b>63</b>	<b>377</b>	<b>1245</b>	<b>1685</b>
<b>TOTAL</b>	<b>86</b>	<b>637</b>	<b>5369</b>	<b>16412</b>	<b>22504</b>	<b>94</b>	<b>761</b>	<b>6618</b>	<b>7473</b>

**Table 21: Crashes and Casualties by Route and Severity**

Route	Crashes					Casualties			
	Fatal Crashes	Serious Injury Crashes	Minor Injury Crashes	Property Damage Crashes	ALL CRASHES	Fatalities	Serious Injuries	Minor Injuries	ALL CASUALTIES
Anzac Highway	0	7	62	161	230	0	7	76	83
Barrier Highway	1	6	9	17	33	3	6	10	19
Cudlee Creek - Lobethal Rd	2	0	2	3	7	2	0	6	8
Dukes Highway	2	7	13	26	48	2	11	24	37
Eyre Highway	0	7	9	34	50	0	7	12	19
Gorge Rd	0	3	14	47	64	0	4	20	24
Lincoln Highway	0	5	9	24	38	0	7	10	17
Lyndoch - Chain of Ponds Rd	0	3	1	11	15	0	3	1	4
Lwr North East Road	0	0	1	5	6	0	0	3	3
Horrocks Hwy	1	8	15	25	49	1	11	26	38
Main North Road (M)	2	18	221	666	907	2	20	280	302
North East Road	1	6	103	270	380	1	7	133	141
Main South Road	0	7	15	35	57	0	10	25	35
Port Wakefield Road	5	8	27	65	105	6	14	52	72
Princess Highway	1	7	21	80	109	1	10	26	37
Riddoch Highway	1	5	10	27	43	1	5	20	26
SE Freeway	1	3	22	78	104	1	5	28	34
Southern Expressway	0	0	10	29	39	0	0	14	14
Stuart Highway	2	7	10	37	56	2	10	21	33
Sturt Highway	1	8	23	40	72	1	10	36	47
Tea Tree Gully - Mannum Rd	1	7	12	21	41	1	11	23	35
Victor Harbor Road	1	5	11	25	42	1	11	19	31

**Table 22a: Crashes and Casualties by Local Government Area & Severity  
Metropolitan Adelaide: Local Government Roads**

Local Government Area	Crashes					Casualties			
	Fatal Crashes	Serious Injury Crashes	Minor Injury Crashes	Property Damage Crashes	ALL CRASHES	Fatalities	Serious Injuries	Minor Injuries	ALL CASUALTIES
Adelaide Hills Council <sup>1</sup>	0	5	25	67	97	0	5	28	33
Alexandrina Council <sup>1</sup>	0	0	0	1	1	0	0	0	0
CC Campbelltown	0	1	21	103	125	0	1	26	27
CC Marion	0	8	60	251	319	0	8	61	69
CC Mitcham	0	2	61	197	260	0	2	68	70
CC Norwd, Pynhm & St Ptrs	0	4	30	140	174	0	4	30	34
City of Adelaide	0	16	281	852	1149	0	17	312	329
City of Burnside	0	2	20	108	130	0	2	21	23
City of Charles Sturt	0	4	60	315	379	0	5	70	75
City of Holdfast Bay	0	4	60	158	222	0	4	70	74
City of Onkaparinga	2	22	167	443	634	2	22	199	223
City of Playford	1	13	105	327	446	1	15	130	146
City of Port Adelaide Enfield	1	11	65	350	427	1	13	80	94
City of Prospect	0	4	12	52	68	0	4	15	19
City of Salisbury	0	16	114	368	498	0	18	132	150
City of Tea Tree Gully	0	3	38	160	201	0	3	44	47
City of Unley	0	2	38	158	198	0	2	42	44
City of West Torrens	0	3	60	215	278	0	3	65	68
CT Gawler	0	3	18	65	86	0	3	21	24
Walkerville Town Council	0	1	3	33	37	0	1	3	4
<b>Total</b>	<b>4</b>	<b>124</b>	<b>1238</b>	<b>4363</b>	<b>5729</b>	<b>4</b>	<b>132</b>	<b>1417</b>	<b>1553</b>

<sup>1</sup> Adelaide Hills Council and Alexandrina Council are situated in both rural South Australia and metropolitan Adelaide



**Table 22b: Crashes and Casualties by Local Government Area & Severity  
Metropolitan Adelaide: DPTI Roads**

Local Government Area	Crashes					Casualties			
	Fatal Crashes	Serious Injury Crashes	Minor Injury Crashes	Property Damage Crashes	ALL CRASHES	Fatalities	Serious Injuries	Minor Injuries	ALL CASUALTIES
Adelaide Hills Council <sup>1</sup>	0	15	48	148	211	0	18	55	73
CC Campbelltown	0	7	89	187	283	0	8	97	105
CC Marion	0	13	241	708	962	0	13	289	302
CC Mitcham	2	7	194	665	868	2	7	227	236
CC Norwd, Pynhm & St Ptrs	0	12	204	582	798	0	12	231	243
City of Adelaide	0	4	35	133	172	0	4	36	40
City of Burnside	0	7	101	264	372	0	7	113	120
City of Charles Sturt	3	21	396	1007	1427	4	27	495	526
City of Holdfast Bay	1	7	72	274	354	1	7	85	93
City of Onkaparinga	1	27	248	640	916	1	33	327	361
City of Playford	3	12	152	421	588	3	15	198	216
City of Port Adelaide Enfield	4	26	370	1137	1537	4	29	457	490
City of Prospect	0	7	100	300	407	0	7	125	132
City of Salisbury	6	18	380	989	1393	7	20	476	503
City of Tea Tree Gully	2	12	137	347	498	2	14	190	206
City of Unley	0	7	141	387	535	0	7	169	176
City of West Torrens	3	17	221	731	972	3	19	270	292
CT Gawler	0	1	36	153	190	0	1	52	53
Light Regional Council <sup>1</sup>	0	0	1	0	1	0	0	1	1
Walkerville Town Council	0	3	53	183	239	0	4	63	67
<b>Total</b>	<b>25</b>	<b>223</b>	<b>3219</b>	<b>9256</b>	<b>12723</b>	<b>27</b>	<b>252</b>	<b>3956</b>	<b>4235</b>

<sup>1</sup> Adelaide Hills Council and Light Regional Council are situated in both rural South Australia and metropolitan Adelaide

**Table 22c: Crashes and Casualties by Local Government Area & Severity  
Metropolitan Adelaide: All Roads**

Local Government Area	Crashes					Casualties			
	Fatal Crashes	Serious Injury Crashes	Minor Injury Crashes	Property Damage Crashes	ALL CRASHES	Fatalities	Serious Injuries	Minor Injuries	ALL CASUALTIES
Adelaide Hills Council <sup>1</sup>	0	20	73	215	<b>308</b>	0	23	83	<b>106</b>
Alexandrina Council <sup>1</sup>	0	0	0	1	<b>1</b>	0	0	0	<b>0</b>
CC Campbelltown	0	8	110	290	<b>408</b>	0	9	123	<b>132</b>
CC Marion	0	21	301	959	<b>1281</b>	0	21	350	<b>371</b>
CC Mitcham	2	9	255	862	<b>1128</b>	2	9	295	<b>306</b>
CC Norwd, Pynhm & St Ptrs	0	16	234	722	<b>972</b>	0	16	261	<b>277</b>
City of Adelaide	0	20	316	985	<b>1321</b>	0	21	348	<b>369</b>
City of Burnside	0	9	121	372	<b>502</b>	0	9	134	<b>143</b>
City of Charles Sturt	3	25	456	1322	<b>1806</b>	4	32	565	<b>601</b>
City of Holdfast Bay	1	11	132	432	<b>576</b>	1	11	155	<b>167</b>
City of Onkaparinga	3	49	415	1083	<b>1550</b>	3	55	526	<b>584</b>
City of Playford	4	25	257	748	<b>1034</b>	4	30	328	<b>362</b>
City of Port Adelaide Enfield	5	37	435	1487	<b>1964</b>	5	42	537	<b>584</b>
City of Prospect	0	11	112	352	<b>475</b>	0	11	140	<b>151</b>
City of Salisbury	6	34	494	1357	<b>1891</b>	7	38	608	<b>653</b>
City of Tea Tree Gully	2	15	175	507	<b>699</b>	2	17	234	<b>253</b>
City of Unley	0	9	179	545	<b>733</b>	0	9	211	<b>220</b>
City of West Torrens	3	20	281	946	<b>1250</b>	3	22	335	<b>360</b>
CT Gawler	0	4	54	218	<b>276</b>	0	4	73	<b>77</b>
Light Regional Council <sup>1</sup>	0	0	1	0	<b>1</b>	0	0	1	<b>1</b>
Walkerville Town Council	0	4	56	216	<b>276</b>	0	5	66	<b>71</b>
<b>Total</b>	<b>29</b>	<b>347</b>	<b>4457</b>	<b>13619</b>	<b>18452</b>	<b>31</b>	<b>384</b>	<b>5373</b>	<b>5788</b>

<sup>1</sup> Adelaide Hills Council, Alexandrina Council and Light Regional Council are situated in both rural South Australia and metropolitan Adelaide

**Table 23a: Crashes and Casualties by Local Government Area & Severity  
Rural: Local Government Roads**

Local Government Area	Crashes				ALL CRASHES	Casualties			
	Fatal Crashes	Serious Injury Crashes	Minor Injury Crashes	Property Damage Crashes		Fatalities	Serious Injuries	Minor Injuries	ALL CASUALTIES
Adelaide Hills Council	1	4	13	43	61	1	6	18	25
Alexandrina Council	0	6	29	58	93	0	6	34	40
Barossa Council	1	6	10	45	62	1	10	17	28
Barunga West DC	0	2	1	6	9	0	2	1	3
Berri Barmera Council	1	2	7	28	38	1	3	9	13
CC Mt Gambier	1	3	15	98	117	1	4	22	27
CC Port Augusta	0	2	13	39	54	0	2	18	20
CC Port Lincoln	1	2	12	32	47	1	2	13	16
CC Whyalla	0	4	12	77	93	0	4	12	16
Clare & Gilbert Valleys DC	0	2	7	22	31	0	2	9	11
Coorong DC	0	2	4	16	22	0	3	6	9
Copper Coast DC	0	3	12	40	55	0	3	19	22
DC Ceduna	0	1	1	5	7	0	1	1	2
DC Cleve	0	1	1	0	2	0	1	1	2
DC Coober Pedy	0	0	3	1	4	0	0	4	4
DC Elliston	1	0	0	3	4	1	0	0	1
DC Franklin Harbor	1	0	1	1	3	1	0	1	2
DC Grant	0	2	13	23	38	0	2	15	17
DC Karoonda East Murray	0	2	3	8	13	0	2	4	6
DC Kimba	0	0	0	2	2	0	0	0	0
DC Kingston	0	0	1	1	2	0	0	1	1
DC Lower Eyre Peninsula	0	2	6	7	15	0	2	7	9
DC Mallala	1	6	14	21	42	1	7	18	26
DC Mt Barker	0	5	28	90	123	0	5	28	33
DC Mt Remarkable	1	0	1	7	9	1	1	1	3
<b>Subtotal</b>	<b>9</b>	<b>57</b>	<b>207</b>	<b>673</b>	<b>946</b>	<b>9</b>	<b>68</b>	<b>259</b>	<b>336</b>

**Table 23a: Crashes and Casualties by Local Government Area & Severity**  
**Rural: Local Government Roads (cont...)**

Local Government Area	Crashes				ALL CRASHES	Casualties			
	Fatal Crashes	Serious Injury Crashes	Minor Injury Crashes	Property Damage Crashes		Fatalities	Serious Injuries	Minor Injuries	ALL CASUALTIES
DC Peterborough	0	1	0	3	4	0	1	0	1
DC Renmark Paringa	0	1	6	25	32	0	2	6	8
DC Robe	0	1	1	7	9	0	1	1	2
DC Streaky Bay	0	0	0	6	6	0	0	0	0
DC Tatiara	0	5	9	15	29	0	6	10	16
DC Tumby Bay	0	0	5	13	18	0	0	5	5
DC Victor Harbor	1	1	8	42	52	1	1	10	12
DC Wudinna	0	0	0	2	2	0	0	0	0
DC Yankallila	0	1	5	16	22	0	1	6	7
DC Yorke Peninsula	0	4	6	28	38	0	4	10	14
Flinders Rangers Council	0	2	2	5	9	0	2	3	5
Kangaroo Island Council	0	5	11	30	46	0	6	13	19
Light Regional Council	0	1	14	37	52	0	1	19	20
Loxton Waikarie DC	0	2	6	26	34	0	2	7	9
MC Roxby Downs	1	1	3	10	15	1	1	4	6
Mid Murray DC	1	5	9	26	41	1	5	17	23
Naracoorte Lucindale Council	0	1	4	22	27	0	1	5	6
Northern Areas Council	1	1	3	6	11	1	1	7	9
Port Pirie City DC	0	1	4	49	54	0	1	6	7
RC Goyder	0	4	4	8	16	0	5	8	13
RC Murray Bridge	0	3	16	75	94	0	3	19	22
Southern Mallee DC	0	0	2	9	11	0	0	2	2
Unincorporated (N & W)	1	2	7	20	30	1	3	12	16
Wakefield RC	0	0	4	8	12	0	0	8	8
Wattle Range Council	1	4	4	22	31	1	5	4	10
<b>Subtotal</b>	<b>6</b>	<b>46</b>	<b>133</b>	<b>510</b>	<b>695</b>	<b>6</b>	<b>52</b>	<b>182</b>	<b>240</b>
<b>Total</b>	<b>15</b>	<b>103</b>	<b>340</b>	<b>1183</b>	<b>1641</b>	<b>15</b>	<b>120</b>	<b>441</b>	<b>576</b>

**Table 23b: Crashes and Casualties by Local Government Area & Severity  
Rural: DPTI Roads**

Local Government Area	Crashes					Casualties			
	Fatal Crashes	Serious Injury Crashes	Minor Injury Crashes	Property Damage Crashes	ALL CRASHES	Fatalities	Serious Injuries	Minor Injuries	ALL CASUALTIES
Adelaide Hills Council	6	13	49	115	<b>183</b>	6	17	79	<b>102</b>
Alexandrina Council	3	10	36	90	<b>139</b>	3	18	52	<b>73</b>
Barossa Council	0	7	27	59	<b>93</b>	0	9	37	<b>46</b>
Barunga West DC	1	1	1	15	<b>18</b>	1	9	1	<b>11</b>
Berri Barmera Council	1	4	12	30	<b>47</b>	1	5	14	<b>20</b>
CC Mt Gambier	1	3	25	82	<b>111</b>	1	4	27	<b>32</b>
CC Port Augusta	0	2	8	43	<b>53</b>	0	2	11	<b>13</b>
CC Port Lincoln	0	0	11	48	<b>59</b>	0	0	12	<b>12</b>
CC Whyalla	0	2	4	27	<b>33</b>	0	3	5	<b>8</b>
Clare & Gilbert Valleys DC	1	6	12	33	<b>52</b>	1	7	13	<b>21</b>
Coorong DC	1	7	17	40	<b>65</b>	1	12	27	<b>40</b>
Copper Coast DC	0	3	12	22	<b>37</b>	0	7	13	<b>20</b>
DC Ceduna	0	3	2	8	<b>13</b>	0	3	3	<b>6</b>
DC Cleve	0	5	2	0	<b>7</b>	0	6	3	<b>9</b>
DC Coober Pedy	0	0	1	6	<b>7</b>	0	0	1	<b>1</b>
DC Elliston	0	1	1	7	<b>9</b>	0	1	1	<b>2</b>
DC Franklin Harbor	0	0	1	2	<b>3</b>	0	0	1	<b>1</b>
DC Grant	1	4	10	31	<b>46</b>	1	7	17	<b>25</b>
DC Karoonda East Murray	0	0	3	10	<b>13</b>	0	0	3	<b>3</b>
DC Kimba	0	4	0	5	<b>9</b>	0	4	0	<b>4</b>
DC Kingston	0	1	3	15	<b>19</b>	0	2	4	<b>6</b>
DC Lower Eyre Peninsula	1	1	2	15	<b>19</b>	1	2	2	<b>5</b>
DC Mallala	0	5	20	31	<b>56</b>	0	7	32	<b>39</b>
DC Mt Barker	4	10	53	173	<b>240</b>	4	15	67	<b>86</b>
DC Mt Remarkable	2	3	0	12	<b>17</b>	2	4	1	<b>7</b>
DC Orroroo/Carrieton	1	0	1	5	<b>7</b>	2	0	1	<b>3</b>
<b>Subtotal</b>	<b>23</b>	<b>95</b>	<b>313</b>	<b>924</b>	<b>1355</b>	<b>24</b>	<b>144</b>	<b>427</b>	<b>595</b>

**Table 23b: Crashes and Casualties by Local Government Area & Severity**  
**Rural: DPTI Roads (cont...)**

Local Government Area	Crashes					Casualties			
	Fatal Crashes	Serious Injury Crashes	Minor Injury Crashes	Property Damage Crashes	ALL CRASHES	Fatalities	Serious Injuries	Minor Injuries	ALL CASUALTIES
DC Peterborough	0	2	0	5	7	0	2	0	2
DC Renmark Paringa	0	2	13	21	36	0	3	16	19
DC Robe	0	0	2	8	10	0	0	2	2
DC Streaky Bay	0	3	4	5	12	0	3	6	9
DC Tatiara	1	3	8	30	42	1	5	10	16
DC Tumby Bay	0	0	1	8	9	0	0	1	1
DC Victor Harbor	1	5	13	41	60	1	5	18	24
DC Wudinna	0	0	0	7	7	0	0	0	0
DC Yankallila	0	5	11	33	49	0	5	17	22
DC Yorke Peninsula	1	10	12	31	54	2	10	17	29
Flinders Rangers Council	0	0	5	6	11	0	0	7	7
Kangaroo Island Council	0	1	1	13	15	0	1	2	3
Light Regional Council	3	4	23	52	82	3	8	37	48
Loxton Waikarie DC	1	7	12	34	54	1	9	18	28
MC Roxby Downs	0	1	1	2	4	0	1	1	2
Mid Murray DC	0	6	18	35	59	0	6	23	29
Naracoorte Lucindale Council	1	1	5	23	30	1	1	6	8
Northern Areas Council	0	2	9	13	24	0	4	15	19
Port Pirie City DC	1	2	6	33	42	2	2	7	11
RC Goyder	1	3	7	13	24	1	3	7	11
RC Murray Bridge	2	2	32	64	100	3	2	47	52
Southern Mallee DC	0	1	3	8	12	0	1	6	7
Unincorporated (Eastern)	0	0	2	0	2	0	0	2	2
Unincorporated (N & W)	3	18	40	108	169	5	25	64	94
Wakefield RC	4	8	16	46	74	4	11	25	40
Wattle Range Council	0	6	15	47	68	0	6	23	29
<b>Subtotal</b>	<b>19</b>	<b>92</b>	<b>259</b>	<b>686</b>	<b>1056</b>	<b>24</b>	<b>113</b>	<b>377</b>	<b>514</b>
<b>Total</b>	<b>42</b>	<b>187</b>	<b>572</b>	<b>1610</b>	<b>2411</b>	<b>48</b>	<b>257</b>	<b>804</b>	<b>1109</b>

**Table 23c: Crashes and Casualties by Local Government Area & Severity  
Rural: All Roads**

Local Government Area	Crashes					Casualties			
	Fatal Crashes	Serious Injury Crashes	Minor Injury Crashes	Property Damage Crashes	ALL CRASHES	Fatalities	Serious Injuries	Minor Injuries	ALL CASUALTIES
Adelaide Hills Council	7	17	62	158	<b>244</b>	7	23	97	<b>127</b>
Alexandrina Council	3	16	65	148	<b>232</b>	3	24	86	<b>113</b>
Barossa Council	1	13	37	104	<b>155</b>	1	19	54	<b>74</b>
Barunga West DC	1	3	2	21	<b>27</b>	1	11	2	<b>14</b>
Berri Barmera Council	2	6	19	58	<b>85</b>	2	8	23	<b>33</b>
CC Mt Gambier	2	6	40	180	<b>228</b>	2	8	49	<b>59</b>
CC Port Augusta	0	4	21	82	<b>107</b>	0	4	29	<b>33</b>
CC Port Lincoln	1	2	23	80	<b>106</b>	1	2	25	<b>28</b>
CC Whyalla	0	6	16	104	<b>126</b>	0	7	17	<b>24</b>
Clare & Gilbert Valleys DC	1	8	19	55	<b>83</b>	1	9	22	<b>32</b>
Coorong DC	1	9	21	56	<b>87</b>	1	15	33	<b>49</b>
Copper Coast DC	0	6	24	62	<b>92</b>	0	10	32	<b>42</b>
DC Ceduna	0	4	3	13	<b>20</b>	0	4	4	<b>8</b>
DC Cleve	0	6	3	0	<b>9</b>	0	7	4	<b>11</b>
DC Coober Pedy	0	0	4	7	<b>11</b>	0	0	5	<b>5</b>
DC Elliston	1	1	1	10	<b>13</b>	1	1	1	<b>3</b>
DC Franklin Harbor	1	0	2	3	<b>6</b>	1	0	2	<b>3</b>
DC Grant	1	6	23	54	<b>84</b>	1	9	32	<b>42</b>
DC Karoonda East Murray	0	2	6	18	<b>26</b>	0	2	7	<b>9</b>
DC Kimba	0	4	0	7	<b>11</b>	0	4	0	<b>4</b>
DC Kingston	0	1	4	16	<b>21</b>	0	2	5	<b>7</b>
DC Lower Eyre Peninsula	1	3	8	22	<b>34</b>	1	4	9	<b>14</b>
DC Mallala	1	11	34	52	<b>98</b>	1	14	50	<b>65</b>
DC Mt Barker	4	15	81	263	<b>363</b>	4	20	95	<b>119</b>
DC Mt Remarkable	3	3	1	19	<b>26</b>	3	5	2	<b>10</b>
DC Orroroo/Carrieton	1	0	1	5	<b>7</b>	2	0	1	<b>3</b>
<b>Subtotal</b>	<b>32</b>	<b>152</b>	<b>520</b>	<b>1597</b>	<b>2301</b>	<b>33</b>	<b>212</b>	<b>686</b>	<b>931</b>

**Table 23c: Crashes and Casualties by Local Government Area & Severity**  
**Rural: All Roads** (cont...)

Local Government Area	Crashes					Casualties			
	Fatal Crashes	Serious Injury Crashes	Minor Injury Crashes	Property Damage Crashes	ALL CRASHES	Fatalities	Serious Injuries	Minor Injuries	ALL CASUALTIES
DC Peterborough	0	3	0	8	11	0	3	0	3
DC Renmark Paringa	0	3	19	46	68	0	5	22	27
DC Robe	0	1	3	15	19	0	1	3	4
DC Streaky Bay	0	3	4	11	18	0	3	6	9
DC Tatiara	1	8	17	45	71	1	11	20	32
DC Tumby Bay	0	0	6	21	27	0	0	6	6
DC Victor Harbor	2	6	21	83	112	2	6	28	36
DC Wudinna	0	0	0	9	9	0	0	0	0
DC Yankallila	0	6	16	49	71	0	6	23	29
DC Yorke Peninsula	1	14	18	59	92	2	14	27	43
Flinders Rangers Council	0	2	7	11	20	0	2	10	12
Kangaroo Island Council	0	6	12	43	61	0	7	15	22
Light Regional Council	3	5	37	89	134	3	9	56	68
Loxton Waikarie DC	1	9	18	60	88	1	11	25	37
MC Roxby Downs	1	2	4	12	19	1	2	5	8
Mid Murray DC	1	11	27	61	100	1	11	40	52
Naracoorte Lucindale Council	1	2	9	45	57	1	2	11	14
Northern Areas Council	1	3	12	19	35	1	5	22	28
Port Pirie City DC	1	3	10	82	96	2	3	13	18
RC Goyder	1	7	11	21	40	1	8	15	24
RC Murray Bridge	2	5	48	139	194	3	5	66	74
Southern Mallee DC	0	1	5	17	23	0	1	8	9
Unincorporated (Eastern)	0	0	2	0	2	0	0	2	2
Unincorporated (N & W)	4	20	47	128	199	6	28	76	110
Wakefield RC	4	8	20	54	86	4	11	33	48
Wattle Range Council	1	10	19	69	99	1	11	27	39
<b>Subtotal</b>	<b>25</b>	<b>138</b>	<b>392</b>	<b>1196</b>	<b>1751</b>	<b>30</b>	<b>165</b>	<b>559</b>	<b>754</b>
<b>Total</b>	<b>57</b>	<b>290</b>	<b>912</b>	<b>2793</b>	<b>4052</b>	<b>63</b>	<b>377</b>	<b>1245</b>	<b>1685</b>



**Table 24a: Top Intersections**  
**Casualty Crashes, Base Year 2012**

Intersection	Base Year	Previous Years			
	2012	2011	2010	2009	2008
South Road – Torrens Road	13	10	11	13	8
Main North Road – Philip Highway	13	9	9	4	8
Salisbury Highway – Park Terrace	11	4	4	4	6
Wakefield Road – Fullarton Road	10	8	8	12	9
Hanson Road - Grand Junction Road	9	4	3	6	6
Main North Road – Grand Junction Road	9	12	11	3	5
Regency Road – Main North Road	9	11	8	10	15
Hampstead Road - Grand Junction Road	8	7	5	6	13
West Lakes Blvd - Frederick Road	8	6	1	3	3
Stephen Terrace - Northcote Terrace	8	6	4	7	5
Salisbury Highway - Elder Smith Drive	8	5	6	4	7
Portrush Road - Magill Road	8	10	7	4	5
Main North Road - Montague Road	8	5	6	8	10
Greenhill Road - Fullarton Road	8	6	1	4	2
Grand Junction Road - North East Road	8	10	3	5	4
Anzac Highway - Richmond Road	8	9	6	9	7
Maxwell Road - Main North Road	8	7	7	4	6
South Road - Manton Street	7	9	9	7	5
Cross Road – Belair Road	7	5	7	7	14
Woodville Road - Torrens Road	7	2	7	2	5
Waterloo Corner Road - Pt Wakefield Road	7	9	5	4	0
Sturt Road - South Road	7	8	7	4	7
Shepards Hill Road - Ayliffes Road	7	7	7	2	4
Churchill Road - Grand Junction Road	7	4	2	8	0
Henley Beach Road – Tapleys Hill Road	7	6	8	6	3
South Road – Black Road	7	1	2	2	2
Anzac Highway - Morphett Road	7	1	3	10	5
Diagonal Road - Oaklands Road	6	5	5	0	5
Kensington Road - Glynburn Road	6	1	3	1	2
Henley Beach Road - Holbrooks Road	6	9	3	3	3
Grange road - Findon Road	6	10	9	4	3
Globe Derby Road - Pt Wakefield Road	6	3	3	0	4
Fullarton Road - Magill Road	6	3	5	2	3
Eastern Parade - May Terrace	6	1	6	2	1
Aldinga Beach Road - Noarlunga-Cape Jervis Road	6	1	0	0	0
Adam Street - Port Road	6	4	6	5	5
Port Road - Queen Street	6	3	1	3	3
Nottage Terrace - Main North Road	6	3	6	2	4
Flinders Street - Fullarton Road	6	3	4	4	4
Prospect Road - Fitzroy Terrace	6	13	4	10	11
Sir Donald Bradman Dr - Sir Richard Wiliams Ave	6	2	4	4	1
South Road - Port Road	6	3	11	8	9
Surt Road - Morphett Road	6	4	2	10	6
Trimmer Parade - Frederick Road	6	3	0	3	4
Main North Road - Tolmer Road	6	2	5	3	3

**Table 24b: Top Intersections**  
All Crashes, Base Year 2012

Intersection	Base Year	Previous Years			
	2012	2011	2010	2009	2008
Wakefield Road – Fullarton Road	76	68	55	50	59
Main North Road – Grand Junction Road	45	53	45	32	26
Regency Road – Main North Road	44	38	31	36	38
Sturt Road – Marion Road	44	38	43	26	28
South Road – Port Road	41	36	31	29	34
Main North Road – McIntyre Road	38	43	29	16	28
Main North Road - Philip Highway	37	25	20	16	18
South Road – Manton Street	35	29	31	29	19
Smart Road - Reservoir Road	31	29	16	19	13
Saints Road – Main North Road	30	28	23	19	31
Grand Junction Road - North East Road	30	19	17	22	10
Grenhill Road - Fullarton Road	29	17	11	11	14
Salisbury Highway - Park Terrace	29	15	15	19	19
South Road – Torrens Road	29	33	36	33	32
Muno Para Blvd - Main North Road	28	20	18	18	20
Stephen Terrace - Northcote Terrace	28	18	17	20	15
Anzac Highway – Richmond Road	28	24	29	22	21
Hampstead Road - Grand Junction Road	28	35	21	24	31
Salisbury Highway – Elder Smith Drive	27	21	31	21	24
Henley Beach Road - Tapleys Hill Road	26	31	18	23	12
Main North Road – Montague Road	26	24	29	30	30
Marion Road - Sir Donald Bradman Drive	26	22	20	19	12
Portrush Road - Magill Road	26	35	16	15	22
Prospect Road – Fitzroy Terrace	26	38	27	30	30
Sir Donald Bradman Road - South Road	26	29	15	16	19
Sir Donald Bradman Road – West Terrace	26	24	24	25	35
Sudholz Road – North East Road	25	40	28	39	27
Marion Road – Richmond Road	25	25	22	25	32
Cross Road - Belair Road	25	25	16	22	29
Marion Road - Daws Road	25	15	16	23	21
Marion Road - Henley Beach Road	25	26	21	18	24
Hanson Road - Grand Junction Road	24	24	15	19	27
Sturt Road – South Road	24	26	29	19	17
Sturt Road - South Road	24	19	11	18	15
Woolville Road - Port Road	24	16	14	8	21
Adam Street - Port Road	23	19	25	15	14
Sturt Road - Morphett Road	23	19	8	20	19
Goodwood Road - Greenhill Road	23	17	12	14	17
Henley Beach Road - Holbrooks Road	22	24	17	16	15
Maxwell Road – Main North Road	22	17	28	12	16
Waterloo Corner Road - Pt Wakefield Road	22	25	9	5	7
Flinders Street - Fullarton Road	22	21	9	16	14

**Table 25: Motor Vehicles Involved in & Responsible for Crashes by Crash Type and Severity**

Vehicle Type & Crash Type	Fatal Crashes		Serious Injury Crashes		Minor Injury Crashes		Property Damage Crashes		ALL CRASHES	
	Involved	Responsible	Involved	Responsible	Involved	Responsible	Involved	Responsible	Involved	Responsible
<b>PASSENGER VEHICLES</b>	<b>95</b>	<b>58</b>	<b>690</b>	<b>435</b>	<b>9037</b>	<b>4601</b>	<b>29663</b>	<b>14755</b>	<b>39485</b>	<b>19849</b>
Head On	21	11	56	30	159	70	279	139	515	250
Rear End	10	4	70	24	4286	1780	11859	5213	16225	7021
Side Swipe	1	0	35	21	568	301	3853	1845	4457	2167
Right Angle	12	8	153	79	1778	958	5605	2822	7548	3867
Right Turn	3	2	58	39	916	486	2176	1071	3153	1598
Hit Parked Vehicle	0	0	34	15	240	117	3033	1401	3307	1533
Hit Fixed Object	30	24	155	146	586	550	1961	1839	2732	2559
Hit Pedestrian	8	1	66	21	257	129	5	2	336	153
Hit Animal	1	0	1	0	16	1	390	9	408	10
Hit Object On Road	0	0	1	1	11	9	66	59	78	69
Roll Over	7	6	54	52	183	173	252	240	496	471
Left Road - Out Of Control	1	1	4	4	20	18	66	64	91	87
Other	1	1	3	3	17	9	118	51	139	64
<b>LIGHT TRUCKS(&gt;4.5 Tonnes)</b>	<b>0</b>	<b>0</b>	<b>1</b>	<b>0</b>	<b>15</b>	<b>8</b>	<b>82</b>	<b>56</b>	<b>98</b>	<b>64</b>
Head On	0	0	1	0	0	0	1	1	2	1
Rear End	0	0	0	0	7	5	33	20	40	25
Side Swipe	0	0	0	0	3	1	7	3	10	4
Right Angle	0	0	0	0	0	0	14	7	14	7
Right Turn	0	0	0	0	0	0	2	2	2	2
Hit Parked Vehicle	0	0	0	0	2	0	15	14	17	14
Hit Fixed Object	0	0	0	0	0	0	7	7	7	7
Hit Pedestrian	0	0	0	0	2	1	0	0	2	1
Hit Animal	0	0	0	0	0	0	1	0	1	0
Roll Over	0	0	0	0	1	1	2	2	3	3
<b>BICYCLISTS</b>	<b>3</b>	<b>1</b>	<b>84</b>	<b>35</b>	<b>526</b>	<b>123</b>	<b>105</b>	<b>23</b>	<b>718</b>	<b>182</b>
Head On	0	0	0	0	5	3	1	1	6	4
Rear End	2	0	6	1	30	8	9	3	47	12
Side Swipe	0	0	20	7	114	16	27	5	161	28
Right Angle	0	0	11	2	182	24	39	6	232	32
Right Turn	0	0	14	1	66	1	15	2	95	4
Hit Parked Vehicle	0	0	7	4	37	10	5	2	49	16
Hit Fixed Object	0	0	8	7	27	22	1	0	36	29
Hit Pedestrian	0	0	1	0	13	2	0	0	14	2
Hit Animal	0	0	0	0	1	0	1	0	2	0
Hit Object On Road	0	0	1	1	3	3	0	0	4	4
Roll Over	1	1	14	12	46	34	7	4	68	51
Other	0	0	2	0	2	0	0	0	4	0

**Table 25: Motor Vehicles Involved in & Responsible for Crashes by Crash Type and Severity (cont...)**

Vehicle Type & Crash Type	Fatal Crashes		Serious Injury Crashes		Minor Injury Crashes		Property Damage Crashes		ALL CRASHES	
	Involved	Responsible	Involved	Responsible	Involved	Responsible	Involved	Responsible	Involved	Responsible
<b>HEAVY VEHICLE<sup>1</sup></b>	<b>16</b>	<b>3</b>	<b>43</b>	<b>17</b>	<b>251</b>	<b>154</b>	<b>1161</b>	<b>736</b>	<b>1471</b>	<b>910</b>
Head On	6	0	8	0	6	3	24	8	44	11
Rear End	1	1	7	4	94	67	277	188	379	260
Side Swipe	1	1	9	3	53	32	360	225	423	261
Right Angle	6	0	5	1	39	13	148	45	198	59
Right Turn	1	0	2	1	10	4	30	14	43	19
Hit Parked Vehicle	0	0	2	0	13	6	160	120	175	126
Hit Fixed Object	0	0	2	2	14	11	90	81	106	94
Hit Pedestrian	0	0	4	2	0	0	0	0	4	2
Hit Animal	0	0	0	0	0	0	14	0	14	0
Hit Object On Road	0	0	0	0	1	0	6	6	7	6
Roll Over	1	1	4	4	16	15	26	24	47	44
Left Road - Out Of Control	0	0	0	0	1	0	6	6	7	6
Other	0	0	0	0	4	3	20	19	24	22
<b>BUSES</b>	<b>1</b>	<b>1</b>	<b>6</b>	<b>2</b>	<b>71</b>	<b>28</b>	<b>257</b>	<b>115</b>	<b>335</b>	<b>146</b>
Head On	0	0	0	0	2	0	4	0	6	0
Rear End	0	0	0	0	34	11	77	37	111	48
Side Swipe	0	0	0	0	12	5	89	43	101	48
Right Angle	0	0	1	1	10	6	43	9	54	16
Right Turn	0	0	1	0	10	3	7	1	18	4
Hit Parked Vehicle	0	0	0	0	0	0	31	19	31	19
Hit Fixed Object	0	0	0	0	1	1	5	5	6	6
Hit Pedestrian	0	0	3	0	1	1	0	0	4	1
Roll Over	0	0	0	0	0	0	1	1	1	1
Other	1	1	1	1	1	1	0	0	3	3

<sup>1</sup> Excludes Buses

**Table 25: Motor Vehicles Involved in & Responsible for Crashes by Crash Type and Severity (cont...)**

Vehicle Type & Crash Type	Fatal Crashes		Serious Injury Crashes		Minor Injury Crashes		Property Damage Crashes		ALL CRASHES	
	Involved	Responsible	Involved	Responsible	Involved	Responsible	Involved	Responsible	Involved	Responsible
<b>MOTORCYCLES</b>	<b>17</b>	<b>12</b>	<b>120</b>	<b>76</b>	<b>354</b>	<b>191</b>	<b>226</b>	<b>107</b>	<b>717</b>	<b>386</b>
Head On	3	3	9	5	6	6	2	2	20	16
Rear End	5	2	14	12	46	28	64	36	129	78
Side Swipe	2	1	6	2	42	19	32	12	82	34
Right Angle	1	0	17	4	70	9	33	9	121	22
Right Turn	0	0	12	1	27	2	21	3	60	6
Hit Parked Vehicle	0	0	2	2	0	0	15	2	17	4
Hit Fixed Object	5	5	23	22	40	36	13	11	81	74
Hit Pedestrian	0	0	0	0	3	0	1	0	4	0
Hit Animal	0	0	5	0	5	0	2	0	12	0
Hit Object On Road	0	0	3	3	3	3	4	2	10	8
Roll Over	1	1	26	22	101	79	38	29	166	131
Left Road - Out Of Control	0	0	3	3	10	9	1	1	14	13
Other	0	0	0	0	1	0	0	0	1	0
<b>OTHERS VEHICLE TYPES</b>	<b>3</b>	<b>1</b>	<b>5</b>	<b>4</b>	<b>37</b>	<b>25</b>	<b>124</b>	<b>79</b>	<b>169</b>	<b>109</b>
Head On	0	0	0	0	0	0	4	3	4	3
Rear End	0	0	0	0	9	6	22	17	31	23
Side Swipe	1	0	2	1	5	2	36	18	44	21
Right Angle	2	1	1	1	10	6	22	9	35	17
Right Turn	0	0	1	1	1	1	1	1	3	3
Hit Parked Vehicle	0	0	0	0	4	3	17	14	21	17
Hit Fixed Object	0	0	1	1	1	1	11	9	13	11
Hit Pedestrian	0	0	0	0	2	1	0	0	2	1
Hit Animal	0	0	0	0	0	0	3	0	3	0
Hit Object On Road	0	0	0	0	0	0	1	1	1	1
Roll Over	0	0	0	0	5	5	3	3	8	8
Other	0	0	0	0	0	0	4	4	4	4
<b>TOTAL</b>	<b>135</b>	<b>76</b>	<b>949</b>	<b>569</b>	<b>10291</b>	<b>5130</b>	<b>31618</b>	<b>15871</b>	<b>42993</b>	<b>21646</b>

**Table 26: Crashes and Casualties by Vehicle Movement of Motor Vehicle Responsible and Severity (excl Pedestrian)**

Vehicle Movement of Responsible Unit	Crashes					Casualties			
	Fatal Crashes	Serious Injury Crashes	Minor Injury Crashes	Property Damage Crashes	ALL CRASHES	Fatalities	Serious Injuries	Minor Injuries	ALL CASUALTIES
Right Turn	3	79	869	2313	3264	3	90	1127	1220
Left Turn	0	17	295	934	1246	0	17	327	344
U Turn	0	6	76	360	442	0	9	94	103
Swerving	1	27	212	1289	1529	1	30	251	282
Reversing	0	3	32	375	410	0	3	34	37
Stopped on Carriageway	0	0	6	1	7	0	0	6	6
Straight Ahead	66	395	3233	8786	12480	74	490	4046	4610
Entering Private Driveway	0	4	45	133	182	0	5	53	58
Leaving Private Driveway	3	16	180	846	1045	3	24	215	242
Parked	0	3	31	52	86	0	3	31	34
Parking - Angle	0	1	5	12	18	0	1	5	6
Parking - Parallel	0	0	14	75	89	0	0	14	14
Unparking -Angle	0	1	5	96	102	0	1	5	6
UnParking - Parallel	1	1	37	222	261	1	1	37	39
Overtaking - on Right	2	13	75	263	353	2	15	90	107
Overtaking - on Left	0	3	14	112	129	0	3	18	21
Other	0	0	1	2	3	0	0	1	1
<b>TOTAL</b>	<b>76</b>	<b>569</b>	<b>5130</b>	<b>15871</b>	<b>21646</b>	<b>84</b>	<b>692</b>	<b>6354</b>	<b>7130</b>

NOTE: Excludes data for crashes where responsibility not attributed to a road user. For example, responsibility not recorded or unriden animal responsible

**Table 27: Crashes and Casualties Involving Pedestrians by Pedestrian Responsible Movement and Severity**

Pedestrian Movement	Crashes					Casualties			
	Fatal Crashes	Serious Injury Crashes	Minor Injury Crashes	Property Damage Crashes	ALL CRASHES	Fatalities	Serious Injuries	Minor Injuries	ALL CASUALTIES
Left Turn	0	0	1	0	1	0	0	1	1
Swerving	0	0	1	0	1	0	0	1	1
Straight Ahead	1	0	4	2	7	1	0	4	5
Walking on Footpath	0	0	1	0	1	0	0	1	1
On Pedestrian Crossing	1	3	4	0	8	1	3	4	8
Within 30m of Pedestrian Crossing	1	1	2	0	4	1	1	2	4
Alighted from Parked Vehicle	0	1	2	0	3	0	1	2	3
Walked from between Parked Vehicles	0	0	1	0	1	0	0	1	1
Walking on Road	0	8	23	1	32	0	8	26	34
Pushing or Working on Vehicle	0	0	1	0	1	0	0	1	1
Playing on Roadway	0	0	2	0	2	0	0	3	3
Crossing without Control	5	36	86	3	130	5	36	91	132
Crossing with Traffic Signals	0	1	5	0	6	0	1	5	6
<b>TOTAL</b>	<b>8</b>	<b>50</b>	<b>133</b>	<b>6</b>	<b>197</b>	<b>8</b>	<b>50</b>	<b>142</b>	<b>200</b>

**Table 28: Crashes by Motor Vehicle Type Involved and Severity<sup>1</sup>**

<b>Type of Vehicle<sup>1</sup></b>	<b>Fatal Crashes</b>	<b>Serious Injury Crashes</b>	<b>Minor Injury Crashes</b>	<b>Property Damage Crashes</b>	<b>ALL CRASHES</b>
Passenger Vehicle	87	592	6719	22674	<b>30072</b>
Light Truck (>4.5 Tonnes)	0	1	15	82	<b>98</b>
Heavy Vehicle	16	42	240	1138	<b>1436</b>
Buses	1	6	69	251	<b>327</b>
Motorcycles	14	116	349	217	<b>696</b>
Bicycles	3	77	515	101	<b>696</b>
Other	2	5	36	120	<b>163</b>

<sup>1</sup> The vehicle type categories are not mutually exclusive and must not be added together

# ROAD CASUALTIES in 2012

---

Road Users  
Seatbelts & Helmets  
Age & Sex Distribution  
Alcohol  
Licence  
Involvement & Responsibility



**Table 29: Casualties by Road User Type, Severity, Age and Sex**

Road User Types	Sex	0-15			16-19			20-24			25-29			30-39			40-49			50-59			60-69			70+			Unknown			ALL CASUALTIES			
		F	SI	MI	F	SI	MI	F	SI	MI	F	SI	MI	F	SI	MI	F	SI	MI	F	SI	MI	F	SI	MI	F	SI	MI	F	SI	MI				
<b>VEHICLE OCCUPANT</b>																																			
Driver	M	0	1	1	4	20	146	3	30	236	3	28	199	6	30	324	9	37	282	4	24	234	2	17	148	8	20	170	0	0	5	39	207	1745	
	F	0	0	0	0	15	216	1	25	327	0	8	277	2	18	484	2	12	417	1	22	289	2	19	166	5	23	96	0	1	12	13	143	2284	
	<b>Subtotal<sup>1</sup></b>	<b>0</b>	<b>1</b>	<b>1</b>	<b>4</b>	<b>35</b>	<b>362</b>	<b>4</b>	<b>55</b>	<b>563</b>	<b>3</b>	<b>36</b>	<b>476</b>	<b>8</b>	<b>48</b>	<b>808</b>	<b>11</b>	<b>49</b>	<b>699</b>	<b>5</b>	<b>46</b>	<b>523</b>	<b>4</b>	<b>36</b>	<b>314</b>	<b>13</b>	<b>43</b>	<b>266</b>	<b>0</b>	<b>1</b>	<b>17</b>	<b>52</b>	<b>350</b>	<b>4029</b>	
Passenger	M	1	10	159	3	11	71	1	11	53	1	15	35	0	5	46	1	5	27	0	3	30	0	2	8	1	5	21	0	3	74	8	70	524	
	F	0	7	165	0	10	94	1	8	79	2	4	65	0	4	90	0	5	60	1	4	73	0	6	64	2	9	70	0	10	138	6	67	898	
	<b>Subtotal<sup>1</sup></b>	<b>1</b>	<b>17</b>	<b>328</b>	<b>3</b>	<b>21</b>	<b>165</b>	<b>2</b>	<b>19</b>	<b>132</b>	<b>3</b>	<b>19</b>	<b>100</b>	<b>0</b>	<b>9</b>	<b>136</b>	<b>1</b>	<b>10</b>	<b>87</b>	<b>1</b>	<b>7</b>	<b>103</b>	<b>0</b>	<b>8</b>	<b>72</b>	<b>3</b>	<b>14</b>	<b>91</b>	<b>0</b>	<b>13</b>	<b>217</b>	<b>14</b>	<b>137</b>	<b>1431</b>	
<b>MOTORCYCLIST</b>																																			
Rider	M	0	1	3	0	7	35	3	9	55	1	15	38	1	27	52	2	21	51	4	14	50	2	10	13	0	1	8	0	1	2	13	106	307	
	F	0	0	0	0	0	1	0	1	1	0	1	9	0	0	7	0	4	6	0	1	6	0	0	1	0	0	0	0	0	1	0	7	32	
	<b>Subtotal<sup>1</sup></b>	<b>0</b>	<b>1</b>	<b>3</b>	<b>0</b>	<b>7</b>	<b>36</b>	<b>3</b>	<b>10</b>	<b>56</b>	<b>1</b>	<b>16</b>	<b>47</b>	<b>1</b>	<b>27</b>	<b>59</b>	<b>2</b>	<b>25</b>	<b>57</b>	<b>4</b>	<b>15</b>	<b>56</b>	<b>2</b>	<b>10</b>	<b>14</b>	<b>0</b>	<b>1</b>	<b>8</b>	<b>0</b>	<b>1</b>	<b>3</b>	<b>13</b>	<b>113</b>	<b>339</b>	
Pillion Passenger	M	0	0	0	0	0	1	0	2	1	0	0	0	0	0	0	0	1	0	0	1	0	0	0	0	0	0	0	0	0	0	0	2	4	
	F	1	0	2	0	0	1	0	0	1	0	0	1	0	0	0	0	3	4	0	0	1	1	1	0	0	0	0	0	0	0	0	2	4	10
	<b>Subtotal<sup>1</sup></b>	<b>1</b>	<b>0</b>	<b>2</b>	<b>0</b>	<b>0</b>	<b>2</b>	<b>0</b>	<b>2</b>	<b>2</b>	<b>0</b>	<b>0</b>	<b>1</b>	<b>0</b>	<b>0</b>	<b>0</b>	<b>0</b>	<b>3</b>	<b>5</b>	<b>0</b>	<b>0</b>	<b>2</b>	<b>1</b>	<b>1</b>	<b>0</b>	<b>0</b>	<b>0</b>	<b>0</b>	<b>0</b>	<b>0</b>	<b>0</b>	<b>2</b>	<b>6</b>	<b>14</b>	
<b>PEDESTRIAN</b>																																			
M	M	1	2	18	0	3	13	1	7	20	0	2	7	0	6	13	2	7	18	0	5	16	0	5	15	5	7	23	0	3	11	9	47	154	
	F	0	6	12	0	3	9	0	6	13	0	1	8	0	1	18	0	2	14	0	4	12	0	2	18	1	3	20	0	2	8	1	30	132	
	<b>Subtotal<sup>1</sup></b>	<b>1</b>	<b>8</b>	<b>30</b>	<b>0</b>	<b>6</b>	<b>22</b>	<b>1</b>	<b>13</b>	<b>33</b>	<b>0</b>	<b>3</b>	<b>15</b>	<b>0</b>	<b>7</b>	<b>31</b>	<b>2</b>	<b>9</b>	<b>32</b>	<b>0</b>	<b>9</b>	<b>28</b>	<b>0</b>	<b>7</b>	<b>33</b>	<b>6</b>	<b>10</b>	<b>43</b>	<b>0</b>	<b>5</b>	<b>20</b>	<b>10</b>	<b>77</b>	<b>287</b>	
<b>BICYCLIST</b>																																			
M	M	0	4	19	0	7	22	0	3	36	0	1	40	0	13	81	0	14	94	1	12	57	2	7	28	0	5	13	0	1	12	3	67	402	
	F	0	1	3	0	0	6	0	2	14	0	0	15	0	2	21	0	2	22	0	2	14	0	1	3	0	0	2	0	1	6	0	11	106	
	<b>Subtotal<sup>1</sup></b>	<b>0</b>	<b>5</b>	<b>22</b>	<b>0</b>	<b>7</b>	<b>28</b>	<b>0</b>	<b>5</b>	<b>50</b>	<b>0</b>	<b>1</b>	<b>55</b>	<b>0</b>	<b>15</b>	<b>102</b>	<b>0</b>	<b>16</b>	<b>116</b>	<b>1</b>	<b>14</b>	<b>71</b>	<b>2</b>	<b>8</b>	<b>31</b>	<b>0</b>	<b>5</b>	<b>15</b>	<b>0</b>	<b>2</b>	<b>18</b>	<b>3</b>	<b>78</b>	<b>508</b>	
<b>OTHER ROAD USER</b>																																			
M	M	0	0	6	0	0	1	0	0	0	0	0	0	0	1	0	0	0	0	0	0	0	0	0	0	0	0	0	0	0	0	0	0	8	
	F	0	0	1	0	0	0	0	0	0	0	0	0	0	0	0	0	0	0	0	0	0	0	0	0	0	0	0	0	0	0	0	0	2	
	<b>Subtotal<sup>1</sup></b>	<b>0</b>	<b>0</b>	<b>7</b>	<b>0</b>	<b>0</b>	<b>1</b>	<b>0</b>	<b>0</b>	<b>0</b>	<b>0</b>	<b>0</b>	<b>0</b>	<b>0</b>	<b>0</b>	<b>1</b>	<b>0</b>	<b>0</b>	<b>0</b>	<b>0</b>	<b>0</b>	<b>0</b>	<b>0</b>	<b>0</b>	<b>0</b>	<b>0</b>	<b>0</b>	<b>0</b>	<b>0</b>	<b>0</b>	<b>0</b>	<b>0</b>	<b>0</b>	<b>10</b>	
<b>ALL ROAD USERS</b>																																			
M	M	2	18	206	7	48	289	8	62	401	5	61	319	7	81	517	14	84	473	9	58	388	6	41	212	14	38	235	0	8	104	72	499	3144	
	F	1	14	183	0	28	327	2	42	435	2	14	375	2	25	620	2	28	523	2	33	396	3	29	252	8	35	188	0	14	165	22	262	3464	
	<b>TOTAL<sup>1</sup></b>	<b>3</b>	<b>32</b>	<b>393</b>	<b>7</b>	<b>76</b>	<b>616</b>	<b>10</b>	<b>104</b>	<b>836</b>	<b>7</b>	<b>75</b>	<b>694</b>	<b>9</b>	<b>106</b>	<b>1137</b>	<b>16</b>	<b>112</b>	<b>996</b>	<b>11</b>	<b>91</b>	<b>784</b>	<b>9</b>	<b>70</b>	<b>464</b>	<b>22</b>	<b>73</b>	<b>423</b>	<b>0</b>	<b>22</b>	<b>275</b>	<b>94</b>	<b>761</b>	<b>6618</b>	

<sup>1</sup>Unknown sex included

## Table 30: Casualties by Unit Type and Severity

Unit Type	Fatalities	Serious Injuries	Minor Injuries	ALL CASUALTIES
Passenger Vehicle	63	470	5345	5878
Light Truck (<4.5Tonnes)	0	0	2	2
Heavy Vehicle <sup>1</sup>	2	10	68	80
Bus	1	3	35	39
Motorcycle	15	119	353	487
Bicycle	3	78	508	589
Pedestrian	10	77	287	374
Other	0	4	20	24
<b>TOTAL</b>	<b>94</b>	<b>761</b>	<b>6618</b>	<b>7473</b>

## Table 31: Motor Vehicle Casualties by Position in Vehicle and Severity (excl. Motorcycles & Bicycles)

Position in Vehicle	Fatalities	Serious Injuries	Minor Injuries	ALL CASUALTIES
<b>FRONT SEAT PASSENGER</b>				
Driver <sup>2</sup>	52	350	4030	4432
Middle	0	2	7	9
Left	9	81	912	1002
<b>REAR SEAT PASSENGER</b>				
Right	0	12	139	151
Middle	1	4	47	52
Left	1	19	164	184
<b>CHILD NURSED</b>				
Front	0	0	0	0
Rear	0	0	0	0
<b>UTILITY/TRUCK</b>				
Rear	2	2	0	4
<b>VAN</b>				
Passenger	0	1	1	2
<b>BUS</b>				
Passenger	1	3	23	27
<b>MOTORCYCLE</b>				
Rider	13	113	339	465
Passenger	2	6	14	22
<b>TOWED VEHICLE</b>				
Occupant	0	0	0	0
<b>UNKNOWN/OTHER</b>				
	0	13	138	151
<b>TOTAL<sup>3</sup></b>	<b>94</b>	<b>761</b>	<b>6618</b>	<b>7473</b>

<sup>1</sup> Excludes Buses

<sup>2</sup> Includes drivers of all vehicles – passenger, heavy truck, light truck & other

<sup>3</sup> Includes not applicable vehicle occupant user types

**Table 32: Casualties by Road User Type, Safety Device and Severity**

Casualty Type & Safety Device Use <sup>1</sup>	Fatalities	Serious Injuries	Minor Injuries	ALL CASUALTIES
<b>DRIVER</b>				
Fitted – Worn	33	226	3509	<b>3768</b>
Fitted – Not Worn	16	15	40	<b>71</b>
Fitted – Unknown if Worn	1	31	163	<b>195</b>
Child Restraint – Worn	0	0	1	<b>1</b>
Not Fitted	0	1	4	<b>5</b>
Unknown	2	77	312	<b>391</b>
<b>Subtotal</b>	<b>52</b>	<b>350</b>	<b>4029</b>	<b>4431</b>
<b>PASSENGER</b>				
Fitted – Worn	7	70	1165	<b>1242</b>
Fitted – Not Worn	2	10	22	<b>34</b>
Fitted – Unknown if Worn	1	15	56	<b>72</b>
Child Restraint – Worn	0	4	55	<b>59</b>
Child Restraint – Not Worn	0	0	1	<b>1</b>
Not Fitted	3	4	11	<b>18</b>
Not Applicable	0	3	9	<b>12</b>
Unknown	1	31	112	<b>144</b>
<b>Subtotal</b>	<b>14</b>	<b>137</b>	<b>1431</b>	<b>1582</b>
<b>MOTORCYCLE RIDER/PASSENGER</b>				
Helmet Worn	14	109	339	<b>462</b>
Helmet – Not Worn	1	8	6	<b>15</b>
Unknown	0	2	8	<b>10</b>
<b>Subtotal</b>	<b>15</b>	<b>119</b>	<b>353</b>	<b>487</b>
<b>BICYCLIST RIDER/PASSENGER</b>				
Helmet Worn	3	72	473	<b>548</b>
Helmet – Not Worn	0	2	9	<b>11</b>
Unknown	0	4	26	<b>30</b>
<b>Subtotal</b>	<b>3</b>	<b>78</b>	<b>508</b>	<b>589</b>
<b>ALL CASUALTIES</b>				
Device Worn	57	481	5542	<b>6080</b>
Device Not Worn	22	40	93	<b>155</b>
Unknown/Not Applicable	5	163	686	<b>854</b>
<b>TOTAL<sup>2</sup></b>	<b>94</b>	<b>761</b>	<b>6618</b>	<b>7473</b>

<sup>1</sup> Police reporting of safety device usage is often not based on direct observation by police officers and may be reliant upon statements by the casualties themselves or other involved parties.

<sup>2</sup> Includes not applicable safety device use/users

**Table 33a: Driver and Motorcycle Rider Casualties by Age, Sex, BAC Fatal**

Age	Sex	Blood Alcohol Concentration						Not Tested/ Unknown	ALL CAUSALITIES
		Negative	0.001-0.049	0.050-0.079	0.080-0.149	0.150-0.199	.200+		
0-15	M	0	0	0	0	0	0	0	0
	F	0	0	0	0	0	0	0	0
	<b>Subtotal<sup>1</sup></b>	<b>0</b>	<b>0</b>	<b>0</b>	<b>0</b>	<b>0</b>	<b>0</b>	<b>0</b>	<b>0</b>
16-19	M	2	0	0	1	1	0	0	4
	F	0	0	0	0	0	0	0	0
	<b>Subtotal<sup>1</sup></b>	<b>2</b>	<b>0</b>	<b>0</b>	<b>1</b>	<b>1</b>	<b>0</b>	<b>0</b>	<b>4</b>
20-24	M	4	0	0	0	0	2	0	6
	F	1	0	0	0	0	0	0	1
	<b>Subtotal<sup>1</sup></b>	<b>5</b>	<b>0</b>	<b>0</b>	<b>0</b>	<b>0</b>	<b>2</b>	<b>0</b>	<b>7</b>
25-29	M	2	0	0	1	0	1	0	4
	F	0	0	0	0	0	0	0	0
	<b>Subtotal<sup>1</sup></b>	<b>2</b>	<b>0</b>	<b>0</b>	<b>1</b>	<b>0</b>	<b>1</b>	<b>0</b>	<b>4</b>
30-39	M	4	0	0	0	0	3	0	7
	F	1	0	0	0	1	0	0	2
	<b>Subtotal<sup>1</sup></b>	<b>5</b>	<b>0</b>	<b>0</b>	<b>0</b>	<b>1</b>	<b>3</b>	<b>0</b>	<b>9</b>
40-49	M	6	1	0	0	0	2	2	11
	F	2	0	0	0	0	0	0	2
	<b>Subtotal<sup>1</sup></b>	<b>8</b>	<b>1</b>	<b>0</b>	<b>0</b>	<b>0</b>	<b>2</b>	<b>2</b>	<b>13</b>
50-59	M	5	1	0	0	1	0	1	8
	F	1	0	0	0	0	0	0	1
	<b>Subtotal<sup>1</sup></b>	<b>6</b>	<b>1</b>	<b>0</b>	<b>0</b>	<b>1</b>	<b>0</b>	<b>1</b>	<b>9</b>
60-69	M	4	0	0	0	0	0	0	4
	F	1	0	0	0	0	0	1	2
	<b>Subtotal<sup>1</sup></b>	<b>5</b>	<b>0</b>	<b>0</b>	<b>0</b>	<b>0</b>	<b>0</b>	<b>1</b>	<b>6</b>
70+	M	6	0	0	0	0	0	2	8
	F	4	0	0	0	0	0	1	5
	<b>Subtotal<sup>1</sup></b>	<b>10</b>	<b>0</b>	<b>0</b>	<b>0</b>	<b>0</b>	<b>0</b>	<b>3</b>	<b>13</b>
Unknown	M	0	0	0	0	0	0	0	0
	F	0	0	0	0	0	0	0	0
	<b>Subtotal<sup>1</sup></b>	<b>0</b>	<b>0</b>	<b>0</b>	<b>0</b>	<b>0</b>	<b>0</b>	<b>0</b>	<b>0</b>
ALL AGES	M	33	2	0	2	2	8	5	52
	F	10	0	0	0	1	0	2	13
	<b>TOTAL<sup>1</sup></b>	<b>43</b>	<b>2</b>	<b>0</b>	<b>2</b>	<b>3</b>	<b>8</b>	<b>7</b>	<b>65</b>

<sup>1</sup> Unknown sex included

**Table 33b: Driver and Motorcycle Rider Casualties by Age, Sex, BAC Serious Injury**

Age	Sex	Blood Alcohol Concentration						Not Tested/ Unknown	ALL CAUSALITIES
		Negative	0.001-0.049	0.050-0.079	0.080-0.149	0.150-0.199	.200+		
0-15	M	0	0	0	1	0	0	1	2
	F	0	0	0	0	0	0	0	0
	<b>Subtotal<sup>1</sup></b>	<b>0</b>	<b>0</b>	<b>0</b>	<b>1</b>	<b>0</b>	<b>0</b>	<b>1</b>	<b>2</b>
16-19	M	12	0	1	1	2	0	11	27
	F	8	0	0	0	0	0	7	15
	<b>Subtotal<sup>1</sup></b>	<b>20</b>	<b>0</b>	<b>1</b>	<b>1</b>	<b>2</b>	<b>0</b>	<b>18</b>	<b>42</b>
20-24	M	18	1	2	2	2	0	14	39
	F	13	0	0	3	0	0	10	26
	<b>Subtotal<sup>1</sup></b>	<b>31</b>	<b>1</b>	<b>2</b>	<b>5</b>	<b>2</b>	<b>0</b>	<b>24</b>	<b>65</b>
25-29	M	14	0	0	7	2	1	19	43
	F	2	0	0	1	0	0	6	9
	<b>Subtotal<sup>1</sup></b>	<b>16</b>	<b>0</b>	<b>0</b>	<b>8</b>	<b>2</b>	<b>1</b>	<b>25</b>	<b>52</b>
30-39	M	27	1	1	2	4	0	22	57
	F	10	0	1	0	0	0	7	18
	<b>Subtotal<sup>1</sup></b>	<b>37</b>	<b>1</b>	<b>2</b>	<b>2</b>	<b>4</b>	<b>0</b>	<b>29</b>	<b>75</b>
40-49	M	25	0	0	3	6	2	22	58
	F	10	0	0	0	1	0	5	16
	<b>Subtotal<sup>1</sup></b>	<b>35</b>	<b>0</b>	<b>0</b>	<b>3</b>	<b>7</b>	<b>2</b>	<b>27</b>	<b>74</b>
50-59	M	20	0	0	1	0	1	16	38
	F	14	0	0	0	1	0	8	23
	<b>Subtotal<sup>1</sup></b>	<b>34</b>	<b>0</b>	<b>0</b>	<b>1</b>	<b>1</b>	<b>1</b>	<b>24</b>	<b>61</b>
60-69	M	20	0	1	0	0	0	6	27
	F	12	0	0	0	0	0	7	19
	<b>Subtotal<sup>1</sup></b>	<b>32</b>	<b>0</b>	<b>1</b>	<b>0</b>	<b>0</b>	<b>0</b>	<b>13</b>	<b>46</b>
70+	M	13	1	0	0	0	0	7	21
	F	12	0	0	0	0	0	11	23
	<b>Subtotal<sup>1</sup></b>	<b>25</b>	<b>1</b>	<b>0</b>	<b>0</b>	<b>0</b>	<b>0</b>	<b>18</b>	<b>44</b>
Unknown	M	0	0	0	0	0	0	1	1
	F	1	0	0	0	0	0	0	1
	<b>Subtotal<sup>1</sup></b>	<b>1</b>	<b>0</b>	<b>0</b>	<b>0</b>	<b>0</b>	<b>0</b>	<b>1</b>	<b>2</b>
ALL AGES	<b>M</b>	<b>149</b>	<b>3</b>	<b>5</b>	<b>17</b>	<b>16</b>	<b>4</b>	<b>119</b>	<b>313</b>
	<b>F</b>	<b>82</b>	<b>0</b>	<b>1</b>	<b>4</b>	<b>2</b>	<b>0</b>	<b>61</b>	<b>150</b>
	<b>TOTAL<sup>1</sup></b>	<b>231</b>	<b>3</b>	<b>6</b>	<b>21</b>	<b>18</b>	<b>4</b>	<b>180</b>	<b>463</b>

<sup>1</sup> Unknown sex included

**Table 33c: Driver and Motorcycle Rider Casualties by Age, Sex, BAC  
Minor Injury**

Age	Sex	Blood Alcohol Concentration						Not Tested/ Unknown	ALL CAUSALITIES
		Negative	0.001-0.049	0.050-0.079	0.080-0.149	0.150-0.199	.200+		
0-15	M	2	0	0	0	0	0	2	4
	F	0	0	0	0	0	0	0	0
	<b>Subtotal<sup>1</sup></b>	<b>2</b>	<b>0</b>	<b>0</b>	<b>0</b>	<b>0</b>	<b>0</b>	<b>2</b>	<b>4</b>
16-19	M	82	1	1	5	2	0	90	181
	F	92	1	0	3	0	1	120	217
	<b>Subtotal<sup>1</sup></b>	<b>174</b>	<b>2</b>	<b>1</b>	<b>8</b>	<b>2</b>	<b>1</b>	<b>210</b>	<b>398</b>
20-24	M	105	2	1	11	3	0	169	291
	F	110	0	1	1	1	0	215	328
	<b>Subtotal<sup>1</sup></b>	<b>215</b>	<b>2</b>	<b>2</b>	<b>12</b>	<b>4</b>	<b>0</b>	<b>384</b>	<b>619</b>
25-29	M	81	5	0	7	2	2	140	237
	F	98	0	0	0	2	2	184	286
	<b>Subtotal<sup>1</sup></b>	<b>179</b>	<b>5</b>	<b>0</b>	<b>7</b>	<b>4</b>	<b>4</b>	<b>324</b>	<b>523</b>
30-39	M	121	7	2	6	3	5	232	376
	F	145	2	0	3	4	5	332	491
	<b>Subtotal<sup>1</sup></b>	<b>266</b>	<b>9</b>	<b>2</b>	<b>9</b>	<b>7</b>	<b>10</b>	<b>564</b>	<b>867</b>
40-49	M	107	2	1	5	1	5	212	333
	F	106	0	0	1	2	2	312	423
	<b>Subtotal<sup>1</sup></b>	<b>213</b>	<b>2</b>	<b>1</b>	<b>6</b>	<b>3</b>	<b>7</b>	<b>524</b>	<b>756</b>
50-59	M	102	0	3	0	1	0	178	284
	F	89	0	0	1	1	0	204	295
	<b>Subtotal<sup>1</sup></b>	<b>191</b>	<b>0</b>	<b>3</b>	<b>1</b>	<b>2</b>	<b>0</b>	<b>382</b>	<b>579</b>
60-69	M	54	0	1	2	1	1	102	161
	F	62	0	0	0	0	1	104	167
	<b>Subtotal<sup>1</sup></b>	<b>116</b>	<b>0</b>	<b>1</b>	<b>2</b>	<b>1</b>	<b>2</b>	<b>206</b>	<b>328</b>
70+	M	79	0	0	0	0	0	99	178
	F	42	0	0	1	0	0	53	96
	<b>Subtotal<sup>1</sup></b>	<b>121</b>	<b>0</b>	<b>0</b>	<b>1</b>	<b>0</b>	<b>0</b>	<b>152</b>	<b>274</b>
Unknown	M	2	1	0	0	0	0	4	7
	F	3	0	0	0	0	0	10	13
	<b>Subtotal<sup>1</sup></b>	<b>5</b>	<b>1</b>	<b>0</b>	<b>0</b>	<b>0</b>	<b>0</b>	<b>14</b>	<b>20</b>
ALL AGES	M	735	18	9	36	13	13	1228	2052
	F	747	3	1	10	10	11	1534	2316
	<b>TOTAL<sup>1</sup></b>	<b>1482</b>	<b>21</b>	<b>10</b>	<b>46</b>	<b>23</b>	<b>24</b>	<b>2762</b>	<b>4368</b>

<sup>1</sup> Unknown sex included

**Table 34a: Road User Involved In & Responsible For Crashes by Age & Sex**  
**Fatal Crash**

Age	Sex	Drivers		Motorcycle Riders		Bicycle Riders		Pedestrians		Other Road Users		ALL ROAD USERS	
		Involved	Responsible	Involved	Responsible	Involved	Responsible	Involved	Responsible	Involved	Responsible	Involved	Responsible
0-15	M	0	0	0	0	0	0	1	1	0	0	1	1
	F	0	0	0	0	0	0	0	0	0	0	0	0
	<b>Subtotal<sup>1</sup></b>	<b>0</b>	<b>0</b>	<b>0</b>	<b>0</b>	<b>0</b>	<b>0</b>	<b>1</b>	<b>1</b>	<b>0</b>	<b>0</b>	<b>1</b>	<b>1</b>
16-19	M	7	7	0	0	0	0	0	0	0	0	7	7
	F	0	0	0	0	0	0	0	0	0	0	0	0
	<b>Subtotal<sup>1</sup></b>	<b>7</b>	<b>7</b>	<b>0</b>	<b>0</b>	<b>0</b>	<b>0</b>	<b>0</b>	<b>0</b>	<b>0</b>	<b>0</b>	<b>7</b>	<b>7</b>
20-24	M	6	3	3	3	0	0	1	1	0	0	10	7
	F	2	2	0	0	0	0	0	0	0	0	2	2
	<b>Subtotal<sup>1</sup></b>	<b>8</b>	<b>5</b>	<b>3</b>	<b>3</b>	<b>0</b>	<b>0</b>	<b>1</b>	<b>1</b>	<b>0</b>	<b>0</b>	<b>12</b>	<b>9</b>
25-29	M	6	5	1	1	0	0	0	0	0	0	7	6
	F	3	1	0	0	0	0	0	0	0	0	3	1
	<b>Subtotal<sup>1</sup></b>	<b>9</b>	<b>6</b>	<b>1</b>	<b>1</b>	<b>0</b>	<b>0</b>	<b>0</b>	<b>0</b>	<b>0</b>	<b>0</b>	<b>10</b>	<b>7</b>
30-39	M	15	8	1	1	0	0	0	0	0	0	16	9
	F	5	3	0	0	0	0	0	0	0	0	5	3
	<b>Subtotal<sup>1</sup></b>	<b>20</b>	<b>11</b>	<b>1</b>	<b>1</b>	<b>0</b>	<b>0</b>	<b>0</b>	<b>0</b>	<b>0</b>	<b>0</b>	<b>21</b>	<b>12</b>
40-49	M	19	9	5	3	0	0	2	2	1	0	27	14
	F	3	2	0	0	0	0	0	0	0	0	3	2
	<b>Subtotal<sup>1</sup></b>	<b>22</b>	<b>11</b>	<b>5</b>	<b>3</b>	<b>0</b>	<b>0</b>	<b>2</b>	<b>2</b>	<b>1</b>	<b>0</b>	<b>30</b>	<b>16</b>
50-59	M	12	4	4	3	1	1	0	0	0	0	17	8
	F	3	1	0	0	0	0	0	0	0	0	3	1
	<b>Subtotal<sup>1</sup></b>	<b>15</b>	<b>5</b>	<b>4</b>	<b>3</b>	<b>1</b>	<b>1</b>	<b>0</b>	<b>0</b>	<b>0</b>	<b>0</b>	<b>20</b>	<b>9</b>
60-69	M	11	4	2	1	2	0	0	0	0	0	15	5
	F	4	2	0	0	0	0	0	0	0	0	4	2
	<b>Subtotal<sup>1</sup></b>	<b>15</b>	<b>6</b>	<b>2</b>	<b>1</b>	<b>2</b>	<b>0</b>	<b>0</b>	<b>0</b>	<b>0</b>	<b>0</b>	<b>19</b>	<b>7</b>
70+	M	12	7	1	0	0	0	5	3	0	0	18	10
	F	6	5	0	0	0	0	1	1	0	0	7	6
	<b>Subtotal<sup>1</sup></b>	<b>18</b>	<b>12</b>	<b>1</b>	<b>0</b>	<b>0</b>	<b>0</b>	<b>6</b>	<b>4</b>	<b>0</b>	<b>0</b>	<b>25</b>	<b>16</b>
Unknown	M	0	0	0	0	0	0	0	0	0	0	0	0
	F	0	0	0	0	0	0	0	0	0	0	0	0
	<b>Subtotal<sup>1</sup></b>	<b>0</b>	<b>0</b>	<b>0</b>	<b>0</b>	<b>0</b>	<b>0</b>	<b>0</b>	<b>0</b>	<b>0</b>	<b>0</b>	<b>0</b>	<b>0</b>
ALL AGES	M	88	47	17	12	3	1	9	7	1	0	118	67
	F	26	16	0	0	0	0	1	1	0	0	27	17
	<b>TOTAL<sup>1</sup></b>	<b>114</b>	<b>63</b>	<b>17</b>	<b>12</b>	<b>3</b>	<b>1</b>	<b>10</b>	<b>8</b>	<b>1</b>	<b>0</b>	<b>145</b>	<b>84</b>

<sup>1</sup>Unknown sex included

**Table 34b: Road User Involved In & Responsible For Crashes by Age & Sex  
Serious Injury Crash**

Age	Sex	Drivers		Motorcycle Riders		Bicycle Riders		Pedestrians		Other Road Users		ALL ROAD USERS	
		Involved	Responsible	Involved	Responsible	Involved	Responsible	Involved	Responsible	Involved	Responsible	Involved	Responsible
0-15	M	1	1	1	1	4	0	2	2	0	0	8	4
	F	0	0	0	0	1	1	6	6	0	0	7	7
	<b>Subtotal<sup>1</sup></b>	<b>1</b>	<b>1</b>	<b>1</b>	<b>1</b>	<b>5</b>	<b>1</b>	<b>8</b>	<b>8</b>	<b>0</b>	<b>0</b>	<b>15</b>	<b>11</b>
16-19	M	37	32	7	3	7	5	3	3	0	0	54	43
	F	28	17	0	0	0	0	3	1	0	0	31	18
	<b>Subtotal<sup>1</sup></b>	<b>66</b>	<b>50</b>	<b>7</b>	<b>3</b>	<b>7</b>	<b>5</b>	<b>6</b>	<b>4</b>	<b>0</b>	<b>0</b>	<b>86</b>	<b>62</b>
20-24	M	60	42	10	8	4	1	7	4	0	0	81	55
	F	37	24	1	1	2	1	7	5	0	0	47	31
	<b>Subtotal<sup>1</sup></b>	<b>97</b>	<b>66</b>	<b>11</b>	<b>9</b>	<b>6</b>	<b>2</b>	<b>14</b>	<b>9</b>	<b>0</b>	<b>0</b>	<b>128</b>	<b>86</b>
25-29	M	56	45	15	11	1	0	2	2	0	0	74	58
	F	19	13	1	1	0	0	1	1	0	0	21	15
	<b>Subtotal<sup>1</sup></b>	<b>75</b>	<b>58</b>	<b>16</b>	<b>12</b>	<b>1</b>	<b>0</b>	<b>3</b>	<b>3</b>	<b>0</b>	<b>0</b>	<b>95</b>	<b>73</b>
30-39	M	81	43	28	16	15	3	6	4	0	0	130	66
	F	37	24	0	0	2	2	1	1	0	0	40	27
	<b>Subtotal<sup>1</sup></b>	<b>118</b>	<b>67</b>	<b>28</b>	<b>16</b>	<b>17</b>	<b>5</b>	<b>7</b>	<b>5</b>	<b>0</b>	<b>0</b>	<b>170</b>	<b>93</b>
40-49	M	63	36	24	13	16	7	7	5	0	0	110	61
	F	37	17	4	4	2	0	2	2	0	0	45	23
	<b>Subtotal<sup>1</sup></b>	<b>100</b>	<b>53</b>	<b>28</b>	<b>17</b>	<b>18</b>	<b>7</b>	<b>9</b>	<b>7</b>	<b>0</b>	<b>0</b>	<b>155</b>	<b>84</b>
50-59	M	62	36	15	9	12	7	5	1	0	0	94	53
	F	37	20	1	1	2	1	4	3	0	0	44	25
	<b>Subtotal<sup>1</sup></b>	<b>99</b>	<b>56</b>	<b>16</b>	<b>10</b>	<b>14</b>	<b>8</b>	<b>9</b>	<b>4</b>	<b>0</b>	<b>0</b>	<b>138</b>	<b>78</b>
60-69	M	46	26	10	6	8	4	5	1	0	0	69	37
	F	27	11	0	0	1	1	2	1	0	0	30	13
	<b>Subtotal<sup>1</sup></b>	<b>73</b>	<b>37</b>	<b>10</b>	<b>6</b>	<b>9</b>	<b>5</b>	<b>7</b>	<b>2</b>	<b>0</b>	<b>0</b>	<b>99</b>	<b>50</b>
70+	M	37	25	2	1	5	2	7	5	0	0	51	33
	F	28	22	0	0	0	0	3	1	0	0	31	23
	<b>Subtotal<sup>1</sup></b>	<b>65</b>	<b>47</b>	<b>2</b>	<b>1</b>	<b>5</b>	<b>2</b>	<b>10</b>	<b>6</b>	<b>0</b>	<b>0</b>	<b>82</b>	<b>56</b>
Unknown	M	9	7	1	1	1	0	3	1	0	0	14	9
	F	3	1	0	0	1	0	2	1	0	0	6	2
	<b>Subtotal<sup>1</sup></b>	<b>28</b>	<b>21</b>	<b>1</b>	<b>1</b>	<b>2</b>	<b>0</b>	<b>5</b>	<b>2</b>	<b>0</b>	<b>0</b>	<b>36</b>	<b>24</b>
ALL AGES	M	452	293	113	69	73	29	47	28	0	0	685	419
	F	253	149	7	7	11	6	31	22	0	0	302	184
	<b>TOTAL<sup>1</sup></b>	<b>722</b>	<b>456</b>	<b>120</b>	<b>76</b>	<b>84</b>	<b>35</b>	<b>78</b>	<b>50</b>	<b>0</b>	<b>0</b>	<b>1004</b>	<b>617</b>

<sup>1</sup> Unknown sex included



**Table 34c: Road User Involved In & Responsible For Crashes by Age & Sex  
Minor Injury Crash**

Age	Sex	Drivers		Motorcycle Riders		Bicycle Riders		Pedestrians		Other Road Users		ALL ROAD USERS	
		Involved	Responsible	Involved	Responsible	Involved	Responsible	Involved	Responsible	Involved	Responsible	Involved	Responsible
0-15	M	1	1	3	3	20	14	19	12	6	4	49	34
	F	0	0	0	0	3	1	12	7	1	1	16	9
	<b>Subtotal<sup>1</sup></b>	<b>1</b>	<b>1</b>	<b>3</b>	<b>3</b>	<b>23</b>	<b>15</b>	<b>31</b>	<b>19</b>	<b>7</b>	<b>5</b>	<b>65</b>	<b>43</b>
16-19	M	384	280	37	23	25	9	13	6	1	0	460	318
	F	389	251	1	1	6	2	9	4	0	0	405	258
	<b>Subtotal<sup>1</sup></b>	<b>773</b>	<b>531</b>	<b>38</b>	<b>24</b>	<b>31</b>	<b>11</b>	<b>22</b>	<b>10</b>	<b>1</b>	<b>0</b>	<b>865</b>	<b>576</b>
20-24	M	658	390	57	34	38	8	22	13	0	0	775	445
	F	589	308	1	0	14	1	13	9	0	0	617	318
	<b>Subtotal<sup>1</sup></b>	<b>1247</b>	<b>698</b>	<b>58</b>	<b>34</b>	<b>52</b>	<b>9</b>	<b>35</b>	<b>22</b>	<b>0</b>	<b>0</b>	<b>1392</b>	<b>763</b>
25-29	M	611	342	40	26	42	10	7	4	0	0	700	382
	F	494	245	9	6	15	4	8	7	0	0	526	262
	<b>Subtotal<sup>1</sup></b>	<b>1105</b>	<b>587</b>	<b>49</b>	<b>32</b>	<b>57</b>	<b>14</b>	<b>15</b>	<b>11</b>	<b>0</b>	<b>0</b>	<b>1226</b>	<b>644</b>
30-39	M	911	466	55	30	84	14	13	7	1	1	1064	518
	F	824	341	7	2	21	0	18	8	0	0	870	351
	<b>Subtotal<sup>1</sup></b>	<b>1735</b>	<b>807</b>	<b>62</b>	<b>32</b>	<b>105</b>	<b>14</b>	<b>31</b>	<b>15</b>	<b>1</b>	<b>1</b>	<b>1934</b>	<b>869</b>
40-49	M	842	419	54	24	94	20	18	9	0	0	1008	472
	F	751	297	6	3	22	1	16	6	0	0	795	307
	<b>Subtotal<sup>1</sup></b>	<b>1594</b>	<b>717</b>	<b>60</b>	<b>27</b>	<b>116</b>	<b>21</b>	<b>34</b>	<b>15</b>	<b>0</b>	<b>0</b>	<b>1804</b>	<b>780</b>
50-59	M	635	289	50	25	59	16	17	6	0	0	761	336
	F	503	196	6	2	15	2	12	3	1	0	537	203
	<b>Subtotal<sup>1</sup></b>	<b>1138</b>	<b>485</b>	<b>56</b>	<b>27</b>	<b>74</b>	<b>18</b>	<b>29</b>	<b>9</b>	<b>1</b>	<b>0</b>	<b>1298</b>	<b>539</b>
60-69	M	422	198	13	6	29	8	15	3	0	0	479	215
	F	289	136	1	0	3	1	18	5	0	0	311	142
	<b>Subtotal<sup>1</sup></b>	<b>711</b>	<b>334</b>	<b>14</b>	<b>6</b>	<b>32</b>	<b>9</b>	<b>33</b>	<b>8</b>	<b>0</b>	<b>0</b>	<b>790</b>	<b>357</b>
70+	M	390	258	8	2	13	3	23	9	0	0	434	272
	F	182	123	0	0	2	0	20	7	0	0	204	130
	<b>Subtotal<sup>1</sup></b>	<b>573</b>	<b>382</b>	<b>8</b>	<b>2</b>	<b>15</b>	<b>3</b>	<b>43</b>	<b>16</b>	<b>0</b>	<b>0</b>	<b>639</b>	<b>403</b>
Unknown	M	177	134	5	4	13	7	13	5	0	0	208	150
	F	104	70	1	0	7	1	9	3	0	0	121	74
	<b>Subtotal<sup>1</sup></b>	<b>376</b>	<b>265</b>	<b>6</b>	<b>4</b>	<b>21</b>	<b>9</b>	<b>23</b>	<b>8</b>	<b>0</b>	<b>0</b>	<b>426</b>	<b>286</b>
ALL AGES	M	5031	2777	322	177	417	109	160	74	8	5	5938	3142
	F	4125	1967	32	14	108	13	135	59	2	1	4402	2054
	<b>TOTAL<sup>1</sup></b>	<b>9253</b>	<b>4807</b>	<b>354</b>	<b>191</b>	<b>526</b>	<b>123</b>	<b>296</b>	<b>133</b>	<b>10</b>	<b>6</b>	<b>10439</b>	<b>5260</b>

<sup>1</sup>Unknown sex included

**Table 34d: Road User Involved In & Responsible For Crashes by Age & Sex  
Property Damage Crash**

Age	Sex	Drivers		Motorcycle Riders		Bicycle Riders		Pedestrians		Other Road Users		ALL ROAD USERS	
		Involved	Responsible	Involved	Responsible	Involved	Responsible	Involved	Responsible	Involved	Responsible	Involved	Responsible
0-15	M	6	6	0	0	4	3	1	1	0	0	11	10
	F	3	2	0	0	0	0	0	0	0	0	3	2
	<b>Subtotal<sup>1</sup></b>	<b>9</b>	<b>8</b>	<b>0</b>	<b>0</b>	<b>4</b>	<b>3</b>	<b>1</b>	<b>1</b>	<b>0</b>	<b>0</b>	<b>14</b>	<b>12</b>
16-19	M	1376	938	14	8	1	0	2	2	0	0	1393	948
	F	970	569	0	0	0	0	0	0	0	0	970	569
	<b>Subtotal<sup>1</sup></b>	<b>2347</b>	<b>1508</b>	<b>14</b>	<b>8</b>	<b>1</b>	<b>0</b>	<b>2</b>	<b>2</b>	<b>0</b>	<b>0</b>	<b>2364</b>	<b>1518</b>
20-24	M	2177	1285	26	11	6	0	0	0	0	0	2209	1296
	F	1504	855	2	1	3	1	0	0	0	0	1509	857
	<b>Subtotal<sup>1</sup></b>	<b>3681</b>	<b>2140</b>	<b>28</b>	<b>12</b>	<b>9</b>	<b>1</b>	<b>0</b>	<b>0</b>	<b>0</b>	<b>0</b>	<b>3718</b>	<b>2153</b>
25-29	M	1957	1041	21	8	8	1	0	0	0	0	1986	1050
	F	1247	622	2	1	0	0	0	0	0	0	1249	623
	<b>Subtotal<sup>1</sup></b>	<b>3208</b>	<b>1665</b>	<b>23</b>	<b>9</b>	<b>8</b>	<b>1</b>	<b>0</b>	<b>0</b>	<b>0</b>	<b>0</b>	<b>3239</b>	<b>1675</b>
30-39	M	3044	1495	34	18	21	1	1	0	0	0	3100	1514
	F	2032	977	5	3	1	0	1	0	0	0	2039	980
	<b>Subtotal<sup>1</sup></b>	<b>5077</b>	<b>2473</b>	<b>39</b>	<b>21</b>	<b>22</b>	<b>1</b>	<b>2</b>	<b>0</b>	<b>0</b>	<b>0</b>	<b>5140</b>	<b>2495</b>
40-49	M	2882	1349	36	18	21	2	1	0	0	0	2940	1369
	F	2084	842	4	1	1	0	0	0	0	0	2089	843
	<b>Subtotal<sup>1</sup></b>	<b>4967</b>	<b>2192</b>	<b>40</b>	<b>19</b>	<b>22</b>	<b>2</b>	<b>1</b>	<b>0</b>	<b>0</b>	<b>0</b>	<b>5030</b>	<b>2213</b>
50-59	M	2250	1015	36	15	10	2	1	1	2	1	2299	1034
	F	1558	644	1	0	0	0	0	0	0	0	1559	644
	<b>Subtotal<sup>1</sup></b>	<b>3808</b>	<b>1659</b>	<b>37</b>	<b>15</b>	<b>10</b>	<b>2</b>	<b>1</b>	<b>1</b>	<b>2</b>	<b>1</b>	<b>3858</b>	<b>1678</b>
60-69	M	1523	674	6	4	3	0	0	0	0	0	1532	678
	F	930	441	0	0	0	0	0	0	0	0	930	441
	<b>Subtotal<sup>1</sup></b>	<b>2453</b>	<b>1115</b>	<b>6</b>	<b>4</b>	<b>3</b>	<b>0</b>	<b>0</b>	<b>0</b>	<b>0</b>	<b>0</b>	<b>2462</b>	<b>1119</b>
70+	M	1097	699	1	1	1	0	2	1	0	0	1101	701
	F	638	394	0	0	0	0	0	0	0	0	638	394
	<b>Subtotal<sup>1</sup></b>	<b>1735</b>	<b>1093</b>	<b>1</b>	<b>1</b>	<b>1</b>	<b>0</b>	<b>2</b>	<b>1</b>	<b>0</b>	<b>0</b>	<b>1739</b>	<b>1095</b>
Unknown	M	1092	758	17	12	20	12	1	1	0	0	1130	783
	F	469	335	2	1	2	0	0	0	0	0	473	336
	<b>Subtotal<sup>1</sup></b>	<b>2373</b>	<b>1808</b>	<b>25</b>	<b>18</b>	<b>25</b>	<b>13</b>	<b>1</b>	<b>1</b>	<b>1</b>	<b>0</b>	<b>2425</b>	<b>1840</b>
ALL AGES	M	17404	9260	191	95	95	21	9	6	2	1	17701	9383
	F	11435	5681	16	7	7	1	1	0	0	0	11459	5689
	<b>TOTAL<sup>1</sup></b>	<b>29658</b>	<b>15661</b>	<b>213</b>	<b>107</b>	<b>105</b>	<b>23</b>	<b>10</b>	<b>6</b>	<b>3</b>	<b>1</b>	<b>29989</b>	<b>15798</b>

<sup>1</sup>Unknown sex included

**Table 34e: Road User Involved In & Responsible For Crashes by Age & Sex**  
**All crashes**

Age	Sex	Drivers		Motorcycle Riders		Bicycle Riders		Pedestrians		Other Road Users		ALL ROAD USERS	
		Involved	Responsible	Involved	Responsible	Involved	Responsible	Involved	Responsible	Involved	Responsible	Involved	Responsible
0-15	M	8	8	4	4	28	17	23	16	6	4	69	49
	F	3	2	0	0	4	2	18	13	1	1	26	18
	<b>Subtotal<sup>1</sup></b>	<b>11</b>	<b>10</b>	<b>4</b>	<b>4</b>	<b>32</b>	<b>19</b>	<b>41</b>	<b>29</b>	<b>7</b>	<b>5</b>	<b>95</b>	<b>67</b>
16-19	M	1804	1257	58	34	33	14	18	11	1	0	1914	1316
	F	1387	837	1	1	6	2	12	5	0	0	1406	845
	<b>Subtotal<sup>1</sup></b>	<b>3193</b>	<b>2096</b>	<b>59</b>	<b>35</b>	<b>39</b>	<b>16</b>	<b>30</b>	<b>16</b>	<b>1</b>	<b>0</b>	<b>3322</b>	<b>2163</b>
20-24	M	2901	1720	96	56	48	9	30	18	0	0	3075	1803
	F	2132	1189	4	2	19	3	20	14	0	0	2175	1208
	<b>Subtotal<sup>1</sup></b>	<b>5033</b>	<b>2909</b>	<b>100</b>	<b>58</b>	<b>67</b>	<b>12</b>	<b>50</b>	<b>32</b>	<b>0</b>	<b>0</b>	<b>5250</b>	<b>3011</b>
25-29	M	2630	1433	77	46	51	11	9	6	0	0	2767	1496
	F	1763	881	12	8	15	4	9	8	0	0	1799	901
	<b>Subtotal<sup>1</sup></b>	<b>4397</b>	<b>2316</b>	<b>89</b>	<b>54</b>	<b>66</b>	<b>15</b>	<b>18</b>	<b>14</b>	<b>0</b>	<b>0</b>	<b>4570</b>	<b>2399</b>
30-39	M	4051	2012	118	65	120	18	20	11	1	1	4310	2107
	F	2898	1345	12	5	24	2	20	9	0	0	2954	1361
	<b>Subtotal<sup>1</sup></b>	<b>6950</b>	<b>3358</b>	<b>130</b>	<b>70</b>	<b>144</b>	<b>20</b>	<b>40</b>	<b>20</b>	<b>1</b>	<b>1</b>	<b>7265</b>	<b>3469</b>
40-49	M	3806	1813	119	58	131	29	28	16	1	0	4085	1916
	F	2875	1158	14	8	25	1	18	8	0	0	2932	1175
	<b>Subtotal<sup>1</sup></b>	<b>6683</b>	<b>2973</b>	<b>133</b>	<b>66</b>	<b>156</b>	<b>30</b>	<b>46</b>	<b>24</b>	<b>1</b>	<b>0</b>	<b>7019</b>	<b>3093</b>
50-59	M	2959	1344	105	52	82	26	23	8	2	1	3171	1431
	F	2101	861	8	3	17	3	16	6	1	0	2143	873
	<b>Subtotal<sup>1</sup></b>	<b>5060</b>	<b>2205</b>	<b>113</b>	<b>55</b>	<b>99</b>	<b>29</b>	<b>39</b>	<b>14</b>	<b>3</b>	<b>1</b>	<b>5314</b>	<b>2304</b>
60-69	M	2002	902	31	17	42	12	20	4	0	0	2095	935
	F	1250	590	1	0	4	2	20	6	0	0	1275	598
	<b>Subtotal<sup>1</sup></b>	<b>3252</b>	<b>1492</b>	<b>32</b>	<b>17</b>	<b>46</b>	<b>14</b>	<b>40</b>	<b>10</b>	<b>0</b>	<b>0</b>	<b>3370</b>	<b>1533</b>
70+	M	1536	989	12	4	19	5	37	18	0	0	1604	1016
	F	854	544	0	0	2	0	24	9	0	0	880	553
	<b>Subtotal<sup>1</sup></b>	<b>2391</b>	<b>1534</b>	<b>12</b>	<b>4</b>	<b>21</b>	<b>5</b>	<b>61</b>	<b>27</b>	<b>0</b>	<b>0</b>	<b>2485</b>	<b>1570</b>
Unknown	M	1278	899	23	17	34	19	17	7	0	0	1352	942
	F	576	406	3	1	10	1	11	4	0	0	600	412
	<b>Subtotal<sup>1</sup></b>	<b>2777</b>	<b>2094</b>	<b>32</b>	<b>23</b>	<b>48</b>	<b>22</b>	<b>29</b>	<b>11</b>	<b>1</b>	<b>0</b>	<b>2887</b>	<b>2150</b>
ALL AGES	M	22975	12377	643	353	588	160	225	115	11	6	24442	13011
	F	15839	7813	55	28	126	20	168	82	2	1	16190	7944
	<b>TOTAL<sup>1</sup></b>	<b>39747</b>	<b>20987</b>	<b>704</b>	<b>386</b>	<b>718</b>	<b>182</b>	<b>394</b>	<b>197</b>	<b>14</b>	<b>7</b>	<b>41577</b>	<b>21759</b>

<sup>1</sup>Unknown sex included

**Table 35: Drivers & Motorcycle Riders Involved in & Responsible for Crashes by Licence Type & Severity**

Licence Type	Fatal Crashes		Serious Injury Crashes		Minor Injury Crashes		Property Damage Crashes		ALL CRASHES	
	Involved	Responsible	Involved	Responsible	Involved	Responsible	Involved	Responsible	Involved	Responsible
Learners Permit	0	0	8	6	95	63	227	145	330	214
Probationary Licence	1	0	3	2	49	23	139	84	192	109
Full Licence	108	56	578	339	7354	3493	22059	10465	30099	14353
Unlicensed	8	8	31	24	139	111	398	311	576	454
Conditional Licence	0	0	0	0	3	3	13	7	16	10
Provisional 1 Licence	7	6	97	73	995	666	2727	1790	3826	2535
Provisional 2 Licence	3	3	25	16	262	156	871	498	1161	673
Disqualified Licence	3	2	7	7	11	9	35	32	56	50
Unknown	1	0	93	65	699	474	3402	2436	4195	2975
<b>Total</b>	<b>131</b>	<b>75</b>	<b>842</b>	<b>532</b>	<b>9607</b>	<b>4998</b>	<b>29871</b>	<b>15768</b>	<b>40451</b>	<b>21373</b>

**Table 36a: Drivers & Motorcycle Riders Responsible for Crashes by Licence Type and Age  
Fatal Crash**

	Learners Permit	Probationary Licence	Full Licence	Unlicensed	Conditional Licence	P1 Licence	P2 Licence	Disqualified	Unknown	Total
0-15	0	0	0	0	0	0	0	0	0	0
16-19	0	0	0	1	0	4	2	0	0	7
20-24	0	0	4	1	0	2	1	0	0	8
25-29	0	0	6	1	0	0	0	0	0	7
30-39	0	0	8	3	0	0	0	1	0	12
40-49	0	0	11	2	0	0	0	1	0	14
50-59	0	0	8	0	0	0	0	0	0	8
60-69	0	0	7	0	0	0	0	0	0	7
70+	0	0	12	0	0	0	0	0	0	12
unknown	0	0	0	0	0	0	0	0	0	0
<b>Total</b>	<b>0</b>	<b>0</b>	<b>56</b>	<b>8</b>	<b>0</b>	<b>6</b>	<b>3</b>	<b>2</b>	<b>0</b>	<b>75</b>

**Table 36b: Drivers & Motorcycle Riders Responsible for Crashes by Licence Type and Age  
Serious Injury Crash**

	Learners Permit	Probationary Licence	Full Licence	Unlicensed	Conditional Licence	P1 Licence	P2 Licence	Disqualified	Unknown	Total
0-15	0	0	0	2	0	0	0	0	0	2
16-19	0	0	4	1	0	35	9	0	4	53
20-24	2	0	35	4	0	22	2	2	8	75
25-29	1	1	37	5	0	10	4	3	9	70
30-39	0	1	61	5	0	4	1	2	9	83
40-49	3	0	57	4	0	2	0	0	4	70
50-59	0	0	60	3	0	0	0	0	3	66
60-69	0	0	40	0	0	0	0	0	3	43
70+	0	0	45	0	0	0	0	0	3	48
unknown	0	0	0	0	0	0	0	0	22	22
<b>Total</b>	<b>6</b>	<b>2</b>	<b>339</b>	<b>24</b>	<b>0</b>	<b>73</b>	<b>16</b>	<b>7</b>	<b>65</b>	<b>532</b>

**Table 36c: Drivers & Motorcycle Riders Responsible for Crashes by Licence Type and Age  
Minor Injury Crash**

	Learners Permit	Probationary Licence	Full Licence	Unlicensed	Conditional Licence	P1 Licence	P2 Licence	Disqualified	Unknown	Total
0-15	0	0	0	4	0	0	0	0	0	4
16-19	29	0	40	8	0	353	108	1	16	555
20-24	17	3	419	23	1	195	27	1	46	732
25-29	9	5	465	17	0	65	10	3	45	619
30-39	4	7	712	37	0	34	5	3	37	839
40-49	3	4	681	12	0	14	4	0	26	744
50-59	1	2	474	5	2	5	2	1	20	512
60-69	0	2	328	1	0	0	0	0	9	340
70+	0	0	371	2	0	0	0	0	11	384
unknown	0	0	3	2	0	0	0	0	264	269
<b>Total</b>	<b>63</b>	<b>23</b>	<b>3493</b>	<b>111</b>	<b>3</b>	<b>666</b>	<b>156</b>	<b>9</b>	<b>474</b>	<b>4998</b>

**Table 36d: Drivers & Motorcycle Riders Responsible for Crashes by Licence Type and Age  
Property Damage Crash**

	Learners Permit	Probationary Licence	Full Licence	Unlicensed	Conditional Licence	P1 Licence	P2 Licence	Disqualified	Unknown	Total
0-15	0	0	0	7	0	0	1	0	0	8
16-19	69	1	136	27	1	941	301	3	37	1516
20-24	35	9	1224	72	0	545	129	6	132	2152
25-29	16	17	1214	61	1	176	34	10	145	1674
30-39	13	25	2156	63	2	86	23	8	118	2494
40-49	9	15	1992	55	1	34	8	5	92	2211
50-59	1	11	1604	15	0	6	1	0	36	1674
60-69	0	5	1071	3	0	2	0	0	38	1119
70+	0	1	1063	5	2	0	0	0	23	1094
unknown	2	0	5	3	0	0	1	0	1815	1826
<b>Total</b>	<b>145</b>	<b>84</b>	<b>10465</b>	<b>311</b>	<b>7</b>	<b>1790</b>	<b>498</b>	<b>32</b>	<b>2436</b>	<b>15768</b>

**Table 36e: Drivers & Motorcycle Riders Responsible for Crashes by Licence Type and Age  
All crashes**

	Learners Permit	Probationary Licence	Full Licence	Unlicensed	Conditional Licence	P1 Licence	P2 Licence	Disqualified	Unknown	Total
0-15	0	0	0	13	0	0	1	0	0	14
16-19	98	1	180	37	1	1333	420	4	57	2131
20-24	54	12	1682	100	1	764	159	9	186	2967
25-29	26	23	1722	84	1	251	48	16	199	2370
30-39	17	33	2937	108	2	124	29	14	164	3428
40-49	15	19	2741	73	1	50	12	6	122	3039
50-59	2	13	2146	23	2	11	3	1	59	2260
60-69	0	7	1446	4	0	2	0	0	50	1509
70+	0	1	1491	7	2	0	0	0	37	1538
unknown	2	0	8	5	0	0	1	0	2101	2117
<b>Total</b>	<b>214</b>	<b>109</b>	<b>14353</b>	<b>454</b>	<b>10</b>	<b>2535</b>	<b>673</b>	<b>50</b>	<b>2975</b>	<b>21373</b>

## Reference Information

---

Population

Licence

Vehicle Information

**Table 37: Estimated Population<sup>1</sup> by Age and Sex**

Age Group	Sex		ALL PERSONS
	Male	Female	
0-15	159 503	15 2621	312 124
16-19	43 527	41 446	84 973
20-24	59 012	55 977	114 989
25-29	58 238	55 914	114 152
30-39	52 543	51 714	104 257
40-49	114 883	115 125	230 008
50-59	108 865	112 031	220 896
60-69	88 399	92 780	181 179
70+	81 678	106 255	187 933
<b>TOTAL</b>	<b>818 896</b>	<b>835 882</b>	<b>1 654 778</b>

**Table 38: Licence and Permit Holders<sup>2</sup> by Age and Sex**

Age Group	Sex			ALL PERSONS
	Male	Female	Unknown	
16-19	33 645	31 889	20	65 554
20-24	46 873	44 671	177	91 721
25-29	49 942	47 536	265	97 743
30-39	48 166	46 127	289	94 582
40-49	110 053	106 366	601	217 020
50-59	105 571	101 726	489	207 786
60-69	85 726	79 185	284	165 195
70+	64 533	52 196	97	116 826
<b>TOTAL</b>	<b>594 276</b>	<b>557 545</b>	<b>2757</b>	<b>1 154 578</b>

<sup>1</sup> Population as of 30 June. Source: Australian Bureau of Statistics, *Australian Demographic Statistics*, cat.no. 3101.0

<sup>2</sup> At 30 June. Source: TRUMPS database, Registration & Licensing Section, DPTI



**Table 39: Motor Vehicle on Register<sup>1</sup> by Vehicle Type**

Type of Vehicle	ALL VEHICLES
Cars & Station Wagons	990,330
Utilities	133,104
Panel Vans	35,708
Rigid & Other Trucks	43,048
Articulated Trucks	7,796
Other Commercials <sup>2</sup>	12,880
Buses	4,222
Motorcycles	42,803
Other <sup>3</sup>	15,446
<b>TOTAL</b>	<b>1,285,337</b>

**Table 40: Vehicle Kilometres Travelled<sup>4</sup> (VKT) by Vehicle Type**

Type of Vehicle	TOTAL VKT ('000 000)
Passenger Vehicle	12203
Light Commercials	2564
Rigid Trucks	595
Articulated Trucks	630
Non-freight Carrying Trucks	13
Motorcycles	163
Buses	145
<b>TOTAL</b>	<b>16313</b>

<sup>1</sup> At 30 June. Excludes tractors, trailers, caravans, plant and equipment. Source: TRUMPS database, Registration & Licensing Section, DPTI

<sup>2</sup> Includes animal transporter vehicle, drilling rig vehicle, earth moving vehicle, garbage truck, industrial vehicle, mobile crane vehicle, tanker vehicle

<sup>3</sup> Includes ambulance, armoured vehicle, fork lift, land implement vehicle, quad cycle, tricycle, golf buggy

<sup>4</sup> Travel for the year ended 30 June 2012. Source: Australian Bureau of Statistics, *Survey of Motor Vehicle Use*, cat. no. 9208.0

