

ROAD CRASHES in South Australia

Statistical Summary of Road Crashes
& Casualties in 2020



**ROAD
SAFETY**



Government
of South Australia

Prepared by Department for Infrastructure and Transport

Only available in electronic format from the Department for Infrastructure and Transport Road Safety website:
<http://dpti.sa.gov.au/towardszerotogether>

Further Information

For further information concerning road crash statistics for South Australia, write to the

Department for Infrastructure and Transport
GPO Box 1533
ADELAIDE SA 5000
Email: DT.CommunityRelations@sa.gov.au

Full Title: Road Crashes in South Australia: Statistical Summary of Road Crashes & Casualties in 2020

Type of Report and Period Covered: Statistical, 2020

Pages: 63

ISSN 2653-1224

Key Words: crash, crash rate, casualty, serious injury, injuries, age, blood alcohol concentration, day, hour, fatality, month, road user, severity, sex, vehicle movement, year, statistical

The data presented in this report is for information purposes only and should be used with care before drawing conclusions not contained in this report. Numbers may not match with future publications due to the database continually being updated with new information.

© Department for Infrastructure and Transport, the Government of South Australia, 2021. This work is licensed under the Creative Commons Attribution 4.0 Licence which allows re-users to copy and distribute the work in any medium or format in unadapted form only, and only so long as attribution is given to the Department for Infrastructure and Transport, the Government of South Australia. The license allows for commercial use. All other rights are reserved.

Re-users of this work are required to attribute the work as follows: Department for Infrastructure and Transport, the Government of South Australia, >>Road Crashes in South Australia: Statistical Summary of Road Crashes & Casualties in 2020<<, Sourced on >>insert date the content was sourced<<,>>dpti.sa.gov.au/towardszerotogether<<

Contents

KEY POINTS 2020	3
SUMMARY DATA FOR 2020	4
PREFACE	5
How crashes are processed?	5
Scope	5
Related Publications	5
Acknowledgements	5
Definitions & Explanatory Notes	6
CRASH AND CASUALTY TRENDS	
Table 1 Trends in South Australia, 1995 - 2020	9
Figure 1 Data Trends in South Australia, 1995 - 2020	10
Figure 2 Fatality Rate in South Australia, 1995 - 2020	10
Table 2 Comparison with other Australian Jurisdictions, 2020	11
Table 3a Road Crash Fatalities by Age Group compared with Deaths Registered in South Australia, 2019	11
Table 3b Age of Passenger Vehicles Involved in Serious Casualty Crashes, 2016 - 2020	11
Table 4 Casualties by Road User Type and Severity, 1995 - 2020	12
Table 5 Casualties by Age Group and Severity, 1995 - 2020	13
Table 6 Casualties by Sex and Severity, 1995 - 2020	14
Table 7 Crashes and Casualties by Region and Severity, 1995 - 2020	15
ROAD CRASHES in 2020	16
Time Distribution of Crashes	
Table 8 Crashes and Casualties during Holiday Periods by Severity	17
Table 9a Casualty Crashes by Time of Day, Day of Week	18
Figure 3 Casualty Crashes by Time of Day, Day of Week	18
Table 9b Casualties by Time of Day, Day of Week	19
Table 9c All Crashes by Time of Day, Day of Week	19
Table 10 Crashes and Casualties by Month of Year and Severity	19
Crash Type	
Table 11a Crashes and Casualties by Crash Type and Severity: <i>Metropolitan Adelaide</i>	20
Table 11b Crashes and Casualties by Crash Type and Severity: <i>Rural</i>	20
Table 11c Crashes and Casualties by Crash Type and Severity: <i>South Australia</i>	21
Table 12 Hit Fixed Object Crashes by Object First Hit and Severity	21
Table 13 Single Vehicle Crashes by Motor Vehicle Type and Severity	21
Figure 4 Definition for Coding Accidents Table	22
Table 14a Crashes and Casualties by Crash Type Code and Severity: <i>Metropolitan Adelaide</i>	23
Table 14b Crashes and Casualties by Crash Type Code and Severity: <i>Rural</i>	25
Table 14c Crashes and Casualties by Crash Type Code and Severity: <i>South Australia</i>	27
Location & Distribution of Crashes	
Table 15a Crashes and Casualties by Location Type and Severity: <i>Metropolitan Adelaide</i>	29
Table 15b Crashes and Casualties by Location Type and Severity: <i>Rural</i>	29
Table 15c Crashes and Casualties by Location Type and Severity: <i>South Australia</i>	30
Table 16a Crashes and Casualties by Traffic Control and Severity: <i>Metropolitan Adelaide</i>	30
Table 16b Crashes and Casualties by Traffic Control and Severity: <i>Rural</i>	31
Table 16c Crashes and Casualties by Traffic Control and Severity: <i>South Australia</i>	31
Table 17 Crashes and Casualties by Area Speed Limit, Region & Severity	32
Table 18 Crashes and Casualties by Light Conditions, Region & Severity	32
Table 19 Crashes and Casualties by Vertical Alignment, Region & Severity	33
Table 20 Crashes and Casualties by Horizontal Alignment, Region & Severity	33
Table 21 Crashes and Casualties by Road Moisture, Region & Severity	34
Table 22 Crashes and Casualties by Route and Severity	34
Table 23a Crashes and Casualties by Local Government Area and Severity: <i>Metropolitan Adelaide: Council Roads</i>	35
Table 23b Crashes and Casualties by Local Government Area and Severity: <i>Metropolitan Adelaide: Departmental Roads</i>	36
Table 23c Crashes and Casualties by Local Government Area and Severity: <i>Metropolitan Adelaide: All Roads</i>	37
Table 24a Crashes and Casualties by Local Government Area and Severity: <i>Rural: Council Roads</i>	38
Table 24b Crashes and Casualties by Local Government Area and Severity: <i>Rural: Departmental Roads</i>	40
Table 24c Crashes and Casualties by Local Government Area and Severity: <i>Rural: All Roads</i>	42
Table 25 Top Intersections with highest number of Casualty Crashes 2020	44

Motor Vehicle Type, Movement & Involvement		
Table 26	Motor Vehicles Involved in and Responsible for Crashes by Region and Severity	45
Table 27	Crashes and Casualties by Vehicle Movement of Motor Vehicle Responsible and Severity	46
Table 28	Crashes and Casualties by Pedestrian Responsible, Movement and Severity	46
Table 29	Crashes by Motor Vehicle Type Involved and Severity	47
Speed Involvement		
Table 30	Crashes and Casualties by Speed Involvement and Severity	47
CASUALTIES in 2020		48
Road User		
Table 31	Casualties by Road User Type, Severity, Age & Sex	49
Table 32	Casualties by Unit Type and Severity	50
Table 33	Motor Vehicle Casualties by Position in Vehicle and Severity	50
Seatbelts & Helmets		
Table 34	Casualties by Road User Type, Safety Device and Severity	51
Alcohol		
Table 35	Driver and Motorcycle Rider Casualties with BAC	52
Drugs		
Table 36	Driver and Motorcycle Rider Casualties with Drugs	52
Responsibility		
Table 37a	Road User Involved in and Responsible for Crashes by Age & Sex: <i>Fatal Crashes</i>	53
Table 37b	Road User Involved in and Responsible for Crashes by Age & Sex: <i>Serious Injury Crashes</i>	54
Table 37c	Road User Involved in and Responsible for Crashes by Age & Sex: <i>Minor Injury Crashes</i>	55
Table 37d	Road User Involved in and Responsible for Crashes by Age & Sex: <i>Property Damage Crashes</i>	56
Table 37e	Road User Involved in and Responsible for Crashes by Age & Sex: <i>All Crashes</i>	57
Table 38	Drivers & Motorcycle Riders Involved in and Responsible for Crashes by Licence Type and Severity	58
Table 39a	Drivers & Motorcycle Riders Responsible for Crashes by Licence Type and Age: <i>Fatal Crashes</i>	58
Table 39b	Drivers & Motorcycle Riders Responsible for Crashes by Licence Type and Age: <i>Serious Injury Crashes</i>	59
Table 39c	Drivers & Motorcycle Riders Responsible for Crashes by Licence Type and Age: <i>Minor Injury Crashes</i>	59
Table 39d	Drivers & Motorcycle Riders Responsible for Crashes by Licence Type and Age: <i>Property Damage Crashes</i>	60
Table 39e	Drivers & Motorcycle Riders Responsible for Crashes by Licence Type and Age: <i>All Crashes</i>	60
REFERENCE INFORMATION for South Australia		61
Demographic Data		
Table 40	Estimated Population by Age and Sex	62
Table 41	Licence and Permit Holders by Age and Sex	62
Vehicle Information		
Table 42	Motor Vehicle on Register by Vehicle Type	63
Table 43	Vehicle Kilometres Travelled by Vehicle Type	63

Key Points 2020

- A total of 11 534 crashes were processed for South Australia in 2020 - 85 fatal crashes, 624 serious injury crashes, 3 259 minor injury crashes and 7 566 property damage crashes. This resulted in 93 lives lost, 715 serious injuries and 4 069 minor injuries.
- The 93 lives lost that occurred in 2020 resulted in a fatality rate per 100 000 population of 5.25, above the national average of 4.3.
- **Greater Adelaide area** - The number of fatal crashes resulting in lives lost in the Greater Adelaide area declined in 2020 compared to 2019, as did the number of serious injury crashes. There were 36 fatal crashes, this is 13 less than the previous year and 11% less than the previous five year average.
There were 428 serious injury crashes in 2020, this is less than the 504 in 2019, and is above the previous five year average of 368.
Within Greater Adelaide, 31% of fatal crashes were at intersections, up from 20% in 2019.
- **Rural areas** - Fatal crashes resulting in lives lost have declined in rural areas in 2020 compared to 2019. There were 49 fatal crashes in rural areas in 2020, 12 less than 2019 and one less than the previous five year average.
Serious injury crashes also declined from 225 in 2019 to 196 in 2020 (five year average of 228).
In rural areas, 51% of fatal crashes were single vehicle crashes, such as a vehicle rolling over or hitting objects such as trees. This is an increase from 44% in 2019.
- **Young road users** - The number of 16-19 year olds who lost their life increased by two from nine in 2019 to 11 in 2020, the previous five year average was seven lives lost. The number of deaths in the 20-24 year old range increased from 12 in 2019 to 13 in 2020, the previous five year average was ten lives lost.
The number of 16-24 year olds seriously injured declined from 158 in 2019 to 129 in 2020, this is below the five year average of 138 for 16-24 year olds seriously injured.
- **Older road users** - The number of people aged 70 or over who lost their life declined in 2020, 18 people in this age group lost their life compared to 29 in 2019 and a five year average of 23 lives lost.
Serious injuries also declined from 109 in 2019 to 90 in 2020, the previous five year average is 83 serious injuries for this age group.
- **Drivers/passengers** - Drivers (incl. heavy vehicle drivers) who lost their lives declined from 60 in 2019 to 47 in 2020. Passengers who lost their life increased from nine in 2019 to 15 in 2020 and is equal to the five year average of 15 deaths.
Drivers (incl. heavy vehicle drivers) seriously injured decreased from 349 in 2019 to 293 in 2020. Passengers seriously injured also declined from 108 in 2019 to 96 in 2020, below the five year average of 118.
- **Motorcyclists** - The number of lives lost increased from 17 in 2019 to 21 in 2020. The five year average of motorcyclists killed is 14 per year.
Serious injuries also declined from 201 in 2019 to 194 in 2020, above the previous five year average of 133 serious injuries.
- **Pedestrians** - The number of lives lost declined substantially from 21 in 2019 to eight in 2020. This number is below the average of 14 deaths over the previous five years.
Serious injuries also declined for pedestrians. In 2020, 57 pedestrians were seriously injured compared to 80 in 2019, this is also above the five year average of 59 pedestrians seriously injured.
- **Cyclists** - The number of lives lost declined from seven in 2019 to two in 2020. The five year average of cyclists killed is five per year.
The number of cyclists seriously injured has declined from 94 in 2019 to 73 in 2020. The five year average of cyclists seriously injured is 62 per year.
- **Seatbelts** - 30% of drivers and passengers who lost their life in 2020 were not wearing a seatbelt at the time of the crash. This is an increase compared to 27% in 2019 and slightly above the previous five year average of 25%.

Summary Data for 2020

	Number
CRASHES	
Fatal Crashes	85
Serious Injury Crashes	624
Minor Injury Crashes	3 259
Property Damage Crashes	7 566
TOTAL	11 534
CASUALTIES	
Fatalities	93
Serious Injuries	715
Minor Injuries	4 069
TOTAL	4 877
OTHER DATA	
Vehicles on motor vehicle register¹	1 485 154
Fatalities per 10 000 vehicles	0.63
Serious injuries per 10 000 vehicles	4.81
Casualties per 10 000 vehicles	32.84
Licence holders²	1 283 750
Driver/rider fatalities per 10 000 licence holders	0.55
Driver/rider serious injuries per 10 000 licence holders	3.26
Driver/rider casualties per 10 000 licence holders	32.84
Population³	1 770 375
Fatalities per 100 000 population	5.25
Serious Injuries per 100 000 population	40.39
Casualties per 100 000 population	275.48

¹ Excludes trailers, caravans, plant and equipment. Source: Registration and Licensing, Department for Infrastructure and Transport, June 2020.

² No. of individual licence holders (inc. learner's permit). Source: Registration and Licensing, Department for Infrastructure and Transport, December 2020.

³ Estimated resident population. Source: *Australian Demographic Statistics*, ABS, cat. no. 3101.0, June 2019.

Preface

This publication presents information compiled from police reported crashes in South Australia for 2020 and is the fifty third edition in an annual series that commenced with 1967 data.

How crashes are reported and processed?

When a reportable road crash occurs, South Australia Police (SAPOL) collect the data which is entered into SAPOL's SHIELD system. The reports are then electronically forwarded to the Road Safety section of the Department for Infrastructure and Transport (the Department) for further processing and geocoding. The information is checked for accuracy and consistency to ensure the reliability of any published statistics. Processed crash data is stored in the Department's 'Road Crash Database' (TARS).

Serious injury data reflects on-going improvements made by SAPOL to its data collection methods. Historically, the decision to report a road crash casualty as being 'admitted to hospital' was sometimes made by the police at the scene of the crash when a person was taken away by ambulance. From 2008, SAPOL officers started to verify whether injured persons were formally admitted to hospital rather than just being treated as a casualty at hospital and released. This improved classification of seriously injured casualties was utilised in an increasing proportion of collision reports until complete coverage occurred in 2012.

The data presented in this report is for information purposes only and should be used with care before drawing conclusions not contained in this report. Details in this publication may differ from information previously released or published due to the database continually being updated with new information. Road crash information contained in this publication is derived from TARS. Please note, data reported within this publication is correct at the time of extraction. Due to continual quality assurances and process updates historical data may not match previous publications.

Scope

Note: The following changes were made to the Property Damage Only (PDO) definition in 2003, 2013, 2016 and 2017:

1 January 2017

The Department processed all casualty crashes and only 'property damage' crashes involving any type of vehicle towed away from the crash or where involving:

- a motorcycle (includes quad bikes), motor scooter, motorised bicycle and regular bicycle, regardless of whether another vehicle was involved;
- any type of heavy vehicle with a GVML > 4.5 tonnes or a bus with 13 seats or more;
- a train or tram colliding with a vehicle or pedestrian within the road related area; and
- any type of vehicle colliding with a pedestrian.

1 December 2016

The Department processed all 'property damage' crashes for the month of December 2016 in accordance with the Australian Transport Safety Bureau (ATSB) guidelines.

Prior to 1 December 2016, the crash statistics included in this publication were confined to those crashes which:

- were reported to SA Police (SAPOL) (excludes SAPOL online crash reporting);
- occurred on a road, defined in the Road Traffic Act 1961;
- were defined by the ATSB publication "Guidelines For Determining Events as Road Crashes in Australia" (published March 2000);
- involved at least one moving vehicle;
- involved at least one person being killed or injured, vehicle towed away, or total property damage of \$5000 or greater; and
- included all crashes involving bicycles, motorcycles and scooters (irrespective of damage value or injury level).

1 January 2013

The Department only processed 'property damage' crashes with an aggregated damage value of \$5000 or greater, or where a vehicle was towed away.

1 July 2003

The Department only processed 'property damage' crashes where the value was \$3000, or where a vehicle was towed away. Preceding this, the 'property damage' crash value was \$1000 introduced on 1 January 1998.

Related Publications

All monthly and annual statistical reports are available from the Department's Road Safety website https://towardszerotogether.sa.gov.au/road_crash_facts

Acknowledgements

Acknowledgement is extended to the South Australia Police for the supply of reported road crash reports.

Notes

From 1 January 2013, new ABS boundaries were introduced into the coding corresponding to the Greater Adelaide City Statistical Area, replacing the previous metro/rural boundaries. As a consequence, Mt Barker and Adelaide Hills Council, part of Adelaide Plains Council, Barossa and Light Councils are now incorporated into Metropolitan Adelaide.

Definitions & Explanatory Notes

BAC	Blood Alcohol Concentration (mg/100mL).
Bicycle	Any two or three wheeled device operated by pedals and propelled by human power. Includes motorised bicycles.
Bicycle Rider	A person occupying the controlling position of a bicycle.
Bicyclist	A bicycle rider or passenger, often referred to as a cyclist.
Driver	A controller of a motor vehicle other than a motorcycle or bicycle.
Drug	Methamphetamine, MDMA (Ecstasy) and/or THC (cannabis).
Casualty	Any person killed or injured as a result of a crash.
Casualty Crash	Crash where someone has been killed or injured as a result of the crash.
Crash Type Code (DCA)	Definition for Coding Accidents - a coding system to describe the events involved in a crash. The 'crash-type' is based on the traffic movements leading up to the crash. Participant intent, as well as actual movement, is used in determining the DCA crash type.
Fatal Crash	A crash for which there is at least one fatality.
Fatality/Life lost	A person who dies within 30 days of a crash as a result of injuries sustained in that crash.
Heavy Vehicle	Heavy vehicle includes the following vehicle types: Rigid truck, Semi-Trailer, Bus, B Double and other defined special vehicles.
Intersection Crash	A crash for which the first impact occurs at or within a 20 metre radius of an intersection.
Metropolitan	Greater Adelaide City Statistical Area. Comprises of the following Local Government Areas: Adelaide, Burnside, Campbelltown, Charles Sturt, Holdfast Bay, Marion, Mitcham, Norwood Payneham & St Peters, Onkaparinga, Playford, Port Adelaide & Enfield, Prospect, Salisbury, Tea Tree Gully, Unley, Walkerville, West Torrens, Adelaide Hills, Mount Barker, Gawler and part of Barossa, Light and Adelaide Plains councils.
Mid-block Crash	A crash that occurs between two intersections.
Minor Injury	A person who sustains injuries requiring medical treatment, either by a doctor or in a hospital, as a result of a road crash, who was not admitted to hospital and who does not die as a result of those injuries within 30 days of the crash.
Minor Injury Crash	A crash in which at least one person sustains injury but no person is seriously injured or dies within 30 days of the crash.
Motor Vehicle	Any road vehicle which is mechanically or electrically powered but not operated on rails.
Motorcycle	Any mechanically or electrically propelled two or three wheeled vehicle with or without side-car; includes solo motorcycle, motorcycle with sidecar, motor scooter, mini-bike, and quad bikes.
Motorcycle Rider	A person occupying the controlling portion of a motorcycle.
Motorcyclist	Motorcycle rider or pillion passenger.
Other Road User	Occupants/controllers of animal drawn vehicles, ridden animals, railway vehicles, tram, and other defined special vehicle.
Other Vehicle Type	Animal drawn vehicles, ridden animals, railway vehicles, and tram.
Passenger	Any person, other than the controller, who is in, on, or falling from a road vehicle at the time of the crash, provided a portion of the person is in/on the road vehicle. It does not include those that are boarding or alighting a road vehicle at the time of the crash.
Passenger Vehicle	Includes all cars and car derivatives including 4WDs, vans, utilities and station wagons. Excludes heavy vehicles, light trucks (≤ 4.5 tonnes), motorcycles and bicycles.
Pedestrian	Any person who is standing, walking, playing, lying on the road or alighting or boarding a road vehicle at the time of the crash. It does not include those that have fallen from a vehicle. Also includes riders and passengers of motorised wheelchairs/wheelchairs, small wheeled vehicles and gopher users.

Pillion Passenger	A passenger on but not controlling a motorcycle.
Property Damage Crash	A crash resulting in property damage in excess of the prescribed amount in which no person is injured or dies within 30 days of the crash.
Road Crash	Any apparent unpremeditated event reported to the police and resulting in death, injury or property damage in excess of the prescribed amount, and attributed to the movement of the road vehicle on a road.
Road User	Any person who is a pedestrian, rider, or the occupant of a road vehicle.
Rural	Area outside of metropolitan Adelaide. Comprises of the following local government areas: Ceduna, Cleve, Elliston, Franklin Harbor, Kimba, Lower Eyre Peninsula, Port Lincoln, Streaky Bay, Tumby Bay, Whyalla, Cooper Pedy, Finders Ranges, Port Augusta, Roxby Downs, Alexandrina, Kangaroo Island, Victor Harbor, Yankalilla, Grant, Mount Gambier, Naracoorte Lucindale, Robe, Tatiara, Wattle Range, Berri and Barmera, Karoonda East Murray, Loxton Waikerie, Mid Murray, Murray Bridge, Renmark Paringa, Southern Mallee, The Coorong, Barunga West, Clare & Gilbert Valleys, Copper Coast, Goyder, Mount Remarkable, Northern Areas, Orroroo/Carrieton, Peterborough, Port Pirie, Wakefield, Yorke Peninsula and part of Barossa, Light and Adelaide Plains councils.
Serious Casualty	A fatality/live lost or serious injury.
Serious Injury	A person who sustains injuries and is admitted to hospital for a minimum period of an overnight stay as a result of a road crash and who does not die as a result of those injuries within 30 days of the crash.
Serious Injury Crash	A non-fatal crash in which at least one person is seriously injured.
Vehicle Occupant	Driver or passenger within a motor vehicle.

Speed definition

A motor vehicle is assessed as having been speeding if it satisfies the conditions described below:

- a) The vehicle's controller (driver or rider) was charged with a speeding offence; or the vehicle was described by police as travelling at excessive speed; or the stated speed of the vehicle was in excess of the speed limit; or the vehicle weight or the speed of the vehicle was faster than that allowed for the licence class of the driver or rider, or the vehicle weight, OR
- b) The vehicle was performing a manoeuvre characteristic of excessive speed, that is:
 - while on a curve the vehicle jack-knifed, skidded, slid or the controller lost control; or
 - the vehicle ran off the road while negotiating a bend or turning a corner and the controller was not distracted by something or disadvantaged by drowsiness or sudden illness; and was not swerving to avoid another vehicle, animal or object and the vehicle did not suffer equipment failure.

This is based on Transport for NSW criteria for determining whether or not a crash is to be considered as having involved speed as a contributing factor.

CRASH & CASUALTY TRENDS

- Historical Data
- Fatality Rates
- Interstate and International Comparisons
- Causes of Death
- Road User Type
- Age & Sex
- Region

Table 1: Trends in South Australia, 1995 - 2020

Year	Crashes						Casualties					Vehicles on Register ¹ ('000)	Licence Holders ² ('000)	Population ³ ('000)	Vehicle Kilometres Travelled ⁴ ('000 000)	Fatalities per			100, (M) Vehicle Kilometres Travelled
	Fatal Crashes	Serious Injury Crashes	Minor Injury Crashes	TOTAL Casualty Crashes	Property Damage Crashes	ALL Crashes	Fatalities	Serious Injuries	Minor Injuries	ALL Casualties	10,000 Vehicles					10,000 Licence Holders ⁵	100,000 Population		
1995	164	1185	5097	6446	32844	39290	182	1521	6638	8341	945	975	1469	13195	1.93	0.98	12.39	1.38	
1996	162	1324	5023	6509	32432	38941	181	1720	6775	8676	959	979	1474	-	1.89	1.09	12.28	-	
1997	124	1168	5138	6430	32442	38872	149	1509	6716	8374	969	995	1479	-	1.54	0.80	10.07	-	
1998	152	1225	5551	6928	32664	39592	168	1566	7345	9079	995	995	1487	13974	1.69	0.85	11.30	1.20	
1999	132	1238	6047	7417	34287	41704	153	1607	8071	9831	1010	1012	1493	13081	1.52	0.85	10.25	1.17	
2000	151	1229	6433	7813	33172	40985	166	1627	8501	10294	1011	1025	1498	13153	1.64	1.04	11.08	1.26	
2001	137	1245	6351	7733	33041	40774	154	1603	8497	10254	1023	1045	1502	15085	1.51	0.85	10.25	1.02	
2002	138	1199	6249	7586	32525	40111	154	1538	8382	10074	1045	1047	1522	14855	1.47	0.88	10.12	1.04	
2003	135	1169	5786	7090	23220	30310	156	1470	7597	9223	1034	1052	1527	14963	1.51	0.85	10.21	1.04	
2004	128	1071	5521	6720	15548	22268	139	1331	7297	8767	1049	1072	1534	15241	1.32	0.93	9.06	0.91	
2005	126	994	5106	6226	14945	21171	147	1296	6629	8072	1065	1094	1542	14533	1.38	0.84	9.53	1.01	
2006	104	1092	5009	6205	14513	20718	117	1358	6489	7964	1085	1042	1555	15535	1.08	0.77	7.53	0.75	
2007	108	1090	5295	6493	15230	21723	125	1368	6961	8454	1107	1073	1585	14212	1.13	0.62	7.89	0.88	
2008	87	996	5615	6698	15223	21921	99	1217	7174	8490	1171	1094	1602	-	0.85	0.56	6.18	-	
2009	104	908	5213	6225	15506	21731	119	1108	6618	7845	1201	1135	1623	-	0.99	0.65	7.33	-	
2010	105	886	5424	6415	15877	22292	118	1050	6907	8075	1226	1136	1645	14615	0.96	0.64	7.17	0.81	
2011	95	781	5471	6347	16970	23317	103	932	6896	7931	1265	1141	1657	-	0.81	0.53	6.22	-	
2012	86	637	5377	6100	16729	22829	94	761	6624	7479	1285	1155	1655	16313	0.73	0.56	5.68	0.58	
2013	89	666	5037	5792	10883	16675	97	790	6290	7177	1305	1186	1671	-	0.74	0.51	5.80	-	
2014	96	594	5005	5695	10467	16162	108	711	6163	6982	1322	1196	1686	16715	0.82	0.53	6.41	0.65	
2015	96	657	4616	5369	10063	15432	102	759	5800	6661	1349	1204	1699	-	0.76	0.52	6.00	-	
2016	77	574	4562	5213	11562	16775	86	692	5787	6565	1419	1225	1708	16915	0.61	0.51	5.03	0.51	
2017	93	533	4374	5000	8237	13237	100	622	5515	6237	1442	1238	1723	-	0.69	0.57	5.80	-	
2018	75	485	4393	4953	8646	13599	80	576	5468	6124	1443	1245	1736	17817	0.55	0.39	4.61	0.45	
2019	110	729	3937	4776	8188	12964	114	833	5084	6031	1460	1257	1751	-	0.78	0.41	6.51	-	
2020	85	624	3259	3968	7566	11534	93	715	4069	4877	1485	1283	1770	16392	0.63	0.51	5.25	0.57	

¹ At June 2020. Excludes tractors, trailers, caravans, plant and equipment. Source: TRUMPS database, Registration & Licensing Section, Department for Infrastructure and Transport.

² At December 2020. Source: TRUMPS database, Registration & Licensing Section, Department for Infrastructure and Transport.

³ Population as of June 2020. Source: Australian Bureau of Statistics, *Australian Demographic Statistics*, cat.no. 3101.0.

⁴ Travel for the year ended June 2020. Source: Australian Bureau of Statistics, *Survey of Motor Vehicle Use*, cat. no. 9208.0.

⁵ Licence holder fatality rate is based on driver and rider lives lost only.

Note:

Changes were made to the Property Damage Only (PDO) definition in 1998, 2003, 2013, 2016 and 2017. Refer to **Scope**, page 5 for full details.

Figure 1: Data Trends in South Australia, 1995 - 2020

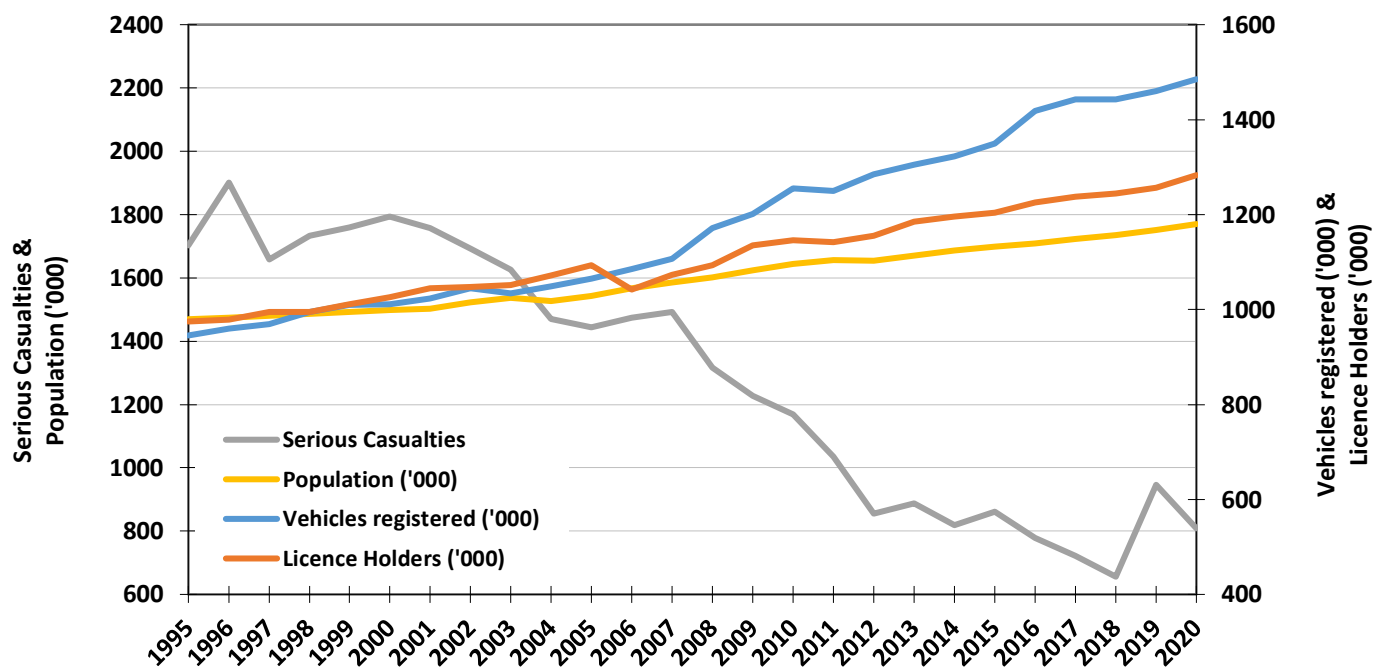
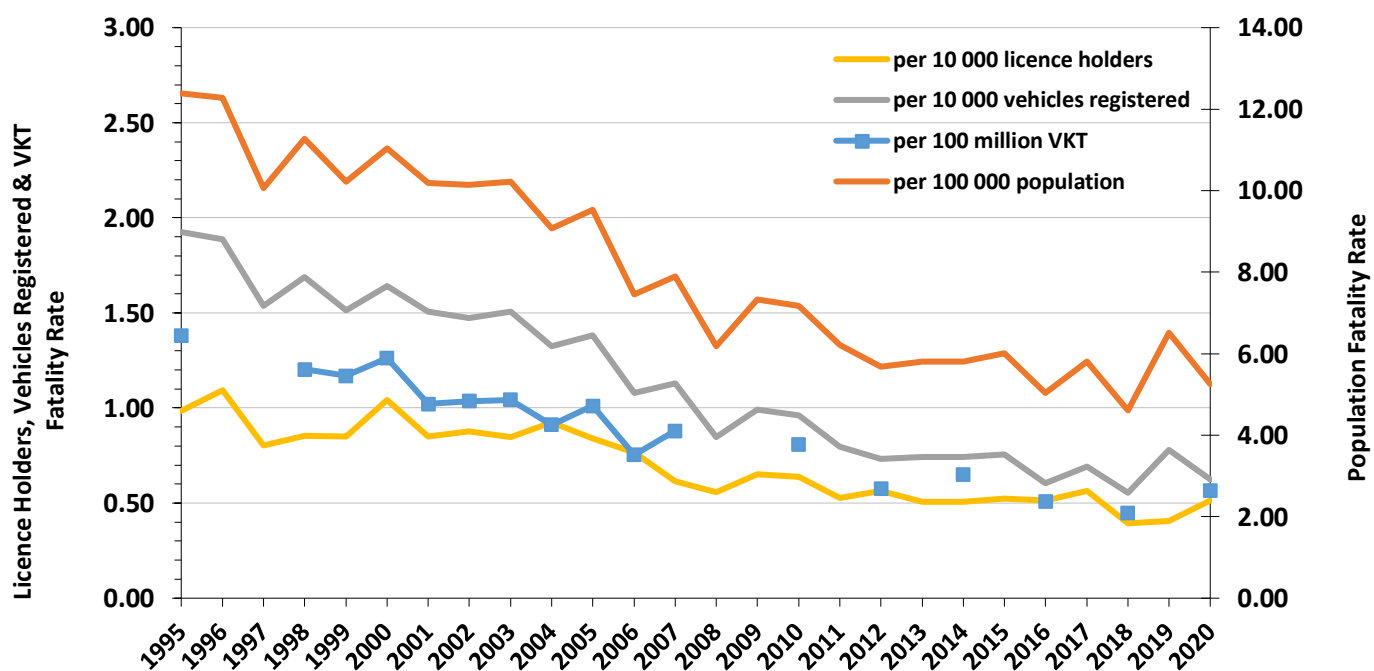


Figure 2: Fatality Rates in South Australia, 1995 - 2020



Note: Changes were made to the Property Damage Only (PDO) definition in 1998, 2003, 2013, 2016 and 2017. Refer to **Scope**, page 5 for full details.

Table 2: Comparison with other Australian Jurisdictions¹, 2020

	Fatalities ¹	Vehicles on register ² ('000)	Population ³ ('000)	Fatalities per 10 000 vehicles	Fatalities per 100 000 population
SOUTH AUSTRALIA	93	1,485	1,770	0.63	5.25
New South Wales	297	5,779	8,168	0.51	3.64
Victoria	212	5,120	6,697	0.41	3.17
Queensland	276	4,205	5,176	0.66	5.33
Western Australia	154	2,279	2,664	0.68	5.78
Tasmania	36	506	541	0.71	6.66
Australian Capital Territory	7	311	431	0.23	1.62
Northern Territory	29	160	246	1.81	11.78
AUSTRALIA	1,104	19,846	25,697	0.56	4.30

Table 3a: Road Crash Fatalities by Age Group compared with Deaths Registered in South Australia, 2019

Age Groups	Deaths Registered in South Australia ⁴	Road Fatalities ⁵	
		Number	% of All Deaths
0-14	76	2	3%
15-19	31	10	32%
20-24	53	12	23%
25-29	51	6	12%
30-34	82	13	16%
35-39	117	7	6%
40-49	403	15	4%
50-59	831	13	2%
60-69	1,564	7	0%
70+	10,714	29	0%
Unknown	0	0	0%
TOTAL	13,922	114	1%

Table 3b: Age of Passenger Vehicles Involved in Serious Casualty Crashes, 2016 - 2020

Passenger Vehicle Age Group	2016	2017	2018	2019	2020
0-4	114	145	87	154	142
5-9	157	160	139	188	170
10-14	206	164	145	185	175
15-19	141	151	119	199	146
20+	108	100	106	124	111
Unknown	17	17	6	12	3
TOTAL	743	737	602	862	747

¹ Australian data based on information published by the Bureau of Infrastructure, Transport and Regional Economics (BITRE) for December 2020.

² Australian figures (except SA) are as at June 2020. Source: Australian Bureau of Statistics, *Motor Vehicle Census Australia*, cat. no. 9309.0. These figures may not agree with registration statistics for individual States and Territories. Data for SA sourced from TRUMPS, as of June 2020.

³ Population as of June 2020. Source: Australian Bureau of Statistics, *Australian Demographic Statistics*, cat.no. 3101.0.

⁴ Source: Australian Bureau of Statistics, *Deaths, Australia 2019*, cat.no. 3302.0.

⁵ Source: The Department's TARS road crash database.

Note:

Changes were made to the Property Damage Only (PDO) definition in 1998, 2003, 2013, 2016 and 2017. Refer to **Scope**, page 5 for full details.

Table 4: Casualties by Road User Type and Severity, 1995 - 2020

Year	Vehicle Occupant						Motorcyclist						Pedestrian			Bicyclist			Other Road User			ALL ROAD USERS		
	Driver			Passenger			Rider			Pillion Passenger			F	SI	MI	F	SI	MI	F	SI	MI	F	SI	MI
	F	SI	MI	F	SI	MI	F	SI	MI	F	SI	MI												
1995	84	648	3571	36	432	1823	12	153	359	0	22	50	40	186	411	8	80	421	2	0	3	182	1521	6638
1996	92	779	3615	40	522	1922	15	189	365	3	14	33	24	153	428	7	59	403	0	4	9	181	1720	6775
1997	67	712	3724	44	408	1749	13	144	353	1	15	31	20	147	427	4	79	427	0	4	5	149	1509	6716
1998	72	779	4213	44	383	1972	13	157	314	0	20	26	35	142	402	4	79	408	0	6	10	168	1566	7345
1999	71	749	4749	38	456	2173	15	123	277	0	14	20	26	178	419	3	84	425	0	3	8	153	1607	8071
2000	91	739	5132	37	490	2191	16	158	323	0	12	25	21	151	409	1	75	412	0	2	9	166	1627	8501
2001	76	809	5023	32	419	2298	13	156	300	1	13	21	26	143	426	6	58	417	0	5	12	154	1603	8497
2002	72	753	5012	39	434	2196	20	153	321	1	7	22	19	129	425	3	59	402	0	3	4	154	1538	8382
2003	77	783	4663	44	343	1896	12	144	280	1	19	27	17	115	359	5	63	367	0	3	5	156	1470	7597
2004	80	687	4320	23	316	1915	20	157	288	1	9	20	12	104	369	3	57	382	0	1	3	139	1331	7297
2005	74	646	3943	39	342	1598	18	125	276	2	11	19	11	111	374	3	61	418	0	0	1	147	1296	6629
2006	58	670	3772	20	302	1586	22	178	322	1	17	22	12	111	365	4	80	419	0	0	3	117	1358	6489
2007	58	685	4011	37	347	1762	8	162	409	0	10	17	17	108	330	5	56	429	0	0	3	125	1368	6961
2008	45	582	4211	24	264	1720	16	176	435	1	8	23	12	120	334	1	67	447	0	0	4	99	1217	7174
2009	60	549	4010	32	243	1479	14	159	389	1	9	15	10	89	279	2	59	442	0	0	4	119	1108	6618
2010	57	500	4205	24	211	1574	16	146	388	0	7	20	16	103	245	5	82	470	0	1	5	118	1050	6907
2011	40	445	4236	22	193	1505	20	143	361	1	9	19	17	77	269	3	61	499	0	4	7	103	932	6896
2012	52	350	4027	14	137	1431	13	113	339	2	6	14	10	77	296	3	78	516	0	0	1	94	761	6624
2013	48	384	3860	17	122	1326	12	129	369	0	5	18	15	87	231	5	63	486	0	0	0	97	790	6290
2014	52	320	3779	24	135	1225	11	127	417	0	3	20	17	62	227	4	64	495	0	0	0	108	711	6163
2015	52	358	3444	17	132	1247	11	139	386	0	6	13	18	50	205	4	74	505	0	0	0	102	759	5800
2016	41	325	3495	23	140	1200	8	105	390	0	4	9	9	66	245	5	52	448	0	0	0	86	692	5787
2017	46	313	3351	11	121	1082	24	105	377	0	3	9	17	41	246	2	39	450	0	0	0	100	622	5515
2018	41	277	3317	16	87	1079	10	97	391	0	6	11	6	58	233	7	51	435	0	0	2	80	576	5468
2019	60	349	3122	9	108	1048	17	196	294	0	5	10	21	80	220	7	94	383	0	1	7	114	833	5084
2020	47	293	2526	15	96	784	19	189	256	2	5	12	8	57	153	2	73	336	0	2	2	93	715	4069

F - Fatality/Life lost, SI - Serious Injury, MI - Minor Injury

Note:

Changes were made to the Property Damage Only (PDO) definition in 1998, 2003, 2013, 2016 and 2017. Refer to **Scope**, page 5 for full details.

Table 5: Casualties by Age Group and Severity, 1995 - 2020

Year	0-15			16-19			20-24			25-29			30-39			40-49			50-59			60-69			70+			Unknown			ALL CASUALTIES		
	F	SI	MI	F	SI	MI	F	SI	MI	F	SI	MI	F	SI	MI	F	SI	MI	F	SI	MI	F	SI	MI	F	SI	MI	F	SI	MI	F	SI	MI
1995	14	132	597	22	225	884	24	255	1094	16	168	716	39	226	1056	18	154	807	10	94	450	19	69	308	20	99	330	0	99	396	182	1521	6638
1996	12	162	642	18	230	931	27	279	1002	21	203	708	26	267	1155	23	160	824	12	98	475	15	101	286	26	118	362	1	102	390	181	1720	6775
1997	8	149	603	19	194	840	21	233	973	13	149	718	28	255	1127	11	150	866	11	91	524	12	79	307	24	110	350	2	99	408	149	1509	6716
1998	10	134	623	18	251	979	17	212	1099	12	172	820	25	225	1207	21	181	889	12	103	555	14	66	315	37	120	346	2	102	512	168	1566	7345
1999	14	147	662	21	218	987	23	222	1056	11	136	904	22	225	1337	18	172	996	11	110	620	13	81	347	20	118	343	0	178	819	153	1607	8071
2000	11	121	547	26	212	1115	16	229	1180	23	158	893	21	225	1427	21	196	1042	10	113	698	14	81	396	24	111	376	0	181	827	166	1627	8501
2001	10	101	519	16	223	1092	14	210	1168	16	159	887	32	260	1405	14	192	1120	11	128	724	13	72	346	28	80	388	0	178	848	154	1603	8497
2002	16	107	461	16	198	1142	18	213	1159	17	164	875	28	241	1385	24	177	1088	10	104	680	5	54	349	20	108	416	0	172	827	154	1538	8382
2003	11	81	434	21	189	993	20	225	1060	11	147	750	26	244	1282	19	182	1081	18	119	701	10	62	329	20	100	331	0	121	636	156	1470	7597
2004	7	64	423	7	199	905	27	212	1045	17	135	652	26	207	1204	18	169	961	17	98	626	11	56	351	9	84	369	0	107	761	139	1331	7297
2005	8	86	349	18	173	874	28	195	920	19	115	616	16	205	1099	19	157	956	11	121	626	11	77	341	17	94	315	0	73	533	147	1296	6629
2006	3	74	441	12	181	707	17	186	932	11	129	610	17	225	1028	23	181	901	14	122	681	10	70	355	10	88	344	0	102	490	117	1358	6489
2007	6	60	402	18	173	804	16	210	970	14	137	703	14	214	1102	13	167	982	10	139	691	5	73	352	29	100	388	0	95	567	125	1368	6961
2008	5	51	439	16	157	812	12	177	921	10	114	700	19	211	1156	9	164	1064	13	110	797	4	75	434	11	91	365	0	67	486	99	1217	7174
2009	4	60	393	20	138	765	22	138	827	10	124	682	17	179	1120	20	132	1040	12	112	728	2	81	417	12	94	320	0	50	326	119	1108	6618
2010	5	49	397	19	110	737	12	131	846	5	121	740	16	145	1156	22	155	1013	17	112	879	8	72	406	14	120	381	0	35	352	118	1050	6907
2011	4	43	388	6	94	694	5	127	937	9	95	688	22	146	1177	22	141	1055	12	106	833	4	77	460	19	73	390	0	30	274	103	932	6896
2012	3	32	393	7	76	616	10	104	837	7	75	695	9	106	1139	16	112	997	11	91	785	9	70	464	22	73	423	0	22	275	94	761	6624
2013	6	37	349	2	50	569	13	93	757	5	81	692	6	112	1049	20	120	959	12	117	769	9	70	457	24	82	451	0	28	238	97	790	6290
2014	7	26	337	6	80	517	11	90	764	9	71	652	13	99	998	21	122	966	6	93	773	13	54	510	22	57	423	0	19	223	108	711	6163
2015	5	28	381	7	71	525	9	84	687	7	60	594	13	128	925	13	106	826	11	105	789	14	78	442	23	80	431	0	19	200	102	759	5800
2016	5	33	382	3	81	508	12	86	733	9	76	592	11	82	923	15	94	824	3	97	711	5	51	481	23	87	438	0	5	195	86	692	5787
2017	3	26	411	8	43	487	12	56	581	8	54	560	10	81	833	11	83	806	11	88	701	12	60	450	25	110	438	0	21	248	100	622	5515
2018	4	26	382	10	48	447	7	63	606	6	50	549	7	72	904	13	79	785	7	83	743	11	55	470	15	83	425	0	17	157	80	576	5468
2019	3	32	362	9	64	405	12	94	589	6	79	484	20	128	855	15	93	731	13	122	675	7	103	456	29	109	446	0	9	81	114	833	5084
2020	2	30	263	11	52	365	13	77	447	8	70	436	17	112	669	9	96	591	9	104	509	6	81	379	18	90	371	0	3	39	93	715	4069

F - Fatality/Life Lost, SI - Serious Injury, MI - Minor Injury

Note:

Changes were made to the Property Damage Only (PDO) definition in 1998, 2003, 2013, 2016 and 2017. Refer to **Scope**, page 5 for full details.

Table 6: Casualties by Sex and Severity, 1995 - 2020

Year	Male			Female			Unknown			ALL PERSONS		
	F	SI	MI	F	SI	MI	F	SI	MI	F	SI	MI
1995	130	967	3233	52	553	3355	0	1	50	182	1521	6638
1996	132	1046	3170	48	669	3571	1	5	34	181	1720	6775
1997	98	947	3173	51	554	3488	0	8	55	149	1509	6716
1998	111	941	3277	55	605	3897	2	20	171	168	1566	7345
1999	96	965	3715	56	613	4192	1	29	164	153	1607	8071
2000	121	981	3914	45	626	4479	0	20	108	166	1627	8501
2001	113	974	3929	41	621	4504	0	8	64	154	1603	8497
2002	117	961	3951	37	574	4426	0	3	5	154	1538	8382
2003	109	914	3596	47	552	3995	0	4	6	156	1470	7597
2004	111	823	3467	28	507	3808	0	1	22	139	1331	7297
2005	108	831	3284	39	464	3320	0	1	25	147	1296	6629
2006	89	873	3082	28	485	3401	0	0	6	117	1358	6489
2007	94	871	3315	31	497	3621	0	0	25	125	1368	6961
2008	74	758	3369	25	459	3794	0	0	11	99	1217	7174
2009	92	702	3182	27	404	3419	0	2	17	119	1108	6618
2010	75	663	3259	43	386	3635	0	1	13	118	1050	6907
2011	76	584	3278	27	348	3610	0	0	8	103	932	6896
2012	72	499	3150	22	262	3464	0	0	10	94	761	6624
2013	68	502	2940	29	288	3338	0	0	12	97	790	6290
2014	76	472	2922	32	239	3239	0	0	2	108	711	6163
2015	66	502	2773	36	256	3021	0	1	6	102	759	5800
2016	56	430	2800	30	262	2975	0	0	12	86	692	5787
2017	80	391	2689	20	231	2816	0	0	10	100	622	5515
2018	80	391	2689	20	231	2816	0	0	10	100	622	5515
2019	86	570	2427	28	263	2640	0	0	17	114	833	5084
2020	67	490	2073	26	225	1983	0	0	13	93	715	4069

F - Fatality/Life lost, SI - Serious Injury, MI - Minor Injury

Note:

Changes were made to the Property Damage Only (PDO) definition in 1998, 2003, 2013, 2016 and 2017. Refer to **Scope**, page 5 for full details.

Table 7: Crashes and Casualties by Region¹ and Severity, 1995 - 2020

Year	Metropolitan Adelaide ¹									Rural South Australia ¹								
	Crashes					Casualties				Crashes					Casualties			
	Fatal Crashes	Serious Injury Crashes	Minor Injury Crashes	Property Damage Crashes	ALL CRASHES	Fatalities	Serious Injuries	Minor Injuries	CASUALTIES	Fatal Crashes	Serious Injury Crashes	Minor Injury Crashes	Property Damage Crashes	ALL CRASHES	Fatalities	Serious Injuries	Minor Injuries	CASUALTIES
1995	77	677	4120	27726	32600	77	817	5152	6046	87	509	978	5122	6696	105	704	1486	2295
1996	68	700	4031	27232	32031	73	861	5206	6140	94	625	991	5194	6904	108	860	1568	2536
1997	52	665	4199	27194	32110	55	800	5294	6149	72	504	928	5231	6735	94	711	1410	2215
1998	65	698	4579	27285	32627	70	855	5868	6793	87	527	970	5360	6944	98	710	1474	2282
1999	56	674	5091	28790	34611	61	830	6618	7509	76	564	956	5499	7095	92	777	1454	2323
2000	63	681	5423	28055	34222	68	842	6983	7893	88	548	1009	5117	6762	98	785	1516	2399
2001	64	647	5369	27988	34068	67	768	6950	7785	73	598	983	5051	6705	87	835	1548	2470
2002	49	621	5218	27582	33470	54	754	6743	7551	89	578	1031	4942	6640	100	784	1639	2523
2003	57	585	4839	19316	24797	62	731	6188	6981	78	584	947	3902	5511	94	739	1409	2242
2004	61	577	4583	12713	17934	64	692	5903	6659	67	494	938	2835	4334	75	639	1394	2108
2005	47	513	4212	12225	16997	51	620	5300	5971	79	481	894	2720	4174	96	676	1329	2101
2006	50	619	4146	11919	16734	54	730	5159	5943	54	473	863	2594	3984	63	628	1330	2021
2007	45	614	4380	12504	17543	49	722	5565	6336	63	476	915	2726	4180	76	646	1396	2118
2008	40	557	4643	12516	17756	44	649	5766	6459	47	439	972	2707	4165	55	568	1408	2031
2009	36	494	4287	12640	17457	41	565	5314	5920	68	414	926	2866	4274	78	543	1304	1925
2010	44	478	4505	12971	17998	45	531	5632	6208	61	408	919	2906	4294	73	519	1275	1867
2011	41	419	4572	14088	19120	42	472	5603	6117	54	362	899	2883	4198	61	460	1293	1814
2012	29	347	4464	13915	18755	31	384	5378	5793	57	290	913	2814	4074	63	377	1246	1686
2013	41	394	4379	9242	14056	43	459	5375	5877	48	272	658	1641	2619	54	331	915	1300
2014	37	346	4328	8920	13631	38	376	5203	5617	59	248	677	1549	2533	70	335	960	1365
2015	43	391	3916	8613	12963	43	428	4800	5271	53	266	700	1450	2469	59	331	1000	1390
2016	32	339	3881	9886	14138	34	382	4762	5178	45	235	681	1676	2637	52	310	1025	1387
2017	54	322	3703	6977	11056	56	359	4583	4998	39	211	671	1260	2181	44	263	932	1239
2018	24	284	3758	7466	11532	24	323	4572	4919	51	201	635	1180	2067	56	253	896	1205
2019	49	504	3393	7121	11067	49	553	4294	4896	61	225	544	1067	1897	65	280	790	1135
2020	36	428	2773	6531	9768	38	471	3391	3900	49	196	486	1035	1766	55	244	678	977

¹ From 2013 onwards, regional boundaries have been adjusted to the new ABS Greater Adelaide Statistical Division - For more information please look at *Preface* and *Definitions & Explanatory Notes*.

Note:

Changes were made to the Property Damage Only (PDO) definition in 1998, 2003, 2013, 2016 and 2017. Refer to **Scope**, page 5 for full details.

Road Crashes in 2020

- Time Distribution
- Crash Types
- Definition for Coding Accidents
- Crash Location
- Top Intersections
- Motor Vehicle Types
- Involvement and Responsibility
- Speed

Table 8: Crashes and Casualties during Holiday Periods by Severity

Period	Crashes					Casualties			
	Fatal Crashes	Serious Injury Crashes	Minor Injury Crashes	Property Damage Crashes	ALL CRASHES	Fatalities	Serious Injuries	Minor Injuries	ALL CASUALTIES
New Year (1 January) (1 Day)	1	1	6	7	15	1	1	6	8
Australia Day Weekend (26 January - 28 January) (3 Days)	0	3	29	60	92	0	3	34	37
Adelaide Cup (7 March - 9 March) (3 Days)	2	6	24	42	74	2	7	40	49
Easter (10 April - 13 April) (4 Days)	1	5	11	41	58	1	5	16	22
Anzac Day (25 April) (1 Day)	1	3	10	20	34	2	4	11	17
Queen's Birthday (6 June - 8 June) (3 Days)	0	6	14	42	62	0	6	16	22
Labour Day (3 October - 5 October) (3 Days)	1	4	20	56	81	1	4	25	30
Christmas Period (19 December - 28 December) (10 Days)	4	20	79	194	297	4	23	109	136
SCHOOL HOLIDAYS									
January (1 January - 27 January) (27 Days)	6	46	228	496	776	7	57	313	377
April (10 April - 26 April) (17 Days)	4	25	105	238	372	5	26	119	150
July (4 July - 19 July) (16 Days)	6	26	125	327	484	6	35	148	189
September (26 September - 11 October) (16 Days)	3	27	157	325	512	3	28	198	229
December (12 December - 31 December) (20 Days)	6	41	162	395	604	6	45	221	272

Table 9a: Casualty Crashes by Time of Day, Day of Week

Time Period	Day of Week							TOTAL
	Monday	Tuesday	Wednesday	Thursday	Friday	Saturday	Sunday	
00:00 - 01:59	2	1	4	8	10	17	16	58
02:00 - 03:59	3	8	4	6	3	11	13	48
04:00 - 05:59	6	12	7	14	7	6	7	59
06:00 - 07:59	40	68	47	38	28	15	7	243
08:00 - 09:59	70	101	99	87	74	44	32	507
10:00 - 11:59	73	57	59	58	67	76	69	459
12:00 - 13:59	57	68	59	73	73	74	91	495
14:00 - 15:59	97	107	115	113	134	80	69	715
16:00 - 17:59	90	123	113	113	117	76	65	697
18:00 - 19:59	40	46	66	64	58	49	34	357
20:00 - 21:59	26	27	28	32	34	35	21	203
22:00 - 23:59	8	20	15	20	26	26	12	127
TOTAL	512	638	616	626	631	509	436	3968

Figure 3: Casualty Crashes by Time of Day, Day of Week

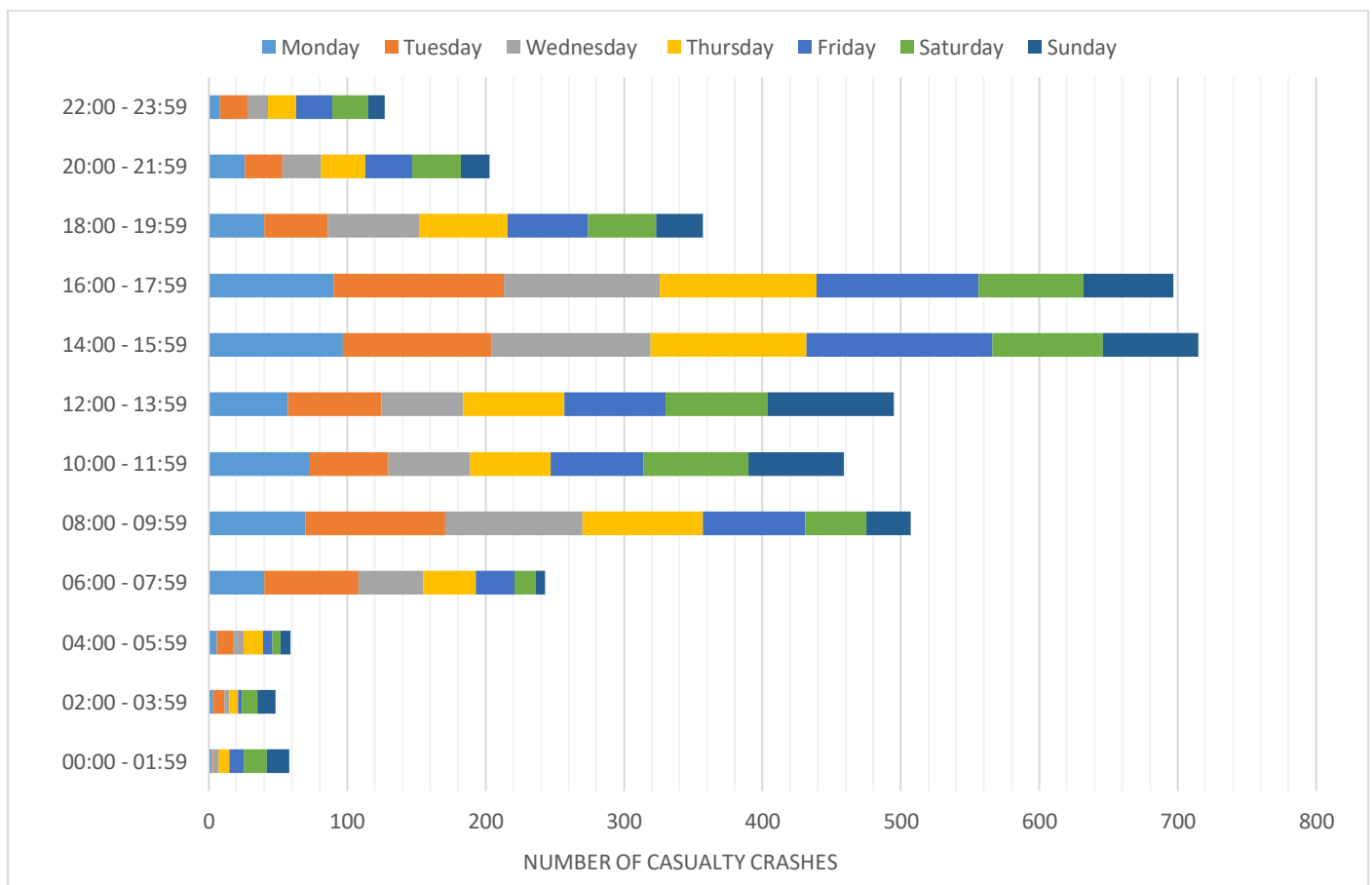


Table 9b: Casualties by Time of Day, Day of Week

Time Period	Day of Week							TOTAL
	Monday	Tuesday	Wednesday	Thursday	Friday	Saturday	Sunday	
00:00 - 01:59	2	1	5	9	15	26	21	79
02:00 - 03:59	5	14	4	7	3	12	18	63
04:00 - 05:59	7	14	10	17	8	7	10	73
06:00 - 07:59	43	74	55	39	35	18	8	272
08:00 - 09:59	85	129	110	110	78	60	40	612
10:00 - 11:59	91	66	78	70	84	92	79	560
12:00 - 13:59	73	91	71	82	87	111	106	621
14:00 - 15:59	122	125	135	147	162	116	87	894
16:00 - 17:59	106	136	149	130	151	93	80	845
18:00 - 19:59	50	56	79	79	74	67	44	449
20:00 - 21:59	26	31	37	34	44	47	31	250
22:00 - 23:59	12	24	21	26	30	34	12	159
TOTAL	622	761	754	750	771	683	536	4877

Table 9c: All Crashes by Time of Day, Day of Week

Time Period	Day of Week							TOTAL
	Monday	Tuesday	Wednesday	Thursday	Friday	Saturday	Sunday	
00:00 - 01:59	15	9	22	30	24	57	66	223
02:00 - 03:59	14	15	18	22	22	30	59	180
04:00 - 05:59	24	27	25	29	27	22	21	175
06:00 - 07:59	131	170	145	124	100	46	47	763
08:00 - 09:59	234	274	299	254	234	114	73	1482
10:00 - 11:59	190	169	188	187	196	198	158	1286
12:00 - 13:59	168	174	205	208	219	231	194	1399
14:00 - 15:59	291	302	334	312	346	174	167	1926
16:00 - 17:59	287	350	334	358	346	193	147	2015
18:00 - 19:59	114	126	183	157	203	137	117	1037
20:00 - 21:59	70	75	89	93	103	95	82	607
22:00 - 23:59	38	54	57	59	85	103	45	441
TOTAL	1576	1745	1899	1833	1905	1400	1176	11534

Table 10: Crashes and Casualties by Month of Year and Severity

Month	Crashes				ALL CRASHES	Casualties			
	Fatal Crashes	Serious Injury Crashes	Minor Injury Crashes	Property Damage Crashes		Fatalities	Serious Injuries	Minor Injuries	ALL CASUALTIES
January	7	49	269	613	938	8	61	365	434
February	7	70	346	698	1121	8	74	421	503
March	14	60	251	579	904	14	72	320	406
April	6	39	182	436	663	7	40	217	264
May	5	35	248	571	859	7	43	300	350
June	2	42	257	595	896	2	47	306	355
July	10	49	295	676	1030	10	63	348	421
August	4	42	254	714	1014	5	49	320	374
September	3	48	292	728	1071	3	52	356	411
October	7	55	293	683	1038	7	58	361	426
November	12	66	287	624	989	14	79	368	461
December	8	69	285	649	1011	8	77	387	472
TOTAL	85	624	3259	7566	11534	93	715	4069	4877

Table 11a: Crashes and Casualties by Crash Type and Severity:
Metropolitan Adelaide

	Crashes					Casualties			
	Fatal Crashes	Serious Injury Crashes	Minor Injury Crashes	Property Damage Crashes	ALL CRASHES	Fatalities	Serious Injuries	Minor Injuries	ALL CASUALTIES
MULTI VEHICLE									
Head On	4	26	45	84	159	4	38	82	124
Rear End	2	29	890	1759	2680	2	31	1080	1113
Side Swipe	1	28	180	856	1065	1	30	193	224
Right Angle	6	79	630	1228	1943	7	93	800	900
Right Turn	2	57	288	534	881	3	61	404	468
Hit Parked Vehicle	0	12	136	671	819	0	12	152	164
Sub-total	15	231	2169	5132	7547	17	265	2711	2993
SINGLE VEHICLE									
Hit Fixed Object	12	86	327	1047	1472	12	94	389	495
Hit Pedestrian	3	46	127	97	273	3	47	130	180
Hit Animal	0	4	7	42	53	0	4	8	12
Hit Object on Road	0	2	5	27	34	0	2	5	7
Roll Over	5	56	114	85	260	5	56	120	181
Left Road Out of Control	0	1	14	54	69	0	1	17	18
Other	1	2	10	47	60	1	2	11	14
Sub -total	21	197	604	1399	2221	21	206	680	907
TOTAL	36	428	2773	6531	9768	38	471	3391	3900

Table 11b: Crashes and Casualties by Crash Type and Severity:
Rural

	Crashes					Casualties			
	Fatal Crashes	Serious Injury Crashes	Minor Injury Crashes	Property Damage Crashes	ALL CRASHES	Fatalities	Serious Injuries	Minor Injuries	ALL CASUALTIES
MULTI VEHICLE									
Head On	9	12	12	20	53	13	26	29	68
Rear End	3	8	38	99	148	3	11	57	71
Side Swipe	3	8	17	65	93	4	11	25	40
Right Angle	3	25	74	164	266	3	34	132	169
Right Turn	0	6	19	28	53	0	6	30	36
Hit Parked Vehicle	1	2	17	60	80	1	4	18	23
Sub-total	19	61	177	436	693	24	92	291	407
SINGLE VEHICLE									
Hit Fixed Object	12	62	146	306	526	12	70	178	260
Hit Pedestrian	4	7	22	18	51	5	7	23	35
Hit Animal	1	3	14	87	105	1	3	17	21
Hit Object on Road	0	1	2	9	12	0	1	2	3
Roll Over	10	59	109	127	305	10	67	149	226
Left Road Out of Control	0	3	12	30	45	0	4	13	17
Other	3	0	4	22	29	3	0	5	8
Sub -total	30	135	309	599	1073	31	152	387	570
TOTAL	49	196	486	1035	1766	55	244	678	977

Table 11c: Crashes and Casualties by Crash Type and Severity:
South Australia

	Crashes				Casualties				
	Fatal Crashes	Serious Injury Crashes	Minor Injury Crashes	Property Damage Crashes	ALL CRASHES	Fatalities	Serious Injuries	Minor Injuries	ALL CASUALTIES
MULTI VEHICLE									
Head On	13	38	57	104	212	17	64	111	192
Rear End	5	37	928	1858	2828	5	42	1137	1184
Side Swipe	4	36	197	921	1158	5	41	218	264
Right Angle	9	104	704	1392	2209	10	127	932	1069
Right Turn	2	63	307	562	934	3	67	434	504
Hit Parked Vehicle	1	14	153	731	899	1	16	170	187
Sub-total	34	292	2346	5568	8240	41	357	3002	3400
SINGLE VEHICLE									
Hit Fixed Object	24	148	473	1353	1998	24	164	567	755
Hit Pedestrian	7	53	149	115	324	8	54	153	215
Hit Animal	1	7	21	129	158	1	7	25	33
Hit Object on Road	0	3	7	36	46	0	3	7	10
Roll Over	15	115	223	212	565	15	123	269	407
Left Road Out of Control	0	4	26	84	114	0	5	30	35
Other	4	2	14	69	89	4	2	16	22
Sub -total	51	332	913	1998	3294	52	358	1067	1477
TOTAL	85	624	3259	7566	11534	93	715	4069	4877

Table 12: Hit Fixed Object Crashes by Object First Hit and Severity

Type of Fixed Object	Fatal Crashes	Serious Injury Crashes	Minor Injury Crashes	Property Damage Crashes	ALL CRASHES
Tree	16	71	194	366	647
Traffic Signal Pole	0	3	10	38	51
Pole - not Stobie	0	2	16	98	116
Bridge	0	1	1	5	7
Sign Post	1	8	23	71	103
Stobie Pole	2	8	64	157	231
Other Fixed Obstruction	4	35	125	501	665
Guard Rail	1	20	34	93	148
Wire Rope barrier	0	0	6	24	30
TOTAL	24	148	473	1353	1998

Table 13: Single Vehicle Crashes by Motor Vehicle Type and Severity

Type of Vehicle	Fatal Crashes	Serious Injury Crashes	Minor Injury Crashes	Property Damage Crashes	ALL CRASHES
Passenger Vehicle	40	197	703	1761	2701
Light Truck (≤ 4.5 tonnes)	0	1	2	9	12
Heavy Vehicle	2	9	19	146	176
Buses	0	0	1	11	12
Motorcycles	8	98	140	60	306
Bicycles	1	25	47	8	81
Other	0	2	1	3	6
TOTAL	51	332	913	1998	3294

Figure 4: Definition for Coding Accidents (DCA)¹

<p>Pedestrian on foot in toy/pram</p> <p>100 NEAR SIDE A Xⁿ C A B M/B C</p>	<p>Vehicles from adjacent directions (intersections only)</p> <p>110 CROSS TRAFFIC A B Xⁿ M/B N</p>	<p>Vehicles from opposing directions</p> <p>120 HEAD ON (NOT OVERTAKING) A - Wrong side B - other Xⁿ M/B N</p>	<p>Vehicles from same direction</p> <p>130 VEHICLES IN SAME DIRECTION A B Xⁿ N/A N M/B N</p>	<p>Manoeuvring</p> <p>140 U TURN A B P M U Q Y</p>	<p>Overtaking</p> <p>150 HEAD ON (INCL. SIDE SWIPE) A B Q Y</p>	<p>On path</p> <p>160 PARKED A B R</p>	<p>Off path on straight</p> <p>170 OFF CARRIAGEWAY TOILET A B V</p>	<p>Off path on curve</p> <p>180 OFF CARRIAGEWAY RIGHT BEND A B V W</p>	<p>Passenger and miscellaneous</p> <p>190 FELL IN/FROM VEHICLE A X</p>
<p>101</p> <p>101 NEAR SIDE A Xⁿ A B C D M/B D</p>	<p>111</p> <p>111 RIGHT/FAR A B Xⁿ M/B N</p>	<p>121</p> <p>121 RIGHT THRU A B Xⁿ M/B N</p>	<p>131</p> <p>131 LEFT REAR A B Xⁿ N/A I M/B N</p>	<p>141</p> <p>141 U TURN INTO FINED OBJECT/PARKED VEHICLE A B Q Y</p>	<p>151</p> <p>151 OUT OF CONTROL A B B I2 N U</p>	<p>161</p> <p>161 DOUBLE PARKED A B R</p>	<p>171</p> <p>171 LEFT OFF CARRIAGEWAY INTO OFF-PARKED VEHICLE A B V</p>	<p>181</p> <p>181 OFF RIGHT BEND INTO OBJECT/PARKED VEHICLE A B V W</p>	<p>191</p> <p>191 LOAD OR MISSILE FROM STRUCK VEHICLE A X</p>
<p>102</p> <p>102 NEAR SIDE A Xⁿ A B C D M/B C D</p>	<p>112</p> <p>112 LEFT/FAR A B Xⁿ M/B N</p>	<p>122</p> <p>122 LEFT THRU A B Xⁿ M/B N</p>	<p>132</p> <p>132 RIGHT END A B Xⁿ N/A I M/B N</p>	<p>142</p> <p>142 LEAVING/PARKING A B R</p>	<p>152</p> <p>152 PULLING OUT A B U</p>	<p>162</p> <p>162 ACCIDENT OR BROKEN DOWN A B R</p>	<p>172</p> <p>172 OFF CARRIAGEWAY TO RIGHT A B V</p>	<p>182</p> <p>182 OFF CARRIAGEWAY LEFT BEND A B V W</p>	<p>192</p> <p>192 STRUCK TRAIN A X</p>
<p>103</p> <p>103 NEAR SIDE A E</p>	<p>113</p> <p>113 RIGHT NEAR A B Xⁿ M/B N</p>	<p>123</p> <p>123 RIGHT/LEFT A B Xⁿ M/B N</p>	<p>133</p> <p>133 LANE SIDE SWIPE A B O</p>	<p>143</p> <p>143 ENTERING/PARKING A B R</p>	<p>153</p> <p>153 CUTTING IN A B U</p>	<p>163</p> <p>163 VEHICLE DOOR A B R</p>	<p>173</p> <p>173 RIGHT OFF CARRIAGEWAY INTO OBJECT/PARKED VEHICLE A B V Q</p>	<p>183</p> <p>183 OFF LEFT BEND INTO OBJECT/PARKED VEHICLE A B V Q W Y</p>	<p>193</p> <p>193 STRUCK RAILWAY CROSSING FURNITURE A V Q</p>
<p>104</p> <p>104 NEAR SIDE A F</p>	<p>114</p> <p>114 TWO RIGHT TURNING A B Xⁿ M/B N</p>	<p>124</p> <p>124 RIGHT/RIGHT A B Xⁿ M/B N</p>	<p>134</p> <p>134 LANE CHANGE RIGHT (OUT OF STRIKING) A B O</p>	<p>144</p> <p>144 PARKING VEHICLES ONLY A B R</p>	<p>154</p> <p>154 PULLING OUT - REAR END A B U</p>	<p>164</p> <p>164 REMANENT OBSTRUCTION ON CARRIAGEWAY A B Q</p>	<p>174</p> <p>174 OUT OF CONTROL ON CARRIAGEWAY A B V</p>	<p>184</p> <p>184 OUT OF CONTROL ON CARRIAGEWAY A B V</p>	<p>194</p> <p>194 PARKED CAR RUN AWAY A V Q</p>
<p>105</p> <p>105 NEAR SIDE A B F</p>	<p>115</p> <p>115 RIGHT/LEFT FAR A B Xⁿ M/B N</p>	<p>125</p> <p>125 LEFT/LEFT A B Xⁿ M/B N</p>	<p>135</p> <p>135 LANE CHANGE LEFT A B Xⁿ N I</p>	<p>145</p> <p>145 REVERSING A B Q Y</p>	<p>155</p> <p>155 OFF END OF ROAD/T INTERSECTION A B V Q Y</p>	<p>165</p> <p>165 TEMPORARY ROADWORKS A B Q</p>	<p>175</p> <p>175 OFF END OF ROAD/T INTERSECTION A B V Q Y</p>	<p>185</p> <p>185 OFF CARRIAGEWAY UNKNOWN SIDE A B V Q Y</p>	<p>195</p> <p>195 DENSEST AND TREE/POST A B X</p>
<p>106</p> <p>106 NEAR SIDE A B G</p>	<p>116</p> <p>116 LEFT NEAR A B Xⁿ M/B N</p>	<p>126</p> <p>126 RIGHT TURN SIDE SWIPE A B Xⁿ M/B N</p>	<p>136</p> <p>136 RIGHT TURN SIDE SWIPE A B Xⁿ N I</p>	<p>146</p> <p>146 REVERSING INTO FINED OBJECT/VEHICLE INCLUDES DRIVEWAYS A B Q Y</p>	<p>176</p> <p>176 OFF CARRIAGEWAY UNKNOWN SIDE A B V Q Y</p>	<p>166</p> <p>166 STRUCK OBJECT ON CARRIAGEWAY A B Q</p>	<p>176</p> <p>176 OFF CARRIAGEWAY UNKNOWN SIDE A B V Q Y</p>	<p>186</p> <p>186 ANIMAL (NOT RIDGEM) A B Q</p>	<p>196</p> <p>196 UNKNOWN A B X</p>
<p>107</p> <p>107 NEAR SIDE A B F H I</p>	<p>117</p> <p>117 RIGHT/LEFT NEAR A B Xⁿ M/B N</p>	<p>127</p> <p>127 LEFT TURN SIDE SWIPE A B Xⁿ M/B N</p>	<p>137</p> <p>137 LEFT TURN SIDE SWIPE A B Xⁿ N I</p>	<p>147</p> <p>147 EMERGING FROM DRIVEWAY/LANE A B Q Y</p>	<p>177</p> <p>177 OFF CARRIAGEWAY UNKNOWN SIDE A B V Q Y</p>	<p>167</p> <p>167 ANIMAL (NOT RIDGEM) A B Q</p>	<p>177</p> <p>177 OFF CARRIAGEWAY UNKNOWN SIDE A B V Q Y</p>	<p>187</p> <p>187 OTHER STRAIGHT A B V Q W</p>	<p>197</p> <p>197 UNKNOWN A B X</p>
<p>108</p> <p>108 NEAR SIDE A B J D</p>	<p>118</p> <p>118 TWO LEFT TURN A B Xⁿ M/B N</p>	<p>128</p> <p>128 OTHER CROSSING A B Xⁿ M/B N</p>	<p>138</p> <p>138 FROM FOOTWAY A B K</p>	<p>148</p> <p>148 OTHER MANOEUVRING A B Q Y</p>	<p>178</p> <p>178 OTHER STRAIGHT A B V Q W</p>	<p>168</p> <p>168 OTHER ON PATH A B Q Y</p>	<p>178</p> <p>178 OTHER STRAIGHT A B V Q W</p>	<p>188</p> <p>188 OTHER CURVE A B V Q W</p>	<p>198</p> <p>198 UNKNOWN A B X</p>
<p>109</p> <p>109 NEAR SIDE A B J D</p>	<p>119</p> <p>119 OTHER ADJACENT A B Xⁿ M/B N</p>	<p>129</p> <p>129 OTHER CROSSING A B Xⁿ M/B N</p>	<p>139</p> <p>139 OTHER SAME DIRECTION A B Xⁿ M/B N</p>	<p>149</p> <p>149 OTHER MANOEUVRING A B Q Y</p>	<p>179</p> <p>179 OTHER STRAIGHT A B V Q W</p>	<p>169</p> <p>169 OTHER ON PATH A B Q Y</p>	<p>179</p> <p>179 OTHER STRAIGHT A B V Q W</p>	<p>189</p> <p>189 OTHER CURVE A B V Q W</p>	<p>199</p> <p>199 UNKNOWN A B X</p>

¹ Definition for Coding Accidents – For more information please see Preface and Definitions & Explanatory Notes.

Table 14a: Crashes and Casualties by Crash Code Type: Metro Adelaide

Crash Code Type (DCA) ¹	Crashes				Casualties				
	Fatal Crashes	Serious Injury Crashes	Minor Injury Crashes	Property Damage Crashes	ALL CRASHES	Fatalities	Serious Injuries	Minor Injuries	ALL CASUALTIES
PEDESTRIANS									
100	0	24	55	39	118	0	25	56	81
101	0	2	0	2	4	0	2	0	2
102	1	10	34	22	67	1	10	36	47
103	1	2	5	9	17	1	2	7	10
104	0	1	1	3	5	0	1	1	2
105	0	0	1	2	3	0	0	1	1
106	0	1	3	2	6	0	1	3	4
107	1	3	15	8	27	1	3	15	19
108	0	0	1	1	2	0	0	1	1
109	0	5	12	10	27	0	5	12	17
Sub-total	3	48	127	98	276	3	49	132	184
ADJ DIRECTIONS									
110	3	30	187	273	493	4	39	257	300
111	0	0	38	132	170	0	0	46	46
112	0	1	4	12	17	0	1	8	9
113	2	29	193	395	619	2	29	258	289
114	0	1	14	25	40	0	1	14	15
115	0	0	4	16	20	0	0	4	4
116	0	6	58	119	183	0	11	62	73
117	0	0	0	0	0	0	0	0	0
118	0	0	2	1	3	0	0	2	2
119	1	0	2	19	22	1	0	4	5
Sub-total	6	67	502	992	1567	7	81	655	743
OPP DIRECTIONS									
120	4	27	47	84	162	4	39	86	129
121	2	54	276	523	855	3	58	392	453
122	0	0	0	0	0	0	0	0	0
123	0	1	4	7	12	0	1	7	8
124	0	0	4	2	6	0	0	5	5
125	0	0	0	0	0	0	0	0	0
129	0	0	1	0	1	0	0	1	1
Sub-total	6	82	332	616	1036	7	98	491	596
SAME DIRECTION									
130	1	22	686	1407	2116	1	24	842	867
131	0	2	83	134	219	0	2	94	96
132	1	2	115	169	287	1	2	135	138
133	0	4	12	144	160	0	4	12	16
134	1	4	31	186	222	1	4	35	40
135	0	3	37	214	254	0	4	41	45
136	0	2	10	42	54	0	2	10	12
137	0	2	35	61	98	0	2	35	37
139	0	2	1	5	8	0	3	2	5
Sub-total	3	43	1010	2362	3418	3	47	1206	1256
MANOEUVERING									
140	0	6	37	119	162	0	6	40	46
141	0	0	6	18	24	0	0	7	7
142	0	1	15	45	61	0	1	15	16
143	0	1	3	9	13	0	1	3	4
144	0	0	0	31	31	0	0	0	0
145	0	0	6	42	48	0	0	6	6

¹ Crash Code Type (DCA) - Refer to Figure 4

Table 14a: Crashes and Casualties by Crash Code Type: Metro Adelaide (cont.)

Crash Code Type (DCA) ¹	Crashes				Casualties				
	Fatal Crashes	Serious Injury Crashes	Minor Injury Crashes	Property Damage Crashes	ALL CRASHES	Fatalities	Serious Injuries	Minor Injuries	ALL CASUALTIES
146	0	2	6	46	54	0	2	6	8
147	0	6	71	166	243	0	6	83	89
148	0	6	42	40	88	0	6	44	50
149	1	6	12	31	50	1	6	12	19
Sub-total	1	28	198	547	774	1	28	216	245
OVERTAKING									
150	0	1	0	2	3	0	1	0	1
151	0	0	3	2	5	0	0	3	3
152	0	3	5	22	30	0	3	6	9
153	0	0	0	6	6	0	0	0	0
154	0	0	1	5	6	0	0	2	2
159	0	6	9	36	51	0	6	9	15
Sub-total	0	10	18	73	101	0	10	20	30
ON PATH									
160	1	10	102	473	586	1	10	115	126
161	0	0	0	0	0	0	0	0	0
162	0	0	1	2	3	0	0	1	1
163	0	1	16	19	36	0	1	16	17
164	0	1	2	19	22	0	1	2	3
165	0	0	0	3	3	0	0	0	0
166	0	2	6	22	30	0	2	6	8
167	0	4	7	42	53	0	4	8	12
169	0	0	15	84	99	0	0	18	18
Sub-total	1	18	149	664	832	1	18	166	185
OFF PATH, STRAIGHT									
170	0	0	11	25	36	0	0	12	12
171	5	22	105	407	539	5	24	123	152
172	0	0	2	10	12	0	0	2	2
173	2	17	59	179	257	2	19	69	90
174	2	28	65	39	134	2	28	66	96
175	0	2	10	24	36	0	2	18	20
176	0	8	28	71	107	0	9	28	37
179	0	1	5	7	13	0	1	5	6
Sub-total	9	78	285	762	1134	9	83	323	415
OFF PATH, CURVE									
180	0	4	9	24	37	0	4	12	16
181	3	19	58	159	239	3	20	68	91
182	0	3	8	9	20	0	3	8	11
183	2	18	47	142	209	2	20	63	85
184	0	9	19	9	37	0	9	19	28
189	0	0	0	4	4	0	0	0	0
Sub-total	5	53	141	347	546	5	56	170	231
MISCELLANEOUS									
190	1	0	4	0	5	1	0	4	5
191	1	0	4	29	34	1	0	5	6
192	0	0	1	5	6	0	0	1	1
193	0	0	0	3	3	0	0	0	0
194	0	0	1	19	20	0	0	1	1
199	0	1	1	14	16	0	1	1	2
Sub-total	2	1	11	70	84	2	1	12	15
TOTAL	36	428	2773	6531	9768	38	471	3391	3900

¹ Crash Code Type (DCA) - Refer to Figure 4

Table 14b: Crashes and Casualties by Crash Code Type: Rural

Crash Code Type (DCA) ¹	Crashes					Casualties			
	Fatal Crashes	Serious Injury Crashes	Minor Injury Crashes	Property Damage Crashes	ALL CRASHES	Fatalities	Serious Injuries	Minor Injuries	ALL CASUALTIES
PEDESTRIANS									
100	0	1	4	9	14	0	1	4	5
101	0	0	2	0	2	0	0	2	2
102	1	0	2	3	6	1	0	2	3
103	2	1	0	1	4	2	1	0	3
104	0	1	0	0	1	0	1	0	1
105	0	1	0	1	2	0	1	1	2
106	1	0	2	0	3	2	0	2	4
107	0	0	4	2	6	0	0	4	4
108	0	0	1	1	2	0	0	1	1
109	0	1	7	1	9	0	1	7	8
Sub-total	4	5	22	18	49	5	5	23	33
ADJ DIRECTIONS									
110	0	12	43	57	112	0	16	75	91
111	0	0	5	17	22	0	0	6	6
112	0	0	1	2	3	0	0	2	2
113	2	7	12	34	55	2	12	28	42
114	0	0	1	7	8	0	0	1	1
115	0	0	0	3	3	0	0	0	0
116	0	1	3	13	17	0	1	5	6
117	0	0	0	0	0	0	0	0	0
118	0	0	0	0	0	0	0	0	0
119	0	0	0	1	1	0	0	0	0
Sub-total	2	20	65	134	221	2	29	117	148
OPP DIRECTIONS									
120	8	8	12	20	48	11	19	24	54
121	0	6	17	25	48	0	6	26	32
122	0	0	0	0	0	0	0	0	0
123	0	0	0	1	1	0	0	0	0
124	0	0	0	0	0	0	0	0	0
125	0	0	0	0	0	0	0	0	0
129	1	0	0	1	2	1	0	1	2
Sub-total	9	14	29	47	99	12	25	51	88
SAME DIRECTION									
130	3	6	20	48	77	3	8	35	46
131	0	0	5	9	14	0	0	6	6
132	0	2	12	31	45	0	3	15	18
133	1	2	2	4	9	2	2	2	6
134	0	0	0	4	4	0	0	0	0
135	0	0	1	3	4	0	0	1	1
136	1	0	1	1	3	1	3	1	5
137	0	0	0	5	5	0	0	0	0
139	0	0	0	0	0	0	0	0	0
Sub-total	5	10	41	105	161	6	16	60	82
MANOEUVERING									
140	1	3	6	19	29	1	3	15	19
141	0	0	1	2	3	0	0	1	1
142	0	0	2	6	8	0	0	5	5
143	0	0	0	0	0	0	0	0	0
144	0	0	0	4	4	0	0	0	0
145	0	0	1	9	10	0	0	1	1

¹ Crash Code Type (DCA) - Refer to Figure 4

Table 14b: Crashes and Casualties by Crash Code Type: Rural (cont.)

Crash Code Type (DCA) ¹	Crashes					Casualties			
	Fatal Crashes	Serious Injury Crashes	Minor Injury Crashes	Property Damage Crashes	ALL CRASHES	Fatalities	Serious Injuries	Minor Injuries	ALL CASUALTIES
146	0	0	1	4	5	0	0	1	1
147	0	3	6	24	33	0	3	7	10
148	0	2	1	5	8	0	2	1	3
149	0	1	5	9	15	0	1	8	9
Sub-total	1	9	23	82	115	1	9	39	49
OVERTAKING									
150	1	4	0	0	5	2	7	5	14
151	2	0	3	2	7	2	0	5	7
152	0	2	4	15	21	0	2	6	8
153	0	0	0	2	2	0	0	0	0
154	0	0	0	2	2	0	0	0	0
159	0	1	3	8	12	0	1	3	4
Sub-total	3	7	10	29	49	4	10	19	33
ON PATH									
160	1	1	14	45	61	1	3	14	18
161	0	0	0	0	0	0	0	0	0
162	0	0	2	0	2	0	0	4	4
163	0	0	0	3	3	0	0	0	0
164	0	1	0	5	6	0	1	0	1
165	0	0	0	0	0	0	0	0	0
166	0	1	2	8	11	0	1	2	3
167	1	3	13	87	104	1	3	15	19
169	0	1	2	4	7	0	1	2	3
Sub-total	2	7	33	152	194	2	9	37	48
OFF PATH, STRAIGHT									
170	1	1	12	20	34	1	1	19	21
171	6	9	25	80	120	6	12	32	50
172	0	4	10	7	21	0	5	13	18
173	2	10	26	56	94	2	12	28	42
174	1	17	28	31	77	1	19	35	55
175	0	3	5	16	24	0	3	6	9
176	0	22	34	69	125	0	24	41	65
179	0	0	0	1	1	0	0	0	0
Sub-total	10	66	140	280	496	10	76	174	260
OFF PATH, CURVE									
180	2	8	15	21	46	2	10	16	28
181	4	23	44	56	127	4	25	58	87
182	0	6	9	12	27	0	7	16	23
183	2	14	33	51	100	2	16	43	61
184	2	5	19	22	48	2	5	22	29
189	0	0	0	0	0	0	0	0	0
Sub-total	10	56	120	162	348	10	63	155	228
MISCELLANEOUS									
190	1	0	0	0	1	1	0	0	1
191	0	0	1	8	9	0	0	1	1
192	1	0	0	0	1	1	0	0	1
193	0	0	0	0	0	0	0	0	0
194	0	2	0	2	4	0	2	0	2
199	1	0	2	16	19	1	0	2	3
Sub-total	3	2	3	26	34	3	2	3	8
TOTAL	49	196	486	1035	1766	55	244	678	977

¹ Crash Code Type (DCA) - Refer to Figure 4

Table 14c: Crashes and Casualties by Crash Code Type: South Australia

Crash Code Type (DCA) ¹	Crashes				Casualties				
	Fatal Crashes	Serious Injury Crashes	Minor Injury Crashes	Property Damage Crashes	ALL CRASHES	Fatalities	Serious Injuries	Minor Injuries	ALL CASUALTIES
PEDESTRIANS									
100	0	25	59	48	132	0	26	60	86
101	0	2	2	2	6	0	2	2	4
102	2	10	36	25	73	2	10	38	50
103	3	3	5	10	21	3	3	7	13
104	0	2	1	3	6	0	2	1	3
105	0	1	1	3	5	0	1	2	3
106	1	1	5	2	9	2	1	5	8
107	1	3	19	10	33	1	3	19	23
108	0	0	2	2	4	0	0	2	2
109	0	6	19	11	36	0	6	19	25
Sub-total	7	53	149	116	325	8	54	155	217
ADJ DIRECTIONS									
110	3	42	230	330	605	4	55	332	391
111	0	0	43	149	192	0	0	52	52
112	0	1	5	14	20	0	1	10	11
113	4	36	205	429	674	4	41	286	331
114	0	1	15	32	48	0	1	15	16
115	0	0	4	19	23	0	0	4	4
116	0	7	61	132	200	0	12	67	79
117	0	0	0	0	0	0	0	0	0
118	0	0	2	1	3	0	0	2	2
119	1	0	2	20	23	1	0	4	5
Sub-total	8	87	567	1126	1788	9	110	772	891
OPP DIRECTIONS									
120	12	35	59	104	210	15	58	110	183
121	2	60	293	548	903	3	64	418	485
122	0	0	0	0	0	0	0	0	0
123	0	1	4	8	13	0	1	7	8
124	0	0	4	2	6	0	0	5	5
125	0	0	0	0	0	0	0	0	0
129	1	0	1	1	3	1	0	2	3
Sub-total	15	96	361	663	1135	19	123	542	684
SAME DIRECTION									
130	4	28	706	1455	2193	4	32	877	913
131	0	2	88	143	233	0	2	100	102
132	1	4	127	200	332	1	5	150	156
133	1	6	14	148	169	2	6	14	22
134	1	4	31	190	226	1	4	35	40
135	0	3	38	217	258	0	4	42	46
136	1	2	11	43	57	1	5	11	17
137	0	2	35	66	103	0	2	35	37
139	0	2	1	5	8	0	3	2	5
Sub-total	8	53	1051	2467	3579	9	63	1266	1338
MANOEUVERING									
140	1	9	43	138	191	1	9	55	65
141	0	0	7	20	27	0	0	8	8
142	0	1	17	51	69	0	1	20	21
143	0	1	3	9	13	0	1	3	4
144	0	0	0	35	35	0	0	0	0
145	0	0	7	51	58	0	0	7	7

¹ Crash Code Type (DCA) - Refer to Figure 4

Table 14c: Crashes and Casualties by Crash Code Type: South Australia (cont.)

Crash Code Type (DCA) ¹	Crashes				Casualties				
	Fatal Crashes	Serious Injury Crashes	Minor Injury Crashes	Property Damage Crashes	ALL CRASHES	Fatalities	Serious Injuries	Minor Injuries	ALL CASUALTIES
146	0	2	7	50	59	0	2	7	9
147	0	9	77	190	276	0	9	90	99
148	0	8	43	45	96	0	8	45	53
149	1	7	17	40	65	1	7	20	28
Sub-total	2	37	221	629	889	2	37	255	294
OVERTAKING									
150	1	5	0	2	8	2	8	5	15
151	2	0	6	4	12	2	0	8	10
152	0	5	9	37	51	0	5	12	17
153	0	0	0	8	8	0	0	0	0
154	0	0	1	7	8	0	0	2	2
159	0	7	12	44	63	0	7	12	19
Sub-total	3	17	28	102	150	4	20	39	63
ON PATH									
160	2	11	116	518	647	2	13	129	144
161	0	0	0	0	0	0	0	0	0
162	0	0	3	2	5	0	0	5	5
163	0	1	16	22	39	0	1	16	17
164	0	2	2	24	28	0	2	2	4
165	0	0	0	3	3	0	0	0	0
166	0	3	8	30	41	0	3	8	11
167	1	7	20	129	157	1	7	23	31
169	0	1	17	88	106	0	1	20	21
Sub-total	3	25	182	816	1026	3	27	203	233
OFF PATH, STRAIGHT									
170	1	1	23	45	70	1	1	31	33
171	11	31	130	487	659	11	36	155	202
172	0	4	12	17	33	0	5	15	20
173	4	27	85	235	351	4	31	97	132
174	3	45	93	70	211	3	47	101	151
175	0	5	15	40	60	0	5	24	29
176	0	30	62	140	232	0	33	69	102
179	0	1	5	8	14	0	1	5	6
Sub-total	19	144	425	1042	1630	19	159	497	675
OFF PATH, CURVE									
180	2	12	24	45	83	2	14	28	44
181	7	42	102	215	366	7	45	126	178
182	0	9	17	21	47	0	10	24	34
183	4	32	80	193	309	4	36	106	146
184	2	14	38	31	85	2	14	41	57
189	0	0	0	4	4	0	0	0	0
Sub-total	15	109	261	509	894	15	119	325	459
MISCELLANEOUS									
190	2	0	4	0	6	2	0	4	6
191	1	0	5	37	43	1	0	6	7
192	1	0	1	5	7	1	0	1	2
193	0	0	0	3	3	0	0	0	0
194	0	2	1	21	24	0	2	1	3
199	1	1	3	30	35	1	1	3	5
Sub-total	5	3	14	96	118	5	3	15	23
TOTAL	85	624	3259	7566	11534	93	715	4069	4877

¹ Crash Code Type (DCA) - Refer to Figure 4

Table 15a: Crashes and Casualties by Location Type and Severity:
Metropolitan Adelaide

Location Type	Crashes					Casualties			
	Fatal Crashes	Serious Injury Crashes	Minor Injury Crashes	Property Damage Crashes	ALL CRASHES	Fatalities	Serious Injuries	Minor Injuries	ALL CASUALTIES
INTERSECTION									
Interchange	0	0	3	5	8	0	0	3	3
Cross Road	4	77	682	1361	2124	6	89	858	953
Y-Junction	0	0	1	7	8	0	0	1	1
T-Junction	5	100	737	1557	2399	5	108	923	1036
Multiple	2	1	31	65	99	2	1	42	45
Rail Crossing	0	0	3	4	7	0	0	5	5
Sub-total	11	178	1457	2999	4645	13	198	1832	2043
MID BLOCK									
Crossover	0	0	1	3	4	0	0	1	1
Rail Crossing	0	0	4	10	14	0	0	4	4
Divided Road	6	73	569	1458	2106	6	75	671	752
Not Divided	18	162	647	1849	2676	18	180	773	971
One Way	0	0	4	10	14	0	0	4	4
Freeway	0	8	52	137	197	0	11	60	71
Ramp On	0	2	0	8	10	0	2	0	2
Ramp Off	0	0	2	8	10	0	0	4	4
Pedestrian Crossing	0	3	29	35	67	0	3	33	36
Other Midblock	1	2	8	14	25	1	2	9	12
Sub-total	25	250	1316	3532	5123	25	273	1559	1857
TOTAL	36	428	2773	6531	9768	38	471	3391	3900

Table 15b: Crashes and Casualties by Location Type and Severity:
Rural

Location Type	Crashes					Casualties			
	Fatal Crashes	Serious Injury Crashes	Minor Injury Crashes	Property Damage Crashes	ALL CRASHES	Fatalities	Serious Injuries	Minor Injuries	ALL CASUALTIES
INTERSECTION									
Interchange	0	0	0	1	1	0	0	0	0
Cross Road	0	18	71	125	214	0	23	117	140
Y-Junction	0	0	0	1	1	0	0	0	0
T-Junction	5	22	69	172	268	5	30	100	135
Multiple	0	0	1	4	5	0	0	1	1
Rail Crossing	0	0	0	0	0	0	0	0	0
Sub-total	5	40	141	303	489	5	53	218	276
MID BLOCK									
Rail Crossing	1	0	1	1	3	1	0	1	2
Divided Road	1	5	10	46	62	1	8	14	23
Not Divided	41	143	329	675	1188	47	175	436	658
One Way	0	1	0	0	1	0	1	1	2
Freeway	0	2	1	4	7	0	2	1	3
Ramp On	0	0	0	1	1	0	0	0	0
Pedestrian Crossing	0	0	2	1	3	0	0	3	3
Other Midblock	1	5	2	4	12	1	5	4	10
Sub-total	44	156	345	732	1277	50	191	460	701
TOTAL	49	196	486	1035	1766	55	244	678	977

Table 15c: Crashes and Casualties by Location Type and Severity:
South Australia

Location Type	Crashes					Casualties			
	Fatal Crashes	Serious Injury Crashes	Minor Injury Crashes	Property Damage Crashes	ALL CRASHES	Fatalities	Serious Injuries	Minor Injuries	ALL CASUALTIES
INTERSECTION									
Interchange	0	0	3	6	9	0	0	3	3
Cross Road	4	95	753	1486	2338	6	112	975	1093
Y- Junction	0	0	1	8	9	0	0	1	1
T-Junction	10	122	806	1729	2667	10	138	1023	1171
Multiple	2	1	32	69	104	2	1	43	46
Rail Crossing	0	0	3	4	7	0	0	5	5
Sub-total	16	218	1598	3302	5134	18	251	2050	2319
MID BLOCK									
Crossover	0	0	1	3	4	0	0	1	1
Rail Crossing	1	0	5	11	17	1	0	5	6
Divided Road	7	78	579	1504	2168	7	83	685	775
Not Divided	59	305	976	2524	3864	65	355	1209	1629
One Way	0	1	4	10	15	0	1	5	6
Freeway	0	10	53	141	204	0	13	61	74
Ramp On	0	2	0	9	11	0	2	0	2
Ramp Off	0	0	2	8	10	0	0	4	4
Pedestrian Crossing	0	3	31	36	70	0	3	36	39
Other	2	7	10	18	37	2	7	13	22
Sub-total	69	406	1661	4264	6400	75	464	2019	2558
TOTAL	85	624	3259	7566	11534	93	715	4069	4877

Table 16a: Crashes and Casualties by Traffic Control and Severity:
Metropolitan Adelaide

Traffic Control	Crashes					Casualties			
	Fatal Crashes	Serious Injury Crashes	Minor Injury Crashes	Property Damage Crashes	ALL CRASHES	Fatalities	Serious Injuries	Minor Injuries	ALL CASUALTIES
INTERSECTION									
Traffic Signals	5	64	587	1215	1871	7	73	745	825
Give Way Sign	2	30	194	365	591	2	34	271	307
Stop Sign	0	12	119	232	363	0	13	149	162
Roundabout	0	10	117	266	393	0	10	128	138
No Control	4	62	440	921	1427	4	68	539	611
Sub-total	11	178	1457	2999	4645	13	198	1832	2043
MID BLOCK									
Traffic Signals	0	1	21	26	48	0	1	25	26
Stop Sign	0	0	0	0	0	0	0	0	0
Roundabout	0	0	0	1	1	0	0	0	0
No Control	25	247	1286	3493	5051	25	270	1525	1820
Rail Xing-Boom	0	0	2	3	5	0	0	2	2
Rail Xing-Flashing	0	0	0	0	0	0	0	0	0
Rail Xing-Traffic Signals	0	0	2	7	9	0	0	2	2
Other	0	2	5	2	9	0	2	5	7
Sub-total	25	250	1316	3532	5123	25	273	1559	1857
TOTAL	36	428	2773	6531	9768	38	471	3391	3900

Table 16b: Crashes and Casualties by Traffic Control and Severity:
Rural

Traffic Control	Crashes					Casualties			
	Fatal Crashes	Serious Injury Crashes	Minor Injury Crashes	Property Damage Crashes	ALL CRASHES	Fatalities	Serious Injuries	Minor Injuries	ALL CASUALTIES
INTERSECTION									
Traffic Signals	0	1	8	25	34	0	1	14	15
Give Way Sign	1	22	66	123	212	1	30	110	141
Stop Sign	1	3	14	19	37	1	4	17	22
Roundabout	0	1	7	20	28	0	1	7	8
No Control	3	13	46	116	178	3	17	70	90
Rail Xing-Boom	0	0	0	0	0	0	0	0	0
Sub-total	5	40	141	303	489	5	53	218	276
MID BLOCK									
Traffic Signals	0	0	1	1	2	0	0	1	1
Stop Sign	1	0	0	0	1	1	0	0	1
No Control	43	156	343	730	1272	49	191	458	698
Rail Xing-Boom	0	0	0	0	0	0	0	0	0
Rail Xing-Flashing	0	0	1	1	2	0	0	1	1
Other	0	0	0	0	0	0	0	0	0
Sub-total	44	156	345	732	1277	50	191	460	701
TOTAL	49	196	486	1035	1766	55	244	678	977

Table 16c: Crashes and Casualties by Traffic Control and Severity:
South Australia

Traffic Control	Crashes					Casualties			
	Fatal Crashes	Serious Injury Crashes	Minor Injury Crashes	Property Damage Crashes	ALL CRASHES	Fatalities	Serious Injuries	Minor Injuries	ALL CASUALTIES
Traffic Signals	5	65	595	1240	1905	7	74	759	840
Give Way Sign	3	52	260	488	803	3	64	381	448
Stop Sign	1	15	133	251	400	1	17	166	184
Roundabout	0	11	124	286	421	0	11	135	146
No Control	7	75	486	1037	1605	7	85	609	701
Rail Xing-Boom	0	0	0	0	0	0	0	0	0
Sub-total	16	218	1598	3302	5134	18	251	2050	2319
MID BLOCK									
Traffic Signals	0	1	22	27	50	0	1	26	27
Stop Sign	1	0	0	0	1	1	0	0	1
Roundabout	0	0	0	1	1	0	0	0	0
No Control	68	403	1629	4223	6323	74	461	1983	2518
Rail Xing-Boom	0	0	2	3	5	0	0	2	2
Rail Xing-Flashing	0	0	1	1	2	0	0	1	1
Rail Xing-Traffic Signals	0	0	2	7	9	0	0	2	2
Other	0	2	5	2	9	0	2	5	7
Sub-total	69	406	1661	4264	6400	75	464	2019	2558
TOTAL	85	624	3259	7566	11534	93	715	4069	4877

Table 17: Crashes and Casualties by Area Speed Limit, Region & Severity

Area Speed Limit	Crashes					Casualties			
	Fatal Crashes	Serious Injury Crashes	Minor Injury Crashes	Property Damage Crashes	ALL CRASHES	Fatalities	Serious Injuries	Minor Injuries	ALL CASUALTIES
METROPOLITAN									
<50km/h	1	8	54	164	227	1	9	59	69
50km/h	5	114	676	1779	2574	5	121	775	901
60km/h	13	199	1557	3527	5296	14	215	1906	2135
70km/h	0	16	87	228	331	0	18	103	121
80km/h	9	58	272	536	875	10	67	366	443
90km/h	3	9	46	117	175	3	12	63	78
100km/h	5	16	52	94	167	5	18	85	108
110km/h	0	8	29	86	123	0	11	34	45
Sub-total	36	428	2773	6531	9768	38	471	3391	3900
RURAL									
<50km/h	0	5	4	14	23	0	5	5	10
50km/h	4	32	112	264	412	4	34	144	182
60km/h	1	20	59	128	208	1	23	80	104
70km/h	0	0	1	1	2	0	0	1	1
80km/h	6	19	40	96	161	7	23	59	89
90km/h	0	1	7	11	19	0	1	14	15
100km/h	19	88	173	318	598	22	103	247	372
110km/h	19	31	90	203	343	21	55	128	204
Sub-total	49	196	486	1035	1766	55	244	678	977
TOTAL	85	624	3259	7566	11534	93	715	4069	4877

Table 18: Crashes and Casualties by Light Conditions, Region & Severity

Light Conditions[1] & Region	Crashes					Casualties			
	Fatal Crashes	Serious Injury Crashes	Minor Injury Crashes	Property Damage Crashes	ALL CRASHES	Fatalities	Serious Injuries	Minor Injuries	ALL CASUALTIES
METROPOLITAN									
Daylight	26	317	2289	5068	7700	27	341	2787	3155
Night	10	111	484	1463	2068	11	130	604	745
Sub-total	36	428	2773	6531	9768	38	471	3391	3900
RURAL									
Daylight	29	141	362	744	1276	34	176	519	729
Night	20	55	124	291	490	21	68	159	248
Sub-total	49	196	486	1035	1766	55	244	678	977
TOTAL	85	624	3259	7566	11534	93	715	4069	4877

Table 19: Crashes and Casualties by Vertical Alignment, Region & Severity

Vertical Alignment & Region	Crashes				Casualties				
	Fatal Crashes	Serious Injury Crashes	Minor Injury Crashes	Property Damage Crashes	ALL CRASHES	Fatalities	Serious Injuries	Minor Injuries	ALL CASUALTIES
METROPOLITAN									
Level	28	318	2380	5635	8361	29	343	2878	3250
Crest of Hill	1	12	34	91	138	1	13	49	63
Bottom of Hill	2	5	29	49	85	2	7	36	45
Slope	5	92	327	749	1173	6	107	423	536
Unknown	0	1	3	7	11	0	1	5	6
Sub-total	36	428	2773	6531	9768	38	471	3391	3900
RURAL									
Level	39	148	373	816	1376	41	185	528	754
Crest of Hill	1	5	22	33	61	3	12	28	43
Bottom of Hill	0	3	12	28	43	0	3	14	17
Slope	9	35	78	151	273	11	39	107	157
Unknown	0	5	1	7	13	0	5	1	6
Sub-total	49	196	486	1035	1766	55	244	678	977
TOTAL	85	624	3259	7566	11534	93	715	4069	4877

Table 20: Crashes and Casualties by Horizontal Alignment, Region & Severity

Horizontal Alignment & Region	Crashes				Casualties				
	Fatal Crashes	Serious Injury Crashes	Minor Injury Crashes	Property Damage Crashes	ALL CRASHES	Fatalities	Serious Injuries	Minor Injuries	ALL CASUALTIES
METROPOLITAN									
Straight	27	334	2447	5812	8620	29	364	2981	3374
Curved, View Obscured	3	30	88	188	309	3	34	109	146
Curved, View Open	6	63	238	529	836	6	72	300	378
Unknown	0	1	0	2	3	0	1	1	2
Sub-total	36	428	2773	6531	9768	38	471	3391	3900
RURAL									
Straight	26	123	337	785	1271	28	156	470	654
Curved, View Obscured	3	25	46	87	161	4	29	67	100
Curved, View Open	20	48	103	162	333	23	59	141	223
Unknown	0	0	0	1	1	0	0	0	0
Sub-total	49	196	486	1035	1766	55	244	678	977
TOTAL	85	624	3259	7566	11534	93	715	4069	4877

Table 21: Crashes and Casualties by Road Moisture, Region & Severity

Road Moisture & Region	Crashes					Casualties			
	Fatal Crashes	Serious Injury Crashes	Minor Injury Crashes	Property Damage Crashes	ALL CRASHES	Fatalities	Serious Injuries	Minor Injuries	ALL CASUALTIES
METROPOLITAN									
Dry	34	388	2422	5659	8503	36	426	2979	3441
Wet	2	39	348	863	1252	2	44	408	454
Unknown	0	1	3	9	13	0	1	4	5
Sub-total	36	428	2773	6531	9768	38	471	3391	3900
RURAL									
Dry	46	166	422	859	1493	51	207	592	850
Wet	2	27	63	170	262	3	33	85	121
Unknown	1	3	1	6	11	1	4	1	6
Sub-total	49	196	486	1035	1766	55	244	678	977
TOTAL	85	624	3259	7566	11534	93	715	4069	4877

Table 22: Crashes and Casualties by Route and Severity

Route	Crashes					Casualties			
	Fatal Crashes	Serious Injury Crashes	Minor Injury Crashes	Property Damage Crashes	ALL CRASHES	Fatalities	Serious Injuries	Minor Injuries	ALL CASUALTIES
Anzac Highway	1	8	43	72	124	1	11	48	60
Barrier Highway	0	1	5	9	15	0	1	6	7
Cudlee Creek - Lobethal Road	0	0	4	1	5	0	0	6	6
Dukes Highway	1	1	3	12	17	1	1	4	6
Eyre Highway	2	3	9	20	34	2	3	14	19
Gorge Road	1	2	19	32	54	1	2	22	25
Lincoln Highway	0	2	3	18	23	0	4	5	9
Lyndoch - Chain of Ponds Road	1	0	3	5	9	1	0	4	5
Lower North East Road	0	0	3	8	11	0	0	5	5
Horrocks Highway	1	4	11	13	29	1	5	14	20
Main North Road (M) ¹	2	14	132	329	477	3	15	163	181
North East Road	0	7	67	163	237	0	7	77	84
Main South Road	0	6	10	29	45	0	7	18	25
Port Wakefield Road	4	7	18	52	81	4	16	26	46
Princes Highway	1	2	12	40	55	3	7	20	30
Riddoch Highway	0	3	5	14	22	0	3	5	8
South Eastern Freeway ²	0	6	22	58	86	0	9	23	32
Southern Expressway	0	3	15	30	48	0	3	20	23
Stuart Highway	1	4	7	14	26	1	7	12	20
Sturt Highway	3	3	12	26	44	3	8	18	29
Tea Tree Gully - Mannum Road	1	8	11	23	43	1	8	16	25
Victor Harbor Road	2	4	15	31	52	3	9	38	50

M = Metropolitan Adelaide

¹ From Fitzroy Terrace to Gawler Bypass.

² Does not include the intersection with Cross Road.

Table 23a: Crashes and Casualties by Local Government Area & Severity, Metropolitan Adelaide: Council Roads

Local Government Area	Crashes					Casualties			
	Fatal Crashes	Serious Injury Crashes	Minor Injury Crashes	Property Damage Crashes	ALL CRASHES	Fatalities	Serious Injuries	Minor Injuries	ALL CASUALTIES
City of Adelaide	0	14	110	237	361	0	14	127	141
Adelaide Hills Council	1	11	27	67	106	1	14	37	52
Adelaide Plains Council	1	0	2	11	14	1	0	3	4
The Barossa Council	0	0	0	1	1	0	0	0	0
City of Burnside	0	3	14	37	54	0	3	15	18
Campbelltown City Council	0	1	15	52	68	0	1	17	18
City of Charles Sturt	1	2	39	153	195	1	3	42	46
Town of Gawler	1	5	10	28	44	1	7	14	22
City of Holdfast Bay	1	4	34	72	111	1	4	34	39
Light Regional Council	0	1	3	4	8	0	1	3	4
City of Marion	1	6	42	121	170	1	6	47	54
City of Mitcham	0	8	32	58	98	0	8	36	44
Mount Barker District Council	2	4	23	49	78	2	4	27	33
City of Norwood Payneham & St Peters	0	4	23	42	69	0	4	24	28
City of Onkaparinga	2	34	115	232	383	2	39	162	203
City of Playford	0	23	106	228	357	0	23	132	155
City of Prospect	0	1	8	21	30	0	1	8	9
City of Port Adelaide Enfield	1	8	53	217	279	1	8	55	64
City of Salisbury	2	11	63	224	300	2	11	77	90
City of Tea Tree Gully	0	6	19	93	118	0	7	21	28
City of Unley	0	4	21	46	71	0	4	27	31
Town of Walkerville	0	0	5	9	14	0	0	5	5
City of West Torrens	0	5	30	86	121	0	5	32	37
Total	13	155	794	2088	3050	13	167	945	1125

Table 23b: Crashes and Casualties by Local Government Area & Severity, Metropolitan Adelaide: Departmental Roads

Local Government Area	Crashes				Casualties				
	Fatal Crashes	Serious Injury Crashes	Minor Injury Crashes	Property Damage Crashes	ALL CRASHES	Fatalities	Serious Injuries	Minor Injuries	ALL CASUALTIES
City of Adelaide	0	3	31	83	117	0	3	35	38
Adelaide Hills Council	5	24	74	159	262	5	25	99	129
Adelaide Plains Council	0	3	2	8	13	0	3	3	6
The Barossa Council	0	0	1	0	1	0	0	1	1
City of Burnside	0	5	64	117	186	0	5	69	74
Campbelltown City Council	1	4	68	106	179	1	4	87	92
City of Charles Sturt	1	24	184	435	644	1	24	223	248
Town of Gawler	0	3	24	53	80	0	3	36	39
City of Holdfast Bay	1	8	50	98	157	1	9	62	72
Light Regional Council	0	0	9	15	24	0	0	9	9
City of Marion	2	22	126	282	432	2	22	160	184
City of Mitcham	1	11	110	263	385	2	13	126	141
Mount Barker District Council	2	8	43	70	123	2	11	50	63
City of Norwood Payneham & St Peters	1	12	113	265	391	1	12	132	145
City of Onkaparinga	0	34	140	254	428	0	40	192	232
City of Playford	3	17	127	241	388	4	20	166	190
City of Prospect	0	4	63	127	194	0	4	71	75
City of Port Adelaide Enfield	0	31	238	704	973	0	32	297	329
City of Salisbury	4	24	181	479	688	4	29	220	253
City of Tea Tree Gully	1	6	84	160	251	1	7	107	115
City of Unley	0	7	77	130	214	0	10	86	96
Town of Walkerville	0	7	22	78	107	0	8	31	39
City of West Torrens	1	16	148	315	480	1	20	184	205
Metro Unincorporated	0	0	0	1	1	0	0	0	0
Total	23	273	1979	4443	6718	25	304	2446	2775

Table 23c: Crashes and Casualties by Local Government Area & Severity, Metropolitan Adelaide: All Roads

Local Government Area	Crashes					Casualties			
	Fatal Crashes	Serious Injury Crashes	Minor Injury Crashes	Property Damage Crashes	ALL CRASHES	Fatalities	Serious Injuries	Minor Injuries	ALL CASUALTIES
City of Adelaide	0	17	141	320	478	0	17	162	179
Adelaide Hills Council	6	35	101	226	368	6	39	136	181
Adelaide Plains Council	1	3	4	19	27	1	3	6	10
The Barossa Council	0	0	1	1	2	0	0	1	1
City of Burnside	0	8	78	154	240	0	8	84	92
Campbelltown City Council	1	5	83	158	247	1	5	104	110
City of Charles Sturt	2	26	223	588	839	2	27	265	294
Town of Gawler	1	8	34	81	124	1	10	50	61
City of Holdfast Bay	2	12	84	170	268	2	13	96	111
Light Regional Council	0	1	12	19	32	0	1	12	13
City of Marion	3	28	168	403	602	3	28	207	238
City of Mitcham	1	19	142	321	483	2	21	162	185
Mount Barker District Council	4	12	66	119	201	4	15	77	96
City of Norwood Payneham & St Peters	1	16	136	307	460	1	16	156	173
City of Onkaparinga	2	68	255	486	811	2	79	354	435
City of Playford	3	40	233	469	745	4	43	298	345
City of Prospect	0	5	71	148	224	0	5	79	84
City of Port Adelaide Enfield	1	39	291	921	1252	1	40	352	393
City of Salisbury	6	35	244	703	988	6	40	297	343
City of Tea Tree Gully	1	12	103	253	369	1	14	128	143
City of Unley	0	11	98	176	285	0	14	113	127
Town of Walkerville	0	7	27	87	121	0	8	36	44
City of West Torrens	1	21	178	401	601	1	25	216	242
Metro Unincorporated	0	0	0	1	1	0	0	0	0
Total	36	428	2773	6531	9768	38	471	3391	3900

Table 24a: Crashes and Casualties by Local Government Area & Severity, Rural: Council Roads

Local Government Area	Crashes					Casualties			
	Fatal Crashes	Serious Injury Crashes	Minor Injury Crashes	Property Damage Crashes	ALL CRASHES	Fatalities	Serious Injuries	Minor Injuries	ALL CASUALTIES
Adelaide Hills Council, The	0	0	0	0	0	0	0	0	0
Adelaide Plains Council	0	2	12	12	26	0	3	15	18
Alexandrina Council	1	7	22	28	58	1	7	26	34
Anangu Pitjantjatjara Yankunytjatjara	1	0	5	1	7	1	0	6	7
The Barossa Council	1	3	7	26	37	1	3	8	12
Barunga West Council	0	0	1	2	3	0	0	2	2
Berri Barmera Council	0	1	4	14	19	0	1	4	5
District Council of Ceduna	1	0	1	2	4	1	0	1	2
Clare and Gilbert Valleys Council	0	2	6	9	17	0	2	10	12
District Council of Cleve	0	0	0	1	1	0	0	0	0
District Council of Coober Pedy	1	0	0	4	5	1	0	0	1
Coorong District Council	1	3	5	5	14	1	3	5	9
Copper Coast Council	1	2	5	9	17	1	2	15	18
District Council of Elliston	0	0	0	1	1	0	0	0	0
The Flinders Ranges Council	0	0	0	0	0	0	0	0	0
District Council of Franklin Harbour	0	1	0	0	1	0	1	0	1
Regional Council of Goyder	0	1	2	3	6	0	2	4	6
District Council of Grant	0	2	5	17	24	0	2	6	8
Kangaroo Island Council	1	3	2	16	22	1	3	2	6
District Council of Karoonda East Murray	0	0	0	2	2	0	0	0	0
District Council of Kimba	0	0	0	0	0	0	0	0	0
Kingston District Council	0	1	0	2	3	0	1	0	1
Light Regional Council	1	3	8	11	23	1	3	12	16
District Council of Lower Eyre Peninsula	0	1	2	4	7	0	1	2	3
District Council of Loxton Waikerie	0	3	4	9	16	0	3	5	8
Mid Murray Council	0	5	9	11	25	0	5	12	17
Sub-total	9	40	100	189	338	9	42	135	186

Table 24a: Crashes and Casualties by Local Government Area & Severity, Rural: Council Roads (cont.)

Local Government Area	Crashes					Casualties			
	Fatal Crashes	Serious Injury Crashes	Minor Injury Crashes	Property Damage Crashes	ALL CRASHES	Fatalities	Serious Injuries	Minor Injuries	ALL CASUALTIES
City of Mount Gambier	0	2	17	37	56	0	2	20	22
District Council of Mount Remarkable	0	1	1	2	4	0	1	1	2
Rural City of Murray Bridge	1	3	21	24	49	2	3	22	27
Naracoorte Lucindale Council	0	1	4	3	8	0	1	9	10
Northern Areas Council	0	2	1	2	5	0	3	1	4
District Council of Orreroo Carrieton	0	0	0	0	0	0	0	0	0
Pastoral Unincorporated	0	0	0	3	3	0	0	0	0
District Council of Peterborough	0	0	0	1	1	0	0	0	0
Port Augusta City Council	2	3	4	16	25	3	4	4	11
City of Port Lincoln	0	2	3	12	17	0	2	3	5
Port Pirie Regional Council	0	3	9	27	39	0	3	13	16
Renmark Paringa Council	2	1	4	12	19	2	1	7	10
District Council of Robe	0	1	1	1	3	0	1	2	3
Municipal Council of Roxby Downs	0	0	0	0	0	0	0	0	0
Southern Mallee District Council	0	1	2	2	5	0	1	4	5
District Council of Streaky Bay	1	2	0	3	6	1	4	0	5
Tatiara District Council	1	1	3	10	15	1	1	3	5
District Council of Tumby Bay	0	0	1	5	6	0	0	1	1
City of Victor Harbor	1	1	7	18	27	1	1	13	15
Wakefield Regional Council	0	0	7	9	16	0	0	10	10
Wattle Range Council	0	4	5	15	24	0	4	5	9
City of Whyalla	2	7	14	21	44	2	10	19	31
Wudinna District Council	1	0	1	0	2	1	0	1	2
District Council of Yankalilla	0	7	7	9	23	0	7	12	19
Yorke Peninsula Council	1	8	6	19	34	1	10	13	24
Sub-total	12	50	118	251	431	14	59	163	236
TOTAL	21	90	218	440	769	23	101	298	422

Table 24b: Crashes and Casualties by Local Government Area & Severity, Rural: Departmental Roads

Local Government Area	Crashes					Casualties			
	Fatal Crashes	Serious Injury Crashes	Minor Injury Crashes	Property Damage Crashes	ALL CRASHES	Fatalities	Serious Injuries	Minor Injuries	ALL CASUALTIES
Adelaide Hills Council, The	0	2	0	0	2	0	2	1	3
Adelaide Plains Council	2	0	3	13	18	2	6	6	14
Alexandrina Council	3	10	24	60	97	5	14	43	62
Anangu Pitjantjatjara Yankunytjatjara	0	0	0	0	0	0	0	0	0
The Barossa Council	1	3	13	28	45	1	3	16	20
Barunga West Council	0	2	6	5	13	0	2	8	10
Berri Barmera Council	0	1	8	13	22	0	1	11	12
District Council of Ceduna	0	0	3	6	9	0	0	5	5
Clare and Gilbert Valleys Council	1	4	17	17	39	1	5	21	27
District Council of Cleve	1	1	1	3	6	1	2	2	5
District Council of Coober Pedy	0	0	1	0	1	0	0	1	1
Coorong District Council	1	0	6	15	22	1	0	12	13
Copper Coast Council	0	1	9	3	13	0	1	10	11
District Council of Elliston	1	0	0	3	4	1	0	0	1
The Flinders Ranges Council	0	0	0	2	2	0	0	0	0
District Council of Franklin Harbour	0	0	0	4	4	0	0	0	0
Regional Council of Goyder	2	1	4	10	17	2	2	5	9
District Council of Grant	1	4	7	15	27	3	9	9	21
Kangaroo Island Council	0	0	5	3	8	0	0	5	5
District Council of Karoonda East Murray	0	0	1	3	4	0	0	2	2
District Council of Kimba	1	1	1	2	5	1	1	1	3
Kingston District Council	0	1	4	6	11	0	1	7	8
Light Regional Council	1	3	17	26	47	1	5	21	27
District Council of Lower Eyre Peninsula	1	2	8	2	13	1	2	8	11
District Council of Loxton Waikerie	2	4	5	16	27	2	5	10	17
Mid Murray Council	1	6	8	21	36	1	7	11	19
Sub-total	19	46	151	276	492	23	68	215	306

Table 24b: Crashes and Casualties by Local Government Area & Severity, Rural: Departmental Roads (cont.)

Local Government Area	Crashes					Casualties			
	Fatal Crashes	Serious Injury Crashes	Minor Injury Crashes	Property Damage Crashes	ALL CRASHES	Fatalities	Serious Injuries	Minor Injuries	ALL CASUALTIES
City of Mount Gambier	0	3	7	31	41	0	3	13	16
District Council of Mount Remarkable	1	0	1	4	6	1	0	1	2
Rural City of Murray Bridge	1	8	12	31	52	1	8	13	22
Naracoorte Lucindale Council	0	2	4	11	17	0	2	4	6
Northern Areas Council	0	3	2	5	10	0	4	3	7
District Council of Orreroo Carrieton	0	1	1	1	3	0	1	2	3
Pastoral Unincorporated	3	10	12	43	68	3	15	21	39
District Council of Peterborough	0	0	1	2	3	0	0	2	2
Port Augusta City Council	0	0	6	16	22	0	0	7	7
City of Port Lincoln	0	2	1	15	18	0	3	2	5
Port Pirie Regional Council	2	3	3	10	18	2	4	4	10
Renmark Paringa Council	1	1	6	10	18	1	3	10	14
District Council of Robe	0	0	1	4	5	0	0	1	1
Municipal Council of Roxby Downs	0	1	6	6	13	0	1	9	10
Southern Mallee District Council	0	1	3	2	6	0	1	3	4
District Council of Streaky Bay	0	2	3	9	14	0	2	3	5
Tatiara District Council	0	0	1	1	2	0	0	1	1
District Council of Tumby Bay	0	0	2	0	2	0	0	2	2
City of Victor Harbor	0	4	8	20	32	0	5	10	15
Wakefield Regional Council	0	6	9	25	40	0	9	14	23
Wattle Range Council	0	2	9	19	30	0	2	9	11
City of Whyalla	0	0	2	6	8	0	0	2	2
Wudinna District Council	0	1	2	4	7	0	1	4	5
District Council of Yankalilla	0	4	8	22	34	0	4	10	14
Yorke Peninsula Council	1	6	7	22	36	1	7	15	23
Sub-total	9	60	117	319	505	9	75	165	249
TOTAL	28	106	268	595	997	32	143	380	555

Table 24c: Crashes and Casualties by Local Government Area & Severity, Rural: All Roads

Local Government Area	Crashes				Casualties				
	Fatal Crashes	Serious Injury Crashes	Minor Injury Crashes	Property Damage Crashes	ALL CRASHES	Fatalities	Serious Injuries	Minor Injuries	ALL CASUALTIES
Adelaide Hills Council, The	0	2	0	0	2	0	2	1	3
Adelaide Plains Council	2	2	15	25	44	2	9	21	32
Alexandrina Council	4	17	46	88	155	6	21	69	96
Anangu Pitjantjatjara Yankunytjatjara	1	0	5	1	7	1	0	6	7
The Barossa Council	2	6	20	54	82	2	6	24	32
Barunga West Council	0	2	7	7	16	0	2	10	12
Berri Barmera Council	0	2	12	27	41	0	2	15	17
District Council of Ceduna	1	0	4	8	13	1	0	6	7
Clare and Gilbert Valleys Council	1	6	23	26	56	1	7	31	39
District Council of Cleve	1	1	1	4	7	1	2	2	5
District Council of Coober Pedy	1	0	1	4	6	1	0	1	2
Coorong District Council	2	3	11	20	36	2	3	17	22
Copper Coast Council	1	3	14	12	30	1	3	25	29
District Council of Elliston	1	0	0	4	5	1	0	0	1
The Flinders Ranges Council	0	0	0	2	2	0	0	0	0
District Council of Franklin Harbour	0	1	0	4	5	0	1	0	1
Regional Council of Goyder	2	2	6	13	23	2	4	9	15
District Council of Grant	1	6	12	32	51	3	11	15	29
Kangaroo Island Council	1	3	7	19	30	1	3	7	11
District Council of Karoonda East Murray	0	0	1	5	6	0	0	2	2
District Council of Kimba	1	1	1	2	5	1	1	1	3
Kingston District Council	0	2	4	8	14	0	2	7	9
Light Regional Council	2	6	25	37	70	2	8	33	43
District Council of Lower Eyre Peninsula	1	3	10	6	20	1	3	10	14
District Council of Loxton Waikerie	2	7	9	25	43	2	8	15	25
Mid Murray Council	1	11	17	32	61	1	12	23	36
Sub-total	28	86	251	465	830	32	110	350	492

Table 24c: Crashes and Casualties by Local Government Area & Severity, Rural: All Roads (cont.)

Local Government Area	Crashes				Casualties				
	Fatal Crashes	Serious Injury Crashes	Minor Injury Crashes	Property Damage Crashes	ALL CRASHES	Fatalities	Serious Injuries	Minor Injuries	ALL CASUALTIES
City of Mount Gambier	0	5	24	68	97	0	5	33	38
District Council of Mount Remarkable	1	1	2	6	10	1	1	2	4
Rural City of Murray Bridge	2	11	33	55	101	3	11	35	49
Naracoorte Lucindale Council	0	3	8	14	25	0	3	13	16
Northern Areas Council	0	5	3	7	15	0	7	4	11
District Council of Orroroo Carrieton	0	1	1	1	3	0	1	2	3
Pastoral Unincorporated	3	10	12	46	71	3	15	21	39
District Council of Peterborough	0	0	1	3	4	0	0	2	2
Port Augusta City Council	2	3	10	32	47	3	4	11	18
City of Port Lincoln	0	4	4	27	35	0	5	5	10
Port Pirie Regional Council	2	6	12	37	57	2	7	17	26
Renmark Paringa Council	3	2	10	22	37	3	4	17	24
District Council of Robe	0	1	2	5	8	0	1	3	4
Municipal Council of Roxby Downs	0	2	8	8	18	0	2	13	15
Southern Mallee District Council	1	3	3	5	12	1	5	3	9
District Council of Streaky Bay	1	3	6	19	29	1	3	6	10
Tatiara District Council	0	0	2	6	8	0	0	2	2
District Council of Tumby Bay	1	5	15	38	59	1	6	23	30
City of Victor Harbor	0	6	16	34	56	0	9	24	33
Wakefield Regional Council	0	6	14	34	54	0	6	14	20
Wattle Range Council	2	7	16	27	52	2	10	21	33
City of Whyalla	1	1	3	4	9	1	1	5	7
Wudinna District Council	0	11	15	31	57	0	11	22	33
District Council of Yankalilla	2	14	13	41	70	2	17	28	47
Yorke Peninsula Council	0	0	2	0	2	0	0	2	2
Sub-total	21	110	235	570	936	23	134	328	485
TOTAL	49	196	486	1035	1766	55	244	678	977

Table 25: Top Intersections with highest number of Casualty Crashes 2020

Intersection	Current Year	Previous Years			
	2020	2019	2018	2017	2016
STEBONHEATH - STH OF CURTIS ROAD - WOMMA ROAD	12	5	6	11	7
PEACHEY ROAD - CURTIS ROAD	10	6	5	8	5
HAMPSTEAD ROAD - GRAND JUNCTION ROAD	9	3	7	6	5
GLYNBURN ROAD - MONTACUTE - ATHELSTONE ROAD	7	6	2	6	7
STURT ROAD - MARION ROAD	7	9	11	8	6
MAIN NORTH ROAD - MONTAGUE ROAD	6	9	3	1	6
ST BERNARD'S ROAD - MONTACUTE - ATHELSTONE ROAD	6	0	0	3	2
ADAM STREET - PORT ROAD	5	3	3	0	4
ANZAC HIGHWAY - GRAY STREET	5	2	1	0	2
FULLARTON ROAD - DEQUETTEVILLE TERRACE	5	6	11	7	8
GOODWOOD ROAD - GREENHILL ROAD	5	2	4	1	3
PROSPECT ROAD - FITZROY TERRACE	5	4	6	4	4
SIR DONALD BRADMAN DRIVE - SOUTH RD / MAIN SOUTH ROAD	5	1	1	1	5
SOUTH RD / MAIN SOUTH ROAD - RICHMOND ROAD	5	2	6	4	4
SUDHOLZ ROAD - NORTH EAST ROAD	5	5	1	2	4
WATERLOO CNR INTERCHANGE CONNECT - PT WAKEFIELD ROAD	5	2	4	3	4
WEST LAKES BOULEVARD - SUNRISE COURT	5	1	2	1	1
WILLIAMSTOWN - BIRDWOOD - LUCKY HIT ROAD	5	0	1	1	0

Table 26: Motor Vehicles Involved in & Responsible for Crashes by Region and Severity

Vehicle Type & Region	Fatal Crashes		Serious Injury Crashes		Minor Injury Crashes		Property Damage Crashes		ALL CRASHES	
	Involved	Responsible	Involved	Responsible	Involved	Responsible	Involved	Responsible	Involved	Responsible
PASSENGER VEHICLES										
Metropolitan	39	22	482	261	4707	2358	10781	5380	16009	8021
Rural	51	36	187	129	583	400	1281	782	2102	1347
Sub-total	90	58	669	390	5290	2758	12062	6162	18111	9368
LIGHT TRUCKS (≤ 4.5 tonnes)										
Metropolitan	0	0	4	1	18	10	41	23	63	34
Rural	0	0	1	0	0	0	8	5	9	5
Sub-total	0	0	5	1	18	10	49	28	72	39
HEAVY VEHICLES¹										
Metropolitan	2	1	13	3	110	64	875	583	1000	651
Rural	7	2	11	7	29	15	139	90	186	114
Sub-total	9	3	24	10	139	79	1014	673	1186	765
BUSES										
Metropolitan	1	0	5	1	20	10	221	96	247	107
Rural	1	0	1	0	0	0	12	8	14	8
Sub-total	2	0	6	1	20	10	233	104	261	115
MOTORCYCLES										
Metropolitan	11	9	133	83	221	143	274	149	639	384
Rural	10	7	62	49	49	31	32	20	153	107
Sub-total	21	16	195	132	270	174	306	169	792	491
BICYCLISTS										
Metropolitan	1	1	69	40	327	92	285	87	682	220
Rural	1	0	8	2	19	9	18	11	46	22
Sub-total	2	1	77	42	346	101	303	98	728	242
OTHER										
Metropolitan	1	1	3	2	14	8	135	77	153	88
Rural	1	0	3	2	6	2	21	7	31	11
Sub-total	2	1	6	4	20	10	156	84	184	99
TOTAL										
Metropolitan	55	34	709	391	5417	2685	12612	6395	18793	9505
Rural	71	45	273	189	686	457	1511	923	2541	1614
TOTAL	126	79	982	580	6103	3142	14123	7318	21334	11119

¹ Excludes Buses and other defined special vehicles.

NOTE: Excludes data for crashes where responsibility not attributed to a road user. For example, responsibility not recorded or unriden animal responsible.

Table 27: Crashes and Casualties by Vehicle Movement of Motor Vehicle Responsible and Severity (excl. Pedestrian)

Vehicle Movement of Unit Responsible	Crashes					Casualties			
	Fatal Crashes	Serious Injury Crashes	Minor Injury Crashes	Property Damage Crashes	ALL CRASHES	Fatalities	Serious Injuries	Minor Injuries	ALL CASUALTIES
Right Turn	7	99	580	1284	1970	7	112	776	895
Left Turn	0	16	170	438	624	0	21	192	213
U Turn	1	12	51	166	230	1	12	63	76
Swerving	3	20	124	573	720	3	23	142	168
Reversing	0	3	19	90	112	0	3	19	22
Stopped on Carriageway	0	0	3	0	3	0	0	3	3
Straight Ahead	61	385	1976	4204	6626	68	452	2498	3018
Entering Private Driveway	1	7	41	87	136	1	7	45	53
Leaving Private Driveway	2	14	107	237	360	2	14	120	136
Parked	0	1	14	23	38	0	1	14	15
Parking - Angle	0	1	3	5	9	0	1	4	5
Parking - Parallel	0	2	7	28	37	0	2	7	9
Unparking - Angle	0	0	4	10	14	0	0	4	4
UnParking - Parallel	1	2	15	71	89	1	2	20	23
Overtaking - on Right	3	12	21	75	111	4	15	32	51
Overtaking - on Left	0	6	6	26	38	0	6	6	12
Other	0	0	1	1	2	0	0	1	1
On Pedestrian Crossing	0	0	0	0	0	0	0	0	0
TOTAL	79	580	3142	7318	11119	87	671	3946	4704

NOTE: Excludes data for crashes where responsibility not attributed to a road user. For example, responsibility not recorded or unriden animal responsible.

Table 28: Crashes and Casualties by Pedestrian Responsible, Movement and Severity

Pedestrian Movement	Crashes					Casualties			
	Fatal Crashes	Serious Injury Crashes	Minor Injury Crashes	Property Damage Crashes	ALL CRASHES	Fatalities	Serious Injuries	Minor Injuries	ALL CASUALTIES
Walking on Footpath	0	0	1	0	1	0	0	1	1
On Pedestrian Crossing	0	0	0	1	1	0	0	0	0
Within 30m of Pedestrian Crossing	0	0	0	0	0	0	0	0	0
Alighted from Parked Vehicle	0	0	3	1	4	0	0	3	3
Walking on Road	2	2	2	6	12	2	2	2	6
Walking on Road - Against the Traffic	0	1	0	2	3	0	1	1	2
Pushing or Working on Vehicle	0	3	0	0	3	0	3	0	3
Playing on Roadway	0	0	0	1	1	0	0	0	0
Crossing without Control	2	28	60	45	135	2	28	61	91
Other (e.g. Police on Traffic Control)	0	1	1	0	2	0	1	1	2
Crossing with Traffic Signals	0	0	5	9	14	0	0	5	5
TOTAL	4	35	72	65	176	4	35	74	113

Table 29: Crashes by Motor Vehicle Type Involved¹ and Severity

Type of Vehicle ¹	Fatal Crashes	Serious Injury Crashes	Minor Injury Crashes	Property Damage Crashes	ALL CRASHES
Passenger Vehicle	69	480	3025	7261	10835
Light Truck (≤ 4.5 tonnes)	0	5	18	48	71
Heavy Truck	10	26	149	1103	1288
Bus	2	6	19	230	257
Motorcycles / Scooters	19	192	265	296	772
Bicycles	2	75	335	301	713
Pedestrian	7	57	153	117	334
Other	1	2	3	14	20

Table 30: Crashes and Casualties by Speed Involvement² and Severity

Speed Involvement ² & Region	Crashes					Casualties			
	Fatal Crashes	Serious Injury Crashes	Minor Injury Crashes	Property Damage Crashes	ALL CRASHES	Fatalities	Serious Injuries	Minor Injuries	ALL CASUALTIES
METROPOLITAN									
Yes	18	97	220	583	918	20	112	305	437
No	18	331	2553	5948	8850	18	359	3086	3463
Sub-total	36	428	2773	6531	9768	38	471	3391	3900
RURAL									
Yes	16	76	128	166	386	17	92	189	298
No	33	120	358	869	1380	38	152	489	679
Sub-total	49	196	486	1035	1766	55	244	678	977
TOTAL	85	624	3259	7566	11534	93	715	4069	4877

¹ The vehicle type categories are not mutually exclusive and must not be added together. It is where the crash has involved at least one of the vehicle types. Where one crash has involved two or more of the same vehicle type, then it has been counted once.

² Speed contribution definition is located under *Definitions & Explanations*.

ROAD CASUALTIES IN 2020

- Road Users
- Seatbelts & Helmets
- Age & Sex Distribution
- Alcohol
- Drug
- Licence
- Involvement & Responsibility

Table 31: Casualties by Road User Type, Severity, Age and Sex

Road User Types	Sex	0-15			16-19			20-24			25-29			30-39			40-49			50-59			60-69			70+			Unknown			ALL CASUALTIES		
		F	SI	MI	F	SI	MI	F	SI	MI	F	SI	MI	F	SI	MI	F	SI	MI	F	SI	MI	F	SI	MI	F	SI	MI	F	SI	MI			
VEHICLE OCCUPANT																																		
Driver	M	0	2	0	1	13	100	5	23	145	5	14	130	5	29	194	4	22	174	2	25	178	4	18	119	11	27	140	0	0	2	37	173	1182
	F	0	0	1	1	4	98	2	16	152	0	6	162	2	17	267	1	18	254	2	15	162	0	18	123	2	26	122	0	0	1	10	120	1342
	Sub-total	0	2	1	2	17	198	7	39	297	5	20	293	7	46	461	5	40	428	4	40	340	4	36	242	13	53	262	0	0	4	47	293	2526
Passenger	M	1	9	106	1	6	44	1	10	31	0	7	23	1	1	28	1	0	21	0	3	24	0	1	10	2	3	17	0	0	9	7	40	313
	F	1	5	95	0	5	54	2	3	46	0	6	45	1	6	44	0	6	27	2	6	42	1	7	52	1	10	47	0	2	12	8	56	464
	Sub-total	2	14	201	1	11	99	3	13	77	0	13	68	2	7	72	1	6	48	2	9	66	1	8	62	3	13	64	0	2	27	15	96	784
MOTORCYCLIST																																		
Rider	M	0	3	1	6	19	37	2	15	31	1	21	27	6	39	46	0	28	32	2	31	32	1	16	23	0	7	3	0	0	0	18	179	232
	F	0	1	0	1	0	0	0	3	1	0	2	9	0	2	6	0	1	3	0	1	3	0	0	2	0	0	0	0	0	0	1	10	24
	Sub-total	0	4	1	7	19	37	2	18	32	1	23	36	6	41	52	0	29	35	2	32	35	1	16	25	0	7	3	0	0	0	19	189	256
Pillion Passenger	M	0	0	1	1	0	1	0	0	0	0	1	1	0	1	1	0	0	0	0	0	0	0	0	0	0	0	0	0	0	0	1	2	4
	F	0	0	0	0	0	0	1	0	1	0	1	1	0	0	1	0	1	1	0	1	2	0	0	1	0	0	1	0	0	0	1	3	8
	Sub-total	0	0	1	1	0	1	1	0	1	0	2	2	0	1	2	0	1	2	0	1	2	0	0	1	0	0	1	0	0	0	2	5	12
PEDESTRIAN																																		
M	M	0	2	9	0	2	10	0	3	8	1	3	8	1	4	9	0	4	8	1	7	6	0	4	8	0	7	16	0	0	1	3	36	83
	F	0	2	10	0	2	6	0	1	3	1	1	4	1	1	10	2	2	11	0	2	10	0	5	3	1	5	10	0	0	0	5	21	67
	Sub-total	0	4	19	0	4	16	0	4	11	2	4	12	2	5	19	2	6	19	1	9	16	0	9	11	1	12	26	0	0	4	8	57	153
BICYCLIST																																		
M	M	0	6	32	0	1	11	0	1	19	0	6	16	0	9	41	0	9	49	0	11	40	0	11	32	1	3	13	0	1	4	1	58	257
	F	0	0	8	0	0	3	0	2	10	0	1	9	0	2	20	1	5	10	0	2	10	0	1	6	0	2	2	0	0	0	1	15	78
	Sub-total	0	6	40	0	1	14	0	3	29	0	7	25	0	11	62	1	14	59	0	13	50	0	12	38	1	5	15	0	1	4	2	73	336
OTHER ROAD USER																																		
M	M	0	0	0	0	0	0	0	0	0	0	1	0	0	1	1	0	0	1	0	0	0	0	0	0	0	0	0	0	0	0	0	2	2
	F	0	0	0	0	0	0	0	0	0	0	0	0	0	0	0	0	0	0	0	0	0	0	0	0	0	0	0	0	0	0	0	0	0
	Sub-total	0	0	0	0	0	0	0	0	0	0	1	0	0	1	1	0	0	1	0	0	0	0	0	0	0	0	0	0	0	0	0	0	2
ALL ROAD USERS																																		
M	M	1	22	149	9	41	203	8	52	234	7	53	205	13	84	320	5	63	285	5	77	280	5	50	192	14	47	189	0	1	16	67	490	2073
	F	1	8	114	2	11	161	5	25	213	1	17	230	4	28	348	4	33	306	4	27	229	1	31	187	4	43	182	0	2	13	26	225	1983
	TOTAL	2	30	263	11	52	365	13	77	447	8	70	436	17	112	669	9	96	591	9	104	509	6	81	379	18	90	371	0	3	39	93	715	4069

F - Fatality/Life lost, SI - Serious Injury, MI - Minor Injury

Table 32: Casualties by Unit Type and Severity

Unit Type	Fatalities	Serious Injuries	Minor Injuries	ALL CASUALTIES
Passenger Vehicle	59	377	3257	3693
Light Truck (≤ 4.5 tonnes)	0	0	4	4
Heavy Vehicle ¹	3	11	42	56
Bus	0	1	7	8
Motorcycle	21	194	268	483
Bicycle	2	73	336	411
Pedestrian	8	57	153	218
Other	0	2	2	4
TOTAL	93	715	4069	4877

Table 33: Motor Vehicle Casualties by Position in Vehicle and Severity (excl. Bicycles)

Position in Vehicle	Fatalities	Serious Injuries	Minor Injuries	ALL CASUALTIES
FRONT SEAT PASSENGER				
Driver	47	293	2526	2866
Middle	0	0	4	4
Left	10	64	510	584
REAR SEAT PASSENGER				
Right	1	11	89	101
Middle	0	0	26	26
Left	2	16	116	134
CHILD NURSED				
Front	0	0	1	1
Rear	0	0	0	0
UTILITY/TRUCK				
Rear	0	0	2	2
VAN				
Passenger	0	0	0	0
BUS				
Passenger	0	0	6	6
MOTORCYCLE				
Rider	19	189	256	464
Passenger	2	5	12	19
TOWED VEHICLE				
Occupant	0	0	2	2
UNKNOWN/OTHER				
	2	5	28	35
Sub-total	83	583	3578	4244
TOTAL²	93	715	4069	4877

¹ Excludes Buses.

² Includes not applicable user types.

Table 34: Casualties by Road User Type, Safety Device and Severity

Road User Type & Safety Device Use ¹	Fatalities	Serious Injuries	Minor Injuries	ALL CASUALTIES
DRIVER				
Fitted - Worn	29	233	2353	2615
Fitted - Not Worn	13	16	38	67
Fitted - Unknown if Worn	5	42	134	181
Not Fitted	0	2	1	3
Unknown	0	0	0	0
Sub-total	47	293	2526	2866
PASSENGER				
Fitted - Worn	9	70	669	748
Fitted - Not Worn	3	7	17	27
Fitted - Unknown if Worn	1	16	56	73
Child Restraint - Worn	1	3	33	37
Child Restraint - Not Worn	1	0	2	3
Not Fitted	0	0	6	6
Not Applicable	0	0	1	1
Unknown	0	0	0	1
Sub-total	15	96	784	896
MOTORCYCLE RIDER/PASSENGER				
Helmet Worn	19	178	256	453
Helmet - Not Worn	2	7	5	14
Unknown	0	9	7	16
Sub-total	21	194	268	483
BICYCLIST RIDER/PASSENGER				
Helmet Worn	2	67	317	386
Helmet - Not Worn	0	4	13	17
Unknown	0	2	6	8
Sub-total	2	73	336	411
ALL CASUALTIES				
Device Worn	60	553	3629	4242
Device Not Worn	19	36	82	137
Unknown/Not Applicable	6	69	205	280
Sub-total	85	658	3916	4659
TOTAL²	93	715	4069	4877

¹ Police reporting of safety device usage is often not based on direct observation by police officers and may be reliant upon statements by the casualties themselves or other involved parties.

² Includes not applicable safety device use/users (pedestrians).

Table 35: Driver and Motorcycle Rider Casualties with BAC

Severity	Sex	Blood Alcohol Concentration						Not Tested/ Unknown	TOTAL
		Negative	0.001- 0.049	0.050- 0.079	0.080- 0.149	0.150- 0.199	.200+		
Minor Injury	M	865	11	4	32	33	10	459	1414
	F	805	3	5	15	5	6	527	1366
	Sub-total¹	1671	14	9	48	38	16	986	2782
Serious Injury	M	257	10	5	17	14	4	45	352
	F	102	1	2	3	3	3	16	130
	Sub-total¹	359	11	7	20	17	7	61	482
Fatalities	M	42	2	1	2	3	5	0	55
	F	9	0	1	0	1	0	0	11
	Sub-total¹	51	2	2	2	4	5	0	66
ALL CASUALTIES	M	1164	23	10	51	50	19	504	1821
	F	916	4	8	18	9	9	543	1507
	TOTAL¹	2081	27	18	70	59	28	1047	3330

Table 36: Driver and Motorcycle Rider Casualties with Drugs

Age	Sex	Drugs					Combination of drugs ²	Not Tested/ Unknown	TOTAL
		Negative	THC	MDMA	Meth				
Minor Injury	M	786	74	4	35	17	498	1414	
	F	768	25	4	19	4	546	1366	
	Sub-total¹	1554	101	8	54	21	1044	2782	
Serious Injury	M	223	29	5	24	13	58	352	
	F	100	1	1	6	3	19	130	
	Sub-total¹	323	30	6	30	16	77	482	
Fatalities	M	44	6	0	4	1	0	55	
	F	11	0	0	0	0	0	11	
	Sub-total¹	55	6	0	4	1	0	66	
ALL CASUALTIES	M	1053	109	9	63	31	556	1821	
	F	879	26	5	25	7	565	1507	
	TOTAL¹	1932	137	14	88	38	1121	3330	

¹ Unknown sex included.

² Two or more of THC, MDMA or Meth.

Table 37a: Road User Involved in & Responsible for Crashes by Age & Sex:
Fatal Crashes

Age	Sex	Drivers		Motorcycle Riders		Bicycle Riders		Pedestrians		Other Road Users		ALL ROAD USERS	
		Involved	Responsible	Involved	Responsible	Involved	Responsible	Involved	Responsible	Involved	Responsible	Involved	Responsible
0-15	M	1	1	0	0	0	0	0	0	0	0	1	1
	F	0	0	0	0	0	0	0	0	0	0	0	0
	Sub-total¹	1	1	0	0	0	0	0	0	0	0	1	1
16-19	M	2	2	6	4	0	0	0	0	0	0	8	6
	F	2	2	1	1	0	0	0	0	0	0	3	3
	Sub-total¹	4	4	7	5	0	0	0	0	0	0	11	9
20-24	M	9	7	2	2	0	0	0	0	0	0	11	9
	F	3	3	0	0	0	0	0	0	0	0	3	3
	Sub-total¹	12	10	2	2	0	0	0	0	0	0	14	12
25-29	M	8	4	2	2	0	0	1	1	0	0	11	7
	F	2	1	0	0	0	0	1	1	0	0	3	2
	Sub-total¹	10	5	2	2	0	0	2	2	0	0	14	9
30-39	M	9	6	6	4	0	0	1	1	0	0	16	11
	F	3	1	0	0	0	0	2	0	0	0	5	1
	Sub-total¹	12	7	6	4	0	0	3	1	0	0	21	12
40-49	M	12	9	0	0	0	0	0	0	1	0	13	9
	F	4	1	0	0	0	0	2	1	0	0	6	2
	Sub-total¹	16	10	0	0	0	0	2	1	1	0	19	11
50-59	M	11	3	3	2	0	0	1	0	0	0	15	5
	F	3	0	0	0	0	0	0	0	0	0	3	0
	Sub-total¹	14	3	3	2	0	0	1	0	0	0	18	5
60-69	M	8	5	1	1	0	0	0	0	0	0	9	6
	F	2	1	0	0	0	0	0	0	0	0	2	1
	Sub-total¹	10	6	1	1	0	0	0	0	0	0	11	7
70+	M	16	13	0	0	1	1	0	0	0	0	17	14
	F	4	3	0	0	0	0	2	0	0	0	6	3
	Sub-total¹	20	16	0	0	1	1	2	0	0	0	23	17
Unknown	M	0	0	0	0	0	0	0	0	0	0	0	0
	F	0	0	0	0	0	0	0	0	0	0	0	0
	Sub-total¹	1	0	0	0	0	0	0	0	0	0	1	0
ALL AGES	M	76	50	20	15	1	1	3	2	1	0	101	68
	F	23	12	1	1	0	0	7	2	0	0	31	15
	TOTAL¹	100	62	21	16	1	1	10	4	1	0	133	83

¹ Unknown sex included.

Table 37b: Road User Involved in & Responsible for Crashes by Age & Sex:
Serious Injury Crashes

Age	Sex	Drivers		Motorcycle Riders		Bicycle Riders		Pedestrians		Other Road Users		ALL ROAD USERS	
		Involved	Responsible	Involved	Responsible	Involved	Responsible	Involved	Responsible	Involved	Responsible	Involved	Responsible
0-15	M	1	1	3	2	6	6	2	2	0	0	12	11
	F	0	0	1	1	0	0	2	2	0	0	3	3
	Sub-total¹	1	1	4	3	6	6	4	4	0	0	15	14
16-19	M	26	22	20	16	1	0	3	1	0	0	50	39
	F	13	10	0	0	0	0	2	2	0	0	15	12
	Sub-total¹	39	32	20	16	1	0	5	3	0	0	65	51
20-24	M	49	36	15	11	1	0	3	2	0	0	68	49
	F	33	20	3	1	2	2	1	1	0	0	39	24
	Sub-total¹	82	56	18	12	3	2	4	3	0	0	107	73
25-29	M	41	29	22	12	6	2	3	2	0	0	72	45
	F	25	17	2	1	1	0	1	0	0	0	29	18
	Sub-total¹	66	46	24	13	7	2	4	2	0	0	101	63
30-39	M	79	36	40	27	8	2	4	3	0	0	131	68
	F	36	20	2	2	2	1	1	1	0	0	41	24
	Sub-total¹	115	56	42	29	10	3	5	4	0	0	172	92
40-49	M	61	37	29	18	9	5	4	2	0	0	103	62
	F	49	21	1	1	5	3	2	0	0	0	57	25
	Sub-total¹	110	58	30	19	14	8	6	2	0	0	160	87
50-59	M	54	24	31	23	13	9	7	5	0	0	105	61
	F	36	20	1	0	2	0	2	0	0	0	41	20
	Sub-total¹	90	44	32	23	15	9	9	5	0	0	146	81
60-69	M	45	22	16	11	11	6	4	2	0	0	76	41
	F	36	20	0	0	1	1	5	2	0	0	42	23
	Sub-total¹	81	42	16	11	12	7	9	4	0	0	118	64
70+	M	48	31	7	6	3	1	7	5	0	0	65	43
	F	35	26	0	0	2	1	5	3	0	0	42	30
	Sub-total¹	83	57	7	6	5	2	12	8	0	0	107	73
Unknown	M	0	0	0	0	0	0	0	0	0	0	0	0
	F	0	0	0	0	0	0	0	0	0	0	0	0
	Sub-total¹	17	11	1	0	1	1	0	0	0	0	19	12
ALL AGES	M	404	238	183	126	58	31	37	24	0	0	682	419
	F	263	154	10	6	15	8	21	11	0	0	309	179
	TOTAL¹	684	403	194	132	74	40	58	35	0	0	1010	610

¹ Unknown sex included.

Table 37c: Road User Involved in & Responsible for Crashes by Age & Sex:
Minor Injury Crashes

Age	Sex	Drivers		Motorcycle Riders		Bicycle Riders		Pedestrians		Other Road Users		ALL ROAD USERS	
		Involved	Responsible	Involved	Responsible	Involved	Responsible	Involved	Responsible	Involved	Responsible	Involved	Responsible
0-15	M	1	1	1	1	34	14	10	7	0	1	46	24
	F	1	1	0	0	9	4	11	7	0	0	21	12
	Sub-total¹	2	2	1	1	43	18	21	14	0	1	67	36
16-19	M	203	158	38	27	11	5	12	8	0	2	264	200
	F	161	101	0	0	3	0	6	4	0	0	170	105
	Sub-total¹	364	259	38	27	14	5	18	12	0	2	434	305
20-24	M	355	222	33	25	18	10	8	4	0	1	414	262
	F	267	153	1	0	10	4	3	2	0	0	281	159
	Sub-total¹	622	375	34	25	28	14	11	6	0	1	695	421
25-29	M	341	212	26	14	16	3	8	3	0	0	391	232
	F	283	138	9	6	9	3	4	1	0	0	305	148
	Sub-total¹	625	351	35	20	25	6	12	4	0	0	697	381
30-39	M	533	289	47	29	39	8	9	6	0	0	628	332
	F	475	218	6	5	21	6	9	4	0	0	511	233
	Sub-total¹	1008	507	53	34	61	15	18	10	0	0	1140	566
40-49	M	437	215	32	20	51	10	8	3	0	0	528	248
	F	410	168	3	1	12	2	11	1	0	0	436	172
	Sub-total¹	847	383	35	21	63	12	19	4	0	0	964	420
50-59	M	396	168	36	22	39	9	7	1	0	0	478	200
	F	299	129	3	3	10	1	10	6	0	0	322	139
	Sub-total¹	695	297	39	25	49	10	17	7	0	0	800	339
60-69	M	270	128	26	16	33	9	8	3	0	0	337	156
	F	193	82	2	0	6	3	3	2	0	0	204	87
	Sub-total¹	463	210	28	16	39	12	11	5	0	0	541	243
70+	M	263	177	4	3	13	4	16	5	0	0	296	189
	F	189	109	0	0	2	1	9	3	0	0	200	113
	Sub-total¹	452	286	4	3	15	5	25	8	0	0	496	302
Unknown	M	5	4	0	0	4	2	1	0	0	0	10	6
	F	3	3	0	0	0	0	0	0	0	0	3	3
	Sub-total¹	246	195	3	2	6	2	5	2	1	0	261	201
ALL AGES	M	2804	1574	243	157	258	74	87	40	0	4	3392	1849
	F	2281	1102	24	15	82	24	66	30	0	0	2453	1171
	TOTAL¹	5324	2865	270	174	343	99	157	72	1	4	6095	3214

¹ Unknown sex included.

Table 37d: Road User Involved in & Responsible for Crashes by Age & Sex:
Property Damage Crashes

Age	Sex	Drivers		Motorcycle Riders		Bicycle Riders		Pedestrians		Other Road Users		ALL ROAD USERS	
		Involved	Responsible	Involved	Responsible	Involved	Responsible	Involved	Responsible	Involved	Responsible	Involved	Responsible
0-15	M	2	2	0	0	25	14	2	2	0	1	29	19
	F	0	0	0	0	7	4	5	1	0	0	12	5
	Sub-total¹	2	2	0	0	32	18	7	3	0	1	41	24
16-19	M	611	449	28	19	13	5	5	3	0	0	657	476
	F	356	234	2	1	2	2	5	1	0	0	365	238
	Sub-total¹	967	683	30	20	15	7	10	4	0	0	1022	714
20-24	M	1008	662	28	13	9	0	7	5	0	0	1052	680
	F	624	361	2	2	2	1	2	2	0	0	630	366
	Sub-total¹	1634	1025	30	15	11	1	9	7	0	0	1684	1048
25-29	M	903	511	32	16	22	5	1	0	0	0	958	532
	F	528	280	2	1	5	0	1	1	0	0	536	282
	Sub-total¹	1433	793	34	17	27	5	2	1	0	0	1496	816
30-39	M	1488	786	34	21	42	11	10	5	2	0	1576	823
	F	921	466	3	1	6	2	2	0	0	0	932	469
	Sub-total¹	2411	1253	37	22	48	13	12	5	2	0	2510	1293
40-49	M	1184	546	31	18	37	6	2	1	0	0	1254	571
	F	675	299	2	0	6	1	2	0	0	0	685	300
	Sub-total¹	1860	845	33	18	43	7	4	1	0	0	1940	871
50-59	M	1046	511	40	18	23	3	3	2	1	0	1113	534
	F	577	244	2	1	3	1	1	0	0	0	583	246
	Sub-total¹	1624	755	42	19	26	4	4	2	1	0	1697	780
60-69	M	708	351	12	6	8	0	6	1	1	0	735	358
	F	376	179	1	1	1	0	1	1	1	0	380	181
	Sub-total¹	1086	531	13	7	9	0	7	2	2	0	1117	540
70+	M	476	281	2	1	8	1	10	6	0	0	496	289
	F	313	198	0	0	0	0	7	4	0	0	320	202
	Sub-total¹	789	479	2	1	8	1	17	10	0	0	816	491
Unknown	M	20	12	2	1	14	4	11	6	0	1	47	24
	F	6	4	0	0	3	2	4	1	0	0	13	7
	Sub-total¹	941	662	58	50	80	40	47	30	0	1	1126	783
ALL AGES	M	7446	4111	209	113	201	49	57	31	4	2	7917	4306
	F	4376	2265	14	7	35	13	30	11	1	0	4456	2296
	TOTAL¹	12747	7028	279	169	299	96	119	65	5	2	13449	7360

¹ Unknown sex included.

Table 37e: Road User Involved in & Responsible for Crashes by Age & Sex:
All Crashes

Age	Sex	Drivers		Motorcycle Riders		Bicycle Riders		Pedestrians		Other Road Users		ALL ROAD USERS	
		Involved	Responsible	Involved	Responsible	Involved	Responsible	Involved	Responsible	Involved	Responsible	Involved	Responsible
0-15	M	5	5	4	3	65	34	14	11	0	2	88	55
	F	1	1	1	1	16	8	18	10	0	0	36	20
	Sub-total¹	6	6	5	4	81	42	32	21	0	2	124	75
16-19	M	842	631	92	66	25	10	20	12	0	2	979	721
	F	532	347	3	2	5	2	13	7	0	0	553	358
	Sub-total¹	1374	978	95	68	30	12	33	19	0	2	1532	1079
20-24	M	1421	927	78	51	28	10	18	11	0	1	1545	1000
	F	927	537	6	3	14	7	6	5	0	0	953	552
	Sub-total¹	2350	1466	84	54	42	17	24	16	0	1	2500	1554
25-29	M	1293	756	82	44	44	10	13	6	0	0	1432	816
	F	838	436	13	8	15	3	7	3	0	0	873	450
	Sub-total¹	2134	1195	95	52	59	13	20	9	0	0	2308	1269
30-39	M	2109	1117	127	81	89	21	24	15	2	0	2351	1234
	F	1435	705	11	8	29	9	14	5	0	0	1489	727
	Sub-total¹	3546	1823	138	89	119	31	38	20	2	0	3843	1963
40-49	M	1694	807	92	56	97	21	14	6	1	0	1898	890
	F	1138	489	6	2	23	6	17	2	0	0	1184	499
	Sub-total¹	2833	1296	98	58	120	27	31	8	1	0	3083	1389
50-59	M	1507	706	110	65	75	21	18	8	1	0	1711	800
	F	915	393	6	4	15	2	13	6	0	0	949	405
	Sub-total¹	2423	1099	116	69	90	23	31	14	1	0	2661	1205
60-69	M	1031	506	55	34	52	15	18	6	1	0	1157	561
	F	607	282	3	1	8	4	9	5	1	0	628	292
	Sub-total¹	1640	789	58	35	60	19	27	11	2	0	1787	854
70+	M	803	502	13	10	25	7	33	16	0	0	874	535
	F	541	336	0	0	4	2	23	10	0	0	568	348
	Sub-total¹	1344	838	13	10	29	9	56	26	0	0	1442	883
Unknown	M	25	16	2	1	18	6	12	6	0	1	57	30
	F	9	7	0	0	3	2	4	1	0	0	16	10
	Sub-total¹	1205	868	62	52	87	43	52	32	1	1	1407	996
ALL AGES	M	10730	5973	655	411	518	155	184	97	5	6	12092	6642
	F	6943	3533	49	29	132	45	124	54	1	0	7249	3661
	TOTAL¹	18855	10358	764	491	717	236	344	176	7	6	20687	11267

¹ Unknown sex included.

Table 38: Drivers & Motorcycle Riders Involved in & Responsible for Crashes by Licence Type & Severity

Licence Type	Fatal Crashes		Serious Injury Crashes		Minor Injury Crashes		Property Damage Crashes		ALL CRASHES	
	Involved	Responsible	Involved	Responsible	Involved	Responsible	Involved	Responsible	Involved	Responsible
Learner's Permit	7	5	34	27	92	59	138	99	271	190
Probationary Licence	0	0	12	11	43	28	71	48	126	87
Full Licence	90	53	665	372	4416	2187	9869	4957	15040	7569
Unlicensed	14	12	60	48	125	105	297	230	496	395
Conditional Licence	0	0	0	0	0	0	2	1	2	1
Provisional 1 Licence	4	4	27	21	238	187	616	461	885	673
Provisional 2 Licence	3	2	47	35	385	246	956	632	1391	915
Disqualified Licence	2	2	5	2	12	10	24	20	43	34
Unknown	1	0	28	19	283	217	1053	749	1365	985
TOTAL	121	78	878	535	5594	3039	13026	7197	19619	10849

Table 39a: Drivers & Motorcycle Riders Responsible for Crashes by Licence Type and Age: Fatal Crashes

Age Group	Learner's Permit	Probationary Licence	Full Licence	Unlicensed	Conditional Licence	P1 Licence	P2 Licence	Disqualified	Unknown	TOTAL
0-15	0	0	0	1	0	0	0	0	0	1
16-19	4	0	0	4	0	1	0	0	0	9
20-24	0	0	6	2	0	2	1	1	0	12
25-29	0	0	6	1	0	0	0	0	0	7
30-39	0	0	8	2	0	1	0	0	0	11
40-49	0	0	9	0	0	0	1	0	0	10
50-59	1	0	2	2	0	0	0	0	0	5
60-69	0	0	7	0	0	0	0	0	0	7
70+	0	0	15	0	0	0	0	1	0	16
Unknown	0	0	0	0	0	0	0	0	0	0
TOTAL	5	0	53	12	0	4	2	2	0	78

Table 39b: Drivers & Motorcycle Riders Responsible for Crashes by Licence Type and Age:
Serious Injury Crashes

Age Group	Learner's Permit	Probationary Licence	Full Licence	Unlicensed	Conditional Licence	P1 Licence	P2 Licence	Disqualified	Unknown	TOTAL
0-15	0	0	0	4	0	0	0	0	0	4
16-19	16	0	1	2	0	15	12	0	2	48
20-24	3	1	32	7	0	6	16	1	2	68
25-29	4	0	38	10	0	0	4	0	3	59
30-39	0	4	66	11	0	0	2	1	1	85
40-49	2	2	63	9	0	0	1	0	0	77
50-59	2	2	60	3	0	0	0	0	0	67
60-69	0	2	49	2	0	0	0	0	0	53
70+	0	0	63	0	0	0	0	0	0	63
Unknown	0	0	0	0	0	0	0	0	11	11
TOTAL	27	11	372	48	0	21	35	2	19	535

Table 39c: Drivers & Motorcycle Riders Responsible for Crashes by Licence Type and Age:
Minor Injury Crashes

Age Group	Learner's Permit	Probationary Licence	Full Licence	Unlicensed	Conditional Licence	P1 Licence	P2 Licence	Disqualified	Unknown	TOTAL
0-15	0	0	0	3	0	0	0	0	0	3
16-19	29	0	7	9	0	135	102	1	3	286
20-24	13	3	245	17	0	25	89	1	7	400
25-29	6	5	291	26	0	11	22	3	7	371
30-39	8	3	461	30	0	10	23	2	4	541
40-49	3	11	362	12	0	5	8	1	2	404
50-59	0	4	309	5	0	1	2	1	0	322
60-69	0	1	224	0	0	0	0	1	0	226
70+	0	1	285	3	0	0	0	0	0	289
Unknown	0	0	3	0	0	0	0	0	194	197
TOTAL	59	28	2187	105	0	187	246	10	217	3039

Table 39d: Drivers & Motorcycle Riders Responsible for Crashes by Licence Type and Age:
Property Damage Crashes

Age Group	Learner's Permit	Probationary Licence	Full Licence	Unlicensed	Conditional Licence	P1 Licence	P2 Licence	Disqualified	Unknown	TOTAL
0-15	0	0	0	2	0	0	0	0	0	2
16-19	53	2	13	12	0	325	287	2	9	703
20-24	23	9	644	47	1	78	224	1	13	1040
25-29	7	11	663	49	0	18	48	3	11	810
30-39	12	14	1086	70	0	28	40	7	18	1275
40-49	3	8	783	30	0	9	23	5	2	863
50-59	1	3	751	8	0	2	4	2	3	774
60-69	0	1	526	6	0	0	4	0	1	538
70+	0	0	476	3	0	1	0	0	0	480
Unknown	0	0	15	3	0	0	2	0	692	712
TOTAL	99	48	4957	230	1	461	632	20	749	7197

Table 39e: Drivers & Motorcycle Riders Responsible for Crashes by Licence Type and Age:
All Crashes

Age Group	Learner's Permit	Probationary Licence	Full Licence	Unlicensed	Conditional Licence	P1 Licence	P2 Licence	Disqualified	Unknown	TOTAL
0-15	0	0	0	10	0	0	0	0	0	10
16-19	102	2	21	27	0	476	401	3	14	1046
20-24	39	13	927	73	1	111	330	4	22	1520
25-29	17	16	998	86	0	29	74	6	21	1247
30-39	20	21	1621	113	0	39	65	10	23	1912
40-49	8	21	1217	51	0	14	33	6	4	1354
50-59	4	9	1122	18	0	3	6	3	3	1168
60-69	0	4	806	8	0	0	4	1	1	824
70+	0	1	839	6	0	1	0	1	0	848
Unknown	0	0	18	3	0	0	2	0	897	920
TOTAL	190	87	7569	395	1	673	915	34	985	10849

Reference Information for South Australia

- Population
- Licence
- Vehicle Information

Table 40: Estimated Population¹ by Age and Sex

Age Group	Sex		ALL PERSONS
	Male	Female	
0-15	169323	160652	329975
16-19	41986	39982	81968
20-24	58992	55433	114425
25-29	59266	58479	117745
30-39	116098	118591	234689
40-49	107831	109358	217189
50-59	110924	115459	226383
60-69	100105	107382	207487
70+	109231	131283	240514
TOTAL	873756	896619	1770375

Table 41: Licence and Permit Holders² by Age and Sex

Age Group	Sex			ALL PERSONS
	Male	Female	Unknown	
16-19	31609	30664	80	62353
20-24	48,820	46,136	109	95065
25-29	53587	50031	63	103681
30-39	110367	108363	119	218849
40-49	104305	102166	63	206534
50-59	109600	107034	45	216679
60-69	98,993	97,141	18	196152
70+	96,902	87,523	12	184,437
TOTAL	654183	629058	509	1283750

¹ Population as of June 2020. Source: Australian Bureau of Statistics, *Australian Demographic Statistics*, cat.no. 3101.0.

² At December 2020. Source: TRUMPS database, Registration & Licensing Section, Department for Infrastructure and Transport.

Table 42: Motor Vehicle on Register¹ by Vehicle Type

Type of Vehicle	ALL VEHICLES
Cars & Station Wagons	1,091,633
Utilities	191,690
Panel Vans	37,227
Rigid & Other Trucks	41,950
Articulated Trucks	8,888
Other Commercials ²	15,741
Buses	4,006
Motorcycles	47,134
Other ³	46,885
TOTAL	1,485,154

Table 43: Vehicle Kilometres Travelled⁴ (VKT) by Vehicle Type

Type of Vehicle	TOTAL VKT ('000 000)
Passenger Vehicles	11,924
Light Commercials	3,073
Rigid Trucks	537
Articulated Trucks	653
Non-freight Carrying Trucks	21
Motorcycles	66
Buses	119
TOTAL	16,392

¹ At June 2020. Excludes trailers, caravans, plant and equipment. Source: TRUMPS database, Registration & Licensing Section, Department for Infrastructure and Transport.

² Includes animal transporter vehicle, drilling rig vehicle, earth moving vehicle, garbage truck, industrial vehicle, mobile crane vehicle, tanker vehicle.

³ Includes ambulance, armoured vehicle, fork lift, land implement vehicle, golf buggy, tractors.

⁴ Travel for the year ended June 2020. Source: Australian Bureau of Statistics, *Survey of Motor Vehicle Use*, cat. no. 9208.0.